

Product datasheet for **MG218149**

Bcas3 (NM_001166642) Mouse Tagged ORF Clone

Product data:

Product Type:	Expression Plasmids
Product Name:	Bcas3 (NM_001166642) Mouse Tagged ORF Clone
Tag:	TurboGFP
Symbol:	Bcas3
Synonyms:	1500019F07Rik; 2610028P08Rik; AU021018; BC028339; K20D4; rudhira
Mammalian Cell Selection:	Neomycin
Vector:	pCMV6-AC-GFP (PS100010)
E. coli Selection:	Ampicillin (100 ug/mL)



[View online »](#)

ORF Nucleotide Sequence:

>MG218149 representing NM_001166642
 Red=Cloning site Blue=ORF Green=Tags(s)

TTTTGTAATACGACTCACTATAGGGCGGCCGGGAATTCGTCGACTGGATCCGGTACCGAGGAGATCTGCC
 GCC**CGGATCGCC**

ATGAATGAAACAATGGCTACAGATTCTCCTCGGAGACCCAGTCGTTGACTGGCGGAGTCGTGGTCCGCC
 CTCAGGCCGTCACGGAGCAGTCCTACATGGAGAGCGTCGTGACTTTTCTGCAGGATGTTGTGCCACAGGC
 TTACAGTGGGTCTCCCCTAACAGAAAGAAAAGGAGAAGATAGTCTGGGTACAGATTTGAGAATGCAGATCTG
 AACGACACATCACGGAATCTAGAATTTTCACTGAAGTGCATAGCACTGGAAATGAGCCTCCTCTGCTGGTTA
 TGATCGGTACAGTGACGGAATGCAGGTCTGGGCATCCCTATCAGCGGGGAAGCCAGGAGCTCTTCTC
 TGTACGACATGGTCCAGTCCGAGCAGCTAGAATCTTGCCTGCTCCACAGTTGGGTGCCAAAAGTGTGAT
 AACTTTGCTGAGAAAAGACCTCTTCTGGTGTGTTGAAGAGCATTGGATCTTCAGGCACGACACCACCGT
 ACTGCTGTGTGGATCTGTATTCCTCCGACTGGGAAAATGGTCAAGTCCATTAGTTTAAACACCCAT
 TTATGATCTTCACTGTAACAAGCGGATCCTCGTCGTAGTCTTGCAGGAGAAAATTGCTGCCTTTGATAGC
 TGTAATTTTCAAAAAAATTTTTGTCACAAGTTGTTATCCTTGTCTGGCCAAACATGAATCCCATTG
 CTCTTGGGAGCCGCTGGCTTGTATGCAGAAAATAAGCTGATTTCGCTGTACCAGTCCCCTGGAGGAGC
 CTGTGGAGACAACATTCAGTCTTACACTGCCACTGTCTTAGTGTGCTAAAACACTGAAAAGTGGCCTG
 ACGATGGTTGGGAAAGTGGTGACTCAACTGACAGGCACACTGCCCTCAGGGGTGACAGAAGATGACGTTG
 CCCTACACTGCAACTCAAGACGGAGCCCCTTGGTTCAGGCATCATCACAGTATAGACACTGAGACGGT
 TGGAGAGGGCCAGGTGCTTGAAGTGAAGTCCGACAGTATGGCATTGTGGCCACTTCCCTGCCAT
 GAGAAGCCAGTATGCTGTATGGCTTTAATACTAGTGAATGCTTTTAGTCACAACAGACTCTTGGCC
 ATGACTTTCACTGCTTCCAAATCCTGACTCATCCTTGGTCAATCACAGTGTGCTGTCCATGTGA
 CACACTTACAGGGGAGAGACCGAGCCAAAGTTCAGGACATCTGTTTCAGCCATGATTGTCGTTGGGTG
 GTGGTCAGTACCCTCCGGGTACGTCCCAGTTTTCCCATCAATCCTTATGGTGGCCAGCCTTGTGTCC
 GCACACACATGTACCACGAGTAGTCAATCGCATGAGCCGTTTCCAGAAAAGTGTGGGCTGGAAGAGAT
 TGAACAAGAGCTGACATCTAAGCAAGGCGGCCGCTGTAGTCTGTTCAGGCCTGTCCAGCAGCCCTTCT
 GGCTCCCCGCTGCATGGGAAAGTGAACAGCAAGACTCTTACAATAACTTTACAAACAACAACCTGGCA
 ATCCCCGCTTTCTCCCCTCCCCAGCTTGTAGTGTGAGCCTCTTGCGCAATCAAACAGCCAATGAC
 ACTGGGAACCATCACGAAGCGAACAGGCAAAGTAAATCACCTCCACAAATTTCTCCAAGCAAATCAATG
 GCGGTGAGTTTTGCGTGGCTGCAGTGTGGGACTTCCAGGTCTGGTTTGAACAACAGCTGGTCTGA
 AACGGGAAAAAGATCAGTCCAAACAAGTTGTAGTTGAATCTTTACATCATCAGCTGCTACGGGACCTT
 AGTGGAGCACATGATTGAGCCCCGGCCGATCAGTACTGCTCCCAAGATAAGTGAAGACACACCCTGGAG
 ATAATGACGTACCCCGTCCAGCTGGACACTTGTAGAACGCCTCAGTGAATGAACTGCAGCCGCCAT
 TCAATGCGAATCACCCCTGCTCCTCGTGCAGAAAGCAGTGCAGTATTACCAGCTCTGTGGCCGGCTC
 TCTTCCCCTGGAAGTCTGGCCCCATTACTCGACATGGGTCCTATGACAGCTTAGCCTCTGACCATAGT
 GGACAGGAAGATGAAGAATGGCTTTCCAGGTTGAAATGTGACACACACCGGACCCACAGGCGCCTGT
 GGATGGGCCACAATTCATTTCAAACCATCAAACCTCAGGCCAGACCAGGTCATATCAACTAGTTC
 TTCTGTGTTACAATCGCACGGACCTAGCGACACACCACAGCCGCTTTGGACTTTGATACGGATGATCTA
 GATCTTAACAGCCTCAGGATCCAGCCTGTCCGCTCTGACCCAGTCAGCATGCCAGGGTCATCCCCTGCTG
 TCTCTGATCGGAGGGGAGTTTCCACAGTACCGATGCTGCCTCAGGTACCTTTGACCGGAGCGTGACCC
 GCTGGAGGTGTGGGAGCTGGCCTGAGGGCTTCGGGCTGCGGCATATGTCTCCATGGAGCACTCAGAG
 GAGGGCTCCGGGAACGGCTTGCAGATGCCATGGCCGAGTACCAAGCCGAGACGTTGTGGGATCTGGAA
 CAGAACTCAGCGAGAGGGAAGCATCGAGACTCTGAGTAACAGCTCCGGCTCCACCAGCGGCAGCATCCC
 AAGAACTTCGATGGCTACCGATCTCCGCTCCCTACCAACGAGAGCCAGCCGCTCAGCCTTCCCCACT
 GGCTTCCCC

ACGCGTACGCGGCCGCTCGAG - GFP Tag - GTTTAA

Protein Sequence: >MG218149 representing NM_001166642
 Red=Cloning site Green=Tags(s)

MNETMATDSPRRPSRCTGGVVVRPQAVTEQSYMESVVTFLQDVVPQAYSGSPLTEEKEKIVVRFENADL
 NDTSRNLEFHELHSTGNEPPLLVMIGYSDGMQVWGIPISGEAQELFSVRHGPVRAARILPAPQLGAQKCD
 NFAEKRPLLGVCKSIGSSGTTTPPYCCVDLYSLRTGEMVKS IQFKTPIYDLHCNKRILVVVLQEKIAAFDS
 CTFTKKFFVTSCYPCPGPNMNPIALGSRWLAYAENKLRCHQSRGGACDNIQSYTATVLSAAKTLKSGL
 TMVGKVVVTQLTGLTPSGVTEDDVALHCNSRRSPLVPGIITVIDTETVGEQQLVSESDSDGIVAHFPAH
 EKPVCCMAFNSTGMLLVTTDTLGHDFHVQILTHPWSSSQCAVHHLTYLHRGETEAKVQDICFSDHCRWV
 VVSTLRGTSHVFPINPYGGQPCVRTHMSPRVVRNRSRFQKSAGLEEIEQELTSKQGGRCSPVPLSSSPS
 GSPLHGKLT SQDSYNNFTNNNPGNPRLSPLPSLMVVTPLAQIKQPMTLGTITKRTGKVKSPQISPSKSM
 GGEFCVAAVFGTSRSWFANNAGLKREKQSKQVVVESLYIISCYGTLVEHMI EPRPISTAPKISDDTPLE
 IMTSPRASWTLV RTPQWNLQPPFNANHPLLLAAEAVQYYQLLLAGSLPPGSPGITRHSYDLSLADHS
 GQEDEEWLSQVEIVTHTGPHRRLLWMGPQFHFKTIQTSQT TVISTSSSVLQSHGPSDTPQPLLDFTDDL
 DLNSLRIQPVRSDPVSM PGSSRAVSDRRGVSTV TDAASGTFDRSVTLLEVCGSWPEGFGLRHMSSMEHSE
 EGLRERLADAMAESP SRD VVGS TELQREGSIETLSNSSGSTSGSIPRNF DGYSPLPTNESQPLSLFPT
 GFP

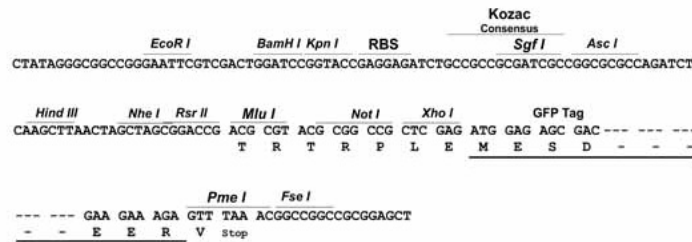
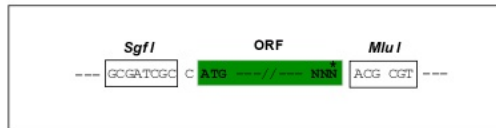
TRTRPLE - GFP Tag - V

Restriction Sites:

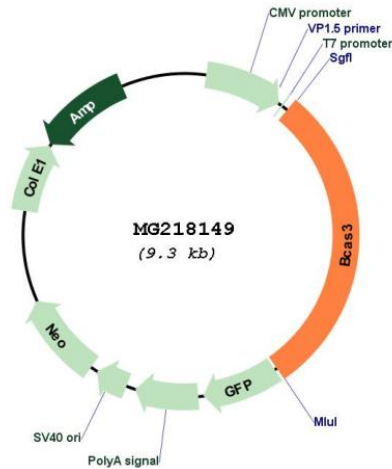
SgfI-MluI

Cloning Scheme:

Cloning sites used for ORF Shuttling:



Plasmid Map:



ACCN: NM_001166642

ORF Size: 2739 bp

OTI Disclaimer: The molecular sequence of this clone aligns with the gene accession number as a point of reference only. However, individual transcript sequences of the same gene can differ through naturally occurring variations (e.g. polymorphisms), each with its own valid existence. This clone is substantially in agreement with the reference, but a complete review of all prevailing variants is recommended prior to use. [More info](#)

OTI Annotation: This clone was engineered to express the complete ORF with an expression tag. Expression varies depending on the nature of the gene.

Components: The ORF clone is ion-exchange column purified and shipped in a 2D barcoded Matrix tube containing 10ug of transfection-ready, dried plasmid DNA (reconstitute with 100 ul of water).

Reconstitution Method:

1. Centrifuge at 5,000xg for 5min.
2. Carefully open the tube and add 100ul of sterile water to dissolve the DNA.
3. Close the tube and incubate for 10 minutes at room temperature.
4. Briefly vortex the tube and then do a quick spin (less than 5000xg) to concentrate the liquid at the bottom.
5. Store the suspended plasmid at -20°C. The DNA is stable for at least one year from date of shipping when stored at -20°C.

RefSeq: [NM_001166642.1](#), [NP_001160114.1](#)

RefSeq Size: 3647 bp

RefSeq ORF: 2742 bp

Locus ID: 192197

UniProt ID: [Q8CCN5](#)

Cytogenetics: 11 C

Gene Summary:

Functions synergistically with PELP1 as a transcriptional coactivator of estrogen receptor-responsive genes. Stimulates histone acetyltransferase activity. Binds to chromatin (By similarity). Plays a role in angiogenesis. Participates in the regulation of cell polarity and directional endothelial cell migration by mediating both the activation and recruitment of CDC42 and the reorganization of the actin cytoskeleton at the cell leading edge. Promotes filipodia formation.[UniProtKB/Swiss-Prot Function]