

Product datasheet for **MG218096**

Atrip (NM_172774) Mouse Tagged ORF Clone

Product data:

Product Type:	Expression Plasmids
Product Name:	Atrip (NM_172774) Mouse Tagged ORF Clone
Tag:	TurboGFP
Symbol:	Atrip
Synonyms:	6620401K05Rik
Mammalian Cell Selection:	Neomycin
Vector:	pCMV6-AC-GFP (PS100010)
E. coli Selection:	Ampicillin (100 ug/mL)



[View online »](#)

ORF Nucleotide Sequence:

>MG218096 representing NM_172774
 Red=Cloning site Blue=ORF Green=Tags(s)

TTTTGTAATACGACTCACTATAGGGCGGCCGGAATTCGTCGACTGGATCCGGTACCGAGGAGATCTGCC
 GCC**CGGATCGCC**

ATGGCCGGGACCCCCGCACCGAACGCCACAGGAAACAGAGTGGCGGCCCTGGAGCCTTCCCGGTCTGT
 CTGATCCATTGAGAACCCTCCGAGCAAGCGGGCCGGAGCTTCTCTGAGACCACAGTCCCGGACCCCGA
 AGACCCATTTCGGTGAGCACGCGGAATTTACTGCGGACGACCTAGAGGAACTCGACATCCTCGCGTCACAG
 GCCCTGAGCCAGTGTCCCGTCGCGCCTCGGAACCTGTCCAGTGCTCATAAGGTCCGCCGATTAGATGGGT
 TACCAAAATAGTCTATAAGGAAAAGCAGAGAAGATATTCCAGTTAAAGATAATTTTGAATTAGAAGTACT
 TCAGATACAATACAAAGAACTTAAAGAAAAGCTGAAAGCAATGGAAGAAGAAATCCTAATTAAGAATGGA
 GAAATTAATTTTTCGTGACTCTCTGCGTCAGACAGAATCCGTTCTAGAAGAACAGAAAAGATCACATT
 TCCTTCTTGAGCAAGAAAAGACTCAAGCACTCAGTAAAAGGAAAAGGAATTCAGAAAAGCTCCAATC
 ACTGCAGTCTGAACTGCAGTTTAAAGACGCAGAAATGAATGAGTTAAGGACAAAGTCTCAGAGCAACGGA
 CGAACAAATAAGCCAGCCGCTCCCTCCGTCCTCCACGTCAGTCCAGGAAAGGCTTCTGTGGTTCTCA
 AGTCAGAAAGCATGTTCTCCACATGTTGGAAAAACAACCTTCCCTACAAAAGAATCTTTTAGTGCTAACAC
 GCCTCTCTCCACCCCTGTGAGACTGAGGCAGGACACAGATTTCTGGTGGGCCAAGAGGTTTCAGATAAT
 AAAAACACAGTCTGGGAGGTAGCCTCATGAAGCAAGATGTGCAGCAGAGAATTCGGTGTGAGGCTGGA
 TGCAGAGAAAAGATGCTCAAGTTCTATTTTGATAAACTTGTCTCTGAAGCAACCTTTGGTGCCAGGGTC
 ATCTCTAGGTCTTTGTACCTTCTGAGCAGTTGTCTGAGGTTCTACTGGCACCTCTTGCCAGCCACCA
 GGGCTCAGTACTTTCCCTGGGACTTCAGGCCTCAGGACCATCAGTCTTCTGATGGGCCATTTTCCCCT
 CTGCCCTGAGAGAAGCACAGAACTTGGCATTACTGGATTAATCTGGTTGCCAGGACTGAGAGCTCACA
 TGATGGAGACATGGCAGGCAGAAGAGTCTTCCCGCTCCACCAGTTCCTGGAGCTGTGCATCTCCTTCT
 CTTGTGCAGTTTTTCGTGCGCTTACACTGCCAGGCTCTGCAAGATTTAGCCCCAGCTAAGAAGAGTGGGG
 TGCTGGGACTCTGCGACACATACCTCTGCATGAGCTCTGGGGTCGAGGCTAGCCAGAGGACTCCAT
 TCATGGCTTGGAGAGCTTTCTGTGGCATCACTCAGCGTCCTCAGAACCTGGTGTGCCACAGTGGGGCA
 GTTGTCTGCCTGTTACTGTGAGGCATGGGGACAGAAGCTGCCGCCAGGGAAGGAACTTGGTCCAGACTT
 GTGCAGATACAACCTCAGCCTCCAGGGAGGATGCTCATGACCAAGACCAGCACCCACTGCTAAAGATGCT
 TCTTCAGCTGATGGCTTCTCCTCTGCAGCATCAGGTCATTTTCAAGCCAGTGCCTGGGCTGTGCCTC
 AAAGTTTTGGTGAATTAGCAGAAAACGCTTCCCTGATTTGTTGCCAGGTTCTCCTGTGTGTTCCCGG
 TGTGGCCACAGTGCCTCGGCTCAGCGCTGCCGCTGCCCTGTGTGCTCCTGGCTGTTGAGCTGCTCTCTGT
 GCTGCTGGACATGACAGCCTAGCATGGCAGTATGCTCCCACCCAGAAGGCTGCCTTCTCTGAGGCTG
 TACATGTACATCACATCAAGGCCTGACAGAACGGCCTCAGAGACACAGTGGCTTCAGCTGGAACAAGAGG
 TAGTATGGCTCTTGGCCAAGCTGAGTGTACAGAGCCCTGCCCCGCTGGCATTGGTTCTGACTGTCACTG
 CAATGTAGAGGCAGTCAAGCGCTCACTGTGATGTTGCACAGGCAATGGCTGACGGTGCGGCGGGCAGGA
 GGTCCAAGGACCCACCAGCAGAAGCAGACGATACGCTGTCTGCGGGACACTGTGCTGTGCTGCATAGCC
 TATCTCAGAAGGACAAGCTTCTCACTGTGCACTGTGTCGAGGTCCTGCATCAGTACGACCAGGTGATGCC
 AGGGGTCAGCATGCTGATTCGAGCCCTTCTGATGTGACTGACTGTGAAGAGGCTGCCCTGGATGACCTC
 TGTGCTGCGGAGACTGATTTGGAAGACTCTGAGATGGACTGTAAC

ACGCGTACGCGGCCGCTCGAG – GFP Tag – GTTTAA

Protein Sequence: >MG218096 representing NM_172774
 Red=Cloning site Green=Tags(s)

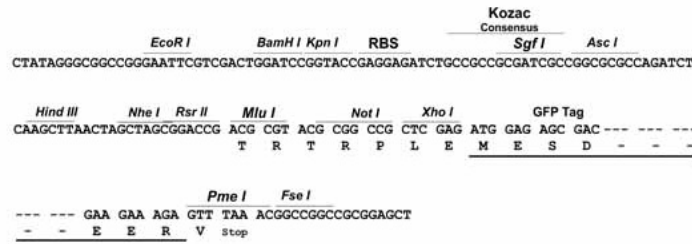
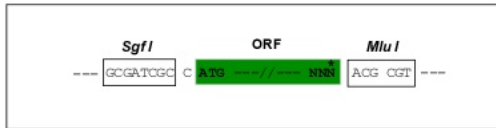
MAGTPAPNSHRKQSGGLEPFPGLSRSIENPPSKRARSFSETTVDPDPDPFGEHAEFTADDLEELDILASQ
 ALSQCPVAPRNLSSAHKVRRLDGLPNSPIRKSREDIPVKDNFELEVLQIQYKELKEKLMAMEEILIKNG
 EIKILRDSLRTQTESVLEEQRSHFLLEQEKTQALSEKEKFSRKLQSLQSELQFKDAEMNELRTKSQSNG
 RTNKPAAPSVSHVSPRKGSVVVKSEACSPHVGKTTFFPTKESFSANTPLFHPCQTEAGHRFLVQGVEVSDN
 KNHSLGGSLMKQDVQQRILADGWMQRKDAQGSILINLLKQPLVPGSSLGLCHLLSSCEVPTGTLLQPP
 GLSTLPGTSGRLTISSSDGPFPSPALREAQNLAFITGLNLVARTESSHDGDMAGR RVFPLHQLPGAVHLLP
 LVQFFVGLHCQALQDLAPAKKSGVPGDSATHTSCMSSGVEASPEDSIHGLESFVASLSVLQNLVCHSGA
 VVCLLLSGMGTEAAAREGNLVQTCADTTASREDAHDQDQHPLLKMLLQLMASSAASGHFQASVLGLCL
 KVLVKLAENASSDLLPRFSCVFPVLPQCLGSALPLPCVLLAVELLVLLDHDLSLAWQLCSHPEGCLLLRL
 YMYITSRPDRTASETQWLQLEQEVVWLLAKLSVQSPAPAGIGSDCHCNVEAVRALTVMLHRQWLTVRRAG
 GPRTHQKQTI RCLRDTVLLHLSLQKDKLFTVHCVEVLHQYDQVMPGVSM LIRALPDVTDCEEALDDL
 CAAETDLEDSEMDCN

TRTRPLE - GFP Tag - V

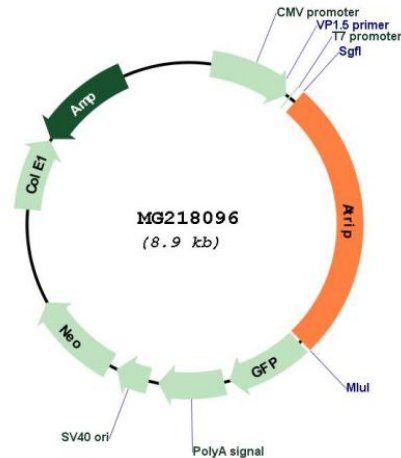
Restriction Sites: SgfI-MluI

Cloning Scheme:

Cloning sites used for ORF Shuttling:



Plasmid Map:



ACCN: NM_172774

ORF Size: 2355 bp

OTI Disclaimer: The molecular sequence of this clone aligns with the gene accession number as a point of reference only. However, individual transcript sequences of the same gene can differ through naturally occurring variations (e.g. polymorphisms), each with its own valid existence. This clone is substantially in agreement with the reference, but a complete review of all prevailing variants is recommended prior to use. [More info](#)

OTI Annotation: This clone was engineered to express the complete ORF with an expression tag. Expression varies depending on the nature of the gene.

Components: The ORF clone is ion-exchange column purified and shipped in a 2D barcoded Matrix tube containing 10ug of transfection-ready, dried plasmid DNA (reconstitute with 100 ul of water).

Reconstitution Method:

1. Centrifuge at 5,000xg for 5min.
2. Carefully open the tube and add 100ul of sterile water to dissolve the DNA.
3. Close the tube and incubate for 10 minutes at room temperature.
4. Briefly vortex the tube and then do a quick spin (less than 5000xg) to concentrate the liquid at the bottom.
5. Store the suspended plasmid at -20°C. The DNA is stable for at least one year from date of shipping when stored at -20°C.

RefSeq: [NM_172774.3](#), [NP_766362.2](#)

RefSeq Size: 2572 bp

RefSeq ORF: 2358 bp

Locus ID: 235610

UniProt ID: [Q8BMG1](#)

Cytogenetics: 9 F2

Gene Summary: Required for checkpoint signaling after DNA damage. Required for ATR expression, possibly by stabilizing the protein (By similarity).[UniProtKB/Swiss-Prot Function]