

Product datasheet for **MG218087**

Pp2d1 (NM_173449) Mouse Tagged ORF Clone

Product data:

Product Type:	Expression Plasmids
Product Name:	Pp2d1 (NM_173449) Mouse Tagged ORF Clone
Tag:	TurboGFP
Symbol:	Pp2d1
Synonyms:	4921523A10Rik
Mammalian Cell Selection:	Neomycin
Vector:	pCMV6-AC-GFP (PS100010)
E. coli Selection:	Ampicillin (100 ug/mL)



[View online »](#)

ORF Nucleotide Sequence:

>MG218087 representing NM_173449
 Red=Cloning site Blue=ORF Green=Tags(s)

TTTTGTAATACGACTCACTATAGGGCGGCCGGAATTCGTCGACTGGATCCGGTACCGAGGAGATCTGCC
 GCC**GCGATCGCC**

ATGAATTGGAACTGTATTCTTCTCCTTTAAGAGTGTGGAGATCAAAAGTGTGGGATGAGAAA
 CAACATTTACTTCTGATGAGAATCTCAAGATTGGCAAAATGGTTGGCAAAAGGAGAAGGCC
 TAGACCAAA GCGCTCCATCGACCTGGAGGATTCCACTGAGCAGCTGATTTCTGGTGACATGGT
 CACATCCCCTGCTCTGTCTGCTACCGAGA
 ACTGAACAAAGCTAGGAATTTTCTCCATAAGAAACATCACAATGCTCTGAGTATGC
 TGGGTTTCCAGTGGATGGGAGGGAGGCAACCAAGCCAAACTGGTCAGTCTTATAGAGAGT
 GTATAATCTCTAACCTTTTGGAGATCTTCTACATACAATGAAAAAGTCTTACAATGTGA
 ACTACGCATTTGAGTTCTTTGGAAGAAACAAGTCCATCATACTCAAACCTTTGTGATAAG
 GTTGGCGAGACTTCTACGATTCTC
 CAACAGCAACCATCTGATGATTAAGGTATAGCCATCTGTAGCAATAATAATTCAGCCTG
 GAAAGCGGA GCCGAAGTGTAAATCACGGTCGTGAACGATTTTGGTGATAAGGCCAATGT
 GTGCTTTTTCGGTTATTTGATAGCCATTACGGTTATGCAGCAGCAGACCTGGCATCAA
 AGGAGTTTCAGGTTTTACTTCTCCATCAATGTCTATACAGGATCCTTCTACCAATGAC
 AGCTGAGCAGAAGCAACTCATCAATTCCTTTGACACGGTGTTCAGGGAGGAATACAG
 AGCCAGAGAAGGCCCTTCTCTCCACATACAAAACCTTCAGAACTAGTAGACGGGAGT
 ATACACAAAGCCTTTGCAAAGGCATTTGGAGAATGGATAGGCTTCTACGGCTTGA
 AGGAATGAGACTTCCCGGTTTCGCTGGAGCGGCTGCTCGCAGTCACTTGATATTAG
 AGGGTGGGATTAAGAACCACATGCTAATAAAGACTGGGAAAAACCTATCAGCAGGGT
 CCACCACTTCCCTCCAGAACTCCACAGATCATATCTGGAGTACTACACCTGGCAAT
 GCTGGAACGTCGAAGCAGTCTTATGCA GAAATGGAAAAGGGTTTTGCCTGACCA
 AGAACACAGTACACGAAACCAAGAAAGAAAGAGAGTCTTTACAGCGAAGCAGT
 GATCAGTTCAGATGACCCCTATGGCCTCCTGGATGGGCACATCAAAACCACCCGG
 GGTCTTGATTCCATGGAACCTCAGACTAAAAAGTCCATTATTCAGCACC
 GAAACAATCTCTGTCCCTATAGATGATCTATGTCAGTTTCTCATCTTAGCCACT
 AATGGACTTTGGCAAGTTTTGGACAAGAAGGAAGTCACTGCAGTGGTAATCACCT
 TGTTCATGCATATAAAGAAACCCATGTTCTCTCGCCCTAAAAGCAAA
 CCCTGGCCACCTATAGGCCTTCTTTCCCACCAGACAGTAACATCCGAGTGT
 GTCCAGTACCAGCCTGAAAATGAAGACATTATGTCAACTGCAGATGGGACGAA
 AGGGCTATCTGACTCAATATATGCTGAAGCTTACTCATCAGGTACATTTTCT
 CCAAAAGTGACCCCTTATGACCCTTGTAGCACAAAAGAAAATAGCAGC
 TTACCCACTATAGACAGTAAGCAGGAAAATGAGAAAGAACTATGTATTA
 AGAATTTCTACAAAGGTGCAGCTGAGTACATTGGCTGTGAACCTGTAAGT
 GCTGCAATAGAAAGGGGTTCCAGAGACAGCATCACTGTTATGGTAATGTTTCT
 CAATGGGAGCGAGTATCACAGGCTGACA

ACGCGTACGCGGCCGCTCGAG - GFP Tag - GTTTAA

Protein Sequence:

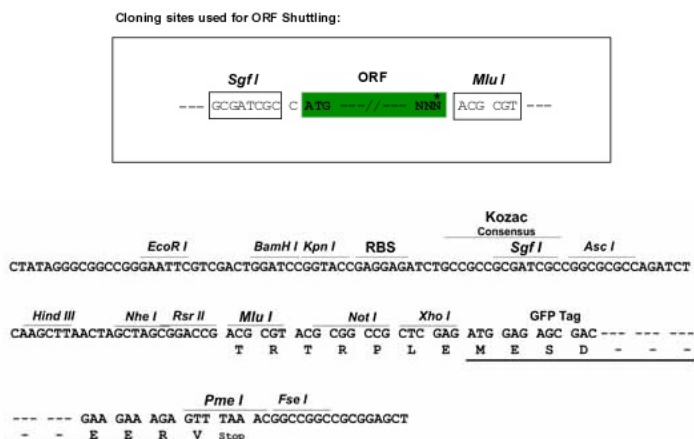
>MG218087 representing NM_173449
 Red=Cloning site Green=Tags(s)

MNWELYSPLRVFWRKVVDEKSTFTSDENLKI
 GKVMGKRRRPRPKRSIDLEDSTEQLISGDMVTFPCS
 VCYRELNKARNFLHKKHHNAL SMLGFQWMGGRQPKPL
 VSLHRECIISNLLRSSTYNEKVLHNVNYAFEF
 LWKKQVPSYFKL CDKVGESTSTYSPNSNHLMIK
 GIAICSNNSAWKAEPNCKFTVNVDFGDKANVCFGLF
 DSHYGAAADLASKEFQVLLHQLSIQDPSYQMTAEQ
 QLINSFDTVFREEYRAREEAFSSTYKTFRTSR
 REYEDTHKAFKAFWRMDRLRLGRNETSRVRWGS
 CSALTCILEGGIKNPHANKDWEKTYQQGSTSLPFQ
 KTPQIISGVLHLANAGNVQAVLCRNGKGFCLTKEH
 STRNTKERRRVLYSEAVISSDDPYGLLDGHIKTR
 GLGFHGNLRLKKSIIIPAPQTISVPIDDLQFLIL
 ATNGLWQVLDKKEVTALVITLFHAYKETHVPRPKSK
 PWPPIGLLSPPDSNIRVLFQYQPENEDIMSTADG
 TKGLSDSIYAEAYTHQGTFSKPVTPYDPCSTKENS
 LPTIDSKQENEKELCIKNFYKGAEEYIGCELVSA
 AIEGGSRDSITVMVFLNGSEYHRLT

TRTRPLE - GFP Tag - V

Restriction Sites:

Sgfl-MluI

Cloning Scheme:


ACCN: NM_173449

ORF Size: 1860 bp

OTI Disclaimer: The molecular sequence of this clone aligns with the gene accession number as a point of reference only. However, individual transcript sequences of the same gene can differ through naturally occurring variations (e.g. polymorphisms), each with its own valid existence. This clone is substantially in agreement with the reference, but a complete review of all prevailing variants is recommended prior to use. [More info](#)

OTI Annotation: This clone was engineered to express the complete ORF with an expression tag. Expression varies depending on the nature of the gene.

Components: The ORF clone is ion-exchange column purified and shipped in a 2D barcoded Matrix tube containing 10ug of transfection-ready, dried plasmid DNA (reconstitute with 100 ul of water).

Reconstitution Method:

1. Centrifuge at 5,000xg for 5min.
2. Carefully open the tube and add 100ul of sterile water to dissolve the DNA.
3. Close the tube and incubate for 10 minutes at room temperature.
4. Briefly vortex the tube and then do a quick spin (less than 5000xg) to concentrate the liquid at the bottom.
5. Store the suspended plasmid at -20°C. The DNA is stable for at least one year from date of shipping when stored at -20°C.

RefSeq: [NM_173449.3](#), [NP_775625.1](#)

RefSeq Size: 2476 bp

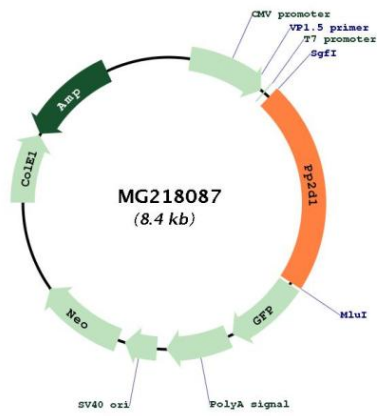
RefSeq ORF: 1863 bp

Locus ID: 110332

UniProt ID: [Q8BVT6](#)

Cytogenetics: 17 C

Product images:



Circular map for MG218087