

Product datasheet for **MG218085**

Dock9 (NM_001081039) Mouse Tagged ORF Clone

Product data:

Product Type:	Expression Plasmids
Product Name:	Dock9 (NM_001081039) Mouse Tagged ORF Clone
Tag:	TurboGFP
Symbol:	Dock9
Synonyms:	AA959601; AW538057; B230309H04Rik; D14Wsu89e; mKIAA1058; Zizimin1
Mammalian Cell Selection:	Neomycin
Vector:	pCMV6-AC-GFP (PS100010)
E. coli Selection:	Ampicillin (100 ug/mL)
ORF Nucleotide Sequence:	>MG218085 representing NM_001081039 Red=Cloning site Blue=ORF Green=Tags(s)

TTTTGTAATACGACTCACTATAGGGCGGCCGGAATTCGTCGACTGGATCCGGTACCGAGGAGATCTGCC
GCC**CGATCGCC**

ATGCAGGCTGAGAAGTACAGGACGAGCGGTAGAAGTGACAAGAAGGAGTTGGTCATCGAGTCCCCCTGC
AGTACAAGGATGCAGCTCAGGCAGACGTGGAGGCAGAGAGCTCCACATTGGCAAAGCCAAAGCTGATCGA
GCCACTGGACTACGAAAATGTCATCGTGCAGAAGAAGACGCAGATCCTAAACGACTGCCTGCGGGAGATG
CTCCTCTTCCCTTATGATGACTTCCAGACGGCCATCCTGAGGCGGCAGGGGCGGTACTTACGCTCCACGG
TCCCTGCAAAATGCAGAGGAGGAAGCACAGAGCCTGTTTGTCACTGAGTGCATCAAAACCTACAACCTGA
CTGGCATCTTGTGACCTATAAATATGAAGATTACTCAGGAGAGTCCGACAGCTTCCAAACAAAGTGCC
AAGCTGGATAAACTTCCGGTCCACGTCTATGAAGTCGATGAGGAGGCCGACAAAGATGAGGATGCTGCTT
CCCTTGGGTCTCAGAAGGGCGGGATCACCAAGCATGGCTGGCTGTACAAAGGCAACATGAACAGCGCCAT
CAGCGTGACGATGAGGTCATTCAAGAGGCGGTTTTTCCACCTGATTCAACTTGGCGATGGATCCTATAAT
CTAAACTTTTATAAAGATGAGAAGATCTCAAGGAACCGAAAGGGTCCATATTCTGGATTCTCGCATGG
GTGTGATCCAGAACAACAGAGTCAGGCGCTTCGCTTTTGAGCTCAAGATGCAAGACAAAAGCAGTTACCT
TCTGGCGGCAGACAGCGAGGCAGAGATGGAGGAGTGGGTCAGTGTCTCAACAAGATCCTCCAGCTCAAC
TTTGAAGCCGCAATGCAAGAAAAGCGGAACGGGGATCCTCATGAAGATGACGAGCAGAGCAAACTGGAAG
GTTCTGGTCCGGTTTGGACAGCTACCTGCCTGAACTTGCCAAGAGCACAGAGAAGCAGAGATCAAATT
GAAAAGCGAGAGCAGAGTGAAGCTTTTTTACTTGGACCCAGATACCCAGAAACTTGACTTCTCATCCGCT
GAACCAGAAGTGAAGCCCTTTGAAGAAAAGTTTGGGAAAAGGATTCTCGTCAAGTGAACGATTTGTCTT
TTAACCTGCAGTGTGTGCGCAGAGAATGAGGAAGGACCCACGACAAATGTCGAGCCTTTCTTTGTAC
CCTGTCCCTGTTGACATAAAATACAACCGAAAGATTTCTGCTGACTTCCACGTGGACCTGAACCACTTC
TCAGTGCCGAGATGCTGACCCACGTCACGCTCTGATGAATGGTGGCCAGAGCCACCTGCCTTCC
AGGATGCCCTTACACAGCCATGCAGTATCCGAAGCAGGGAATTTTTTCAGTCACGTGTCCTCACCAGA
CATATTTCTTGTGCCAGAATTGAGAAGTCTCCAAGGAAGCATCACGCACTGTGCTGAACCGTATATG



[View online »](#)

AGAAGCTCAGACTCTTCTAAGGTTGCCAGAAAGGTGCTGAAGAATGCCAAGCAGGCATGCCAAAGACTAG
GACAGTACAGAATGCCATTGCGCTGGGCAGCAAGGACGTTGTTTAAAGACACCTCTGAAAACCTGGATAA
AAACGCCAGATTTTCTGCCATCTACCGCAAGACAGCAATAAGCTTTCAAATGATGACATGCTCAAGCTG
CTCGCAGACTCCGGAAACCTGAGAAGATGGCCAACTCCCAGTGATTTTAGGCAATCTAGACATTACAA
TTGACAGTGTTCCTGTGACTCCCTAATTATCTAAATTCATCATACATTCCCATGAGGCAATTTGAAAC
CTGCAGTAAATCTCCAATCACTTTTGAAGTAGAGGAGTTTGTGCCCTGCATACCAAGCACACCCAGCCT
TATACAGTCTACAGCAATCACCTTTATGTTTACCCTAACTTGAATATGACAGCCAGAAGTCGTTTG
CCAAGGCCAGAAACATTGCTATCTGCATTGAGTTCAAGGATTCTGATGAAGAAGACTCTCAACCCTGAA
GTGCATTTACGGCAGACCTGGTGGCCCGTGTTCACGAGAAGTGCCCTTGCCGCGTCTACACCATCAG
CAAAACCCAGAATTCTACGATGAGATCAAGATAGAGCTGCCCGCCAGCTGCATGAGAGGCACCATTTAC
TGTTACCTTTCTCCACGTGAGTGCATAACTCCACCAAGGAAGCAGGAAGAAGAAGGACGCTGTGGA
AACGCAGTTGGCTTTTCTGGCTGCCTCTCTGAAAGATGGAAGGGTGTGACGAGTGAGCAGCACATC
CCCGTCTCGGCTAACCTGCCATCTGGCTACCTCGGCTACCAGGAGCTCGGCATGGCAGGCATTATGGTC
CAGAGGTTAAGTGGTGAAGGAGGCAAGCCACTGTTGAAGATCTCCACTCATCTGGTTTCCACAGTGTA
CACTCAGGATCAACATTTACATAATTTTTTCCAATACTGTCAGAAAACGGAACTCTGGAGCCCAAGCCTCA
GGGAGTGAAGTAGTAAAATACCTTAAAGAGTCTGCATGCGATGGAAGGCCATGTGATGATCGCCTTCTTGC
CGACCATTTTAAATCAGCTATTCAGAGTCTCACAAAGAGCCACCCAGGAGGAGTTGCTGTGAACGTGAC
ACGGGTCAATTTATCATGTGGTTGCCAGTGCCATGAGGAAGGATTGGAGAGCCACTTGAGGTCATATGTT
AAGTTTGCCTATAAGGCTGAGCCGTACGTTGCATCTGAGTATAAGACAGTGCACGAGGAACTGACGAAAT
CCATGACCACCATTCTCAAGCCTTCTGCCGATTTCTTACCAGCAACAACTTCTGAAGTACTCTTGGTT
TTTCTTTGATGTGCTGATAAAGTCCATGGCTCAGCATTGATTGAAAATAACAAAGTCAAGTTACTGCGG
AACCAGAGATTTCCGGCCTCTACCATCAGCTGTGGAACCGTGGTGAACATGCTGATGCCACATATCA
CCAGAAAATTTGAGATAACCCAGAAGCATAAAAATGCCAATCACAGCCTCGTGTTCATCAAGAG
ATGCTTACCTTTCATGGACAGAGGCTTCGTCTTCAAGCAGATCAACAACACTACATCAGTTGCTTTGCTCC
GGGACCCCAAGACTCTCTTTGAGTACAAGTTTGAAGTTTCTCCGCGTGGTGTGCAACCATGAACACTATA
TTCCTTTGAATTTGCCGATGCCATTTGAAAAGGAAGAATTGAGAGATACCAAGATCTCCAGCTTGACTA
CTCCTTAACAGACGAGTTCTGCAGAAACCACTTCTTGGTGGGACTGTTGCTAAGGGAGGTGGGCACTGCG
CTCCAGGAGTCCGGGAGGTCCGAGTCTCGCCATCAGCATGCTCAAGAACCTGCTGATAAAACATTCTT
TTGATGACAGATACAATTCGAGGAGTACCAGGCAAGGATAGCCACTCTCTACCTGCCTCTGTTTGGTCT
GCTTATTGAAAATGTCCAGCGGATCAACGTGAGGGATGTGTACCCTTTCTGTGAACCCGGGCAGTATC
GTGAAGGACGAAGCCCTGGCTGTGCTGTGGAAATCCACTCATGACTCCGACAGGGAACACACTTG
ACCACAGCTGCACAAAGACCTTGGGCGCCATCTCTGGCATTGCTTCTCCGTATACAGCTCAACCCC
CAACATCAACAGCGTGAGAAATGCCGACTCAAGAGGCTCTCTCATTAGCACGGACTCAGGGAACAGCCTT
CCAGACAGGAACCCCGAGAAGAGCAACTCTCTGGATAAGCAGCAGAGTGGCATGCTGGGAAATCCGTGG
TTCGATGCGCAAACTGGACCAGTCTGAGATCAAGAGCCTGCTGATGTGTTTCTCTACGTGCTGAAAAG
CATGTCTGACGATGCCCTGTTTACATATTGGAACAAAGCTTCAACTGCTGAATTGATGGATTTCTTTACA
ATATCTGAGGTCTGCCTGCACCAGTCCAGTACATGGGAAGCGATACATAGCCAGGAACAGGAGGGGT
TGGGACCCATAGGTGATGATCGAAAGTCTCAGACATTGCCTGTTTCCCGTAACAGAACAGGAATGATGCA
TGCCAGATTGCAGCAGCTGGGCAGCCTGGATAACTCTGTCACTTTTAAACCACAGTACGGCCACTCAGAG
GCAGATGTCGTTACCAGTCTGCTTCTCGAAGCCAACATCGCTACTGAGGTCTGCCTCACAGCGCTGGACA
CCCTCTCTCTTCACTGCTTTTAAAGAACCAGCTCCTAGCTGATCATGGGCATAATCCCTCATGAA
GAAAGTTTTGACGTCTACCTGTGTTTCTTCAAAAACACCAGTCAAGAAATGGCTTTAAAAAACGCTTTT
ACTGCCTTAAAGTCTCTAATTTATAAGTTCCTTCCGCTTCTACGAGGGGCGGGCGGACATGTGTGCT
CCCTGTGCTATGAGGTCTCAAGTGTGCAACTCCAAGCTCAGTCCATCCGGACGGAGGCTCCAGCT
GCTCTACTTCTGATGAGGAACAACTTCGACTACACAGGAAAGAAGTCTTTTGTTCGGACGCACTTACAG
GTCATCATCTCTGTCAGCCAAGTATTGCAGATGTGGTTGGCATTGGAGGAACAGATTCCAGCAGTCT
TGCTATCATCAACAAGTGTGCCAACAGCGACCGGATCATCAAGCACACCAGCTTTTCTCTGATGTGAA
AGATTTGACTAAGAGGATCCGCACAGTCTGATGGCCACAGCCAGATGAAGGAGCACGAGAACGACCCG
GAGATGCTGGTGGACCTCCAGTACAGCCTGGCTAAGTCTACGCCAGCACCCCTGAGCTCAGGAAGACGT
GGCTAGACAGTATGGCGAGGATTCAGTAAAAATGGGGACCTCTCAGAGGGCGGCAATGTGCTATGTCCA
CGTGACAGCCTTGGTGGCAGAATATCTCACACGGAAAGAAGTGCCTAGCACTCCAGCGGGAACCACT
GCCTTCCCTACAGCCATAGCACCTGCCAGAGGAAGAGCTGGGGAGGCATGTTACAGACAGGGGTGCACAG

```
CCTTCAGGGTTATCACACCAAACATCGATGAAGAGGCTTCCATGATGGAAGACGTCGGCATGCAGGACGT  
CCATTTCAACGAGGATGTGCTGATGGAGCTGCTGGAGCAGTGTGCGGATGGACTTTGGAAGGCGGAGCGC  
TACGAGCTGATCGCTGACATCTATAAGCTCATCATCCCCATCTACGAAAAGCGGAGGGATTTGAGAGAC  
TAGCCCATCTGTATGACACGCTGCACCGCGCATACAGCAAAGTGACAGAGGTCATGCACTCGGGCCGAG  
GCTCCTGGGGACCTACTCCGGGTGGCCTTCTTTGGACAGGGTCTTTCGAAGACGAAGATGGGAAGGAA  
TACATCTACAAAGAGCCCAAGCTCACGCCTCTGTCAGAGATTTCTCAGAGACTCCTTAAACTTTACTCGG  
ATAAATTTGGTTCCGAAAATGTCAAATGATACAGGATTCTGGCAAGGTCAACCCGAAGGATCTGGACTC  
CAAGTTTGCTACATCCAGGTGACCCACGTGACCCCATTTCTTTGACGAAAAGGAGTTACAAGAGAGGAGA  
ACAGAGTTTGAACGATGTCACAACATCCGGCGCTTCATGTTTGAGATGCCCTTCACCCAGACCGGAAGA  
GGCAGGGTGGCGTGGAGGAGCAGTGTAAAGCGGGGACCATCCTGACAGCAATACACTGCTTCCCCTACGT  
GAAGAAGCGGATCCCTGTCATGTACCAGCACCACACTGACCTGAACCCCATTTGAGGTGGCCATCGATGAA  
ATGAGCAAGAAGGTGGCCGAGCTCCGCCAGCTCTGCTCGTCGGCTGAAGTGGATATGATCAAACGCAGC  
TCAAACGCAGGGCAGTGTGAGCGTCCAGGTCAATGCTGGTCCGCTAGCATATGCCCGAGCCTTCTCGA  
TGACACCAACACAAAAAGATACCCTGACAATAAGGTGAAACTGCTGAAGGAAGTTTTCAGGCAATTTGTG  
GAAGCTTGTGGTCAAGCCTTGGCAGTGAACGAGCGTCTCATTAAAGAAGACCAACTGGAGTACCAGGAAG  
AGATGAAGGCCAACTACAGGGAGATGGCCAAGGAGCTCTCCGACATCATGCGTGAGCAGATTTGCCCCCT  
GGAGGAGAAGACAAGCGTGCTACCAAATTCCTGCACATCTTCAACGCCATCAGCGGGACACCAACAAGC  
ACAGTGGTTCAAGGGTTGACCAGCTCGTCTCAGTTGTG
```

ACGCGTACGCGGCCGCTCGAG - GFP Tag - GTTAA

Protein Sequence: >MG218085 representing NM_001081039
 Red=Cloning site Green=Tags(s)

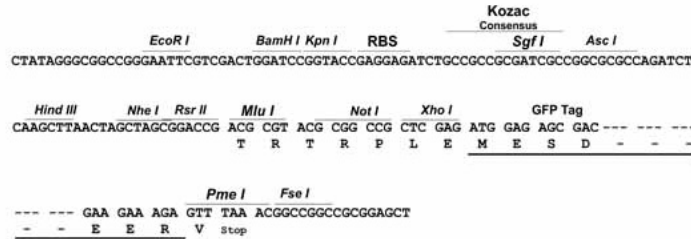
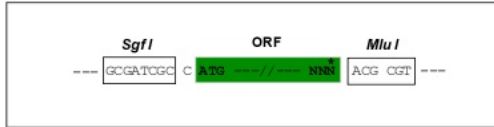
MQAEKYRTSGRSDKKELVIESPLQYKDAADVEAESSTLAKPKLIEPLDYENVIQKKTQILNDCLREM
 LLFPYDDFQTAILRRQGRYLSTVPANAEQSLFVTECIKTYNSDWHLVITYKYEDYSGEFRQLPNKVP
 KLDKLPVHVYEVDEEADKDEDAASLGSQKGGITKHGWL YKGNMNSAISVTMRSFKRRFFHLIQLGDG
 SYNLNFYKDEKISKEPKGSIFLDSCMGVIQNNRVRRAFELKMQDKSSYLLAADSEAEMEEWTVLNKILQLN
 FEAMQEKRNQDPHEDDEQSKLEGSGLDSYLPKSTREAEIKLKSESRVKLFYLDPDTQKLDSSA
 EPEVKPFEEKFGKRILVKCNLDFNLQCCVAENEEGPTTNVPEFFVTLSLFDIKYNRKISADFHVDLNFH
 SVRQMLTPTSPALMNGGQSPPAFQDALHTAMQYKQGFVSVTCPPHDFLVARIEKVLQGSITHCAEPYM
 RSSDSSKVAQKVLKNAKQACQRLGQYRMPFAWAARTLFDKTSGNLKNARFSAIYRQDSNKLSDMLKL
 LADFRKPEKMAKLPVILGNLIDTSVSCDFPNYLSSYIPMRQFETCSKSPITFEVEEFVPCIPKHTQP
 YTVYSNHLVYVPKYLKYDSQKSAKARNIAICIEFKDSDEEDSQPLKCIYGRPGPVFTRSAALAVLHHQ
 QNPEFYDEIKIELPAQLHERHLLFTFFHVSCDNSTKGTKKKDAVETQVGFVSWLPLLDKGRVLTSEQHI
 PVSANLPSGYLGYQELGMGRHYGPEVWVEGGKPLLLKISTHLVSTVYTQDQHLHNFYQYQKTESGAQAS
 GSELVKYLKSLHAMEGHVIAFLPTILNQLFRVLTRATQEEVAVNVTRVITHVVAQCHEEGLESHLRSYV
 KFAYKAEPYVASEYKTVHEELTKSMTTILKPSADFLTSNKLKYSWFFDVLIKSMAQHLIENNKVLLR
 NQRFPAHYHVAETVVNMLMPHITQKFRDNPEASKNANHSLAVFIKRCFTFMDRGVFKGINNYISCFAP
 GDPKTLFEYKFEFLRVVCNHEHYIPLNLPMPFGKGRIQRYQDLQLDYSLTDFEFCRNHFLVGLLREVGT
 A LQEFREVRVIAISMLKNLLIKHSFDDRYNSRSHQARIATLYLPLFGLLIENVQRINVRDVSPPVNP
 GSI VKDEALAVPAGNPLMTPQKGNLHDHSLHKDLLGATSGIASPYTASTPNINSVRNADSRGSLISTDSGNSL
 PDRNPEKSNLSDKQSGMLGNSVVRCDKLDQSEIKSLLMCFYVVKSMSSDALFTYWNKASTAELMDFFT
 ISEVCLHQFYMGKRYIARNQEGLGPIGHDRKSQTLPVSRNRTGMMHARLQQLGSLDNSVTFNHSYGHSE
 ADVVHQSLLLEANIATEVCLTALDTLSLFTLAFKNQLLADHGHNPLMCKVFDVYLCFLQKHQSEMALKNVF
 TALRSLIYKFPFAFYEGRADMCASLCYEVLKCCNSKLSIRTEASQLLYFLMRNNFDYTGKKSFVRTHLQ
 VIISVSQLIADVVGIGGTRFQQSLSIINNCA NSDRIKHTSFSSDVKDLTKRIRTVLMATAQMKEHENDP
 EMLVDLQYSLAKSYASTPELRTWLD SMARIHVKNGLSEAAMCYVHVTA LVAEYLTRKEADLALQREPP
 AFPYSHSTCQRKSWGGMFRQGCTAFRVI TPNI DEEASMMEDVGMQDVHFNEDVLMELLEQCADGLWKAER
 YELIADIYKLIPIIYEKRRDFERLAHL YDTLHRAYSKVTEVMHSGRRL LGTYFRVAFFGQGFEDGKE
 YIYKEPKLTPLSEISQRLKL YSDKFGSENVKMIQDSGKVNPKDLDSKFAYIQVTHVTPFFDEKELQERR
 TEFERCHNIRRFMFEMPFTQTGKRQGGVEEQCKRRTILTAIHCFYVVKRIPVMYQHHTDLNPIEVAIDE
 MSKKVAELRQLCSSAEVDMIKLQLKLQGSVSVQVNAGPLAYARAFLDNTKRYPDNKVKLLKEVFRQFV
 EACGQALAVNERLIKEDQLEYQEEMKANYREMAKELSDIMREQICPLEEKTSVLPNSLHIFNAISGTPTS
 TVVQGLTSSSSV

TRTRPLE - GFP Tag - V

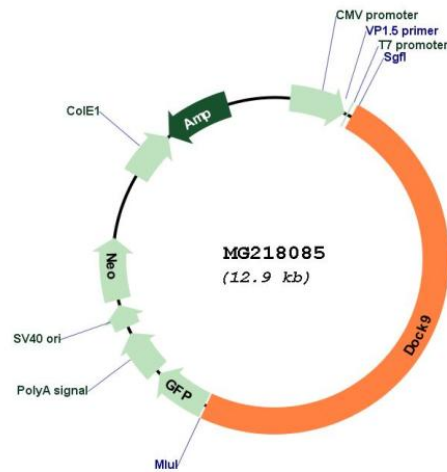
Restriction Sites: Sgfl-MluI

Cloning Scheme:

Cloning sites used for ORF Shutting:



Plasmid Map:



ACCN: NM_001081039

ORF Size: 6339 bp

OTI Disclaimer: The molecular sequence of this clone aligns with the gene accession number as a point of reference only. However, individual transcript sequences of the same gene can differ through naturally occurring variations (e.g. polymorphisms), each with its own valid existence. This clone is substantially in agreement with the reference, but a complete review of all prevailing variants is recommended prior to use. [More info](#)

OTI Annotation: This clone was engineered to express the complete ORF with an expression tag. Expression varies depending on the nature of the gene.

Components:	The ORF clone is ion-exchange column purified and shipped in a 2D barcoded Matrix tube containing 10ug of transfection-ready, dried plasmid DNA (reconstitute with 100 ul of water).
Reconstitution Method:	<ol style="list-style-type: none">1. Centrifuge at 5,000xg for 5min.2. Carefully open the tube and add 100ul of sterile water to dissolve the DNA.3. Close the tube and incubate for 10 minutes at room temperature.4. Briefly vortex the tube and then do a quick spin (less than 5000xg) to concentrate the liquid at the bottom.5. Store the suspended plasmid at -20°C. The DNA is stable for at least one year from date of shipping when stored at -20°C.
RefSeq:	<u>NM_001081039.1</u> , <u>NP_001074508.1</u>
RefSeq Size:	7910 bp
RefSeq ORF:	6342 bp
Locus ID:	105445
Cytogenetics:	14 65.28 cM