

Product datasheet for **MG218048**

Zfp800 (NM_001081678) Mouse Tagged ORF Clone

Product data:

Product Type:	Expression Plasmids
Product Name:	Zfp800 (NM_001081678) Mouse Tagged ORF Clone
Tag:	TurboGFP
Symbol:	Zfp800
Synonyms:	AA407452; Znf800
Mammalian Cell Selection:	Neomycin
Vector:	pCMV6-AC-GFP (PS100010)
E. coli Selection:	Ampicillin (100 ug/mL)



[View online »](#)

ORF Nucleotide Sequence:

>MG218048 representing NM_001081678
 Red=Cloning site Blue=ORF Green=Tags(s)

TTTTGTAATACGACTCACTATAGGGCGGCCGGGAATTCGTCGACTGGATCCGGTACCGAGGAGATCTGCC
 GCC**CGGATCGCC**

ATGCCTTTGAGGGACAAATACTGTCAAACGGACCACCATCATCACGGATGCTGCGAACCAAGTTTATATCC
 TGGAGCCTGGAGATCCTCCTTGTACAGCAACCAGTGCAGACATCCAAATCTGGTATTCAGCAAATAAT
 TGAGTGCTTTTCGATCAGGAACCAAACTTAAACATATTTTATTTAAAAGATGTGGACACTATTTTGGAA
 TGTAATATGCGTAGTCTCTTTAGAGGATTACCAAATTTAATTACCCATAAAAAATTTACTGCCAC
 CAAGTCTCAAATGGATGACAATCTTCTGATGTAATGATAAACAAAGCCAAGCCATAAGTATCTCT
 AGAAGCCATATATCCAAGAGTGGACAAGAGAGAATATATTATTAAGCTAGAACCCATAGAAACCAACCA
 AATGCAGTGTTCATATATTTCAAGGACTGATAACCCTGCTGAAGTGACCGAGTCAAGCAGTACACCTG
 AACAACTGAAGTCAAATACAGGAGACAAGCTCAGAACAGCTGAAAGCAGTCCCGACGCAGATACAGA
 GGTGGAGGAGCCATAGAGCCTCCTTCTATAGAGACTGTTGTAGATGAAGCTGCAGCTCCCCTGAGGAG
 CAACCTCAGGAATCACAGGCTGACTTGGAGACGCTGACAGTTCTGACCTTGGTACCAGTTGATATGTT
 GTCTTTGTAGAAAAGAATTCAATTCTAGACGAGGTGTTTCGTCGTCACATTCGAAAAGTACACAAAAAAA
 GATGGAAGAACTAAAAAATACATTGAAACACGGAAAGACTCCAAACCAGTCTTCAAAGGACGCAGTAAG
 AGTGTTCAGTTTCATTAAGTAGGAGCTGTCCAGTTTGTGTAATCATTGCTACAAAAGCGAATGTAA
 GGAGGCATTTTGTGAAGTTCACAGAGGACTAAGGAGGGATTCAATTACTCTGATATAGCGACAAAAGCC
 TGGGCAGCCTTTGTTCTGGATTCTGCTTCTCTAAAAATCTTTAAGACTCGCAAAACAAAAGTCTTCA
 AAGGCTGAATACAATTTAACTGCATGCAATGCCTCCTTTGCAAGAGGAAATACAGTTCACAAATAATGC
 TTAAGAGACATATGCAAATTTGCCACAAGATAACTCTTTCTGGAGCAAACCTAAAAGAGAGAAAGGCC
 TAATAATACTGCCAACAGTTCAGAAGTAAAAGTTGAGCTAGCAGATTCTGTAGAGTCTTACCCCTTCC
 ATTACCCATTCTCCACAGAATGAACTCAAGGGAACAAATCATTCAAATGAAAAAAGAACACACCAGCAA
 CACAGAAAAACAAAGTTAAACAGGACTCTGAAAGCCCTAAATCAGCTAGCCCTTCGGCTGCAGGTGGCCA
 GCAAAAAACCAGGAAACCAAACTTTAGCTGGCTTTGACTTTAAGCAACTTTACTGTAACTCTGTAAA
 CGCCAGTTTACTTCCAAGCAGAACTTGACTAAACACATTGAGTTGCACACAGATGGAAATAACATTTATG
 TTAAGTCTACAAGTGCCTCTCTGCCTTACGAAACCCGTCGGAACCGTATGTGATAAGACATATAAC
 TGTGGTTCATAAAAAGTCATCTCGTTACCTTGGGAAAATCACAGCCAGTTTAGAGATCAGAGCTATAAAA
 AAGCCTATTGATTTTGTCTAAACAAAGTGGCAAAAAGAGGCCCTTCAAGGGAGGAAGCAAAACATAATG
 ACTCAAAACAGGATGGCACTTCCAATTCTCAAGTAAAAAGTATGAAGTAGCCGACGTCGGTATTGAAGT
 GAAAGTCAAAAAAATTTTCTCTTACAGATGCAATAAATGTGGAAAGGCATTTGCCAAAAAGACTTAC
 CTTGAACATCATAAGAAAATCATAAGGCAATGCTACCAATTACCTGAAGGAAACAAAACCAAGGCC
 GAAGTACAAGATCTAAGGCTCTTGTC

ACCGTACGCGGCCGCTCGAG – GFP Tag – GTTTAA

Protein Sequence: >MG218048 representing NM_001081678
 Red=Cloning site Green=Tags(s)

MPLRDKYCQTDHHHHCCEPVYILEPGDPPLLQQPVQTSKSGIQQIIECFRSGTKQLKHILLKDVDITFE
 CKLCRSLFRGLPNLITHKKFYCPPSLQMDNLPDVNDKQSQAISDLLEAIYPRVDKREYI IKLEPIETNQ
 NAVFQYISRTDNPAEVTESSTPEQTEVQIQETSSEQLKAVPDADTEVEEAIEPPSIETVDEAAAPTEE
 QPQESQADLETSDSSDLGHQLICCLCRKEFNRRGVRRHIRKVVHKKKMEELKKYIETRKTPNQSSKGRSK
 SVLVLSRSCPVCCKSFATKANVRRHFDEVHRGLRRDSITPDIATKPGQPLFLDSASPCKSFKTRKQKSS
 KAEYNLTACKLLCKRKYSSQIMLKRHMQIVHKITL SGANSKREKGPNNANSSEVKVELADSVESPPS
 ITHSPQNELKGTNHSNEKKNTPATQKNKVKQDSESPKSASPSAAGGQKTRPKLSAGDFKQLYCKLCK
 RQFTSKQNLTKHIELHTDGNNIYVKFYKPLCTYETRRKRQDVIRHITVVHKKSSRYLGKITASLEIRAIK
 KPIDFVLNKVAKRGPSREEAKHNSKQDGTNSPSPKYEADVIGIEVKVTKNFSLHRCNKCGKAFKAKTY
 LEHHKTHKANATNSPEGNKTKGRSTRSKALV

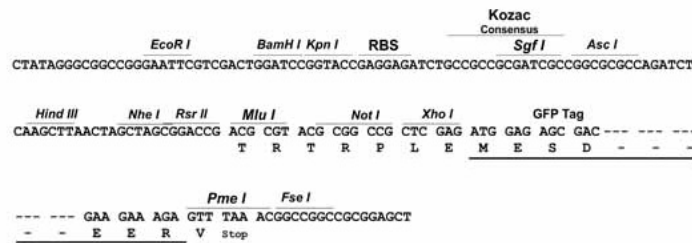
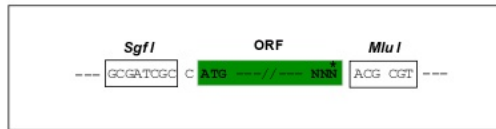
TRTRPLE - GFP Tag - V

Restriction Sites:

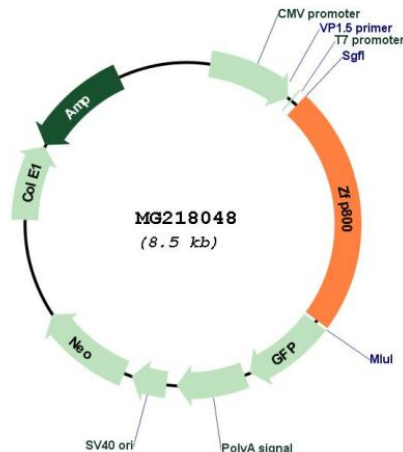
Sgfl-MluI

Cloning Scheme:

Cloning sites used for ORF Shuttling:



Plasmid Map:



ACCN: NM_001081678

ORF Size: 1986 bp

OTI Disclaimer: The molecular sequence of this clone aligns with the gene accession number as a point of reference only. However, individual transcript sequences of the same gene can differ through naturally occurring variations (e.g. polymorphisms), each with its own valid existence. This clone is substantially in agreement with the reference, but a complete review of all prevailing variants is recommended prior to use. [More info](#)

OTI Annotation: This clone was engineered to express the complete ORF with an expression tag. Expression varies depending on the nature of the gene.

Components: The ORF clone is ion-exchange column purified and shipped in a 2D barcoded Matrix tube containing 10ug of transfection-ready, dried plasmid DNA (reconstitute with 100 ul of water).

Reconstitution Method:

1. Centrifuge at 5,000xg for 5min.
2. Carefully open the tube and add 100ul of sterile water to dissolve the DNA.
3. Close the tube and incubate for 10 minutes at room temperature.
4. Briefly vortex the tube and then do a quick spin (less than 5000xg) to concentrate the liquid at the bottom.
5. Store the suspended plasmid at -20°C. The DNA is stable for at least one year from date of shipping when stored at -20°C.

RefSeq: [NM_001081678.2](#)

RefSeq Size: 3895 bp
RefSeq ORF: 1989 bp
Locus ID: 627049
UniProt ID: [Q0VEE6](#)
Cytogenetics: 6 A3.2-A3.3
Gene Summary: May be involved in transcriptional regulation.[UniProtKB/Swiss-Prot Function]