

Product datasheet for **MG218024**

Ak7 (NM_030187) Mouse Tagged ORF Clone

Product data:

Product Type:	Expression Plasmids
Product Name:	Ak7 (NM_030187) Mouse Tagged ORF Clone
Tag:	TurboGFP
Symbol:	Ak7
Synonyms:	4930502N02Rik; AK 7
Mammalian Cell Selection:	Neomycin
Vector:	pCMV6-AC-GFP (PS100010)
E. coli Selection:	Ampicillin (100 ug/mL)



[View online »](#)

ORF Nucleotide Sequence:

>MG218024 representing NM_030187
 Red=Cloning site Blue=ORF Green=Tags(s)

TTTTGTAATACGACTCACTATAGGGCGGCCGGAATTCGTCGACTGGATCCGGTACCGAGGAGATCTGCC
 GCC**CGGATCGCC**

ATGGCTGAAGAGGAAGTTCCTGCGACCACCGAAAAAGTTCGAAGATACAGAGGGTATTCATAAACCATC
 TGGACACCTATAGCAGCGGAAACATAGGAAAGTTCCTAGCTAACTGTGTGCTGGGGCTTACTGGAAGA
 GATTGGAGAGGAGGAGGAGGAGGACGAGACAAAGTCACTGTAGCTCCAGAAGCCCCACTACAAAA
 GTGAAGGAAGGCACCTTCCAGATCGTGGCACCTTGGTCAAGCCAGAGAGTGTCAAGCCAGACTTCGCTG
 TGGAGGCTTATAAGGGCATCTCCCGGGAAGACCTGCTCTCGCATCTCATGGAGTGCATGCTGCATCTA
 TAACATCACAGAGAATGTGCAGCAAGTGGAGGAAGCCTTGTGGCAGTCTCCGCATTGAATGAAGAAATC
 AGCCATTTTAAAAGCGAAAGGTGTTCAATTTGTTGTGCGACAGTATGACATGGGCGAGATCCAAACCC
 TGGACCCTGACGACAACGAGGTTCCCTTACAGAAAGGATTATCGAAGAAGGAAACATCACCCCAACT
 CCTGGACCATATCAACGCTGAAAAATTTGTTCTCAAATTTGAAAAAATGCCAAAAAGTTCGCAACTTAT
 GTAGTCGCCTCAGGACTTCAAGTATGGAGCAGAAGGAGGCATCTTACACAGTTTTTTAAGATGGCCTGGC
 TGGGCGAGGTCCCGCACTACCCGTGTTTGGAGATGGGACCAATTGCATTCCGGCCATTCATGTTGTTGA
 CCTCGCAGGAGTATCCAGAACATCATAGACCAGTGCCTCAAGCTTCACTACCTGGTGGCTGTGGATGAG
 GCTGTGCACACCTTGAAGACCTGGTCAAGTGCATCAGCAAAAATACCGGCCCTGGAAGATCCAGAAA
 TGCCCAAAGAAAATGCTTTCCTGACAAAGGACTTGACACAAGAGTACCTCGACCCTGTGGTCAACCT
 GAGAATGGAAGCCCTGTTTGTGAAGGAGAACTTAACTCCGCTGGGTGCGCCAAACAGGCTTCGTGGAG
 AACATCAACAGCATCCTCAAAGAGTACAAGCAAAGCCGGGATTACTGCCAATCAAGATCGCATCCTTG
 GTCCCTCTGCTGTGGGAAAATCCAGCATCTCTGAAGAGCTGGCCAAGTACTACAAACTGCATCACATCAA
 GATGAAGGATGTGATTGCTGAAGCCATAGCCAAACTGGAGGCGATTGTCGCACCCAAGGACTCAGTGGAA
 GGAGAAGAGGAAGGCGAAGAGGAGGAGGAGGAAGAGAACGTGGATGATGCCAGGAGCTCCTTGATGGCA
 TCAAGGAAAGCATGGAGCAGAACGCAGGTCCGCTAGAAGACCAATATATAATTGATTTGTGAAAGAAAA
 GCTCAAATCTATGCCTTGTAGGAACCAAGGTTTCATTTTGGATGGCTTCCCAAAGACCTATGATCAAGCG
 AAAGACCTGTTCAACCAGGAAGAGGAAGAGGAAGAAGAAGAAATCAGAGGCAAAATATTTCCCTATGATA
 AATTAATTACACCGAGTTTGTGTGCGGTCTGGACGCATCTGATGAGTTCCTGAAGGAGCGGGTATGAA
 TCTCCCGAGAGTGTGTCGGCAGGAACACTACAGCCAGGACCGATTCTCCGGTCTCTGAGCCACTAC
 CGGGACATCAATACAGATGATGAGACGGTCTTCAACTACTTCGACGAGCTTGAAATTCACCCGATACATA
 TCGATGTAGGAAAATCTGAAGACGCCAGAACAGACTTGTATCAAACAGCTCATCAAAGAGATCGGGAA
 GCCTCGGAATTACGGCTTAACAGACGAAGAAAAGGCAGAGGAGGAGAAGAAAGCAGCGGAGGAACGCTG
 GCCAAGGAGGCTGCTCAGACGGCAGAACTCGAACACAAGGAGGCCATGGAGATGGCGGAGAAGATAGCCC
 GCTGGGAGGAGTGAATAAACGGCTGGAGGAAGTAAAGCGAGAGGAGAGGGAGCTGCTGGAGGTACAGTC
 CGTCCCTGAGAAACTACCTGATGACGTACGTGATGCCACGCTCATGCAGGGCCTCAATGAATGCTGC
 AAGGTGAGACCCGAAGACCCCGTGGATTTCTGGCAGAGTATCTTTCAAGAACAATCCTGAAATGCAG

ACGCGTACGCGGCCGCTCGAG – GFP Tag – GTTTAA

Protein Sequence: >MG218024 representing NM_030187
 Red=Cloning site Green=Tags(s)

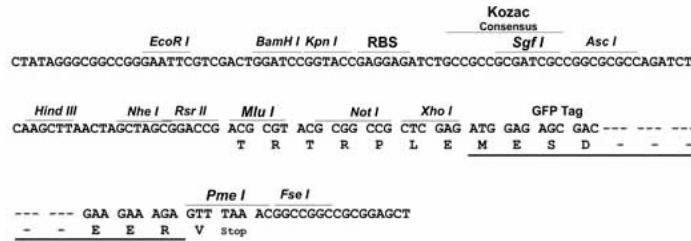
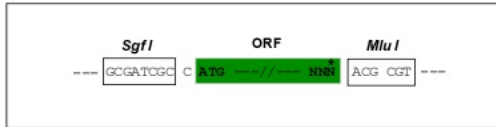
MAEEEVPATTEKVLKIQRVFINHLDTYSSGNIGKFLANCVAGASLEEIGEEEEEEDETKSAVAPEAPTTK
 VKEGTFQIVGTLVKPESVKPDFAVEAYKGISREDLLSHLMCEDAVIYNI TENVQQVEEALWAVSALNEEI
 SHFEKRKVFILLSTVMTWARSKPLDPDDNEVPFTEEDYRRRKHHPNFLDHINAELIVLKFKNNAKFFATY
 VVASGLQYGAEGGILHTFFKMAWLGEVPALPVFGDGTNCIPAIHVVDLAGVIQNIIDHVPKLMHYLVAVDE
 AVHTLEDLVKCI SKNTGPGKI QKVPKENAFLTKDLTQEYLDHLLVNL RMEALFVKENFNIRWVAQTGFVE
 NINSILKEYKQSRGLLPKIKICILGPPAVGKSSISEELAKYKLLHHIKMKDVIAEAI AKLEAIVAPKDSVE
 GEEEGEEEEENVDDAQELLDGIKESMEQNAGLEDQYIIRFVKEKLSMPCRNQGFILDGFPKTYDQA
 KDLFNQEEEEEEEEIRGKIFPYDKLITPEFVCGLDASDEF LKERVMNLPESV VAGTHYSQDRFLRSLSHY
 RDINTDDETVFNFYFDELEIHPHIDVKGLEDAQNRLAIKQLIKEIGKPRNYGLTDEEKAEEEEKAAEERL
 AKEAAQTAELEHKEAMEMAEKIARWEEWNKRLEEVKREERELLEVSQVPLRNYLMTYVMP TLMQGLNECC
 KVRPEDPVDFLAEYLFKNNPEMQ

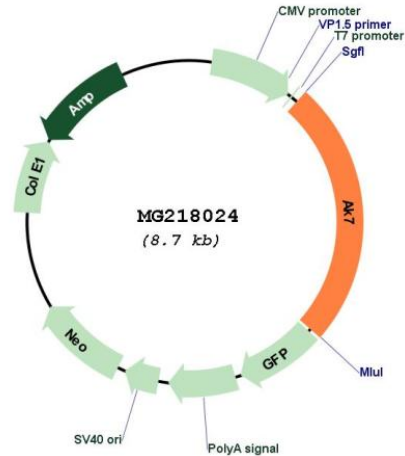
TRTRPLE - GFP Tag - V

Restriction Sites: SgfI-MluI

Cloning Scheme:

Cloning sites used for ORF Shutting:



Plasmid Map:


ACCN: NM_030187

ORF Size: 2169 bp

OTI Disclaimer: The molecular sequence of this clone aligns with the gene accession number as a point of reference only. However, individual transcript sequences of the same gene can differ through naturally occurring variations (e.g. polymorphisms), each with its own valid existence. This clone is substantially in agreement with the reference, but a complete review of all prevailing variants is recommended prior to use. [More info](#)

OTI Annotation: This clone was engineered to express the complete ORF with an expression tag. Expression varies depending on the nature of the gene.

Components: The ORF clone is ion-exchange column purified and shipped in a 2D barcoded Matrix tube containing 10ug of transfection-ready, dried plasmid DNA (reconstitute with 100 ul of water).

Reconstitution Method:

1. Centrifuge at 5,000xg for 5min.
2. Carefully open the tube and add 100ul of sterile water to dissolve the DNA.
3. Close the tube and incubate for 10 minutes at room temperature.
4. Briefly vortex the tube and then do a quick spin (less than 5000xg) to concentrate the liquid at the bottom.
5. Store the suspended plasmid at -20°C. The DNA is stable for at least one year from date of shipping when stored at -20°C.

RefSeq: [NM_030187.1](#), [NP_084463.1](#)

RefSeq Size: 3093 bp

RefSeq ORF: 2172 bp

Locus ID: 78801

UniProt ID: [Q9D2H2](#)

Cytogenetics: 12 E

Gene Summary: Nucleoside monophosphate (NMP) kinase that catalyzes the reversible transfer of the terminal phosphate group between nucleoside triphosphates and monophosphates. Has highest activity toward AMP, and weaker activity toward dAMP, CMP and dCMP. Also displays broad nucleoside diphosphate kinase activity. Involved in maintaining ciliary structure and function.[UniProtKB/Swiss-Prot Function]