

Product datasheet for **MG218013**

Arap1 (NM_001040112) Mouse Tagged ORF Clone

Product data:

Product Type: Expression Plasmids
Product Name: Arap1 (NM_001040112) Mouse Tagged ORF Clone
Tag: TurboGFP
Symbol: Arap1
Synonyms: 2410002L19Rik; Centd2; mKIAA0782
Mammalian Cell Selection: Neomycin
Vector: pCMV6-AC-GFP (PS100010)
E. coli Selection: Ampicillin (100 ug/mL)
ORF Nucleotide Sequence: >MG218013 representing NM_001040112
Red=Cloning site Blue=ORF Green=Tags(s)

TTTTGTAATACGACTCACTATAGGGCGGCCGGAATTCGTCGACTGGATCCGGTACCGAGGAGATCTGCC
 GCCCGATCGCC

ATGGCAGAGGGTTACGATGCCGCACTGTCTGTAGCTGAGTGGCTGCGGGCACTTCACCTGGAGCAGTACA
 CGGCACCTTTGAGCAGCACGGACTGGTGTGGGCCACCGAGTGCCAAGGCCTCAGCGATGCTGGCCTGCT
 GGACATGGGCATGCACCTCCCCGGCCACCGCCCGCATCCTGGTGGTCTTCACCGCGCCCATGCACCC
 CCGGTCCCTCGCTCGCCCCGCCACGGCCCGTCCGATGAAGCGACACATCTCCGTTCCACCACCTG
 TGCCCGTCACTCCACCAGAGCCGCCGCCACAGCTGGAGAGGATGAGGGTCTGCCTGCCGCTCCACCTAT
 CCCACCCCGAGGAGCTGCCTCCACCTGCCTGCTTCACTCCGACATCCACAGCCGCCCCAGATCCTGTG
 CTGCCCCACTGCCTGCCAAGAGACACTTGGTAGAATCCAGCGTTCTCCTGTCCCTCCTCGAACCGGAC
 CCCCTACCCACAGGCCAGCCTTCTTGCTAAGGAGGAGTTACTGTGCCATCAGTGTACCCCGGTCCCA
 ACCAGAGCCTGCAGAGACTCCGTCCACCCTCCTGCCTGCCTTTCCCAGGGGCCCTGCAGCCTCCGTCT
 CCTCCTCCCTGTCTCCTGTGATCCCTCCCAAGCCTCCTGCCTGCTCCCTGAGTTTGACGACTCTGACT
 ATGATGATGTCCCGGAGGAGGGGCCAGGGGCCACGCCAGTGTGATGACCAAGGAGGAGCCCTGCCGAG
 CCGAGTCCCACGGGCTGTGCGTGTGGCTAGTCTGCTGAGCGAGGGGAGGAGCTGTCTGGGGATGATGCG
 GAAGATGACGATGACCATGCCTATGAGGGTATCCCCAATGGTGGGTGGCCAACGAGTGGCCTGAATCCAC
 CCTTACGCAGCCTGATCCCTGATCTCCCACTGCACCCCATGGATGAGTTGCCTGGGGTCCCACCCCAT
 CACACCTGTCATCAAGGCTGGCTGGCTGGACAAGAACCACACAGGGTCTTATATCTATCAGAAGCGA
 TGGGTGAGACTGGACGCTGATTACCTGCGATACTTTGACAGTAACAAGGACGCCTACTCTAAGCGTTTTG
 TTCCTGTGGCCTGCATCTGCCGAGTAGCTCCTATTGGAGACCAGAAGTTTGAAGTATCACAATAATCG
 GACCTTCGCCCTCCGGGCAGAGAGTGTGTTGGAGCGGAACGAGTGGATGCAGGCCCTGCAGCAGGCAGTA
 GTTGAGCATCGAGCCGTTTTCCGCTTTCTAGTCTTCTGTGTTGGGAGTCCGAGGCTCCGAGCAGCCTG
 ACCGTGCTGGCAGCCTGGAGCTACGAGGCTTCAAGAATAAGCTTTACGTGGCTGTGACTGGGACAAAGT
 ACAGCTCTATAAGAATCTGGAGGAATTCATCTGGGCATTGGTATCACCTTTATCGACATGAATGTGGC



[View online >](#)

AATGTCAAGGAAGTGGATCGGCGCAGCTTTGACCTCACTACCCCTACCGCATCTTCAGCTTCTCGGCTG
ATTCAGAGTTAGAGAAGGAACAGTGGCTGGAGGCCATGCAGGGAGCCATCGCAGAGGCCCTATCTACCTC
AGAGGTGGCTGAGCGCATCTGGGCCGACGCCCCAACAGGTTCTGTGCCGACTGTGGGGCCGCCAGCCT
GACTGGGCCTCCATCAACCTCTGCGTTGTATCTGCAAGCGCTGTGCAGGGGAGCACCGCGGCTGGGTG
CAGGAGTGTCCAAGGTGCGGAGTTTGAAGATGGACAGGAAGGTGTGGACAGAAGCACTATCCAGCTCTT
CTTACATCTGGGCAATGGCCCCGGGAACCACTTCTGGGCTGCTAATGTGCCTCCTAGTGAGGCCCTGGAG
CCCAGCAGCAGCCCTGGTGCCCGCGGTATCACCTGGAGGCCAAGTACAGAGAGGGCAAGTACCGCCGCT
ACCATCCGCTCTTTGGCAACCAAGAGGAACTGGACAAGGCCCTGTGTGCTGCAGTTACTACCACTGACCT
GGCTGAGACCCAGGCACTCCTGGGCTGTGGGGCTGGGGTCACTGCTTCTCAGGGGACCCAGCAGCTCCC
ACACCCCTGGCTCTTGCTGAGCAGGCCGGACAGACTCTGCAGATGGAGTTTCTACGGAATAATCAGAGTA
CAGAGGTCCCTCGTTGGACTCAGTGAAGCCCTTGGAAAAGCACTACTCCGTTACCCTGCCAACTGTGAG
CCACAGCGGCTTCTGTACAAAAGTCTTCTGCCGGCAAACCTCTGCAGGACCGCCGTGCCCGGGAAGAG
TTCAGCCGGCGTGGTGTCTGAGTGTGGGCTCTGAGCTACTATGAAAACGAACGGGCAGTGACAC
CCAATGGGGAGATTCCGGCCAGCGAGATAGTATGCCTAGCAGTTTCCCCTCTGGACACCCATGGCTTTGA
GCACACCTTTGAGGTGTACACAGAGGGAGAACGGCTGTACCTGTTTGGGCTGGAGAATGCAGAGCTGGCT
CATGAGTGGGTCAAGTGCATTGCCAAGGCGTTCGTGCCTCCCCTGGCTGAGGACCTGCTAGCCCGGACT
TTGAACGTCTTGGGCGCCTACCCTGTAAGCTGGCCTGAGCCTTCAAGCAGCTCAGGAAGGCTGGTTTGC
CTTGACTGGCTCTGAGCTCCGGGCTGTCTTCCCAGAGGGGCCCTGGGAAGAGCCGCTGCAGCTCCGAAA
CTGCAAGAGCTTTCTATCCAAGGAGACAGCGAGAACCAAGTGTGGTGGTGGAGCGGAGGAGGACAC
TGTACATCCAGGGTGAAGCGGCGCTGGACTTCAATGGCTTGGTGGTGGTGGTGGTGGTGGTGGTGGTGG
GACTACATCACGCAGTGTGGCTTGAACCTCAGAGGGTATCTATCGAAAGTGTGGTGGTGGTGGTGGTGG
AGACTGTAGACAGCCTCCGGCAGGACGCAGCTCTGTGCACCTAAAGGAGGGAGAACAGCAGCTGGA
CGACGTCTCCTCTGCACTCAAACGCTTCCCTCAGGGACCTGCCCGATGGGCTCTTACGCGTGCGCAGCGC
CTGGCCTGGCTGGAGGCCTCTGAGATCGAGGATGAGGAAGAAAAGATCTCCAGGTATCGAGAGCTTTGG
TGCATCTGCCCTGTCAACCGGCCACTGTGAAGGCCCTTATCAGCCATCTGACTGTGTACAGTGTCTT
CTCAGACACAAACCAATGAACACACACAACCTGGCTATCGTGTTTGGGCTTACTCTTCCAGACAGAC
GGGCAGGACTACAAGGCCGGCAAGGTGGTGGAAAGACCTCATCAACCACTACGTGGTGGTGGTGGTGGTGG
ACGAGGAGGAGCTGAGGAAGCAGAGGGAGGAAGTACGGCCATCGTGAAGATGCGAGTGGCTGGCACTGC
CAGTGGGACCCAGCATGTGGCGACTTCATCTGCACAGTCTACCTGGAGGAGAAGAAGGTGGAGACTGAA
CAGCATGTTAAGATCCCAGCATCCATGACTGCAGAGGAGCTTACTCTGGAGATTCTGGACCGCCGAATG
TGAGCATCAGGGAGAAGGACTACTGGACTTGTCTTGGAGTCAACGAGAAGGAGGAGGAGGAGGAGGAGGAG
GCACTTTGCAGAGAAGGTGCTGCCATTGTCCATGGGCTGGGCATAGACAGCCATCTGGTGGTGAAGAAG
TACCAGTCCATGGAGGCCATGCTGTGACTTGGCCAGCCGTGTGGGTGACACCAAGCATGGTATGATGA
AGTTCCGTGAAGACCGCAGCCTCCTGGGCTTGGGGCTACCTTCCGGTGGCTTCCACGATCGCTACTTCAT
TCTCAACAGCAGCTGCCTACGGCTCTACAAGGAGGTCCGGAGTCAACGGCCCTGAGAAGGAGTGGCCTGTC
AAGAGCCTCAAAGTCTACCTGGGTGTAAGAAGAAACTGCGGCCACTACTTGTGGGGCTTACCGGTGG
TGCACGAGACAGAAAAGCAGAGAAGCAGCAGTGGTACCTCTGCTGTGACACGCAGATGGAACCTCGAGA
GTGGTTTGGCACCTTCTCTCTGTGCAGCACGATGGCCTGGTGTGGCCCTCCGAGCCATCTCGAGTGTCC
CGGGCAGTGCCTGAGGTCCGGATGGGCAGTGTATCGCTGATCCCTCTACGAGGCAGTGAAAATGAAATGC
GCCGGAGTGTGGCAGCCTTCACTGCTGACCCCTTCCCTTCTCCGCCATGTC

AGCGGACCGACGCGTACGCGGCCGCTCGAG - GFP Tag - GTTTAA

Protein Sequence: >MG218013 representing NM_001040112
 Red=Cloning site Green=Tags(s)

MAEGYDAALSVAEWLRALHLEQYALFEQHGLVWATECQGLSDAGLLDMGMHLPGHRRRILAGLHRAHAP
 PVPLPRPAPRPVPMKRHIFRSPVPVTPPEPPPTAGEDEGLPAAPPIPRRSCLPPACFTPTSTAAPDPV
 LPPLPAKRHLVSSVPPVPPRTGPPYPQASLLAKEELLPSVSPRSQPEPAETPSTLLPAFPQGPLQPPS
 PPPCPPVIPPCKPRLLEPFDDSDYDDVPEEGGAPASVMTKEEPLSRVPRAVRVASLLSEGEELSGDDA
 EDDDDHAYEGIPNGGWPTSGLNPPLRSLIPDLPLHPMDELPGGTPITPVIKAGWLDKNPPQGSYIYQKR
 WVRLDADYLRYFDSNKDAYSKRFVPVACICRVAPIGDQKFEVITNNRTFAFRAESDVERNEWMQALQQAV
 VEHRARFRLSSASVLGVRGSEQPDRAGSLELRGFKNKLYVAVTGDKVQLYKNLEEFHLGIGITFIDMNVG
 NYKEVDRRSFDLTPYRIFSFADSELEKEQWLEAMQGAIAEALSTSEVAERIWAAPNRFACDCAAQP
 DWASINLCVVICKRCAGEHRGLGAGVSKVRSKMDRQVWTEALIQFLHLGNGPGNHFWAANVPPSEALE
 PSSSPGARRYHLEAKYREGKYRRYHPLFGNQEELDKALCAAVTTDLAETQALLGCGAGVSCFSGDPAAP
 TPLALAEQAGQTLQMEFLRNNQSTEVPRLDSVKPLEKHYSVTLPTVSHSGFLYKTASAGKPLQDRRAREE
 FSRRWCVLSDGVLSSYENERAVTPNGEIRASEIVCLAVSPLDTHGFEHTFEVYTEGERLYLFGLENAELA
 HEWVKCIAKAFVPLAEDLLARDFERLGRLPCKAGLSLQQAQEGWFALTGSELRAVFPPEGWEEPLQLRK
 LQELSIQGDSENQVLVVERRRTLYIQGERRLDFMAWLGVIQKAAASLGDTLSEQQLGSDIPVIYRVCY
 DYITQCGLTSEGIYRKCQGTSTKQRLDLSLRQDARSVHLKEGEQHVDDVSSALKRFLRDLDPGLFTRAQR
 LAWLEASEIEDEEEKISRYRELLVHLPPVNRAIVKALISHLYCVQCFSDTNQMNTHNLAIVFGPTLFQTD
 GQDYKAGKVVEDLINHYVVVSVDEEELRKQREEVTAIVKMRVAGTASGTQHAGDFICTVYLEEKKVETE
 QHVKIPASMTAEELTLEILDRRNVSIREKDYWTCFEVNEKEEAERPLHFAEKVLPVHGLGIDSHLVVKK
 YQSMEAMLLYLASRVGDTKHGMMKFREDRSLGLGLPSGGFHDRYFILNSSCLRLYKEVRSRHEKEWPV
 KSLKVYLGVKKLRPPTCWGFTVVHETEKHEKQWYLCDDTQMELEWFAFLLSVQHDGLVWPSEPSRVS
 RAVPEVRMGSVSLIPLRGENEMRRSVAaftADPLSLLRHV

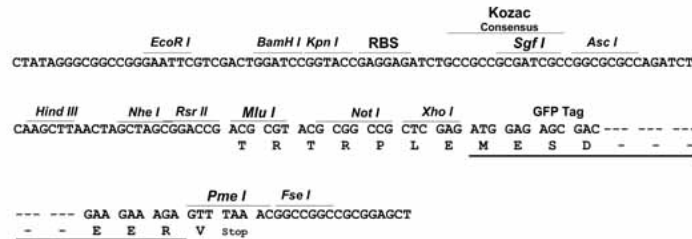
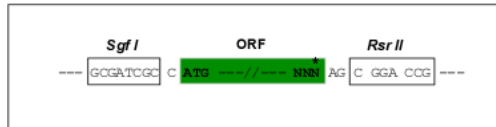
SGPTRRRLE - GFP Tag - V

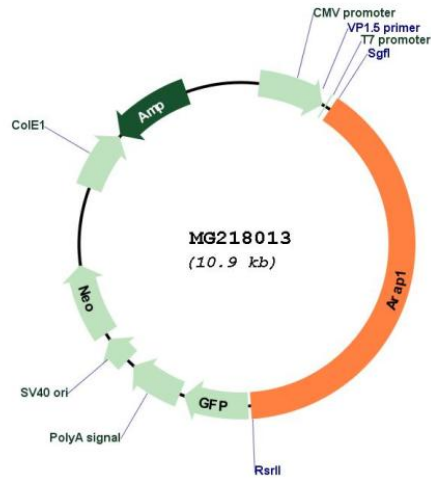
Restriction Sites:

SgfI-RsrII

Cloning Scheme:

Cloning sites used for ORF Shutting:



Plasmid Map:


ACCN: NM_001040112

ORF Size: 3579 bp

OTI Disclaimer: The molecular sequence of this clone aligns with the gene accession number as a point of reference only. However, individual transcript sequences of the same gene can differ through naturally occurring variations (e.g. polymorphisms), each with its own valid existence. This clone is substantially in agreement with the reference, but a complete review of all prevailing variants is recommended prior to use. [More info](#)

OTI Annotation: This clone was engineered to express the complete ORF with an expression tag. Expression varies depending on the nature of the gene.

Components: The ORF clone is ion-exchange column purified and shipped in a 2D barcoded Matrix tube containing 10ug of transfection-ready, dried plasmid DNA (reconstitute with 100 ul of water).

Reconstitution Method:

1. Centrifuge at 5,000xg for 5min.
2. Carefully open the tube and add 100ul of sterile water to dissolve the DNA.
3. Close the tube and incubate for 10 minutes at room temperature.
4. Briefly vortex the tube and then do a quick spin (less than 5000xg) to concentrate the liquid at the bottom.
5. Store the suspended plasmid at -20°C. The DNA is stable for at least one year from date of shipping when stored at -20°C.

RefSeq: [NM_001040112.1](#), [NP_001035201.1](#)

RefSeq Size: 5314 bp

RefSeq ORF: 3582 bp

Locus ID: 69710

UniProt ID: [Q4LDD4](#)

Cytogenetics: 7 E2

Gene Summary: Phosphatidylinositol 3,4,5-trisphosphate-dependent GTPase-activating protein that modulates actin cytoskeleton remodeling by regulating ARF and RHO family members. Is activated by phosphatidylinositol 3,4,5-trisphosphate (PtdIns(3,4,5)P3) binding. Can be activated by phosphatidylinositol 3,4-bisphosphate (PtdIns(3,4,5)P2) binding, albeit with lower efficiency. Has a preference for ARF1 and ARF5 (By similarity).[UniProtKB/Swiss-Prot Function]