

Product datasheet for **MG218001**

Pgm3 (NM_028352) Mouse Tagged ORF Clone

Product data:

Product Type:	Expression Plasmids
Product Name:	Pgm3 (NM_028352) Mouse Tagged ORF Clone
Tag:	TurboGFP
Symbol:	Pgm3
Synonyms:	2810473H05Rik; Agm1; BB187688; C77933; PAGM; Pgm-3
Mammalian Cell Selection:	Neomycin
Vector:	pCMV6-AC-GFP (PS100010)
E. coli Selection:	Ampicillin (100 ug/mL)



[View online »](#)

ORF Nucleotide Sequence:

>MG218001 representing NM_028352
 Red=Cloning site Blue=ORF Green=Tags(s)

TTTTGTAATACGACTCACTATAGGGCGGCCGGGAATTCGTCGACTGGATCCGGTACCGAGGAGATCTGCC
 GCC**CGCATCGCC**

ATGGATCTGGAGGCTGTGTGTAAGCGCTCGGCACTCCATGCCAAGCCCCAGGGGCTCATTCTTCAGTATG
 GGACTGCTGGATTTCGGACCAATGCCAGCATCTCGATCATATCATGTTTCGAATGGGATTGCTAGCTGT
 CCTGCGGTCAAAGCAAACAAGATCTACCATTGGAGTCATGGTTACGCGCTCACATAACCCCTGAGGAAGAC
 AATGGTGTGAAATTGGTTGATCCTTTGGGGGAAATGTTGGCCCTTCCTGGGAGGAGCATGCCACCTGTC
 TGGCCAGTGCGGAGGAGCAGGACGTGCGCAAGTCTTGTGCCATCGTGGAGAAAGAAGCTGTGGATCT
 GACACAGACCGCCTTCGTAGTCATTGCCAGAGACACCAGGCCAGCAGTGAGAACTTTCACAATCTGTG
 ATAGATGGCGTGACTGTTTTAGGAGTCAATCCATGATTACGGCCTGTTGACGACACCTCAGTTGCACT
 ACATGGTGTATTGCCGAATCCGGAGGCCGGTATGGACAGGCCACCGTAGAAGGCTACTGCCAGAAGCT
 CTCCAAGCTTTCTAGACCTTACGAATCAGGTTTCTGCAGTGGAGATGTAAGAGGTCAGTTAAGGTT
 GACTGTGCCAACGGCATAGGGCCCTTGAAGCTAAGAGAAATGGAACACTACTTCTCCCGGGCCTGTCCG
 TTCTGCTGTTAATGATGGGACCAAGGGCGGCTCAATCACCTGTGCGGTGCTGACTTTGTGAAAAGTCA
 ACAGAAACCCCCACAGGAATTGAAATGAAGTCCGGTGAGAGATGCTGCTCCTTCGATGGGGATGCGGAC
 AGGATCGTGTATTACTACTGTGATGCAGATGGTCACTTTCATCTCATAGATGGAGACAAGATAGCGACGT
 TAATTAGCAGTTTCCTTAAAGAGCTACTGTTGGAGATTGGAGAAAGTGTGAACCTCGGAGTCGTACAGAC
 AGCATATGCAAAATGGAAGTTCACGCGGTACCTTGAAGAAGTTATGAAGGTACCTGTGTATTGCACAAA
 ACTGGTGTAAACATTTGCATCACAAGGCTCAAGAGTTTGACATCGGAGTTTATTTTGAAGCGAACGGGC
 ATGGAACAGCACTGTTTCAGTGAAGCAGTTGAAGTGAAGATAAAAAGACTAGCCCAAGAAGTACAGCATGG
 AAAAGGAAAAGCAGCCAGGACGCTTGCAGCATCATCGACTTATCAACAGGACGCTGGAGATGCTATT
 TCTGACATGTTGGTGATTGAGGCTATCCTGGCTCTGAAGGGGCTGACTGTACAGCAGTGGGATGCTATTT
 ATGTCGATCTTCTAACAGACAACCTCAAAGTAAAGTTCGCGGACAGGAGATTATTAGCACCACGGATGC
 TGAGAGACAAGCAGTCACTCCACCAGGACTCCAAGAGGCAATCAATGACCTGGTGAAGAAAATACACACTT
 GCCCGAGCTTTTGTACGGCCCTCTGGTACTGAAGACATTGTCCGAGTATATGCAGAAGCCAACCTCACAAG
 AAAGCGCAGACAGGCTTGCTATGAAGTGAAGTTGCTGGTGTCCAGCTGGCTGGAGGCATTGGAGAAAG
 ACCACAACCAACTTTC

ACGCGTACGCGGCCGCTCGAG - GFP Tag - GTTTAA

Protein Sequence:

>MG218001 representing NM_028352
 Red=Cloning site Green=Tags(s)

MDLEAVCKRSALHAKPQGLILQYGTAGFRNTAQHLDHIMFRMGLLAVLRSKQTRSTIGVMVTASHNPEED
 NGVKLVDPGLGEMLAPSWEEHATCLASAEEQDVRQVLA AIVEKEAVDLTQTAFVVIARDTRPSSEKLSQSV
 IDGVTVLGGQFHQYGLLTPQLHYMVYCRNSGGRYGQATVEGYCQKLSKAFVDL TNQVSCSGDVKRSVKV
 DCANGIGALKLREMEHYFSRGLSVLLFNDGTQGRNLHLCGADFVKSSQKPPQGIEMKSGERCCSFDGDAD
 RIVYYYCDADGHFHLIDGDKIATLISSFLKELLEIGESVNLGVVQTAYANGSSTRYLEEVMKVPVYCTK
 TGVKHLHHKAQEFDIGVYFEANGHTALFSEAVEVKIKRLAQELDDGKGAARTLASIIDLFNQAAGDAI
 SDMLVIEAILALKGLTVQQWDAIYVDLPNRQLKVKVADRRVISTDAERQAVTPPGLQEAINDLVKKYTL
 ARAFVRPSGTEDIVRVYAEANSQESADRLAYEVSLLVFQLAGGIGERPQPTF

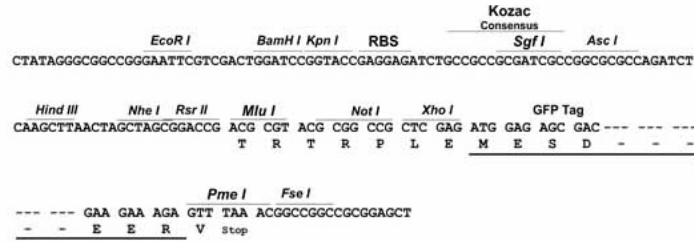
TRTRPLE - GFP Tag - V

Restriction Sites:

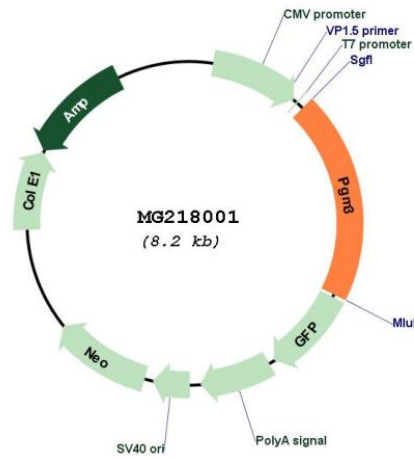
Sgfl-MluI

Cloning Scheme:

Cloning sites used for ORF Shutting:



Plasmid Map:



ACCN:	NM_028352
ORF Size:	1626 bp
OTI Disclaimer:	The molecular sequence of this clone aligns with the gene accession number as a point of reference only. However, individual transcript sequences of the same gene can differ through naturally occurring variations (e.g. polymorphisms), each with its own valid existence. This clone is substantially in agreement with the reference, but a complete review of all prevailing variants is recommended prior to use. More info
OTI Annotation:	This clone was engineered to express the complete ORF with an expression tag. Expression varies depending on the nature of the gene.
Components:	The ORF clone is ion-exchange column purified and shipped in a 2D barcoded Matrix tube containing 10ug of transfection-ready, dried plasmid DNA (reconstitute with 100 ul of water).
Reconstitution Method:	<ol style="list-style-type: none">1. Centrifuge at 5,000xg for 5min.2. Carefully open the tube and add 100ul of sterile water to dissolve the DNA.3. Close the tube and incubate for 10 minutes at room temperature.4. Briefly vortex the tube and then do a quick spin (less than 5000xg) to concentrate the liquid at the bottom.5. Store the suspended plasmid at -20°C. The DNA is stable for at least one year from date of shipping when stored at -20°C.
RefSeq:	NM_028352.4 , NP_082628.3
RefSeq Size:	4582 bp
RefSeq ORF:	1629 bp
Locus ID:	109785
UniProt ID:	Q9CYR6
Cytogenetics:	9 46.58 cM
Gene Summary:	Catalyzes the conversion of GlcNAc-6-P into GlcNAc-1-P during the synthesis of uridine diphosphate/UDP-GlcNAc, a sugar nucleotide critical to multiple glycosylation pathways including protein N- and O-glycosylation.[UniProtKB/Swiss-Prot Function]