

Product datasheet for **MG217985**

Eloa (NM_013736) Mouse Tagged ORF Clone

Product data:

Product Type:	Expression Plasmids
Product Name:	Eloa (NM_013736) Mouse Tagged ORF Clone
Tag:	TurboGFP
Symbol:	Eloa
Synonyms:	110kDa; AA408125; Tceb3; Tceb3a
Mammalian Cell Selection:	Neomycin
Vector:	pCMV6-AC-GFP (PS100010)
E. coli Selection:	Ampicillin (100 ug/mL)



[View online »](#)

ORF Nucleotide Sequence:

>MG217985 representing NM_013736
 Red=Cloning site Blue=ORF Green=Tags(s)

TTTTGTAATACGACTCACTATAGGGCGGCCGGGAATTCGTCGACTGGATCCGGTACCGAGGAGATCTGCC
 GCC**CGGATCGCC**

ATGGCGCGGAGTCGGCGCTCCAAGTTGTGGAGAAGTCCAGGCGCGCTGGCTGCGAACCCGGACCCCA
 AGAAGCTATTGAAATATTTGAAGAACTTTCCATCTTACCTATCACAGTAGACATTCTTGTGGAGACTGG
 GGTAGGGAAAACAGTGAACAGCTTTTCGGAAGCATGAGCAAGTAGGAACTTTGCCAGAGACCTGGTGGCC
 CAGTGGAGAAGCTGTTCCAGTAGAGCGAAATAGTGAGGCCGAGGATCAGGATTTTGAAGAACAATT
 CCCGTAAGCGTCCAGAGATGCTCTCAGAGGGAGGAGTGGAGGGGAACTACCAGGAAAGCTGGAA
 ACCCTCTGGTAGCCGGTCTACAGCCCTGAGCACAGACAGAAAAACACAAAAACTTTCTGAGCCTGAA
 AGGCCTCACAAGTGGCTCACAGTCACGAGAAGAGAGATGAAAGGAAGAGGTGTCAAAGTGTACCAC
 CATATTCTCAGACCCCGAGTCATCTGACTATGGCCATGTTCAATCCCCTCCACCTTCAAGTCTCATCA
 AATGTATACAGACCTCTCCAGGTCCCAGAGGAGGACCAGGAGCCCATCATCTCACACCAGAAGCCAGGA
 AAAGTCCACAGTAATACCTTTCCAGGACAGACTAGGGGTTAGTCACCTGGGTGAACAAGGAAAAGGGGCTG
 TTAGCCACCACAAGCAGCACAGATCTTACACAAGGAGAAGCACCTGCAGATGCCAGAGAGGATGAGAA
 GATCTCTGCTGTGAGCAGAGAGAAGTCACACAAAGCCTCTTCAAAGAGGAAAGCCGAAGACTACTGTCA
 GGGGACAGTGCCAAGGAGAAGCTGCCCTAGTGTGTTAAGAAAAGCAAGGACAGAGAAGGCAGCAGTC
 TCAAGAAGAAGTTTTACCTGCCTTAGATGTTGCTTCAGACAACCACTTTAAAAAGCCAAACACAAGGA
 CTCCGAGAAAGCCAAATCTGACAAAAACAAGCAGAGTGTAGATGGCGTGGACTCAGGACGAGGGACAGGA
 GACCCATTGCCAAAGCCAAGGAGAAAGTCCCAACCCTGAAGGCTCAGGAGGGGAAAGTAAGAACTA
 AGCAGATGGAAAGTCAGCAGGCTGCTCCACCCTAAAGCGGAGGAGACAGATGTGACGATGAGTTTGA
 GGGGCCACGATGTCCTTCGAGTCTACCTCAGCTATGACCAGCCCCGGAAGAAAAAGAAGGTTGTG
 AAAACGTCAGTACAGCACTTGGAGAAAAAGGACTTAAAAAAAAGGACTCTAAAAGCACTAGTAAAAACT
 TGAACCTCAGTCAGAAATTGCCAAAGTCAACGAAAAAGTCAAGAGAAGTTGCAGCCAGCTGGAGCCGA
 ACCCACCAGGCCAGAAAGGTCCCTACTGATGTGCTGCCAGCATTGCCAGACATCCCCTTACCTGCCATT
 CATGCCAACTACCGGCCCTTCCCTTCCCTTGGATTGATCCCTCCTTTCAGCCAAAGCGAAAAGCTTTCT
 CTTACCCCGAGGAAGAAGAAGCTGGGTTACAGGACGAGAATGAATTCTAAGATGCAGGTGTATTC
 TGGTTCCAAGTGTGCTATCTCCCAAAATGATGACATTGCACCAGCAGTGTATCCGGGTGCTTAAAGAT
 AATATTGACTCTATCTTTGAAGTAGGAGGAGTCCCTATTCTGTTCTTGAACCTGTCTTGGAGAGGTGCA
 CACCTGATCAGCTCTACCGGATAGAGGAATGCAATCATGTATTAATTGAAGAAACAGATCAGTTGTGGAA
 AGTTCACTGTACCGAGACTTTAAGGAAGAAAGGCCAGAAGATGAGTCTGGAGGGAGATGTACCTG
 AGGCTTCAGGACGCCAGAGAGCAGCGGCTGCGCCTGCTCAAAACAACATCCGCTCTGCTCATGCCAATA
 AGCCAAAGGGACGACAAGCAAAGATGGCTTTTGTCAACTCTGTGGCCAAGCCACCAAGAGATGTCCGAA
 AAGGCAGGAGAAGTTTGAACCGGGGGAGCAGCTGTTCTGAGAAAGTCAAGGATAAAGCCAGCGCCATAT
 ACAACAGGAAGCAGCCATGTTCTGCCAGCAACAGCAGCAGCACTTCCACTCCAGTCTGAGGAGCTGG
 CCTATGATGGGCCAGTACTAGCAGTCCCCTTAGCTCCTGTGGCCAGCAGTCTGTTTCTATGATCC
 CAGGAAACCAGCTGTGAAGAAAATTGCTCCGATGATGGCCAAGACCATTAAGCATTCAAGAACAGATTC
 TCCCGGCCA

ACGCGTACGCGGCCGCTCGAG - GFP Tag - GTTTAA

Protein Sequence: >MG217985 representing NM_013736
 Red=Cloning site Green=Tags(s)

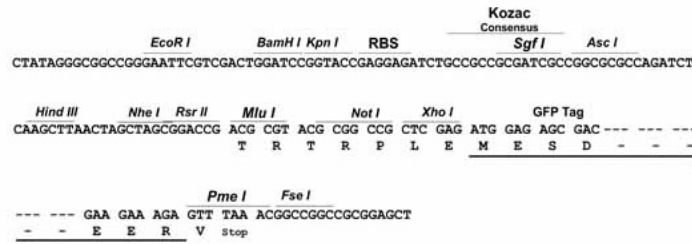
MAAESALQVVEKLQARLAANPDPKLLKYLKLSILPITVDILVETGVGKTVNSFRKHEQVGNFARDLVA
 QWKKLVPVERNSEAEDQDFEKNNSRKRPRDALQREEELEGNYQESWKPSPGSRSSYSPEHRQKHKHKLSEPE
 RPHKVAHSHEKRDERKRCHKVSPPYSSDPESDYGHVQSPPPSSPHQMYTDLRSPEEDQEPIISHQKPG
 KVHSNTFQDRLGVSHLGEQKGAIVSHHKQHRSSHKEKHPADAREDEKISAVSREKSHKASSKEESRRLLS
 GDSAKEKLPSSVVKKDKDREGSSLKFKFSPALDVASDNHFKKPKHKDSEKAKSDKNKQSVGVDGSRGTG
 DPLPKAKEKVPNHLKAQEKGVRTNADGKSAGLLHPKAEETDVDDEFERPTMSFESYLSYDQPRKKKKKVV
 KTSSTALGEKGLKKKDSKSTSKNLNSAQKLPKVNENKSEKLPAGAEPTRPKVPTDVLPAIPDIPLPAI
 HANYRPLSLELIPSFQPKRKAFFSSPQEEEEAGFTGRRMNSKMVYSGSKCAYLPKMMTLHQQCIRVLKN
 NIDSIFEVGGVPYSVLEPVLERCPTDQLYRIEECNHVLIEETDQLWKVHCHRDFKEERPEEYESWREMYL
 RLQDAREQLRLLTNNIRSAHANKPKGRQAKMAFVNSVAKPPRDVRRRQEKFGTGGAAVPEKVKRIKAPY
 TTGSSHPASNSSNFHSSPEELAYDGPSTSSAHLAPVASSSVSYDPRKPAVKKIAPMMAKTIKAFKNRF
 SRR

TRTRPLE - GFP Tag - V

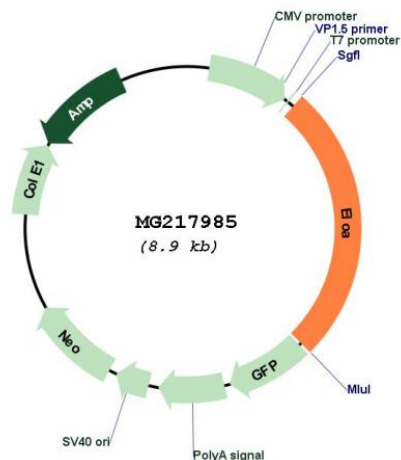
Restriction Sites: SgfI-MluI

Cloning Scheme:

Cloning sites used for ORF Shuttling:



Plasmid Map:



ACCN: NM_013736

ORF Size: 2319 bp

OTI Disclaimer: The molecular sequence of this clone aligns with the gene accession number as a point of reference only. However, individual transcript sequences of the same gene can differ through naturally occurring variations (e.g. polymorphisms), each with its own valid existence. This clone is substantially in agreement with the reference, but a complete review of all prevailing variants is recommended prior to use. [More info](#)

OTI Annotation: This clone was engineered to express the complete ORF with an expression tag. Expression varies depending on the nature of the gene.

Components: The ORF clone is ion-exchange column purified and shipped in a 2D barcoded Matrix tube containing 10ug of transfection-ready, dried plasmid DNA (reconstitute with 100 ul of water).

Reconstitution Method:

1. Centrifuge at 5,000xg for 5min.
2. Carefully open the tube and add 100ul of sterile water to dissolve the DNA.
3. Close the tube and incubate for 10 minutes at room temperature.
4. Briefly vortex the tube and then do a quick spin (less than 5000xg) to concentrate the liquid at the bottom.
5. Store the suspended plasmid at -20°C. The DNA is stable for at least one year from date of shipping when stored at -20°C.

RefSeq: [NM_013736.4](#), [NP_038764.2](#)

RefSeq Size: 4592 bp

RefSeq ORF: 2322 bp

Locus ID: 27224

UniProt ID: [Q8CB77](#)

Cytogenetics: 4 D3

Gene Summary:

SIII, also known as elongin, is a general transcription elongation factor that increases the RNA polymerase II transcription elongation past template-encoded arresting sites. Subunit A is transcriptionally active and its transcription activity is strongly enhanced by binding to the dimeric complex of the SIII regulatory subunits B and C (elongin BC complex).
[UniProtKB/Swiss-Prot Function]