

Product datasheet for **MG217979**

Sytl1 (NM_031393) Mouse Tagged ORF Clone

Product data:

Product Type:	Expression Plasmids
Product Name:	Sytl1 (NM_031393) Mouse Tagged ORF Clone
Tag:	TurboGFP
Symbol:	Sytl1
Synonyms:	9030417L18; PSGL-1; Slp1
Mammalian Cell Selection:	Neomycin
Vector:	pCMV6-AC-GFP (PS100010)
E. coli Selection:	Ampicillin (100 ug/mL)



[View online »](#)

ORF Nucleotide Sequence:

>MG217979 representing NM_031393
 Red=Cloning site Blue=ORF Green=Tags(s)

TTTTGTAATACGACTCACTATAGGGCGGCCGGAATTCGTCGACTGGATCCGGTACCGAGGAGATCTGCC
 GCC**GCGATCGCC**

ATGCCCCAGAGAGGCCACCCATCTCAGGAGAGGCTTTGGCCCTGCCCTCCCTCCCCATGGCACATGGAC
 CAGGATCTGAAGCTGAGGGTTGCTGGACCTCAGCTTCTGACAGAGGAGAACAGGAGGCCATCTCTGA
 TGTCTCAAACGAGATGCCACCTGCGCCAGCTGGAGGAAGGGCGGTGACGAAGCTCCGGGCTCCCTG
 GAAGACCCTGGCAGCTGAAGATCTGACAGGGGACTGGTTCCAAGAAGCGGTTCCAGAGGCACCATC
 ACGCCATTTTGGTTCTGACCTCGTCCGGGCTTATCCGAAGGAAGAAGAGCCAAAGGGGACCAGGC
 TCTGGGGAGTGATGGTGAAGCAGAGGCTGCTGGGAAAACACCATTGAAGGAGAGCCGGAGTCCAGGGTC
 TCCATAGAGGTGGCAGCTCCAGAGAGAACTGAGACCCAAGGGCTGATTTGTTCTCACCATATGTAC
 CCTCAAAGGCTCCGAAGTCCAGGAGGAGAGCCAGGACCAGGAATGTGAGCTGGAGGCCCTGGCGA
 AGGGGTTGTGAGGTGGCAGAGGCGGACCCAGAGCTGGATCCTGAGCAGAAGGCGGAGCAGGAGTCCAG
 CCAACTCCAGCCAGTCCAAGGCGACCTCCAAGATCCTGGAGAATGGAGAAGAGGCCCGGGGCTCGGCC
 CCTCTCTTGACCCATGCTCAGCAGCAGCTCCTCTGTGTCCAGCCTCAATTCCTCTACGCTGAGCGGCAG
 CCTGATGAGCCTATCCGGGGAGGCAGAGGCAGGCACGGTGCAGGTGCGAGGCTCCGTGCTTCTCGCTG
 CGCTACGAGCCTGGCACCTCTGAGCTGCGAGTACAGGTGATCCAGTGCCAGGGCTGGCCGCTGCCGGC
 GACGCCGCTCCGATCCCTACGTGAAAAGCTACCTCCTCCCGGATAAGCAGAGCAAGCGTAAGACGTCAGT
 GAAGAACGGAATCTGAACCCGATCTTCAACGAGACTCTGCGGCACTCTGTCCAGCAGGCTGATCTCCCA
 GGCCGCGTGTGAGCCTGTCCGTGTGGCACCAGGAAAGTCTGGGTCGCAACATCTTCTGGGAGAAGTAG
 AAGTGGCCCTAGACACATGGAACCTGGACTCTGAGGCTACCTGGCTCCCTGCAGCCTCGGGTTCCTCC
 ATCTCCAGATGAGCTTCCAGCCGTGGACTGCTGTCTGTCCCTTAAGTATGTCCTGCCGCTCAGAG
 GGAGGAGGACAGCCTCAGAGTGGGGAGTTACACTTCTGGGTAAGGAAGCTCAGAGCCTGGTACCACTGC
 GACCAGGATCCCTGGACACTTACATTCAATGCTCAGTGTGCTGATGACAGTCCGGCCAGCCGCAACG
 CACAAGAGTGGTTCGAAGAAGTCTCAGCCCTGTGTTCAACCACACCATGGTTTATGACGGCTTCGGGCT
 GCTGACCTACGCCAGGCTGTGCCGAGCTCCTGTGGGACCATGGGGCCCTGGCCAGTCGCCAGCTGG
 GGGCACACGCCCTCAGCCTTGGTACAGGCAGCAGTTATGGGCTCAGGTGCCCTGGATGGATTCCACACC
 GGAGGAGAAGCAGCTGTGGCAGACACTCCTGGAGCGGCCCTGTGAGTGGTGGATGGCTTCTGCCCTC
 AGAACCAACTGGTCCCCAGGGCA

ACGCGTACGCGGCCGCTCGAG - GFP Tag - GTTTAA

Protein Sequence:

>MG217979 representing NM_031393
 Red=Cloning site Green=Tags(s)

MPQRGHPSQERLWALPSLPMHGPSEAEGLLDLSFLTEEEQEATSDVLKRDAHLRQLEEGRVSKLRASL
 EDPWQLKILTGDFWQEARSSQRHHHAHFGSDLVRASIRRKSPKGDQALGSDGEAEAGENTIEGEPESRV
 SIEVAAPERNTETQGPDLFSPYVPSKASEGQEEEPQDQECELEAPGEGGVQVAEADPELDPEQKAEQESQ
 PTPAQSKATSKILENGEEAPGLGPSLDRMLSSSSSVSSLNSSTLSGSLMSLSGEAEAGTVQVRGSLVFLS
 RYEPGTSELRVQVIQCQGLAAARRRRSDPYVKSyllPDKQSKRKTsvkkrnlNPIFNETLRHSVQQADLP
 GRVLSLsvwhreslGRNIFLGEVEVPLDTWNWDSEATWLPLQPRVPPSPDELPSRGLLSLKYVPAGSE
 GGGQPQSGELHFVWKEAQLVPLRPGSLDTYIQCsvLPDDSRASRQRTRVRRSLSPVFNHMTMYDGFPGP
 ADLRQACAELSLWDHGALASRQLGGTRLSLGTGSSYGLQVPWMDSTPEEKQLWQTLLERPCEWVDGLLPL
 RTNLVPRA

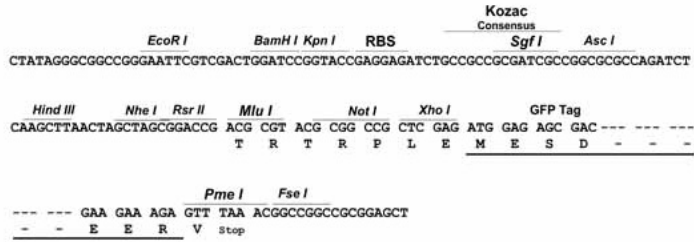
TRTRPLE - GFP Tag - V

Restriction Sites:

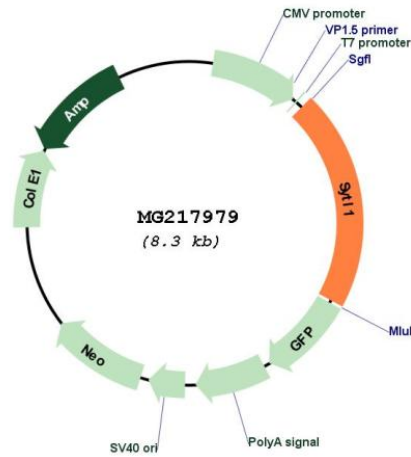
Sgfl-MluI

Cloning Scheme:

Cloning sites used for ORF Shutting:



Plasmid Map:



ACCN: NM_031393
 ORF Size: 1704 bp

OTI Disclaimer:	The molecular sequence of this clone aligns with the gene accession number as a point of reference only. However, individual transcript sequences of the same gene can differ through naturally occurring variations (e.g. polymorphisms), each with its own valid existence. This clone is substantially in agreement with the reference, but a complete review of all prevailing variants is recommended prior to use. More info
OTI Annotation:	This clone was engineered to express the complete ORF with an expression tag. Expression varies depending on the nature of the gene.
Components:	The ORF clone is ion-exchange column purified and shipped in a 2D barcoded Matrix tube containing 10ug of transfection-ready, dried plasmid DNA (reconstitute with 100 ul of water).
Reconstitution Method:	<ol style="list-style-type: none"> 1. Centrifuge at 5,000xg for 5min. 2. Carefully open the tube and add 100ul of sterile water to dissolve the DNA. 3. Close the tube and incubate for 10 minutes at room temperature. 4. Briefly vortex the tube and then do a quick spin (less than 5000xg) to concentrate the liquid at the bottom. 5. Store the suspended plasmid at -20°C. The DNA is stable for at least one year from date of shipping when stored at -20°C.
RefSeq:	NM_031393.2 , NP_113570.2
RefSeq Size:	1940 bp
RefSeq ORF:	1707 bp
Locus ID:	269589
Cytogenetics:	4 D2.3