

## Product datasheet for **MG217961**

### **Pign (NM\_013784) Mouse Tagged ORF Clone**

#### **Product data:**

Product Type:	Expression Plasmids
Product Name:	Pign (NM_013784) Mouse Tagged ORF Clone
Tag:	TurboGFP
Symbol:	Pign
Synonyms:	Gm20308; PIG-N
Mammalian Cell Selection:	Neomycin
Vector:	pCMV6-AC-GFP (PS100010)
E. coli Selection:	Ampicillin (100 ug/mL)



[View online »](#)

**ORF Nucleotide Sequence:**

>MG217961 representing NM\_013784  
 Red=Cloning site Blue=ORF Green=Tags(s)

TTTTGTAATACGACTCACTATAGGGCGGCCGGGAATTCGTGACTGGATCCGGTACCGAGGAGATCTGCC  
 GCC**CGCATCGCC**

ATGCTGCTGTTTTTGGCTTTGGGATTGCTTATCCATTTTGTGTTCTTCGCTTCCATCTTTGACATTTATT  
 TTACATCTCCTTTGGTTCATGGAATGACTCCCCAGTTTACACCTTTGCCTCCTCCAGCAAAAAGATTAGT  
 GCTATTTGTTGCTGATGGCCTGAGAGCAGATACTTTATGAATTAGATGAAGATGGAACTCCAGAGCA  
 CCTTTCATTAGGAATGTTATAATGCATGAAGGCAGCTGGGGAGTATCTCACACACGTGTGCCAACAGAAT  
 CTCGGCCTGGCCATGTAGCCTTGATAGCTGGATTTTATGAGGATGTCAGTGCAGTTGCCAAAGGATGGAA  
 AGAAAATCCTGTAGAATTTGACTCTCTTTTTAATGAAAGCAAGTACACGTGGAGCTGGGGGAGTCCAGAT  
 ATCTTGCCCATGTTTGCCAAAGGTGCTAGTGGTGACCATGTCTATACATATAGTTACGATGCTCAAAGAG  
 AAGATTTTGGTGGCCACGATGCCACAAAAGTGGATACGTGGGTTTTTGTAAAGTTAAGGACTTCTTTGA  
 TGCTGCAAGAAACAACCAATCTTTGTTCAAAAAGTAAATGAAGAAAAAGTAGTTTTTTTCTTACATTTA  
 TTGGGAATAGATACAAATGGACATGCTCATCGACCATCGTCAAGGGAATATAAGGACAATATTA AAAAG  
 TTGATGATGGAGTGAAGGAAATCGTATCAATTTTCAAGCATTTTTATGGAGATGATGGGAAAACAGCATT  
 TATCTTTACCTCTGACCATGGAATGACAGACTGGGGTTCCCATGGGGCTGGTCAATCCGTCAGAGACTTTA  
 ACTCCGTTCTGTTACTTGGGGAGCTGGAATCAAATTTCTCAAATGTATCAGCTCAGCAATATGATGATG  
 AGTTTTTAAAAGAATGGAGATTGGAAAAGTGGAAAAGGAGAGATGCAATCAGGCTGATATTGCACCTCT  
 GATGGCATCCCTTATTGGAGTCCCCTTCTCTTAATTCGGTGGGAATACTTCTGTGGGTTATCTTAAC  
 AACACTGGTCTCTTCAAAGCAGAGAGCATGTTTACCAATGCAGTACAGATTCTTGAACAGTTCAAGGTGA  
 AAATGACTCAGAAAAAAGAACCCACTTTACCGTTTTTGTTTACACCATTTAAGTTGCTTTCTGATCTCA  
 ACAACTGGACATTTTAAAGAAAAGCAAGTCTTACATAAAAACAAGAAAAATTTGATGAAGTAGTGTCCCTC  
 TGTGAGGAGCTGATTGACCTCGCCCTGAGAGGATTGCTCTATTATCATACTTATGACAGACTGTTTCTGG  
 GCATCAATGTTGCAGTTGGTTTTGTGGGATGGATGCTTATACTTCTTTGTTAATCATCAAGTCGCATTC  
 TAATATCCCAAAGGCACTAGGAAGGAAGTAAGAAGCCACACTGTCTCTGCTTTATAGCTTCATAGCT  
 ACTGGTGTCTTAGTAGCATGCTTCTGATGATCCAAGCCTGTCCCTGGACTTACTATGTGTACTGCTTGC  
 TGCCAGTGCTATATGGTATGCAGTCTAAGAGAACATGAAGTATTCAAGACCTGGTTGAATCACTATT  
 GACTTTTCTCGGAGCCATTTTGTGCCTACTTGTCTTTACCTTGGGTATTGAAGTACTGGTGCTC  
 AGTTTTCTTACCGCTACATGTTGACAGCGGGACTGATTGTGTTGCAGGCTGGCCGTTTCTCACTCAGC  
 TGTGGACCCGAGCAAAGATCACCTTCTGAGTTGGGCTTTCTTCTTTGCTTCTGGCAGTGTCCCACT  
 GATGCCTGCTGTTGGGTAGAAAGCCAAACCTTTCTAGTAAATGGGTGCTGGATTCCCTGGTCTTCTGCTG  
 TCGCTGGCTGTTGTAACAACCTCTCGAAAAAGAAACATTAATTTGGTAAAGGGCGAGCTGTTGGTACTTC  
 TGTACAGATGCTGAGTACAGTGTCTCTATGTATGTGGTGTATAGCACCACCACAGTCTGTTAAAGAA  
 AGAAGGCTGCCTCTTATGAATCAGATTGTGAGCTGGGCAACATTAGCCTCTTCTCTGGTGGCACCCTC  
 CTGAGCTCCACAGCTCTCTCAGCGACTGGCCAGCATACTCCTCTCCTTGATGTCCACCTACCTGCTCC  
 TAAGCACTGGGTATGAAGCTCTCTTTCTTTAGTGCTGCCTGTTGATGTTGTCTGGATCCAAGTGGAA  
 ACAAGAGACCCCTCAACAGCCTGGTGTCTTTGTAACAGAAGCTCACCAGCATCCAGTTCACCTGTGAC  
 ACTGATATAGCTCAGTTCGACAGCTCTGTCCGGATGACATCCGTAGGGCCTTTTTCTAGTTTTCTTTT  
 TATTAAGTGCATTTTTTGGAACTGGAAATATAGCTTCTATTAACAGCTTCGACCTTGCCTCTGTGTATTG  
 CTTTCTGACTGTGTTAGTCTTTTATGATGGGAGCGCTCATGATGTGGAAGATTTAATTCCTTTTGT  
 CTTGTGATGTGTGCTTTTGAAGCAGTTCAGATAACTACACAGCTGTCTCAAAGGTCTTTTTCTTGTG  
 TTCTCATCATATCAGACATCATGGCTTTGCATTTTTTCTTCTGGTCAAGGATTCTGGCAGCTGGCTTGA  
 TATTGGAACAAGCATCAGCCACTATGTGATTGTGATGTCCATGACCATCTTCTGGTATTCTTAATGGC  
 CTGGCACAATTGCTCACAACAAAGAACTCCAAGTGTGTGGCAAAACCAAAGTCACTTTATG

**ACGCGT**ACGCGGCCGCTCGAG - GFP Tag - GTTTAA

**Protein Sequence:** >MG217961 representing NM\_013784  
 Red=Cloning site Green=Tags(s)

MLLFFALGLLIHFVFFASIFDIYFTSPLVHGMPQFTPLPPPAKRLVLFVADGLRADTLYELDEDGNSRA  
 PFIRNVIMHEGSWGVSHTRVPTESRPGHVALIAGFYEDVSAVAKGWKENPVEFDSL FNESKYTWSWGSPD  
 ILPMFKAQASGDHYYTYSYDAQREDFGAHDATKLDTWVFDKVKDFDAARNNQSLFTKVNEEKVFFLHL  
 LGIDTNGHAHRPSSREYKDNIIKVDGKVEIVSIFKHFYGGDGKTAFFITSDHGMDWGSHGAGHPSETL  
 TPFVWTGAGIKFPQNVSAQQYDDEFLEWRLLENWKRDRVQADIAPLMASLIGVPPFLNSVGILPVGYN  
 NTGLFKAESMFTNAVQILEQFKVKMTQKKEATLPFLFTPFKLLSDSQQLDILRKARSYIKQEKDFEVVSL  
 CEELIDLALRGLSYYHTYDRLFLGINVAVGVFGWMSYTSLLIIKSHSNIPKGRKEGKPHCLLLYSFIA  
 TGVLVACFLMIQACPWTYYVYCLLPVPIWYAVLREHEVIQDLVESLLTFPRSHFVAYLLVFTLGIEVLV  
 SFFYRYMLTAGLIVFAGWPFLTQLWTRAKITFLSWAFFSLLLAVFPLMPVVGRKPNLSLVMGAGFLVLL  
 SLAVVTTLGKRNIKLVKCELLVLLQMLSTVLSMYVVYSTHSHLLKKEGLPLMNQIVSWATLASSLVAPL  
 LSSTALSQRASILLSLMSTYLLSTGYEALFPLVLSCLMFVWIQVEQETLQQPGVSCQKQLTSIQFTCD  
 TDIAQFRQLCPDDIRRAFFLVFLLTAFFGTGNIASINFDLASVYCFLTVFSPFMMGALMMWKILIPFV  
 LVMCAFEAVQITTLSSKGLFLVLLIISDIMALHFFLVKDSGSWLDIGTISHYVIVMSMTIFLVFLNG  
 LAQLLTTKKLQLCGKPKSHLM

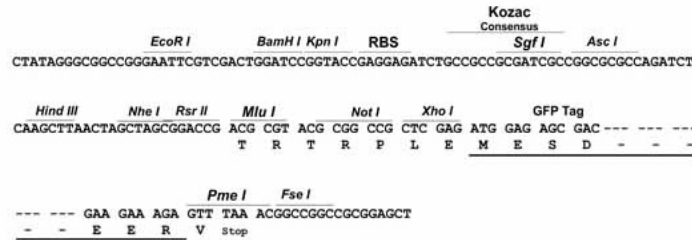
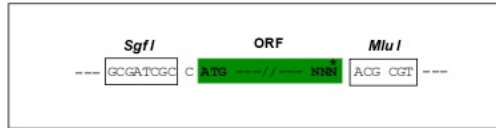
TRTRPLE - GFP Tag - V

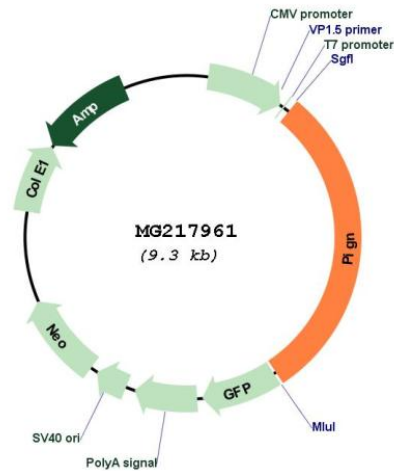
**Restriction Sites:**

SgfI-MluI

**Cloning Scheme:**

Cloning sites used for ORF Shuttling:



**Plasmid Map:**


**ACCN:** NM\_013784

**ORF Size:** 2793 bp

**OTI Disclaimer:** The molecular sequence of this clone aligns with the gene accession number as a point of reference only. However, individual transcript sequences of the same gene can differ through naturally occurring variations (e.g. polymorphisms), each with its own valid existence. This clone is substantially in agreement with the reference, but a complete review of all prevailing variants is recommended prior to use. [More info](#)

**OTI Annotation:** This clone was engineered to express the complete ORF with an expression tag. Expression varies depending on the nature of the gene.

**Components:** The ORF clone is ion-exchange column purified and shipped in a 2D barcoded Matrix tube containing 10ug of transfection-ready, dried plasmid DNA (reconstitute with 100 ul of water).

**Reconstitution Method:**

1. Centrifuge at 5,000xg for 5min.
2. Carefully open the tube and add 100ul of sterile water to dissolve the DNA.
3. Close the tube and incubate for 10 minutes at room temperature.
4. Briefly vortex the tube and then do a quick spin (less than 5000xg) to concentrate the liquid at the bottom.
5. Store the suspended plasmid at -20°C. The DNA is stable for at least one year from date of shipping when stored at -20°C.

**RefSeq:** [NM\\_013784.3](#), [NP\\_038812.2](#)

**RefSeq Size:** 6777 bp

**RefSeq ORF:** 2796 bp

**Locus ID:** 27392

**Cytogenetics:** 1 E2.1