

## Product datasheet for **MG217949**

### Ankrd55 (NM\_029898) Mouse Tagged ORF Clone

#### Product data:

Product Type:	Expression Plasmids
Product Name:	Ankrd55 (NM_029898) Mouse Tagged ORF Clone
Tag:	TurboGFP
Symbol:	Ankrd55
Synonyms:	C030011J08Rik
Mammalian Cell Selection:	Neomycin
Vector:	pCMV6-AC-GFP (PS100010)
E. coli Selection:	Ampicillin (100 ug/mL)



[View online »](#)

**ORF Nucleotide Sequence:**

>MG217949 representing NM\_029898  
 Red=Cloning site Blue=ORF Green=Tags(s)

TTTTGTAATACGACTCACTATAGGGCGGCCGGAATTCGTCGACTGGATCCGGTACCGAGGAGATCTGCC  
 GCC**CGCATCGCC**

ATGAGACAGGCTACCATGGATTTACGACCTCTTCTGTGTTTATGATCAGCACAAAGGTGACTCATCTGAAG  
 AAGTCGACCTGGCAATGGTGTATCAGGCAGCATCGAATGGAGATGTCAACTCTCTGACCTCCGTCATTCCG  
 GGAGGATCCGTCCATCCTGGAGTGTGTGACAGTGAAGGATGCACGCCCTTGATGCACGCGGTTTCAGGA  
 CGTCAAGTGGACACAGTAAAATTGCTGTAAAGATGGGTGCCAACATTAACACACAGGATGCGTATGGTC  
 GCACCAGTTTATGCCTGGCAACCTACCTGGGCTGGCTTGAAGGCTGTGTGAGTCTGCTCAGAAAACGGTGC  
 CAAGCACAAACATCCAGATAAAAATGGCCGCTACCTCTGCACGCTGCCACTGCAGAGCCTGATGTGAGG  
 CTCCTCATAGTCTGCTGCAGCAGTCCAGCCTCAGTGAGATCAACCATCAAGACACGGAGGGGATGACGC  
 CACTCCATTGGGCAGCTTCCACAACCGGCCCTCAACACACCCAAATGCTGTTGAAGAAGGGGGCAGACCC  
 CACCCTTGTGGACAAGGATTTTAAACAGCCCTCCACTGGCAGTCCAGAGTGGAAATAGAATTCTGTGC  
 TCCATCATTCTGAGCCATCGGCAGGGCCCGTCCATTATCAACTACGACGACGAGAGTGGGAAGACGTGCG  
 TCCATATCGCTGCAGCTCCGGTTTCGGAGACATCATCAACGATTTGGCAAAGGTCCCGGAGTGTAACT  
 GCAGGCTCTGGATGTGGATGACAGAACCACCCCTGCACTGGGCTGCAGCTTCTGGAAGGCAGAATGTGTC  
 CAGTCACTGCTGGATCTGGGCATGGACAGCAACCTAAGGGACATTAACGAGAGCACGCCCTGGCCATCG  
 CCTTGTACTGCGGTACACGCGCTGTGTCCGGCTCCTTTCCCGAGAAGGCCGAGCAGAGCCTGCTAGGCC  
 TCTTCCCTCCAAAACAGCAACCCAAAAGAAGGAAGGACGATTCAGCATGCTCAACCAATCTTCTGC  
 AAAACAAGAAAGAGGAGCAGAAAAGCCATCAGAAAGACCAGAGCAGGGCCAGACCTAAGGAGGAGGAGA  
 CCTCGGAAGTCAATGACATCATGCCACCTTTGACAGTGTGCTGGATACCAACTGCCAAGTCCAGCTGG  
 TGACCAGGTGGACATGGTTGTCTTTAAGAAGAGGACCTCGGAGAATTCAAAGTATCTCTTGCCAGAAAAG  
 AAATCCCTGGCCGCAAGGGGCTCCCAACCAATCAGAACCAGAGTCTCCACCCATCACCTGGGCGGTC  
 ACTTCTGACAGCCTCCAGGGAGCCGTGTCCCATGCTGGCCTGAACGCTGGTCTCAGCATACTGCCCA  
 GCGTTCTCAGAAAAGTGAAGCGAACAGGACTTATTAATAATAGGACTGGCTGCCCGGTGCTACTAGAG  
 AATCCTTGAAGGGTGAACAGGCAGGTGTTCTCCTGCAAGGCTTGGACCGTGTCTTCTCTGATAAGT  
 TACTAGACAGGCTGTTGCTGGCCAGCCTGGTACCAGGAGCTCTGGGCCACCACATCTTCTCATCT  
 ACATAATCCCTCATCAGGACAAGCTTTCAGCATCTCTCCCAACAGACCTAAAATCAGAGATCTCCCC  
 TTAAGTCCGGAACAGCCTTGCACCTTGCAGACCAAAAATTTCTATCTGGAGAACCCTGAGAACAACCC  
 GGGTGTCTCCAGCAATCCAAGCCAGAGAGGACATGACCCACCACAGCTGGAGAGGCCAGAGGGGACA  
 TGACCCACCACGAGCTGAAGAGAGCGGGGGTCTCCAGTCCCACCCATGATGAAAAC

**ACGCGTACGCGGCCGCTCGAG** - GFP Tag - GTTTAA

**Protein Sequence:**

>MG217949 representing NM\_029898  
 Red=Cloning site Green=Tags(s)

MRQATMDFSTSSVFDQHKGDSSEEVDLAMYQAAASNGDVNSLTSVIREDPISILECCDSEGCTPLMHAVSG  
 RQVDTVKLLKMGANINTQDAYGRSLCLATYLGWLEGCVSLLRNGAKHNIPDKNGRLPLHAATAEPDVR  
 LLIVLLQQSSLSEINHQDTEGMTPLHWAFFHNRPHQHTQMLLKKGADPTLVKDFKTAHWAVQSGNRILC  
 SIILSHRQGPSIINYDDESGKTCVHIAAASGFVDIINDLAKVPECNLQALDVEDRTPHWAASGKAECV  
 QSLLDLGMDSNLRDINESTPLAYALYCGHTACVRLLSREGRAEPARPLPSQNSQPQKKEGRFSMLNQIFC  
 KNKKEEQKAHQKQSRARPKEEETSEVNDIATFDSVVDTNCQGPQDQVDMVVFVKRTSENSKYLLPEK  
 KSLARKGLPPIRTQSLPPIITLGGHFLTASQGAVSHAGLNAGPQHTAQRSQKSRSEQDLLNNRTGCPVSLE  
 NPWKGDTRQVFSCKAWTVSSDKLLDRLFAGQPGHQELSGPPHPLHNPSSGQALQHLSPNRPKIRDLP  
 FTRNSLAPLPDQKFLSGEPLRTNRVLPAPISQRGHDPHPAGESQRGHDPHPRAEESGGSSSPHTDEN

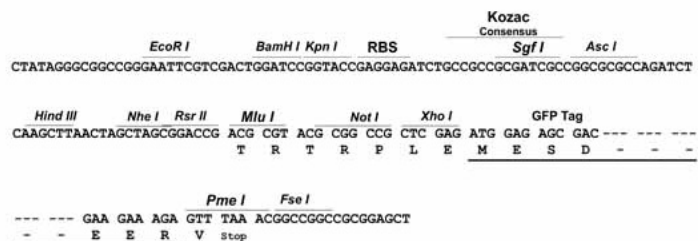
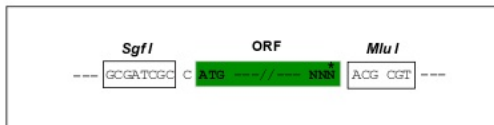
**TRTRPLE** - GFP Tag - V

**Restriction Sites:**

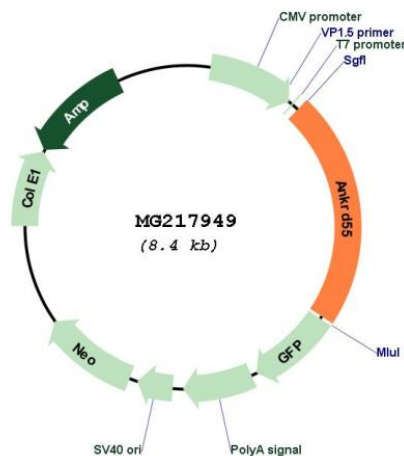
Sgfl-MluI

## Cloning Scheme:

Cloning sites used for ORF Shutting:



## Plasmid Map:



ACCN: NM\_029898  
 ORF Size: 1878 bp

<b>OTI Disclaimer:</b>	The molecular sequence of this clone aligns with the gene accession number as a point of reference only. However, individual transcript sequences of the same gene can differ through naturally occurring variations (e.g. polymorphisms), each with its own valid existence. This clone is substantially in agreement with the reference, but a complete review of all prevailing variants is recommended prior to use. <a href="#">More info</a>
<b>OTI Annotation:</b>	This clone was engineered to express the complete ORF with an expression tag. Expression varies depending on the nature of the gene.
<b>Components:</b>	The ORF clone is ion-exchange column purified and shipped in a 2D barcoded Matrix tube containing 10ug of transfection-ready, dried plasmid DNA (reconstitute with 100 ul of water).
<b>Reconstitution Method:</b>	<ol style="list-style-type: none"><li>1. Centrifuge at 5,000xg for 5min.</li><li>2. Carefully open the tube and add 100ul of sterile water to dissolve the DNA.</li><li>3. Close the tube and incubate for 10 minutes at room temperature.</li><li>4. Briefly vortex the tube and then do a quick spin (less than 5000xg) to concentrate the liquid at the bottom.</li><li>5. Store the suspended plasmid at -20°C. The DNA is stable for at least one year from date of shipping when stored at -20°C.</li></ol>
<b>RefSeq:</b>	<a href="#">NM_029898.3</a> , <a href="#">NP_084174.2</a>
<b>RefSeq Size:</b>	2781 bp
<b>RefSeq ORF:</b>	1881 bp
<b>Locus ID:</b>	77318
<b>UniProt ID:</b>	<a href="#">Q8BLD6</a>
<b>Cytogenetics:</b>	13 D2.2