

Product datasheet for **MG217947**

Armcx2 (NM_001166398) Mouse Tagged ORF Clone

Product data:

Product Type:	Expression Plasmids
Product Name:	Armcx2 (NM_001166398) Mouse Tagged ORF Clone
Tag:	TurboGFP
Symbol:	Armcx2
Synonyms:	3230401N03Rik; AI043003; ALEX2
Mammalian Cell Selection:	Neomycin
Vector:	pCMV6-AC-GFP (PS100010)
E. coli Selection:	Ampicillin (100 ug/mL)



[View online »](#)

ORF Nucleotide Sequence:

>MG217947 representing NM_001166398
 Red=Cloning site Blue=ORF Green=Tags(s)

TTTTGTAATACGACTCACTATAGGGCGGCCGGGAATTCGTCGACTGGATCCGGTACCGAGGAGATCTGCC
 GCC**CGCATCGCC**

ATGAGCCGAGCTCGGGATGCTGGCTGTGTAGCTGCTGGAATAGTGATTGGGGCAGTGCCTGGTACTGTG
 TCTACAAATATACTAGGGGAAAAGACCAGAAGAAGAAGAGGCTGACCAAGCCAAGAACCGGCCTCTGT
 GGGTACTGGAAGCAGGGCTAGAGCGGGCCTCAGAGCTGGATTACAATTGACCTTGGGCCAGGATTCAGT
 CCCCCAAACCCCGTCGATATTGAGATAATGAACAAGGCCCAAGGAGAAGCCTCCAATCTTGCCACCACCG
 TAGCTGAAGAAGTGGCACCAGCTGCACCCAGTCTAAGTTTCAAGATGGGGCAGAAAAGTAAGGTCCAGGA
 GTTAAATGGGGCTAAAAGTGGGCTAATCTGGAATCAGTAGTCATGCCTTCAGCTACCTGTACAGTTACA
 CCTCTCCCAAGGTGGCAGGGGGTCTCACTGCTGCAGAGGCTCCAGAAATCATAGGAGCTCCAAAGTGC
 TGAAGCTCCCAGCACCACAGAGGCTTCTGGGGCAGTAGCAGCCCCTGGACCAACAGTATCTCCAATGAT
 AGCCAGACTCCTGGGCCAGTGGTACCTTCGCCAACAATAGTGTCTACTGGGCCAGCAGCAATTCCTGG
 GCAGTGGCACATCCCGGGGCTGTCCAGTCTCCTGGGCCAGCAGTACCTCCCATGGCAGTCCAATCTCTTG
 TGCCAGCAGCACCTTCTGGGCAGTAGTAGCACCTCCTGGGGCAGTCTACATTCCTGTGGCAGCCCACTT
 TGCTGGGCCAGCAGCAGCTTCCAGGGTAACCCAGTCTCCTGGGACGGTGATACCTCCCCTTCCACCCCA
 TCATCAGTACTTCCCAGGGGAGTCCCATCAGTACCTGGCAGAACAGTCCAGTCTCCTGGGGCAGCCGTGC
 ATCCTGTGGCAGCCCAATCTACTGGGGTAGTAGTGCCTCCTAGGGCAGTACAGTATTCTGGGGCAGCAGT
 GACTTCTGGAGGGGCAGCAGTACCTTCCGGAGGGGCAGCAACTCCTAGGGCAGCAGCATCTACCCAGAGG
 ACAGCAAGCACAGAAGTCATGCAGTCCCTAGGGTGGCAGCAGCTACTGAAGCCACAGAGACTCCTAGAA
 TAGGAACACCTGCCATGGTAGTGGCTTCTCTGCCCTGCATTCTGGGGCTGCAGAGAATCCTGGGAC
 TTCAGGGTCTCTAAGACAGCAGCCACTGGCAAGAAGCAGCCCCTGGAGCTCACACTGGGGCTATACCT
 AAAGCTGGGTGAGCCACTGGAGCTGTACCCAAAGTGGAGGAGGCAAGGGTGGAAAACAAGAACCGGAGTG
 GAGGCAAGGGCAAAAATAGGAAGAACAAGGTTGATGTGGATGAGTTGGGGATGGGTTTCCGTCCTGGTGA
 TGGGGCTGCAGCTGCGCGGGCGGCTTCTGCTAATGGGGGGCAGGCCTTCTAGCAGAGATTCCGGAATCT
 GAGGAAGGGGAATCTGGGTGGACTGACACAGAGTCCGATTCTGACTCTGAGCCGGACGTCCCGCAGAGAG
 GGAAGGGGAAGAGAACCATTCCCATGCATAAGCGCCCTTCCATATGAAATTGATGAGATCCTAGGTGT
 TCGAGATCTCAGGAAAGTCTAGCCTTGCTTCAAGTCAAGTATGATCCCTTCATTAGCAAGTAGCCCTG
 CTCACCCTGAGCAACAATGCCAATTATTCATGTAATCAAGAAACAATCCGAAAGTTGGGAGGCCTCCCAA
 TTATTGCAAACATGATCAACAAAAGTACCCCCACATTAAAGGAAAAGCCTTAATGGCCATGAATAACCT
 GAGTGAATAATGAAAACCGGGCAGACTTCAGGTGTACATGAATAAAGTATGATGATATTATGGCT
 TCTAACCTGAACTCAGCGGTACAGGTAGTTGGGCTAAAATTTTTAACAACATGACTATTACTAATGACT
 ACCAGCACCTGCTTGCAATTCATTGCCAACTTTTTCCGCTTGTATCTCAGGGGGGTGGAAAAATCAA
 GGTTGAGATTCTGAAAATACTTTCAAACCTTGTGAAAATCCGGACATGCTAAAGAAACTTCTCGGTACC
 CAGGTGCCGTATCATTAGTCCCTTTATAATCTTATGTGGAATCAGAAATCTTATTAATGCCCTTA
 CTCTATTTGAGATTATCTTCGACAACCTCAGAGCAGAAGTGTCAACTACAGGGAATTCAACAAGGGGTC
 CCTGTTTTACTTATGCACTACATCTGGGGTGTGTGTAAGAAAATTCGAGCCTTAGCAAAATCACCACGAC
 CTCTTGGTGAAAGTAAAAGTTATAAAGCTGGTAAACAAATTC

ACGCGTACGCGGCCGCTCGAG - GFP Tag - GTTTAA

Protein Sequence: >MG217947 representing NM_001166398
 Red=Cloning site Green=Tags(s)

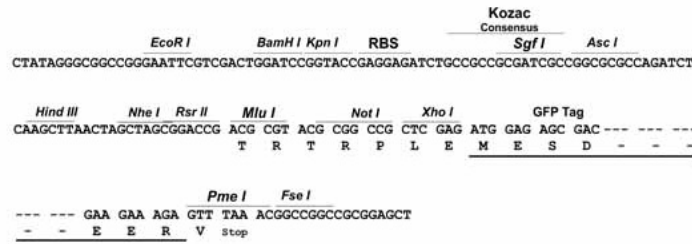
```
MSRARDAGCVAAGIVIGASAWYCVYKYTRGKDQKKKRLTKPKNRSVGTGSRARAGLRAGFTIDLGPFGS
PPNPVDIEIMNKAQGEASNLATTVAEEVAPAAPSPKVQNGAESKVQELNGAKTEANLESVMPSATCTVT
PPPKVAGGLTAAEAPEIIGAPKVL EAPSTTEASGAVAAPGPTVSPMIAQTTPGPVVPSTIVSTGPAAI PW
AVAHPGAVQSPGPAVPPMAVQSLVPAAPSWAVVAPPGAVYIPVAHFAGPAAASRVTSQPGTVIPPLPPP
SSVLPRGVPSVPGRTVQSPGAAVHPVAAQSTGVVPPRAVQYSGAAVTSGGAAVPSGGAATPRAAASTQR
TASTEVMQVPRVAAATEATETPRIGTPAMVAEASLPVHSGAAENPGTSGSSKTAATGKKAAPGAHTGAIP
KAGSATGAVPKGGGGKGNKNSGGKGNRKNKVDVDELGMGFRPGDGAAAAAASANGGQAF LAEIPES
EEGESGWTDES DSDSEPDV PQRGKGKRTIPMHKRPFPYEIDEILGVRDLRKVLALLQKSDDPFIQQVAL
LTL SNNANYS CNQETIRKLGGLPIIANMINKTDPHIKEKALMAMNNLSEN YENQGR LQVYMNKVMDDIMA
SNLNSAVQVVGLKFLTNMTITNDYQHLLVNSIANFFRLLSQGGGKIKVEILKILSNFAENPDMLKKLLGT
QVPSSFSLSYVVESEILINALTLFEIIFDNLRAEVFN YREFNKGS LFYLCTTSGVCVKKIRALANHHD
LLVKVKVIKLVNKF
```

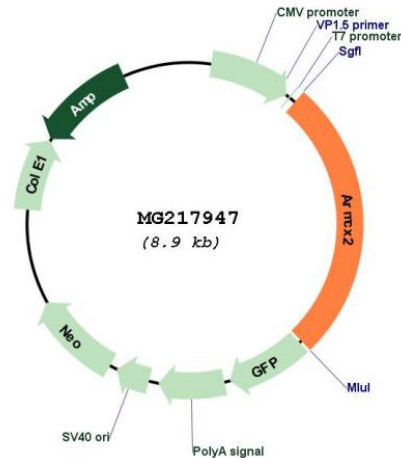
TRTRPLE - GFP Tag - V

Restriction Sites: SgfI-MluI

Cloning Scheme:

Cloning sites used for ORF Shuttling:



Plasmid Map:


ACCN: NM_001166398

ORF Size: 2352 bp

OTI Disclaimer: The molecular sequence of this clone aligns with the gene accession number as a point of reference only. However, individual transcript sequences of the same gene can differ through naturally occurring variations (e.g. polymorphisms), each with its own valid existence. This clone is substantially in agreement with the reference, but a complete review of all prevailing variants is recommended prior to use. [More info](#)

OTI Annotation: This clone was engineered to express the complete ORF with an expression tag. Expression varies depending on the nature of the gene.

Components: The ORF clone is ion-exchange column purified and shipped in a 2D barcoded Matrix tube containing 10ug of transfection-ready, dried plasmid DNA (reconstitute with 100 ul of water).

Reconstitution Method:

1. Centrifuge at 5,000xg for 5min.
2. Carefully open the tube and add 100ul of sterile water to dissolve the DNA.
3. Close the tube and incubate for 10 minutes at room temperature.
4. Briefly vortex the tube and then do a quick spin (less than 5000xg) to concentrate the liquid at the bottom.
5. Store the suspended plasmid at -20°C. The DNA is stable for at least one year from date of shipping when stored at -20°C.

RefSeq: [NM_001166398.1](#), [NP_001159870.1](#)

RefSeq Size: 3626 bp

RefSeq ORF: 2355 bp

Locus ID: 67416

UniProt ID: [Q6A058](#)

Cytogenetics: X E3

Gene Summary: May regulate the dynamics and distribution of mitochondria in neural cells.[UniProtKB/Swiss-Prot Function]