

Product datasheet for **MG217837**

Slc4a7 (NM_001033270) Mouse Tagged ORF Clone

Product data:

Product Type: Expression Plasmids
Product Name: Slc4a7 (NM_001033270) Mouse Tagged ORF Clone
Tag: TurboGFP
Symbol: Slc4a7
Synonyms: E430014N10Rik; NBC3; NBCn1; NBCn1-G
Mammalian Cell Selection: Neomycin
Vector: pCMV6-AC-GFP (PS100010)
E. coli Selection: Ampicillin (100 ug/mL)
ORF Nucleotide Sequence: >MG217837 representing NM_001033270
Red=Cloning site Blue=ORF Green=Tags(s)

TTTTGTAATACGACTCACTATAGGGCGGCCGGAATTCGTCGACTGGATCCGGTACCGAGGAGATCTGCC
GCC**CGATCGCC**

ATGGAGGCAGACGGGGCCGGCGAGCAGATGAGACCGCTACTCACGGGGTCCAGATGAAGAAGCTGTTG
TGGATCTTGGCAAACTAGCTCAACTGTGAACACCAAGTTTAAAAAGAAGAATTAGAAAGTCATCGAGC
TGTATATGTTGGTGTTCATGTACCATTTAGTAAGAGAGTCGTCGGCGTCACAAGCATCGAGGGCACAAA
CATCACCACCGGAGAAGAAAAGACAAAGACTCAGATAAAGAAGATGGACGGGAATCTCCTTCTTATGACA
CGCCATCGCAGAGGGTGCAGTTCATCCTCGGGACTGAAGACGACGATGAGGAGCACATCCCCACGACCT
CTTCACAGAGATGGATGAGCTCTGCTACAGAGACGGAGAAGAGTACGAGTGGAAGGAGACGGCCAGGTGG
CTGAAATTTGAAGAGGATGTTGAAGATGGTGGTACCGATGGAGTAAACCTATGTGGCAACTCTGTCTC
TACACAGTCTCTTTGAATTGAGGAGTTGTATCCTGAATGGAACAGTTATGCTGGATATGAGAGCAAGCAC
TCTTGATGAAATTGCAGATATGGTGTAGACAACATGATAGCATCTGGCCAGTTAGATGACTCCATAAGG
GAGAACGTCAGAGAAGCTCTTCTGAAGAGACATCATCAAAATGAGAAAAGTTACAGAGTCGGATTC
CCCTGGTTCGATCCTTTGCAGATATAGGCAAGAAAACATCTGACCCTCACTTGCTTGAAGGAATGGGAT
TTTGGCTTCTCCACAGTCTGCTCCTGAAAACCTGGACAATAGTAAAAGTGGTGAATGAAAGGTAACGGA
AGTGGAGGAAGCAGAGAAAATAGTACTGTTGACTTTAGCAAGGTTGACATGAATTTTCATGAGGAAAATTC
CTACAGGAGCTGAGGCATCCAATGTTTTGGTAGGAGAAGTGGACTTCTTGAGAGACCGATCATTGCATT
TGTGAGACTGGCTCCTGCAGTTCCTCTCAGGGTTGACTGAGGTCCTGTGCCACTAGGTTTTTGT
CTGTTACTGGGCCAGCAGGAAAGCCCCACAGTACCATGAAATGGCAGATCCATAGCAACTCTCATGA
CAGATGAGATTTTTCATGATGTGGCTTATAAAGCAAAAGATCGTAATGACCTCCTATCTGGAATTGATGA
ATTCTTAGATCAAGTAACTGTTCTTCTCCAGGAGAGTGGGATCCTTCCATACGCATAGAGCCTCCAAAA
AGTGTTCCTTCTCAGGAAAAAGGAAGATTCCTGTGTTTCTAATGGATCTGCTGCAATGTCTGTTGACC
CTCCAAAGGAGGATGATCACCATGCTGGCCTGAGCTGCAGAGGACTGGACGGCTTTTTGGTGGTTTGT
ACTTGACATCAAAAGGAAAGCACCTTTTTTCTTGAGTGACTTCAAGGATGCATTAAGTCTGCAGTGCCTG



[View online >](#)

```
GCCTCGATTCTTTTCTATACTGTGCCTGTATGTCTCCTGTAATCACTTTTGGAGGGCTGCTTGGAGAAG
CTACAGAAGGCAGAATAAGTGAATAGAGTCTCTTTTGGAGCGTCATTAAGTGGGATTGCCTATTCATT
GTTTGTCTGGGCAACCTCTAACTACTGGGAGCACAGGTCCAGTCCAGTGTGTTGAAAAATTTTATTT
AAATTCTGTAGAGATTATCACCTTCTCTATCTATCATTAAAGAACAGTATTGGTCTGTGGACATCTTTCT
TGTGCATTGTATTGGTCGCAACAGATGCAAGCAGCCTTGTGTTACATTACTCGTTTACAGAGAAGC
TTTTGCGGCTCTCATTGTATCATATTCATCTATGAAGCTCTGGAGAAGCTTTTCACTTAGGAGAATA
TATGCATTTAATATGCACAACAACCTGGATGAATTGACCAGTTACACATGTGTATGTGCTGAGCCATCTA
ACCCTAGCAACGAACTCTAGAAGTGTGGAAGAGGAAGAATAAACAGCATACAGTGTCTTCTGGGCAA
CCTTACTGTTTCTGAGTGAAGACCTTCCATGGTATGTTTGTGGGATCAGCTTGTGGCCTCATGGACCT
TATGTTCTGACGTGCTCTTCTGGTGTGCGTCTGTTTTTACGACGTTCTTTCTGTCTTCATTCTCA
AGCAGTTTAAAGCCAAGAGATATTTTCTACCAAGGTACGATCAACAATCAGTACTTGTGTATTTCT
CACAATAGTAATAATGGTTGCAATTGACTACCTTGTAGGAATCCATCTCCTAACTTATGTGCCTGAA
AAGTTCGAGCCTACTGATCCAAGTAGGGGCTGGATCATAAGCCCTTGGGAGATAACCCTTGGTGGACCT
TACTAATTGCAGCAGTTCAGCTCTCCTTGTACTATTCTCATCTTTATGGACCAGCAGATCACAGCTGT
AATCATCAACAGAAAAGAACAACAACCTCAAGAAAGGAGCTGGCTACCACCTTACTTGTCTATGGTTGGT
GTCATGTTGGGAGTCTGCTCTATCATGGCTTGCCTGGTGTGTTGGCTGCGACAGTGTGTCTATAAGTC
ATGTCAACAGCTTAAAAGTGGAGTCTGAGTGTCTGCTCCAGGGGAGCAGCCAAAGTTTCTGGGAATTCG
TGAACAGCGGGTTACAGGGCTGATGATTTTTATCCTGATGGGCTCTCTGTGTTGATGACTTCAAGTATTA
AAGTTTATCCCAATGCCAGTTTTGTACGGTGTGTTTTCTTTATATGGGAGTTTTCATCGTTGAAAGGAATTC
AGTTTTTTGACCGTATCAAGTATTTGGAAATGCCTGCCAAGCACCAGCCGACCTAATCTACCTCCGCTA
TGTCCCTGTGGAAAGTGCACGTGTTACGGTCCAGCTGACCTGCCTAGTCTGCTGTGGGTGATC
AAAGCCTCTGCTGCTGCAGTGTGTTTCCCATGATGGTCTTGCATTAGTCTTTGTGCGCAAGCTCATGG
ATCTCTGTTTCAAAAAGAGAGAAGTCAAGTGGCTTGCATGACCTCATGCCAGAAAAGTAAAGAAAAGAAA
AGATGACAAAAAGAAAAAGAGAAAAGGAAGCTGAACGGATGCTTACAGGATGATGAGGACACTGTGCAC
CTCCATTGAAAAGAGGGAGTCTCCTGCAGATTCCAGTAAAACTCTAAAATATAGTATTGACCCTTCAG
TTGTTAACATATCAGATGAAATGGCCAAAAGTGGCAGTGGAAAGGCATTTCCATGAATACTGAGAATGC
CAAAGTAAAGAGACCTAACACGAGCCCTGAAAAGCCTGTGAGTGTGACAATAAATTTGAAAGATGAACCC
TCAAAAAATACATGGATGCTGAACTTCATTG
```

ACGCGTACGCGGCCGCTCGAG - GFP Tag - GTTTAA

Protein Sequence:

>MG217837 representing NM_001033270
 Red=Cloning site Green=Tags(s)

```
MEADGAGEQMRPLLTRGPDEEAVVDLKGTSSTVNTKFEKEEESHRAVYVGVHVPFSKESRRRHKHRGHK
HHHRRRKDKSDKEDGRESPSYDTPSQRVQFILGTEDDDEEHIPHDLFTEMDLICYRDGEEYEWKETARW
LKFEEDVEDGGDRWSKPYVATLSLHSLFELRSCILNGTVMLDMRASTLDEIADMVLDNMIASGQLDDSSIR
ENVREALLKRHHHQNEKRFTSRIPLVRSFADIGKKHSDPHLLERNGILAS PQSAPGNL DNSKSGEMKNGG
SGGSRENSTVDFSKVDMNFMRKIPTGAEASNVLVGEVDFLERPIIAFVRLAPAVLLSGLTEVPVPTRFLF
LLLGPAGKAPQYHEIGRSIATLMTDEIFHDVAYKAKDRNDLLSGIDEFLDQVTVLPPGEWDPSSIRIEPPK
SVPSQEKRKIPVFPNGSAAMSDVPPKEDDHHAGPELQRTGRLFGGLILDIKRKAPFFLSDFKDALSLQCL
ASILFLYCACMSPVITFGLLGEATEGRISAIESLFGASLTGIAYSL FAGQPLTILGSTGPVLVFEKILF
KFCRDYHLSYLSLRTSIGLWTSFLCIVLVATDASSLVCIYITRFTEEAFAALICIIIFIYEALEKLFHLGEI
YAFNMHNNLDELTSYTCVCAEPSNPSNETLELWKRKNITAYSVSWGNLTVSECKTFHGMFVGSACGPHGP
YVPDVLFWCVLFFTTFFLSSFLKQFKTKRYFPTKVRSTISDFAVFLTIVIMVAIDYLVGIPSPKLHVPE
KFEPTDPSRGWIIISPLGDNPWWTLLIAAVPALLCTILIFMDQITAVIINRKEHKLKKGAGYHLDLLMVG
VMLGVCSIMGLPWFVAATVLSISHVNSLKVSECSAPGEQPKFLGIREQRTGLMIFILMGLSVFMTSVL
KFIPMPVLYGVFLYMGVSSLKGIQFFDRIKLFGMPAKHQPDLIYLRVPLWKVHVFTVVQLTCLVLLWVI
KASAAAVVFPMMVLALVFVRKLMDLCTFKRELSWLDLMPESKKKKEDDKKKKEKEEAERMLQDDEDTVH
LPFERGSLQIPVKTLKYSIDPSVNNISDEMAKTAQWKALSMNTENAKVTRPNTSPEKPVSVTINFEDEP
SKKYMDAETSL
```

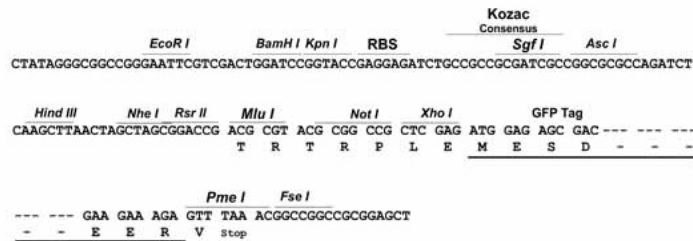
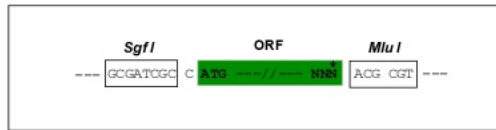
TRTRPLE - GFP Tag - V

Restriction Sites:

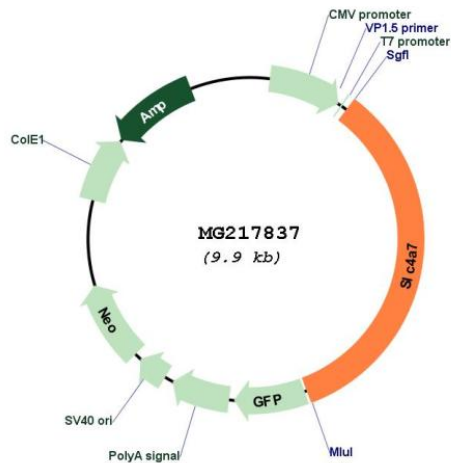
SgfI-MluI

Cloning Scheme:

Cloning sites used for ORF Shuttling:



Plasmid Map:



ACCN: NM_001033270

ORF Size: 3393 bp

OTI Disclaimer: The molecular sequence of this clone aligns with the gene accession number as a point of reference only. However, individual transcript sequences of the same gene can differ through naturally occurring variations (e.g. polymorphisms), each with its own valid existence. This clone is substantially in agreement with the reference, but a complete review of all prevailing variants is recommended prior to use. [More info](#)

OTI Annotation: This clone was engineered to express the complete ORF with an expression tag. Expression varies depending on the nature of the gene.

Components: The ORF clone is ion-exchange column purified and shipped in a 2D barcoded Matrix tube containing 10ug of transfection-ready, dried plasmid DNA (reconstitute with 100 ul of water).

Reconstitution Method:

1. Centrifuge at 5,000xg for 5min.
2. Carefully open the tube and add 100ul of sterile water to dissolve the DNA.
3. Close the tube and incubate for 10 minutes at room temperature.
4. Briefly vortex the tube and then do a quick spin (less than 5000xg) to concentrate the liquid at the bottom.
5. Store the suspended plasmid at -20°C. The DNA is stable for at least one year from date of shipping when stored at -20°C.

RefSeq: [NM_001033270.2](#), [NP_001028442.2](#)

RefSeq Size: 7389 bp

RefSeq ORF: 3396 bp

Locus ID: 218756

Cytogenetics: 14 A1