

Product datasheet for **MG217828**

Noc2l (NM_021303) Mouse Tagged ORF Clone

Product data:

Product Type:	Expression Plasmids
Product Name:	Noc2l (NM_021303) Mouse Tagged ORF Clone
Tag:	TurboGFP
Symbol:	Noc2l
Synonyms:	AA410003; AF155546; NIR
Mammalian Cell Selection:	Neomycin
Vector:	pCMV6-AC-GFP (PS100010)
E. coli Selection:	Ampicillin (100 ug/mL)



[View online »](#)

ORF Nucleotide
Sequence:

>MG217828 representing NM_021303
 Red=Cloning site Blue=ORF Green=Tags(s)

TTTTGTAATACGACTCACTATAGGGCGGCCGGGAATTCGTCGACTGGATCCGGTACCGAGGAGATCTGCC
 GCC**CGGATCGCC**

ATGGCTGCGTCTCGCGCTCCCCGAGGCGCCTGGAGGACCTCAGTGTGGACGAGTTCCTGGCTTCCGGCT
 TCGAGTCCGGATCCGAGTCGGAGCTGGAGGGCGCCGCGGAGGCGCGCGGAGGAGCGCAGGGCGCGAGG
 AGCCGCGTGGAACCGGGAGCGGGCGGCGCGCACCTCCCCGGGCCCCGAGGACGCCCGCTAAGGGC
 CGCGCCTCTGAGCACAAGACCAGCTCTCTCGGCTGAAGGACAGAGACCCCGAGTCTACAAGTTCCTGC
 AGGAGAATGACCGGAGCCTACTGGACTTCACTGACTCGGACAGCTCTGCGGAAGAAGAAGAGCCATTCCA
 CTCCTGCCAGACAGCTGGAGGAAGCGAGCGAAACAGAGGAAGACGGAGGAGAGGACAGTGACGCGTTG
 CCCAGAGGGCTGAGGAGCAAGAAGAATGAGCCTGTACCCGTGACCCTCGCCATGGTGAAAGGTGGAGGC
 AGGGCTCCAGGCACCACCTTAGTCCCAGGCTGTTCCATGAAGTTGTACAGGCGTTCGAGCAGCTGTAGC
 CACCACCAAGGAGAGCAGGAAGCTGCTGAGACTTGCAGTTCCAGGTTGCAGATAGTGTGTGTTCAAT
 GCTCTGTTACTTCTGCAATTCGAGACCTCTGTGGTTGCCTTCAGAAGCTGCTGTTGGAAAGACACCAA
 AGGATAGCAATAGGCTGCTGCCATCCAGTAGCCCACTGTGGGGGAAGCTCCGTGTGGATGTCAAGACATA
 CCTAAGTGCGGTGGTGCAGCTGGTAGCCTGTCTAGCGGAAGCCACGGTGTCTGCAGCTGTCTGCAGCAT
 ATCAGCAGCTTGGTTCCTTACTACCTGACATTCCTAAGCAGTGCCGAATGTTGCTCAAGAGGATGGTGG
 TTCTGTGGAGCAGGGTGAAGAATCTCTGCGGGTCTGGCCTTCTGGTACTCATCAGAGTCTGCCGGCA
 CAAGAAGGAAGCCTTCTTGGTCCCATTCTGAAGCAAATGTACATCATGTATGTGAGAACTGCAAGTTC
 ACCTCCCCAGTACCCCTCCCCCTCATAAGCTTCATGCAACGGACACTGACTGAAATGCTTGCCTTGGACC
 CCAGCGTCTCTATCAGCACGCCTTCTCTACATCCGACAGCTTCCCGTCCACCTGCGGAATGCTATGAC
 CGCAGGCAAGAAGGAGACACACCAGTCTGTGTACAACCTGGCAGTATGTGCACTGCCTCTACCTGTGGTGT
 CGAGTCTGAGTACCCTTGGTTCAGTGAGATCCTGCAGCCGCTACTCTACCCTCTCTCACAGATCATCA
 TTGGCTGTATCAAGTTGTTGCCACTGCTCGATTTTATCCATTGCGCATGCATTGTGTACGTGCCCTGAC
 ACTGCTGTCCCAGACCATCGGCACCTTCATACCTGTCCTGCCCTTCACTTCGAGATTTTCCAGCAGGTG
 GACTTCAATAGGCGGCCAGGTGCGATGAGTTCGAAGCCCATCACTTCTCTGTGATCTTGAAGCTGTCCA
 GCACCAACCTGCAGGAGAAGGCGTACCGGGACGGGCTGCTGGAACAGCTGTGTGACCTTACTCTGGAATA
 CCTGCACAGCCAGGCCACAGCATCGCTTCCCAGAGTTGGTGTGCCTACTGTTCTACAGCTGAAATCT
 TTTCTCCGGGAGTGCAAAGTGGTAACACTGCGGCGAGGTGCGCCAGCTGCTGGAGAAAGTGAAGAGA
 ATGCACAACATATCCAAAGTCTTCGACAGAGCGCGACCTTCAGCGTGTCTGACCAGATGGCAGTGGATGC
 GTGGGAGAAGCAGGTTTCGTGAAGAGGGGACCCCACTCACCAGATACTACGGCCACTGGAAGAAGCTGAGG
 GACCGTGAGATCCAGCTGGAATCAGTGGCAAAGAGCGGCTAGAAGACCTGAACTTCCCAGAGATCAAAA
 GGCGGAAGGTGGAAGACAGGAAGGATGAAGACAGGAAAGAATTAAGGACCTGTTTGAGTTGGACAGTTC
 TGAGGGCAGGACAGCACCGACTTCTTTGAGAGAGGAGTACCTAGGCTCCAGAAGCTCACCAGGACTG
 AAAGAAGATCAGGAAGAAGAAGATAAAGAAGAAGGTGACAGCGATTACAGAGGATGGAGACACAGACCGG
 GAGTGGATCTGAGCGAAGTGTGGCAGCTGGCTCAGGGACCACAAGATGAGCTGGAGGATCTCAGCTCTC
 AGAAGAGGAC

AG**CGGACCC**ACGCGTACGCGGCCGCTCGAG - GFP Tag - GTTTAA

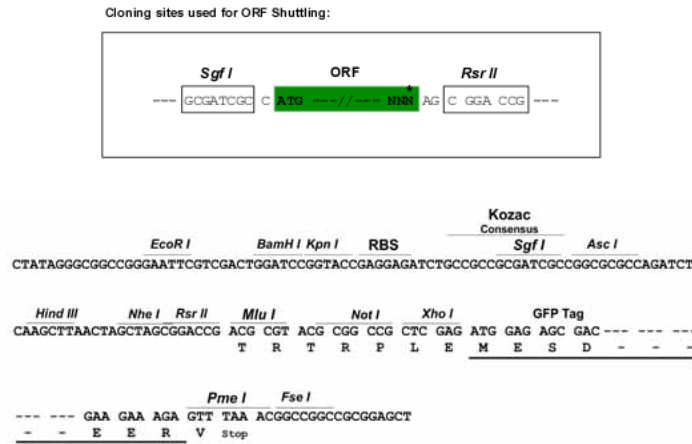
Protein Sequence: >MG217828 representing NM_021303
 Red=Cloning site Green=Tags(s)

MAASRAPRRRLEDLSVDEFLASGFESGSESELEGAAEAAAEEERRARGAAWNRRERGARTSPGPAGRPRKG
 RASEHKDQLSRLKDRDPEFYKFLQENDRSLLDFSDSDSSAEIEEPFHSLPDTLEEASETEEDGGEDSDAL
 PRGLRSKKNEPVPVTLAMVERWRQGSRHHLSPRLFHEVVQAFRAAVATTQGEQEAETCRFQVADSAVFN
 ALVTFCIRDLCGLQKLLFGKTPKDSNRLLPSSSPLWGKLRVDVKTYLSAVVQLVACLAEATVSAAVLQH
 ISSLVPHYLTFFPKQCRMLLKRMVVLWSTGEESLRVLAFLVLRVCRHKKEAFLGPILKQMYIMYVRNCKF
 TSPSTLPLISFMQRTLTEMLALDPSVSYQHAFLYIRQLAVHLRNAMTAGKKEHQSVYNNWQYVHCLYLWC
 RVLSTLGSSEILQPLLYPLSQIIGCIKLLPTARFYPLRMHCVRALTLSSQTIGTFIPVLPFILEIFQQV
 DFNRRPGRMSSKPINFSVILKLSSTNLQEAYRDGLLEQLCDLTLEYLHSAHSIAFPELVLPTVLQLKS
 FLRECKVANYCRQVRQLLEKVVQENAQHIQSLRQSATFSVSDQMAVDAWEKQVREEGTPLTRYIGHWKLLR
 DREIQLEISGKERLEDLNFPEIKRRKVEDRKDEDRKELKDLFELDSSEGEDSTDFFERGVPRLPEAHQGL
 KEDQEEEDKEEGSDSEDGDTDTGVDLSELWQLAQGPQDELEDLQLSEED

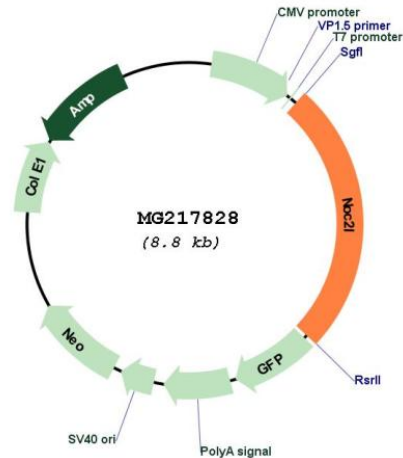
SGPTRRRLE - GFP Tag - V

Restriction Sites: SgfI-RsrII

Cloning Scheme:



Plasmid Map:



ACCN: NM_021303

ORF Size: 2250 bp

OTI Disclaimer: The molecular sequence of this clone aligns with the gene accession number as a point of reference only. However, individual transcript sequences of the same gene can differ through naturally occurring variations (e.g. polymorphisms), each with its own valid existence. This clone is substantially in agreement with the reference, but a complete review of all prevailing variants is recommended prior to use. [More info](#)

OTI Annotation: This clone was engineered to express the complete ORF with an expression tag. Expression varies depending on the nature of the gene.

Components: The ORF clone is ion-exchange column purified and shipped in a 2D barcoded Matrix tube containing 10ug of transfection-ready, dried plasmid DNA (reconstitute with 100 ul of water).

Reconstitution Method:

1. Centrifuge at 5,000xg for 5min.
2. Carefully open the tube and add 100ul of sterile water to dissolve the DNA.
3. Close the tube and incubate for 10 minutes at room temperature.
4. Briefly vortex the tube and then do a quick spin (less than 5000xg) to concentrate the liquid at the bottom.
5. Store the suspended plasmid at -20°C. The DNA is stable for at least one year from date of shipping when stored at -20°C.

RefSeq: [NM_021303.2](#), [NP_067278.2](#)

RefSeq Size: 2785 bp

RefSeq ORF: 2253 bp

Locus ID: 57741

Cytogenetics: 4 E2