

## Product datasheet for **MG217821**

### **Gnl3l (NM\_198110) Mouse Tagged ORF Clone**

#### **Product data:**

Product Type:	Expression Plasmids
Product Name:	Gnl3l (NM_198110) Mouse Tagged ORF Clone
Tag:	TurboGFP
Symbol:	Gnl3l
Synonyms:	BC020354
Mammalian Cell Selection:	Neomycin
Vector:	pCMV6-AC-GFP (PS100010)
E. coli Selection:	Ampicillin (100 ug/mL)



[View online »](#)

**ORF Nucleotide Sequence:**

>MG217821 representing NM\_198110  
 Red=Cloning site Blue=ORF Green=Tags(s)

TTTTGTAATACGACTCACTATAGGGCGGCCGGAATTCGTCGACTGGATCCGGTACCGAGGAGATCTGCC  
 GCC**CGGATCGCC**

ATGATGAAGATTAGACACAAAAACAAAAACCAGGTAAGGTTCCAAAGGCTGTAAGAAGCCTGCAAGGC  
 AAAATGGGAAGAAAGTAACCTCCAGACCATCATCTGCTCCCAGATTGTTTCATGGCAATGACCATGCCAG  
 TCGCGAGGCCGAATTAAGAAGAAAAAGGTCGAGGAGATGAGGGAGAAGCAGCAAGTTGCCCGGAGCAA  
 GAGAGACAGACACAGGACCATGGAGAGCTATTGTGAGGATGTCCTGAAACGTCAGCAGGAATTTGAAC  
 AAAAGGAGGAAGTTTTCAGGAATTAACATGTTTCTCAGTTGGATGATGAGGCCACAAGGAAGGCCTA  
 TTACAAGGAATCCGGAAGGTGGTAGAGTACTCTGATGTGATTCTGGAAGTCTAGATGCCAGAGACCCA  
 TTGGGCTGCCGCTGTTCCAGATGGAGGAGACTGCTTTCGTGCAGAAGGCAACAAGAAGCTGGTCTTGG  
 TCTTAAATAAGATAGATCTCGTCCCAAGGAGATTGTGAAAAGTGGCTGGAATACCTTCTCAATGAACT  
 GCCAACTGTGGCTTTCAAGGCCAGCACCCAGCATCATCAGGTCAAAAACCTTGACTCGTTGTAAGTTCCA  
 GTGGACCAGGCCCTCTGAGTCGCTTTTAAAAGCAGAGCCTGCTTTGGAGCCGAAAATCTCATGAGGGTCC  
 TGGGGAATATTGTGCCTGGGGGAAGTGCCTGGCCACATTTCGTGTGGGTGTTGTAGGCCTTCCCAATGT  
 GGGGAAGAGCAGTCTGATCAATAGCCTGAAGCGCAGCCGTGCTTGTAGTGTGGGAGCTGTTCTGGTGTG  
 ACAAAATTCATGCAGGAGGTCTACCTAGACAAGTTTATCAGGCTTCTGGATGCACCAGGCATTGTCCAG  
 GACCAATTCAGAGGTGGCACCATCCTGCGTAATTGCATCCATGTGCAGAAGCTGGCAGACCCTGTGAC  
 CCCGGTGGAGACCATCCTCAGCGCTGCAACCTGGAGGAGATTTCCAGCTACTATGGTGTATCTGGATTC  
 CAGACGACTGAGCACTTCTGACTGCAGTGGCCATCGCTTGGAAAGAAGAAGAAGGAGGTGTATATA  
 GTCAGGAACAGGCTGCCAAAGCTGTGCTGGTACTGGGTGAGTGGGAAGATCAGTTCTATACACTACC  
 ACCGCCACTCACACTCTGCCACCCATCTCAGTGTGAGATTGTTAAGGAGATGACTGAGGTCTTTGAT  
 ATAGAAGATACTGAGCACGCAATGAAGACCCATGGAATGCTTAGCTGTGGGAGAAATCCGATGAGCTGT  
 TGGGTGACATGGACCCACAAGAAATGGAGGTGAGTGGCTCCATTCTCCACTGGTAAAAATAGCAGATGC  
 TATTGAAATAGAAGCACCGTGTATAAGATTGAAATCTCACTGGGTATTGTACCAAACCAACCCTAAT  
 CAGATGGGTGGCTAAACGCAATGTGGACCACCATGCCCCAAAATAACCGTGTAGTAGAGGTGAGTT  
 CTGTGGACCGCCCGATGTTGCAGAGGATCCTGGAGACAGACCCTCAGCAAGGCCAGGCTCTGGC  
 ATCTGCCTTGAAGAATAAGAAAAAATTGCAGAAGCGTTTCAGATAAAATCGCCACTAAGTTGTCTGACTCC  
 ATGATGTCCATGCTTGACCTCTCTGGCAACTCCGATGACTGTGCAGGTGAC

**ACGCGTACGCGGCCGCTCGAG** – GFP Tag – GTTTAA

**Protein Sequence:**

>MG217821 representing NM\_198110  
 Red=Cloning site Green=Tags(s)

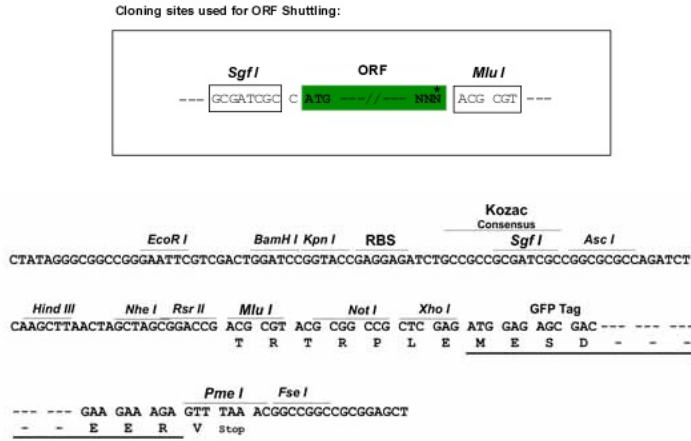
MMKIRHKNKPKGKSGKCKKPARQNGKKVTSRPSAPQIVHGNDHASREAEKKKRVEEMREKQQVAREQ  
 ERQRHRTMESYQDVLKRQQEFEQKEEVLQELNMFQLDDEATRKAYYKEFRKVVEYSVILEVL DARDP  
 LGCRFQMEETVLR AEGNKKLV LNKIDLVPKEIVEKWLEYLLNELPTVAFKASTQHHQVKNL TRCKVP  
 VDQASESLLKSRACFGAENLMRVLGNYCRLGEVRGHIRVGVVGLPNVGKSSLINSLKRSRACSVGAVPGV  
 TKFMQEVYLDKFI RLLDAPGIVPGPNSEVGTILRNCIHVQKLADPVTPVETILQRCNLEEISSYYGVSGF  
 QTTEHFLTAVAHRLGKKKGGVYSQEQA AKAVLADWVSGKISFYTLPPPTHLP THLSAEIVKEMTEVFD  
 IEDTEHANEDTMECLAVGESDELLGDMDPQEMEVRWLHSPLVKIADAIENRSTVYKIGNLTGYCTKPNRN  
 QMGWPKRNVDDHCPQNNRVVEVSSVDRRPLQRILETDPLQGGQALASALKNKKKLQKRSDKIATKLSDS  
 MMSMLDLSGNSDDCAGD

**TRTRPLE** – GFP Tag – V

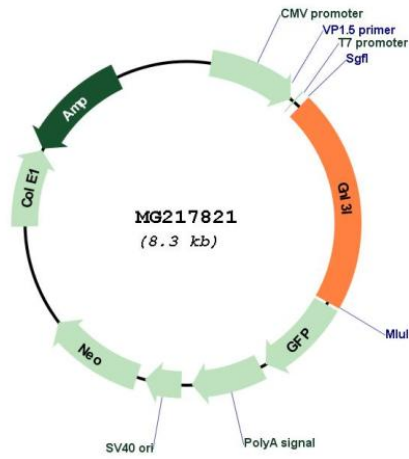
**Restriction Sites:**

Sgfl-MluI

Cloning Scheme:



Plasmid Map:



ACCN: NM\_198110  
ORF Size: 1731 bp

<b>OTI Disclaimer:</b>	The molecular sequence of this clone aligns with the gene accession number as a point of reference only. However, individual transcript sequences of the same gene can differ through naturally occurring variations (e.g. polymorphisms), each with its own valid existence. This clone is substantially in agreement with the reference, but a complete review of all prevailing variants is recommended prior to use. <a href="#">More info</a>
<b>OTI Annotation:</b>	This clone was engineered to express the complete ORF with an expression tag. Expression varies depending on the nature of the gene.
<b>Components:</b>	The ORF clone is ion-exchange column purified and shipped in a 2D barcoded Matrix tube containing 10ug of transfection-ready, dried plasmid DNA (reconstitute with 100 ul of water).
<b>Reconstitution Method:</b>	<ol style="list-style-type: none"><li>1. Centrifuge at 5,000xg for 5min.</li><li>2. Carefully open the tube and add 100ul of sterile water to dissolve the DNA.</li><li>3. Close the tube and incubate for 10 minutes at room temperature.</li><li>4. Briefly vortex the tube and then do a quick spin (less than 5000xg) to concentrate the liquid at the bottom.</li><li>5. Store the suspended plasmid at -20°C. The DNA is stable for at least one year from date of shipping when stored at -20°C.</li></ol>
<b>RefSeq:</b>	<a href="#">NM_198110.2</a> , <a href="#">NP_932778.1</a>
<b>RefSeq Size:</b>	4877 bp
<b>RefSeq ORF:</b>	1734 bp
<b>Locus ID:</b>	237107
<b>UniProt ID:</b>	<a href="#">Q6PGG6</a>
<b>Cytogenetics:</b>	X F3
<b>Gene Summary:</b>	Stabilizes TERF1 telomeric association by preventing TERF1 recruitment by PML. Stabilizes TERF1 protein by preventing its ubiquitination and hence proteasomal degradation. Does so by interfering with TERF1-binding to FBXO4 E3 ubiquitin-protein ligase. Required for cell proliferation. By stabilizing TRF1 protein during mitosis, promotes metaphase-to-anaphase transition. Stabilizes MDM2 protein by preventing its ubiquitination, and hence proteasomal degradation. By acting on MDM2, may affect TP53 activity. Required for normal processing of ribosomal pre-rRNA. Binds GTP (By similarity).[UniProtKB/Swiss-Prot Function]