

## Product datasheet for **MG217768**

### **Ksr1 (NM\_013571) Mouse Tagged ORF Clone**

#### **Product data:**

Product Type:	Expression Plasmids
Product Name:	Ksr1 (NM_013571) Mouse Tagged ORF Clone
Tag:	TurboGFP
Symbol:	Ksr1
Synonyms:	AW492498; B-KSR1; D11Bhm183e; D11Bhm184e; hb; Ksr; mKSR1; RSU2
Mammalian Cell Selection:	Neomycin
Vector:	pCMV6-AC-GFP (PS100010)
E. coli Selection:	Ampicillin (100 ug/mL)



[View online »](#)

**ORF Nucleotide Sequence:**

>MG217768 representing NM\_013571  
 Red=Cloning site Blue=ORF Green=Tags(s)

TTTTGTAATACGACTCACTATAGGGCGGCCGGGAATTCGTCGACTGGATCCGGTACCGAGGAGATCTGCC  
 GCC**CGGATCGCC**

ATGGATAGAGCGCGTTGCGCGCGGCAGCGATGGCGGAGAAAAAGGAGGGCGCGCGGGGGCGCCGCGG  
 CGGACGGGGGCGCAGGGGCCCGCTCAGCCGGGCGCTGCAGCAGTGCGGCCAGCTGCAGAAGCTCATCGA  
 TATCTCCATCGGCAGTCTGCGCGGGCTGCGCACCAAGTGCTCAGTGTCTAACGACCTCACACAGCAGGAG  
 ATCCGGACCCTAGAGGCAAAGCTGGTGAATACATTTGCAAGCAGCAGCAGAGCAAGCTTAGTGTGACCC  
 CAAGCGACAGGACCGCCGAGCTCAACAGCTACCCACGCTTCAGTGACTGGCTGTACATCTTCAACGTGAG  
 GCCTGAGGTGGTGCAGGAGATCCCCAAGAGCTCACACTGGATGCTCTGCTGGAGATGGACGAGGCCAAA  
 GCCAAGGAGATGCTGCGGCGCTGGGGGGCCAGCACGGAGGAGTGCAGCCGCTACAGCAAGCCCTTACCT  
 GCCTTCGGAAGGTGACTGGCCTGGGAGGGGAGCACAAAATGGACTCAGGTTGGAGTTCAACAGATGCTCG  
 AGACAGTAGCTTGGGGCCTCCCATGGACATGCTTTCCTCGCTGGGCAGAGCGGGTCCAGCACTCAGGGA  
 CCCCCTTCCATCTCCGCTGTCGCGCCTGCCTGCCTCAGACTCTCCGGTCCCAGCCCTCAGTGAGGGCCTCT  
 CGGACTCCTGTATCCCCTTGACACCAGCGGCCGGCTGACCCCCGGGCCCTGCACAGCTTCATCACGCC  
 CCCTACCACACCCAGCTACGACGGCACGCCAAGCTGAAGCCACCAAGGACACCCCAACCGCAAGCCGC  
 AAGGTCTTCCAGCTGCTCCCAGCTTCCCACACTCACACGGAGCAAGTCCCACGAGTCCCAGCTGGGAA  
 ACCGAATCGACGACGTCACCCCGATGAAGTTTGAACCTCCATGGATCCCACAGCTGGTACGAAGGGA  
 TATCGGGCTCTCGGTGACGCACAGGTTCTCCACAAAGTCATGGTTGTACAGGTGTGCAACGTGTGCCAG  
 AAGAGCATGATTTTTGGCGTGAAGTGCAAACTGCAGGTTAAAATGCCATAACAAGTGCACAAAGGAAG  
 TCCCCGCTCAGGATCACCTTCTCCACTGGCCAGGTTTCGGAGGACAGAGTGTCCCGTCAGATGAT  
 CAACAACCCAGTGACAGAGCAGCAGAGCCCAATTTTGAACCTTCCCAGGCCCTGACAAAGAAGGAG  
 CACCCTCCAGCCATGAACCTGGACTCCAGCAGCAACCCATCCTCCACCAGTCTCCACACCCTCATCGC  
 CGGCACCTTCTGACCTCATCTAATCCCTCCAGTGCCACCACGCCTCCCAACCCGTACCTGGCCAGCG  
 GGACAGCAGGTTGAGCTTCCAGACATTTAGCCTGTTCTCAGGCAGCCCGCTGTCCAGCACAGCCGAC  
 AGTACACGGCTCGACGACCAGCCAAAACAGATGTGCTAGGTGTTACGAAGCAGAGGCTGAGGAGCCTG  
 AGGCTGGCAAGTCAGAGGACAGGATGACGAGGAGGATGAGGTGGACGACCTCCCAGCTCCCGCCGGCC  
 CTGGAGGGGCCCATCTCTCGAAAGGCCAGCCAGACCAGGTTTACCTGCAAGAGTGGGACATCCCCTTT  
 GAACAGGTGGAAGTGGGCGAGCCATTGGACAGGTCGCTGGGGCCGGTGCACCAGGCCGTTGGCATG  
 GCGAGGTGGCCATTCGGCTGCTGGAGATGGACGGCCACAATCAGGACCACCTGAAGCTGTTCAAGAAAGA  
 GGTGATGAACTACCGGCAGACGCGGCATGAGAAGTGGTGTCTTTCATGGGGCCTGCATGAACCCACCT  
 CACCTGGCCATTATCACCAGCTTCTGCAAGGGGCGGACATTGCATTATTTCGTGAGGGACCCCAAGAGCT  
 CTCTGGACATCAATAAGACTAGGCAGATCGCCCAGGAGATCATCAAGGGCATGGGTTATCTTTCATGCAAA  
 AGGCATCGTGACAAGGACCTCAAGTCCAAGAATGTCTTCTATGACAACGGCAAAGTGGTCATCACAGAC  
 TTCGGGCTGTTTGGGATCTCGGGTGTGGTCCGAGAGGAACGGCGCGAGAACCAACTGAAACTGTCACATG  
 ACTGGCTGTGCTACCTGGCCCCGAGATCGTACGAGAAATGATCCCGGGCGGGACGAGGACCAGCTGCC  
 CTTCTCCAAAGCAGCCGATGTCTATGCATTCCGGACTGTGTGATGAACTACAGGCAAGAGACTGGCCC  
 TTTAAGCACCCAGCTGCTGAGGCCTTGATCTGGCAGATTGGAAGTGGGGAAGGAGTACGGCGCGTCTCTGG  
 CATCCGTCAGCCTGGGGAAGGAAGTCCGGCAGATCCTGTCTGCCTGCTGGGCTTTCGATCTGCAGGAGAG  
 ACCCAGCTTACGCTGCTGATGGACATGCTGGAGAGGCTGCCAAGCTGAACCGGCGGCTCTCCACCCT  
 GGGCACTTTTGAAGTCCGGCTGACATTAACAGCAGCAAAGTCATGCCCGCTTTGAAAGGTTGGCCTGG  
 GGACCCTGGAGTCCGGTAATCCAAGATG

**ACGGTACGCGGCCGCTCGAG** - GFP Tag - GTTTAA

**Protein Sequence:** >MG217768 representing NM\_013571  
 Red=Cloning site Green=Tags(s)

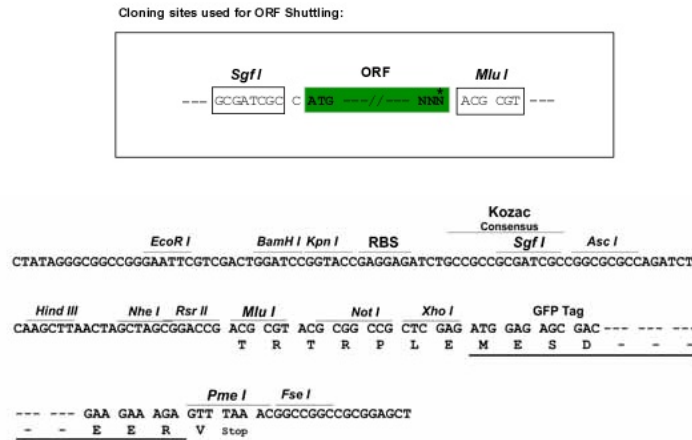
```
MDRAALRAAAMGEKKEGGGGAAADGGAGAAVSRALQCCGQLQKLIDISIGSLRGLRTKCSVSNLDTQQE
IRTLEAKLVKYICKQQQSKLSVTPSDRTAELNSYPRFSDWLYIFNVRPEVVQEIPELTLDALLEMDEAK
AKEMLRRWGASTEEC SRLQQAL TCLRKVTGLGGEHKMDSGWSSTDARDSSLGPPMDMLSSLGRAGASTQG
PRISIVSALPASDSPVPLSEGLSDSCIPLHTSGRLTPRALHSFITPPTTPQLRRHAKLKPRTPPPPSR
KVFQLLPSFPTLTRSKSHESQLGNRIDDVTPMKFELPHGSPQLVRRDIGLSVTHRFSTKSWLSQVCNVCQ
KSMIFGVKCKHCRLKCHNKCTKEAPACRITFLPLARLRRTESVPSDINNVDRAAEPHFGTLPKALTKKE
HPPAMNLDSSSNPSSTTSSTPSSPAPFLTSSNPSSATTPPNPSGQRDSRFSPDISACSQAAPLSSTAD
STRLDDQPKTDVLGVHEAEAEPEAGKSEAEDDEEVEDDLPSRRPWRGPI SRKASQTSVYLQEWDI PF
EQVELGEPIGQGRWRVHRGRWHGEVAIRLLEMDGHNQDHLKLFKKEVMNYRQTRHENNVLFMGACMNPP
HLAIIITFCCKGRTLHSFVRDPKTSLDINKTRQIAQEIIKGMGYLHAKGIVHKDLKSKNVFYDNGKVVITD
FGLFGISGVVREERRENQLKLSHDWLCYLAPEIVREMIPGRDEDQLPFKAADVYAFGTVYELQARDWP
FKHQPAEALIWQIGSGEGVRRVLASVSLGKEVGEILSACWAFDLQERPSFLLMDMLERLPKLNRRLSHP
GHFWKSADINSSKVMRFRERFGLGTLESGNPKM
```

TRTRPLE - GFP Tag - V

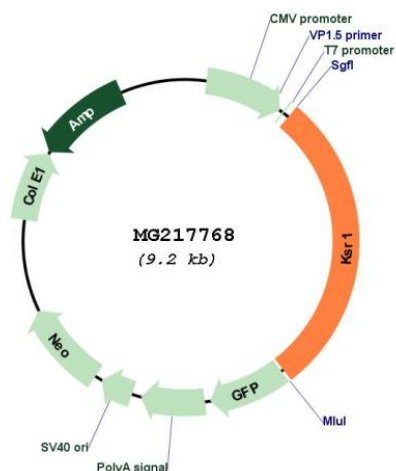
**Restriction Sites:**

SgfI-MluI

**Cloning Scheme:**



## Plasmid Map:



ACCN: NM\_013571

ORF Size: 2619 bp

OTI Disclaimer: The molecular sequence of this clone aligns with the gene accession number as a point of reference only. However, individual transcript sequences of the same gene can differ through naturally occurring variations (e.g. polymorphisms), each with its own valid existence. This clone is substantially in agreement with the reference, but a complete review of all prevailing variants is recommended prior to use. [More info](#)

OTI Annotation: This clone was engineered to express the complete ORF with an expression tag. Expression varies depending on the nature of the gene.

Components: The ORF clone is ion-exchange column purified and shipped in a 2D barcoded Matrix tube containing 10ug of transfection-ready, dried plasmid DNA (reconstitute with 100 ul of water).

Reconstitution Method:

1. Centrifuge at 5,000xg for 5min.
2. Carefully open the tube and add 100ul of sterile water to dissolve the DNA.
3. Close the tube and incubate for 10 minutes at room temperature.
4. Briefly vortex the tube and then do a quick spin (less than 5000xg) to concentrate the liquid at the bottom.
5. Store the suspended plasmid at -20°C. The DNA is stable for at least one year from date of shipping when stored at -20°C.

RefSeq: [NM\\_013571.3](#)

RefSeq Size: 4087 bp

RefSeq ORF: 2622 bp

Locus ID: 16706

UniProt ID: [Q61097](#)

**Cytogenetics:** 11 46.74 cM

**Gene Summary:** Scaffolding protein that is part of a multiprotein signaling complex. Promotes phosphorylation of Raf family members and activation of downstream MAP kinases (PubMed:10409742, PubMed:12932319, PubMed:21102438). Promotes activation of MAPK1 and/or MAPK3, both in response to EGF and to cAMP (PubMed:21102438). Does not have kinase activity by itself (Probable).[UniProtKB/Swiss-Prot Function]