

## Product datasheet for **MG217737**

### Arhgap24 (NM\_029270) Mouse Tagged ORF Clone

#### Product data:

Product Type:	Expression Plasmids
Product Name:	Arhgap24 (NM_029270) Mouse Tagged ORF Clone
Tag:	TurboGFP
Symbol:	Arhgap24
Synonyms:	0610025G21Rik
Mammalian Cell Selection:	Neomycin
Vector:	pCMV6-AC-GFP (PS100010)
E. coli Selection:	Ampicillin (100 ug/mL)



[View online »](#)

**ORF Nucleotide Sequence:**

>MG217737 representing NM\_029270  
 Red=Cloning site Blue=ORF Green=Tags(s)

TTTTGTAATACGACTCACTATAGGGCGGCCGGGAATTCGTCGACTGGATCCGGTACCGAGGAGATCTGCC  
 GCC**CGATCGCC**

ATGGAGGAAAGGTGTGAATCCACAGAGAGCCCCAAGGCCAAGGGCGGCAGAACACCAAGTGTGGGTGGC  
 TGAGGAAGCAAGGCGGCTTTGTCAAGACTTGGCACACCCGGTGGTTTGTGCTTAAGGGGGATCAGCTTTA  
 TTATTTCAAAGATGAAGATGAAACCAAGCCCTTGGGGACTATTTTTCTGCATGGAATAAAGTCATTGAG  
 CATCCGTGCAATGAAGAAAACCCAGGAAAGTTCCTTTTTCGAAAGTAGTTCAGGAGGTGAACGAGATCGGA  
 TGACAGCCAATCATGAGAGCTATCTCCTCATGGCGAGCACCCAGAATGACATGGAAGACTGGGTGAAGTC  
 CATCCGCCGAGTCATATGGGGACCTTTTGGAGGAGGTATTTTTGGACAGAAAAGTGAAGACACAGTCCGA  
 TATGAAAAGAGGTACGGGAACCGCTGGCACCCATGCTGGTGGAGCAGTGTGTGGACTTCATCCGACAGC  
 GGGGGCTGAAGGAAGAAGCCCTCTCCGGCTGCCGGGCCAGGCGAACCTGGTCAAGGAGCTCCAGGATGC  
 GTTCGACTGTGGAGAGAAGCCCTCTTCGACAGCAACACCGACGTCCACACTGTGGCATCCCTGCTGAAA  
 TTGTATCTCCGAGAACTCCAGAGCCCGCTGTTCTTATGCAAAGTATGAAGACTTTTTGTCTGCGCCA  
 CGCTGCTCAGTAAGGAGGAAGAAGCAGGTGTTAAGGAGCTAATGAAACAAGTGAAGAGTTTGCTGTGGT  
 TAACTACAACCTTCTGAAGTACATTTGCAGGTTCTGGATGAAGTGCAGTCCATTTCAGGAGTTAAACAAG  
 ATGAGCGCACAGAAGTGGCAACTGTCTTCGGTCTAACATCCTGCGCCAAAGGTGGAAGATCCCTTGA  
 CCATCATGGAGGGCACTGTGGTGGTCCAGCAGTAAATGTCAGTGTGATTAGTAAGCATGATCGACTCTT  
 CCCCAAAGACACAGAACCACAAAGCAAGCCCCAAGACGGCCCGAACAGCAATAATAACGATGGTCATAAG  
 AAAGCCACCATGGGTGAGTTGCAGAACAAGAAAAACAATAATACCAAGGAGAGCCCGTCAAGAGGTGCT  
 CTTGGGACAAGCCTGAATCCCCCAGAGAAGCAGCGTGGACAATGGATCCCCACAGCCCTATCAGGCAG  
 CAAAACCAACAGCCCAAGGAACAGTATCCACAAGCTGGATATTTCCAGGAGCCCCCTCTCATGGTCAAA  
 AAGAACCAGCCTTCAACAAGGGCAGTGGGATTGTCACCAACGGGTCAATCAGCAGCAGCAATGCAGAAG  
 GTGTGAGAAGCCTCAAACACTCCTAATGGGAGTTTACAAGCCAGAAGGACCTCTTCACTGAAGAGTTC  
 TGGTACCAAAAATGGGCACTCACAGTGTACAGAATGGCACTGTCCGCATGGGTATTCTGAACACTGACACA  
 CTAGGGAATTCCTTGAACGGCCGGAGCATGAGTTGGCTGCCCAATGGCTATGTGACCCTGAGAGATAACA  
 AACAGAAGGAGCCAGCAGGAGAGTCAGGCCAGCACAACAGACTCTCCACCTACGACAATGCCACCAGCA  
 GTTCTCCTCGATGAGCCTCGACGACAAGCACAGCGTGGACAGTGCCACGTGGTCCACCTCCTCCTGCGAA  
 ATCTCCCTCCCTGAGAACTCCAATTCCTGCGCTCCTCTACCACCAGTGCCAGAGCAAGACTTCTACG  
 TTGGGAACCTTTGAGGACCTGTTTTAGACGGCCCACTCAGGATGATCTTTCCATCCCGGGGACTATGA  
 GAACAAAAGTGACCGCAGGAGCGTAGGGGGCCGAAGCAGCCGCGCCACGAGCAGCAGCGATAACAGCGAG  
 ACATTCGTGGGCAACACCAGCAGCAACCACAGTCACTTCACAGTTTAGTTTCCAGCCTGAAGCAGGAGA  
 TGACCAAACAGAAGATCGAGTATGAGTCCAGGATAAAAAGCTTAGAACAGCGGAATTTGACTTTGGAAAC  
 GGAAATGCTGAGCCTCCATGACGAAGTGGATCAAGAGAGGAAAAAGTTCCACCATGATAGAAATCAAGATG  
 AGAAACGCTGAGCGCGCAAAGGAGGATGCGGAGAAAAGGAACGACATGCTCCAGAAGGAGATGGAGCAGT  
 TCTTCTCCACATTTGGAGACCTGACAGTGAACCCAGGAGAAGCGAGAGAGGAAACACAATCTGGATCCA  
 G

**ACGCGT**ACGCGGCCGCTCGAG - GFP Tag - GTTTAA

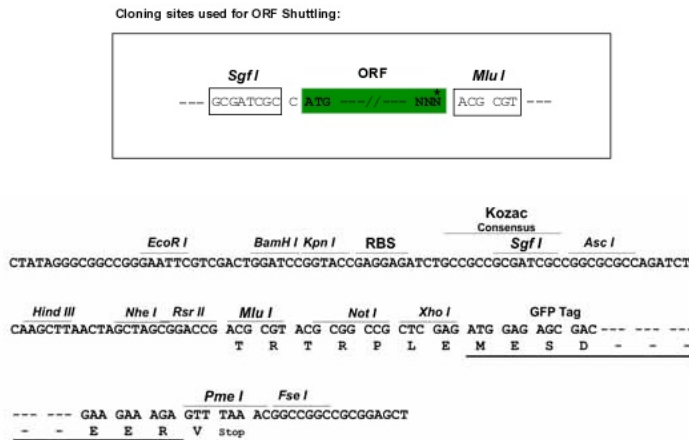
**Protein Sequence:** >MG217737 representing NM\_029270  
 Red=Cloning site Green=Tags(s)

```
MEERCESTESPQGGQRQNTKCGWLRKQGGFVKTWHTRFVLKGDQLYYFKDEDETKPLGTIFLHGNKIVIE
HPCNEENPGKFLFEVVPGGGERDRMTANHESYLLMASTQNDMEDWVKSIRRVIWGPFGGGIFGQKLEDTVR
YEKRYGNRLAPMLVEQCVDIFIRQRGLKEEGLFRLPGQANLVKELQDAFDCGEKPSFSDNTDVHTVASLLK
LYLRELPEPVVYAKYEDFLSCATLLSKEEEAGVKELMKQVKSLPVVNYNLLKYICRFLDEVQSYSGVVK
MSAQNLAIVFGPNILRPKVEDPLTIMEGTVVVQQLMSVMI SKHDRLF PKDTEPQSKPQDGPNSNNNDGHK
KATMGQLQNKENNTKESPVRRCSWDKPESQSRSSVDNGSPTALSGSKTNSPRNSIHKLDISRSPPLMVK
KNPAFNKSGSIVTNGSFSSSNAEGVEKPQTTPNGSLQARRTSSLKSSGTKMGTHSVQNGTVRMGILNTDT
LGNSLNGRSMWLPNGYVTLRDNKQKEPAGESGQHNLSTYDNVHQFSSMSLDDKHSVDSATWSTSSCE
ISLPENSNSCRSSTTTCPEDFYVGNFEDPVLDPGPPQDDL SHPGDYENKSDRRSVGGRSSRATSSSDNSE
TFVGNSTSSNHSALHSLVSSLKQEMTKQKIEYESRIKSLEQRNL TLETEMLSLHDEL DQERKKFTMIEIKM
RNAERAKEDAERNDMLQKEMEQQFFSTFGDLTVEPRRSERGNTIWIQ
```

TRTRPLE - GFP Tag - V

**Restriction Sites:** SgfI-MluI

**Cloning Scheme:**



**ACCN:** NM\_029270

**ORF Size:** 2241 bp

**OTI Disclaimer:** The molecular sequence of this clone aligns with the gene accession number as a point of reference only. However, individual transcript sequences of the same gene can differ through naturally occurring variations (e.g. polymorphisms), each with its own valid existence. This clone is substantially in agreement with the reference, but a complete review of all prevailing variants is recommended prior to use. [More info](#)

**OTI Annotation:** This clone was engineered to express the complete ORF with an expression tag. Expression varies depending on the nature of the gene.

**Components:** The ORF clone is ion-exchange column purified and shipped in a 2D barcoded Matrix tube containing 10ug of transfection-ready, dried plasmid DNA (reconstitute with 100 ul of water).

**Reconstitution Method:**

1. Centrifuge at 5,000xg for 5min.
2. Carefully open the tube and add 100ul of sterile water to dissolve the DNA.
3. Close the tube and incubate for 10 minutes at room temperature.
4. Briefly vortex the tube and then do a quick spin (less than 5000xg) to concentrate the liquid at the bottom.
5. Store the suspended plasmid at -20°C. The DNA is stable for at least one year from date of shipping when stored at -20°C.

**RefSeq:** [NM\\_029270.2](#), [NP\\_083546.2](#)

**RefSeq Size:** 3353 bp

**RefSeq ORF:** 2244 bp

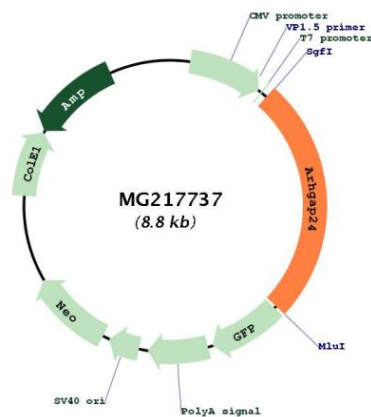
**Locus ID:** 231532

**UniProt ID:** [Q8C4V1](#)

**Cytogenetics:** 5 E5

**Gene Summary:** Rho GTPase-activating protein involved in cell polarity, cell morphology and cytoskeletal organization. Acts as a GTPase activator for the Rac-type GTPase by converting it to an inactive GDP-bound state. Controls actin remodeling by inactivating Rac downstream of Rho leading to suppress leading edge protrusion and promotes cell retraction to achieve cellular polarity. Able to suppress RAC1 and CDC42 activity in vitro. Overexpression induces cell rounding with partial or complete disruption of actin stress fibers and formation of membrane ruffles, lamellipodia, and filopodia. Isoform 2 is a vascular cell-specific GAP involved in modulation of angiogenesis (By similarity).[UniProtKB/Swiss-Prot Function]

### Product images:



Circular map for MG217737