

Product datasheet for **MG217717**

Pde1c (NM_001159957) Mouse Tagged ORF Clone

Product data:

Product Type:	Expression Plasmids
Product Name:	Pde1c (NM_001159957) Mouse Tagged ORF Clone
Tag:	TurboGFP
Symbol:	Pde1c
Mammalian Cell Selection:	Neomycin
Vector:	pCMV6-AC-GFP (PS100010)
E. coli Selection:	Ampicillin (100 ug/mL)



[View online »](#)

ORF Nucleotide Sequence:

>MG217717 representing NM_001159957
 Red=Cloning site Blue=ORF Green=Tags(s)

TTTTGTAATACGACTCACTATAGGGCGGCCGGAATTCGTCGACTGGATCCGGTACCGAGGAGATCTGCC
 GCC**CGGATCGCC**

ATGGCCTACAGTATTCAGAGGAAATATAAGAAAACGTCCAGAGGTTACGGTCTTTGGTCAAGCAATTAG
 AACGAGGAGAGGCTCTGTGGTAGACCTTAAGAAGAATCTGGAATATGCAGCCACAGTGCTTGAATCTGT
 ATATATTGATGAAACAAGGCGACTGCTGGATACAGAGGATGAGCTTAGTGACATTCAATCAGATGCTGTG
 CCTTCAGAAGTTCGGGATTGGCTGGCCTCCACCTTACACGCGCAGATGGGGATGATGCTTAGGAGAAGTG
 ATGAGAAGCCCAGGTTCAAGAGCATCGTCCATGCGGTGCAAGCTGGGATATTTGTGGAAAGAATGTACAG
 ACGGACATCAAACATGGTTGGGCTGAGCTATCCACCGGCTGTAATCGATGCATTGAAGGATGTGGATACG
 TGGTCCTTCGATGCTTTTCCCTCAATGAGGCCAGTGGAGATCATGCACTGAAGTTCATTTTCTATGAAT
 TACTCACAGTTATGACCTGATCAGCCGTTTTAAGATACCGATTTCTGCCTTGTCTCATTGTGGAGGC
 CCTCGAAGTGGGTTACAGCAAGCACAAAATCCTTACCATAACCTGATGCATGCAGCTGAGTCCACACAG
 ACTGTGCATTACCTCCTTTATAAGACAGGAGTAGCAAACCTGGCTGACAGAGCTGGAGATCCTTTGCAATAA
 TCTTTTCGGCTGCCATCCATGACTATGAACATACTGGAACACAAAACATTTCCACATTCAGACTCGGTC
 AGATCCAGCTATCCTGTACAATGACAGATCTGTCTGGAGAACCACCTGAGTGCAGCCTACCGCCTT
 CTGCAGGAAGACGAAGAGATGAATTTCTGGTTAACCTCTCAAAGGATGACTGGAGGGAGTTTCAAACCTT
 TGGTTATTGAGATGGTAATGGCCACAGATATGTCTGTCAATTCAGCAAATCAAAGCCATGAAGACAGC
 CCTGCAGCAACCAAGCAATTGAGAAGCCGAAAGCCTTATCCCTCATGTTACACACAGCAGACATCAGT
 CATCCTGCGAAAGCATGGGACCTGCACCACCGCTGGACCATGTCTCTCTGGAGGAGTTCTTTAGACAGG
 GTGACAGAGAAGCAGAGCTGGGGCTGCCATTTTCTCCTTTGTGACAGAAAGTCAACCATGGTTGCTCA
 GTCACAAGTGGGTTTTATTGACTTCATTGTGGAGCCACCTTCACTGTGCTCACGGACATGACCGAGAAG
 ATTGTGAGTCCATTAATTGACGAAAGCTCCAGACTGGTGGGACAGGGCAGAGGAGATCAAGTTTGAACA
 GCATCAACTCATCAGATGCAAAGCGATCCGGTGTCAAGAGTTCTGGGTCAGATGGAAGTGTCCCATCAA
 CAATTCTGTATTCTGTGACTATAAGAGTTTTAAAGCCACTTGGACTGAGGTGGTGCAGATCAATCGG
 GAGCGGTGGCGAGCCAAGGTACCCAAAGAAGAAAAGCCAAAGAAGGAAGCTGAAGAGAAGGCTCGCCTGG
 CTGCTGAGGAAAAGCAAAGGAAATGGAAGCCAAAAGCCAAGCTGAACAAGGCACAACCAGCAAAGGCGA
 GAAAAAGACATCAGGAGAAGCCAAAAGTCAAGTCAATGGAACACGCAAGGGTGATAACCCCTCGTGGGAAG
 AACTCAAAGGAGAAAAGGCAGGCGAAAAGCAGCAGAACGGTGACTTGAAGACGGTAAAAATAAGGCAG
 ACAAGAAGGATCACTCCAACACCGGAAATGAGTCAAAGAAAACAGATGATCCAGAGGAG

ACGCGTACGCGGCCGCTCGAG - GFP Tag - GTTTAA

Protein Sequence:

>MG217717 representing NM_001159957
 Red=Cloning site Green=Tags(s)

MAYSIQRKYKKSQRLRSLVKQLERGEASVVDLKKNLEYAATVLESVYIDETRRLDTEDELSDIQSDAV
 PSEVRDWLASTFTRQMGMLRRSDEKPRFKSIVHAVQAGIFVERMYRRTSNMVGLSYPPAVIDALKDQVDT
 WSFDVFLNEASGDHALKFIFYELLTRYDLISRFKIPISALVSFVEALEVGYSKHKNPYHNLMAADVTQ
 TVHYLLYKTGVANWLTELEIFAIIFSAIHDYEHTGTTNHFHIQTRSDPAILYNDRSVLENHHLAAAYRL
 LQDEEMNILVNLKDDWREFRTLVIEMVMATDMSCHFQQIKAMKTALQQPEAIEKPKALSLMLHTADIS
 HPAKAWDLHHRWTMSLLEEFFRQGDREAEGLPFSPLCDRKSTMVAQSQVGFIDFIVEPTFTVL TDMTEK
 IVSPLIDESSQTGGTGQRRSSLNSINSSDAKRSGVKSSGSDGSAPINNSVIPVDYKSFKATWTEVVQINR
 ERWRKVPKEEKAKKEAEKARLAAEEKQKEMEAKSQAEQGTTSKGEKKTSGEAKSQVNGTRKGDNPRGK
 NSKGEKAGEKQNGDLKDGKNKADKKDHSNTGNESKKTDDPEE

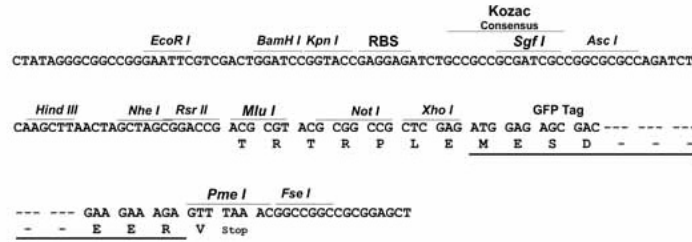
TRTRPLE - GFP Tag - V

Restriction Sites:

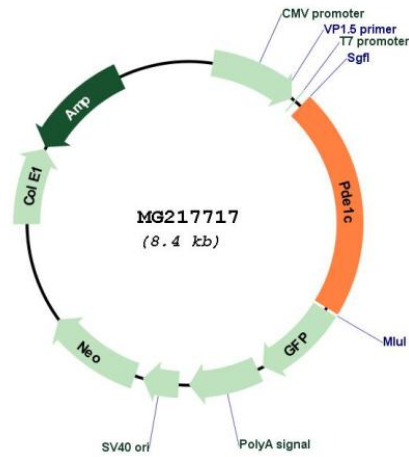
Sgfl-MluI

Cloning Scheme:

Cloning sites used for ORF Shutting:



Plasmid Map:



ACCN:

NM_001159957

ORF Size:	1809 bp
OTI Disclaimer:	The molecular sequence of this clone aligns with the gene accession number as a point of reference only. However, individual transcript sequences of the same gene can differ through naturally occurring variations (e.g. polymorphisms), each with its own valid existence. This clone is substantially in agreement with the reference, but a complete review of all prevailing variants is recommended prior to use. More info
OTI Annotation:	This clone was engineered to express the complete ORF with an expression tag. Expression varies depending on the nature of the gene.
Components:	The ORF clone is ion-exchange column purified and shipped in a 2D barcoded Matrix tube containing 10ug of transfection-ready, dried plasmid DNA (reconstitute with 100 ul of water).
Reconstitution Method:	<ol style="list-style-type: none">1. Centrifuge at 5,000xg for 5min.2. Carefully open the tube and add 100ul of sterile water to dissolve the DNA.3. Close the tube and incubate for 10 minutes at room temperature.4. Briefly vortex the tube and then do a quick spin (less than 5000xg) to concentrate the liquid at the bottom.5. Store the suspended plasmid at -20°C. The DNA is stable for at least one year from date of shipping when stored at -20°C.
RefSeq:	NM_001159957.1 , NP_001153429.1
RefSeq Size:	8310 bp
RefSeq ORF:	1812 bp
Locus ID:	18575
Cytogenetics:	6 27.65 cM
Gene Summary:	Calmodulin-dependent cyclic nucleotide phosphodiesterase with a dual-specificity for cAMP and cGMP, which are key regulators of many important physiological processes (PubMed:8810348). Exhibits high affinity for both cAMP and cGMP (By similarity). Modulates the amplitude and duration of the cAMP signal in sensory cilia in response to odorant stimulation, hence contributing to the generation of action potentials. Regulates smooth muscle cell proliferation. Regulates the stability of growth factor receptors, including PDGFRB (Probable).[UniProtKB/Swiss-Prot Function]