

Product datasheet for **MG217700**

Sestd1 (NM_175465) Mouse Tagged ORF Clone

Product data:

Product Type:	Expression Plasmids
Product Name:	Sestd1 (NM_175465) Mouse Tagged ORF Clone
Tag:	TurboGFP
Symbol:	Sestd1
Synonyms:	1500031J16Rik; A930010O20; Solo/Trio8
Mammalian Cell Selection:	Neomycin
Vector:	pCMV6-AC-GFP (PS100010)
E. coli Selection:	Ampicillin (100 ug/mL)



[View online »](#)

ORF Nucleotide Sequence:

>MG217700 representing NM_175465
 Red=Cloning site Blue=ORF Green=Tags(s)

TTTTGTAATACGACTCACTATAGGGCGGCCGGAATTCGTCGACTGGATCCGGTACCGAGGAGATCTGCC
 GCC**CGATCGCC**

ATGGAGGCCTCGGTGATATTGCCATTCTGAAGAAGAAGCTGGCCTTCCTTTTCAGGAGGAAAGGACAGAC
 GCAGTGGACTCATCTTGACAATTCGCTGTGCCTTGAGCAGACAAGTATGGATGAGCTGAGTGCACTTT
 GGATTATCTACTCAGCATTCCAAGTGAGAAATGTAAGGCCAGAGGATTCCTGTGATCGTGGATGGCAGG
 AAGTCTCAGTGGAAATGGTGAAGACAGTTGTCTTAATGCTGCAGAATGTTGTTCCAGCCGAGGTATCCC
 TTGTTTGTGAGTGAAGCCAGATGAATTCTGGGATAAGAAAGTAACACACTTTTGTGTTTGGAAAGAAAA
 GGACAGACTTGGCTTTGAGGTTATTTAGTGTCCGCAATAAGTTGACGCGTTACATAGAGCCATGCCAG
 TTGACAGAAGACTTTGGTGGGAGTCTCACCTATGACCACATGGACTGGCTGAATAAGAGGCTGGTCTTTG
 AGAAGTTTACAAAGGAGTCTACATCATTGCTAGATGAACCTGCTCTGATTAACAATGGAAGTGATAAGGG
 GAATGAGCAGGAGAAAGAAAGGCTGTGGATTTAACTTTCTCCATCCGTTGATCCTGAGACGGTCTCT
 CAGACAGGGCATGAGTTGTTATCTGAATTACAGCAGCGTCGATTTAATGGCTCCGACGGAGGGTCTCGT
 GGTCTCCTATGGATGACGAGCTGCTGGCACAGCCGAGGTTATGAAGTTGCTGGACTCACTCCGGGAGCA
 GTACACGCCTACCAGGAAGTCTGCAGGCAGCGCAGTAAGCGCACACAGCTGGAGGAGATCCAGCAGAAG
 GTGATGCAGGTTGTGAACCTGGCTTGAAGGGCCTGGATCTGAGCAACTGAGAGCACAGTGGGGCATTGGTG
 ACTCGATCAGGGCCTCCCAGGCCCTGCAACAGAAGCATGAGGAGATCGAGAGCCAACACAGCGAGTGGTT
 CGCAGTATACGTGGAGCTTAACACAGCAGATTGCAGCACTTTAAACGCTGGAGACGAGGAAGATCTGTG
 GAGTTGAAGTCTCTACAGCAACAGCTTAGCGACGTTTGCATCGACAGGCCAGTCAGCTAGAATTTAGGC
 AAAACCTCCTGCAGGCAGCTTTGGAATTCATGGTGTGGCCCAAGATTTGCTCAGCAGTTGGACGGCTT
 ATTAGGGATGTTGTGCGTAGATGTAGCACCAGCTGATGGAGCATCGATTACGAAACTTTAAACTGCTT
 GAAGAGAAGCTGAAAAGTGTGATGTAGGATTGCAAGGCTTGCAGAAAAAGGTCAAGGTCTCCTGGATC
 AGATCTCCAACAGGCTTCTGGCCTATGGCAAGGATGTAACCTATTGAAAATAAAGAAAACGTGGACCA
 CATACAAGGAGTGATGGAAGACATGCAACTTAGGAAACAAAGATGTGAGGACATGGTAGATGTGCGGAGG
 CTGAAGATGCTTCAGATGGTGCAGTTGTTAAGTGTGAAGAGGATGCTTCACAGGCAGTAGAATGGCTGA
 GTGAACCTCTGGATGCCCTGCTGAAGACCCATATCAGGCTGGGTGACGATGCTCAGGAAACAAAGTTTT
 ACTGGAAAAACACAGAAAATTTGTCGATGTTGCCAGAGTACTTACGACTATGGCAGACAGCTGCTGCAG
 GCCACAGTTGACTGTGCCAGTCTCTGCGCTGCACTTCCCGGTCCTCAGGGGACACACTTCTCGACTGA
 ACAGAGTGTGGAAGCAGTTTACAGTCGCATCTGAAGAGAGAGTGCACAGGTTGGAGATGGCTATTGCCTT
 TCACTCCAATGCCGAAAAGATTTTGAAGACTGCCAGAAAGAGCCTGAAGCAATGAATGATGAGGAACAG
 TTTGAGGAAATGAAGCAATTGAAAACTACTTCTGGATAGACTCACTATCCCCGTGGTTTACCCCGACG
 GAACTGAACAATTTTTGGAAGTCCAAGTGACATGGCTTCTACTGCAGAGCACATCAGGGACAGAATGAA
 ACTGGTCAGTCTCAAAGGCAGCAGCTGAGACATCCCGAATTGGTGACCACGGAGAGC

AGCGGACCGACGCGTACGCGGCCGCTCGAG - GFP Tag - GTTTAA

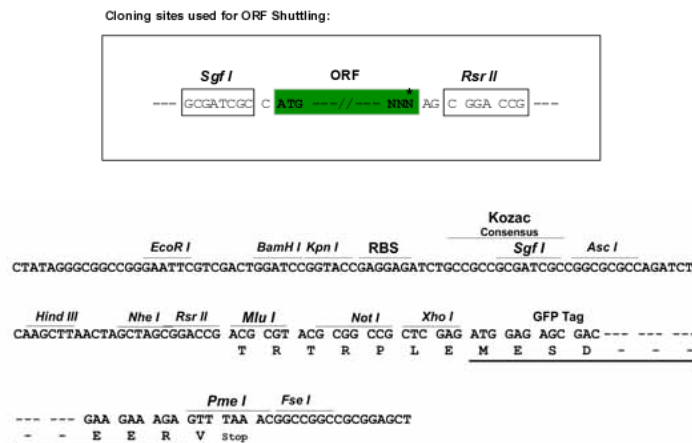
Protein Sequence: >MG217700 representing NM_175465
 Red=Cloning site Green=Tags(s)

```
MEASVILPILKKKLAFLSGGKDRRSLILTIPLCLEQTSMDLSVTLDYLLSIPSEKCKARGFTVIVDGR
KSQWNVVKTVVLMQNVVPAEVS LVCVVKPDEFWDKKVT HFCFWKEKDRLGFEVILV SANKLTRYIEPCQ
LTEDFGGSLTYDHMDWLNKRLVFEKFTKESTLLDELALINNGSDKGNEQEKERSVDLNF LPSVDPETVL
QTGHELLSELQRRFNGSDGGVSWSPMDEL LAQPQVMKLLDSLREQYTRYQEVC RQRSKRTQLEEIQQK
VMQVYVNWLEGPGEQLRAQWIGDSIRASQALQKHEEIESQHSEWFAYVELNQIAALLNAGDEEDLV
ELKSLQQLSDVCYRQASQLEFRQNL LQAALFHFHVAQDL SQQLDGLLGM LCVDVAPADGASIQTLKLL
EEKLSVDVGLQGLREKQGQLLDQISNQASWAYGKDVTIENKENVDHIQGYMEDMQLRKQRCEMVDVRR
LKMLQMVQLFKCEEDASQAVEWLS ELLDALLKTHIRLGDDAQETKVLLEKHRKFVDVAQSTYDYGRLLQ
ATVVLQSLRCTSRSSGDTLPRLNRVWKQFTVASEERVHREMAIAFHSNAEKILQDCPEEPEAMNDEEQ
FEEIEAIGKSLDLRLTIPVVYPDGTEQYFGSPSDMASTAEHIRDRMKLVSLKRQQLRHPELVTTES
```

SGPTRRRLE - GFP Tag - V

Restriction Sites: SgfI-RsrII

Cloning Scheme:



ACCN: NM_175465

ORF Size: 2088 bp

OTI Disclaimer: The molecular sequence of this clone aligns with the gene accession number as a point of reference only. However, individual transcript sequences of the same gene can differ through naturally occurring variations (e.g. polymorphisms), each with its own valid existence. This clone is substantially in agreement with the reference, but a complete review of all prevailing variants is recommended prior to use. [More info](#)

OTI Annotation: This clone was engineered to express the complete ORF with an expression tag. Expression varies depending on the nature of the gene.

Components: The ORF clone is ion-exchange column purified and shipped in a 2D barcoded Matrix tube containing 10ug of transfection-ready, dried plasmid DNA (reconstitute with 100 ul of water).

Reconstitution Method:

1. Centrifuge at 5,000xg for 5min.
2. Carefully open the tube and add 100ul of sterile water to dissolve the DNA.
3. Close the tube and incubate for 10 minutes at room temperature.
4. Briefly vortex the tube and then do a quick spin (less than 5000xg) to concentrate the liquid at the bottom.
5. Store the suspended plasmid at -20°C. The DNA is stable for at least one year from date of shipping when stored at -20°C.

RefSeq: [NM_175465.6](#), [NP_780674.1](#)

RefSeq Size: 8951 bp

RefSeq ORF: 2091 bp

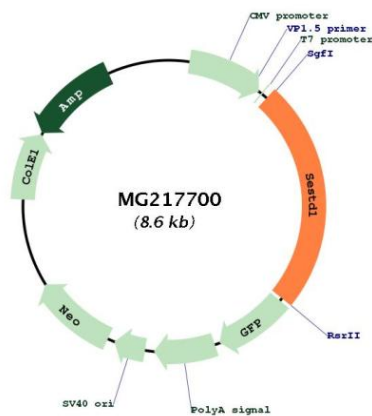
Locus ID: 228071

UniProt ID: [Q80UK0](#)

Cytogenetics: 2 C3

Gene Summary: May act as the primary docking protein directing membrane turnover and assembly of the transient receptor potential channels TRPC4 and TRPC5. Binds phospholipids such as phosphatidylinositol monophosphates, phosphatidylinositol diphosphates (PIP2s) and phosphatidic acid, but not less polar lipids including phosphatidylcholine, phosphatidylserine, and phosphatidylinositol. The binding to PIP2s is calcium dependent. Might be involved in the plasma membrane localization of CTNNB1 (By similarity).[UniProtKB/Swiss-Prot Function]

Product images:



Circular map for MG217700