

Product datasheet for **MG217689**

Dffa (NM_001025296) Mouse Tagged ORF Clone

Product data:

Product Type:	Expression Plasmids
Product Name:	Dffa (NM_001025296) Mouse Tagged ORF Clone
Tag:	TurboGFP
Symbol:	Dffa
Synonyms:	A330085O09Rik; DFF35; Dff45; ICAD; ICAD-L; ICAD-S
Mammalian Cell Selection:	Neomycin
Vector:	pCMV6-AC-GFP (PS100010)
E. coli Selection:	Ampicillin (100 ug/mL)
ORF Nucleotide Sequence:	>MG217689 representing NM_001025296 Red=Cloning site Blue=ORF Green=Tags(s)

TTTTGTAATACGACTCACTATAGGGCGGCCGGAATTCGTCGACTGGATCCGGTACCGAGGAGATCTGCC
GCC**CGATCGCC**

ATGGAGCTGTCGCGGGGAGCCAGCGCCCCAGACCCGGACGATGTCGGCCTCTCAAACCGTGTCTGCTAC
GCCGCAACCACAGCCGCGATCAGCACGGCGTGGCAGCCTCCAGTCTCGAGGAGCTGAGGAGCAAAGCCTG
TGAACCTCTGGCCATTGATAAGTCCCTGACGCGGATCACCTGGTCTGGCTGAGGACGGGACCATAGTG
GATGACGATGACTACTTCTCTGCCTTCCCAATACGAAGTTTGTGGCGTTGGCTGCAATGAGAAGT
GGATTTATAATGATTCCGATGGAGGGACGGCTTGGGTTTCCCAAGAGTCTTTGAGGCAGATGAGCCGGA
CAGCAGGGCAGGGTGAAGTGAAGAATGTGGCCAGGCAGCTGAAAGAAGATCTGTCCAGCATCATCCTG
CTGTCCAGAAAGAGGACCTCCAAGCGCTCATCGACATCCCATGTGCAGAGCTGGCTCAGGAACCTCTGCCAAA
GCTGTGCCACTGTCCAGGGGCTGCAGAGCACACTCCAGCAGGTGCTTGACCAGAGAGAGGAAGCCCGCCA
GTCCAAGCAGCTCCTGGAACCTTACCTCCAGGCCTTGAGAAAAGAGGGCAACATCTTGTCCAACCAGAAA
GAGTCCAAAGCTGCCCTCAGTGAAGAGCTGGATGCAGTTGACACAGGCGTCGGCAGAGAGATGGCTTCGG
AAGTGCTGCTCAGAAGCCAGATCCTTACCACACTGAAGGAGAAGCCTGCCCCAGAGCTGAGTTTATCTAG
TCAGGATTTGGAGTCTGTCTCCAAGGAGGATCCCAAAGCCCTGGCTGTGCTCTGAGCTGGGACATAAGG
AAGGCAGAGACAGTCCAGCAGGCTGCACCAGGAGCTCGCCCTGCGGCTGCAGCAAGTGCAGAGCTTGC
ATTCACAGGAATCTATCAGCAAGGAGGAGCCCACTGCCTGGGAACCCAGCGACCCAAACGAGCCAA
ACGAGACTCCTCG

ACGCGTACGCGGCCGCTCGAG - GFP Tag - GTTTAA



[View online »](#)

Protein Sequence: >MG217689 representing NM_001025296
 Red=Cloning site Green=Tags(s)

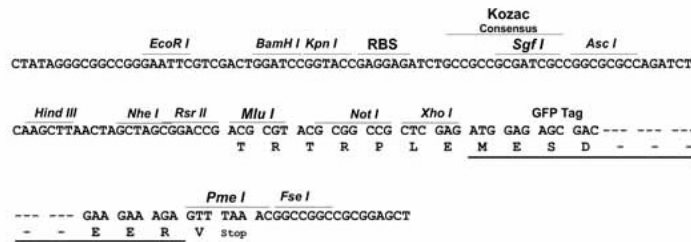
MELSRGASAPDDVRLPKCLLRNHSRDQHVAASSLEELRSKACELLAIDKSLTPITLVLAEDGTIV
 DDDYFLCLPSNTKFVALACNEKIYNDSDGGTAWVSQESFEADEPDSRAGVKWKNVARQLKEDLSSIIL
 LSEEDLQALIDIPCAELAQELCQSCATVQGLQSTLQQVLDQREEARQSKQLELYLQALEKEGNILSNQK
 ESKAALSEELDAVDTGVGREMASEVLLRSQILTLKEKPAPELSLSSQDLESVSKEDPKALAVALSWDIR
 KAETVQQACTTELALRLQQVQSLHSLRNL SARRSPLPGEPQRPKRAKRDS

TRTRPLE - GFP Tag - V

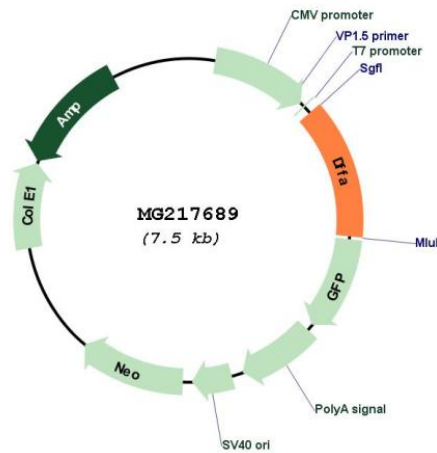
Restriction Sites: SgfI-MluI

Cloning Scheme:

Cloning sites used for ORF Shuttling:



Plasmid Map:



ACCN: NM_001025296

ORF Size: 993 bp

OTI Disclaimer:	The molecular sequence of this clone aligns with the gene accession number as a point of reference only. However, individual transcript sequences of the same gene can differ through naturally occurring variations (e.g. polymorphisms), each with its own valid existence. This clone is substantially in agreement with the reference, but a complete review of all prevailing variants is recommended prior to use. More info
OTI Annotation:	This clone was engineered to express the complete ORF with an expression tag. Expression varies depending on the nature of the gene.
Components:	The ORF clone is ion-exchange column purified and shipped in a 2D barcoded Matrix tube containing 10ug of transfection-ready, dried plasmid DNA (reconstitute with 100 ul of water).
Reconstitution Method:	<ol style="list-style-type: none">1. Centrifuge at 5,000xg for 5min.2. Carefully open the tube and add 100ul of sterile water to dissolve the DNA.3. Close the tube and incubate for 10 minutes at room temperature.4. Briefly vortex the tube and then do a quick spin (less than 5000xg) to concentrate the liquid at the bottom.5. Store the suspended plasmid at -20°C. The DNA is stable for at least one year from date of shipping when stored at -20°C.
RefSeq:	NM_001025296.2
RefSeq Size:	2453 bp
RefSeq ORF:	996 bp
Locus ID:	13347
UniProt ID:	O54786
Cytogenetics:	4 E2
Gene Summary:	Inhibitor of the caspase-activated DNase (DFF40).[UniProtKB/Swiss-Prot Function]