

## Product datasheet for **MG217687**

### Pla2g4b (NM\_145378) Mouse Tagged ORF Clone

#### Product data:

Product Type:	Expression Plasmids
Product Name:	Pla2g4b (NM_145378) Mouse Tagged ORF Clone
Tag:	TurboGFP
Symbol:	Pla2g4b
Synonyms:	A030011C02Rik; cPLA2-beta; Gm1013
Mammalian Cell Selection:	Neomycin
Vector:	pCMV6-AC-GFP (PS100010)
E. coli Selection:	Ampicillin (100 ug/mL)



[View online »](#)

**ORF Nucleotide Sequence:**

>MG217687 representing NM\_145378  
 Red=Cloning site Blue=ORF Green=Tags(s)

TTTTGTAATACGACTCACTATAGGGCGGCCGGGAATTCGTCGACTGGATCCGGTACCGAGGAGATCTGCC  
 GCC**CGGATCGCC**

ATGGCTCTGCAAACCTGCCAGTCTACATGCAAGGCAAGGTGCCAGAGACATGCCTGCTCACTGTACGCG  
 TCCTCCGGGCCAGTGGCTTGCCCTCCAAGGACCTAGTAACCTCCTCTGACTGCTATGTGACTCTGAACCT  
 GCCCACGGCTTCCAGCCACACGCTCCAGACACGCACAGTCAAGAACAGCCGAAACCTGTCTGGAATCAG  
 AACTTCCACTTCCGGATCCATAGGCAGCTCAAGAATGTTATGGAAGTCAAAGTCTTTGACCATGACCTGG  
 TGACCAGAGATGACCCAGTATTGTCACTGCTGTTGACGTGGGGACCCTGCAAATTTGGGACTCAGCGCCA  
 GAGCTTCTCCTGGTACTCAGGAGAAAGGGTCTTAGAAGTTGAGTTTCGGCTACAGACTCTGACAGAC  
 TGTGAGGAACAGCTCATCAGCAATGGCATCGTGGTGGCCCGGGAATCTCCTGCTGCACGTTGAACTGA  
 AGAGGACAGGAGATCAAAGAGGTGAGAGCGCAAAGTTCAACTTGTGGTTGCTGGGGCCTGTGAGGGCCC  
 ACAGGATGCCTCTGCGGGCACTGGATCTTCCACTTCCATTATCCAGCCTGCTGGGAGCAAGAGCTGAAT  
 GTTCATCTGCAGGATGACCCCATGAGCAGCTGAAGGTGCCACTACGAACCTACCCCTCCTCGCAGCTGG  
 TGAGACTTGTCTTCCCCACGTCCAGGAGCCACTGATGAGGCTGGAACCTCAAGAAGGAAGAAGGACCAAA  
 GGAGCTGGCTGTGCGGCTGGGCTGTGGGCCCTGCCCTGAGGAACAGGCCTTCTAAGCAAGAGGAAGCAG  
 GTGGTGGCTGCCGCGTGAAGGAGGCTTACAGCTGGACCAAGACCTGCACGAGGATGAGATCCCCGTGA  
 TTGCCGTGATGGCCACTGGTGGTGGGATCCGGGCCATGACGTCTTTGTATGGGCAGCTGGCCGGCCTGCA  
 GGAGCTCGGCCTTCTCGACTGCATCTCTATATCACGGGGGCTTCCAGGATCCACCTGGGCACTGGCCAAC  
 CTCTATGAGGACCCAGAGTGGTGCAGAAAGGACCTGGCAGGGCCCACTGAGGTGCTGAAGACACAGGTGA  
 CAAAGAGCAAGCTGGGTGCGTTGGCCCTAGCCAACTTTGGCGGTACCGGCAAGAGCTGGCTGAGCGTGC  
 TCGCCTGGGCCACCCAACCTGTTCAACCAACTTGTGGGCCCTCATTAAATGAGGCCTTGTGCACGACAAG  
 CCCCATGAACACAACTCTCAGATCAACGAGAGGCCCTGAGTCGAGGCCAGAACCCTCTGCCTATCTATT  
 GTGCCCTCAACAGCAAGGAGCAGGGCCTGAGTACCTTTGACTTTGGGGAGTGGTGTGAGTCTCTCCATA  
 TGAAGTCGGCTTCCCAAGTATGGAGCCTTCATCTCCTCCGAGCTCTTTGGCTCGGAGTTCTTTATGGGG  
 CGGCTGGTGAAGCAGCTTCCCGAGTCCCGCATCTGCTTCTGGAAGGCATCTGGAGCAATCTGTTTGCGG  
 CCAGCCTCCAAGACAGCTTGTACTGGTCTCAGAACCCAGCCAGTTCTGGGACCCTGGGCGCAGGATCA  
 GGCCAACCTGGACAAAGAGCAGGTCCCCATCTGAAGATAGCAGAGCCACCGACAATGGCTGGCAGGATC  
 GCCGAGCTTCTACTGACCTCCTGACAAAGCGTCCCCTCGCCACGCCACCCACAACCTTACGCGAGGCC  
 TCCATTTCCACAAGGACTATTTCCAGAACTCTCACTTCTCTGCCTGGAAAGCTTCCAAACTGGACAGGCT  
 CCCCACCCAGCTGACACCCACTGAGCCCCACCTCTGCCTCCTGGATGTTGGCTATCTCATCAATACTAGC  
 TGCCCACCCCTCCTGCAGCCAACACGGGATGTGGACCTCATCTTGTCACTGGACTACAACCTCTACGGAG  
 CCTTTCAGCAGCTGCAGCTTCTGAGCCGGTCTGCCAGGAGCAGGGCATCCCTTTCCCATCCATCTCACC  
 CAGCCCCGAGGAGCAGCGGCAGCCTCAGGAGTGCATCTGTTCTGTGACCAGCCAGCCCGAAGCCCCG  
 GCTGTGCTGCACTTCCCTTTGGTCAATGACTCCTTCCAAGACTACTCTGCCCTGGGGTGGCCACGGACAT  
 CGGAGGAGAAGGACAGTGGGAGGTGAATCTGTCTTCTTCTGACTCCCCATACCACTACACAAAAGTGAC  
 CTACAGCCAGGAAGATGTGGACAAGCTGTTACGGCTGACGCATTACAACATCTGCAACAACCGGATCGG  
 CTGCGGGAGGCCATGCACCAGGCCGTGCAGCGGGGAGAAAGCGCAACAGTTTAGGCCGGAG

AG**CGGACCG**ACGCGTACGCGGCCGCTCGAG - GFP Tag - GTTTAA

**Protein Sequence:** >MG217687 representing NM\_145378  
 Red=Cloning site Green=Tags(s)

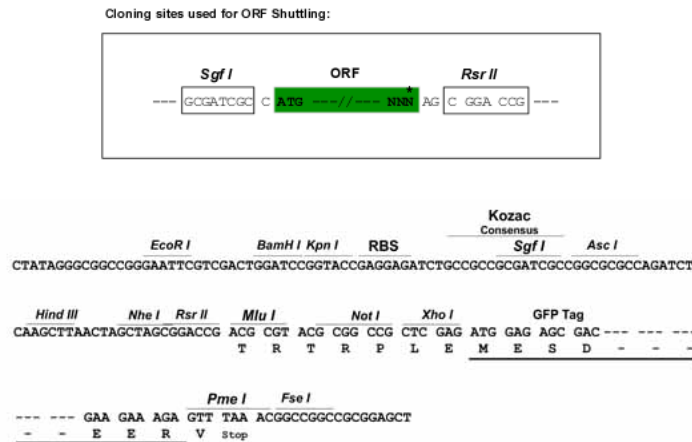
MALQTCPVYMQAKVPETCLLTVRVLRASGLPSKDLVTSSDCYVTLNLPASSHTLQTRTVKNSRNPVWNO  
 NFHFRIHRQLKNVMEKLVFDHDLVTRDDPVLVSLFDVGTLQIGTQRQSFSLGTQEKGCLEVEFRLQTLTD  
 CEEQLISNGIVVARELSCLHVELKRTGDPKRSEKRVQLVVAGACEGPQDASAGTGSFHFHYPACWEQELN  
 VHLQDDPHEQLKVPLRTLPSQLVRLVFPTSQEPLMRLELKKEEGPKELAVRLGCGPCPEEQAFLSKRKQ  
 VVAAAALKKALQLDQDLHEDEIPVIAVMATGGGIRAMTSLYQLAGLQELGLLDCISYITGASGSTWALAN  
 LYEDPEWSQKDLAGPTEVLKTQVTKSKLGALAPSQLWRYRQELAEARARLGHPTCFNLWALINEALLHDK  
 PHEHKLSQREALSRGQNPLPIYCALNSKEQGLSTDFGEWCEFSPYEVGFPHYGAFISSELFSEFFMG  
 RLVKQLPESRICFLEGIWSNLF AASLQDSL YWSSEPSQFWRWAQDQANLDKEQVPHLKIAEPTMAGRI  
 AELFTDLLTKRPLAHATHNFRGLHFHKDYFQNSHFSAWKASKLDRLPNQLTPTEPHCLLDVGYLINTS  
 CPPLLQPTRDVLILSLDYNLYGAFQQLQLLSRFCEQEQIPFPSISPSPEEQRPQECHLFCDPAQPEAP  
 AVLHFPLVNSDFQDYSAPGVPRTSEEKAAGEVNLSSSDSPYHYTKVTYSQEDVDKLLRLTHYNICNNQDR  
 LREAMHQAVQRRRKRKQFRPE

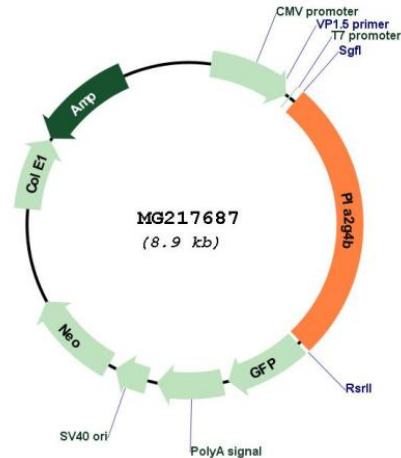
SGPTRRRLE - GFP Tag - V

**Restriction Sites:**

SgfI-RsrII

**Cloning Scheme:**



**Plasmid Map:**


**ACCN:** NM\_145378

**ORF Size:** 2373 bp

**OTI Disclaimer:** The molecular sequence of this clone aligns with the gene accession number as a point of reference only. However, individual transcript sequences of the same gene can differ through naturally occurring variations (e.g. polymorphisms), each with its own valid existence. This clone is substantially in agreement with the reference, but a complete review of all prevailing variants is recommended prior to use. [More info](#)

**OTI Annotation:** This clone was engineered to express the complete ORF with an expression tag. Expression varies depending on the nature of the gene.

**Components:** The ORF clone is ion-exchange column purified and shipped in a 2D barcoded Matrix tube containing 10ug of transfection-ready, dried plasmid DNA (reconstitute with 100 ul of water).

**Reconstitution Method:**

1. Centrifuge at 5,000xg for 5min.
2. Carefully open the tube and add 100ul of sterile water to dissolve the DNA.
3. Close the tube and incubate for 10 minutes at room temperature.
4. Briefly vortex the tube and then do a quick spin (less than 5000xg) to concentrate the liquid at the bottom.
5. Store the suspended plasmid at -20°C. The DNA is stable for at least one year from date of shipping when stored at -20°C.

**RefSeq:** [NM\\_145378.4](#), [NP\\_663353.3](#)

**RefSeq Size:** 3878 bp

**RefSeq ORF:** 2376 bp

**Locus ID:** 211429

**UniProt ID:** [P0C871](#)

**Cytogenetics:** 2 E5

**Gene Summary:**

Calcium-dependent phospholipase A2 that selectively hydrolyzes glycerophospholipids in the sn-2 position with a preference for arachidonoyl phospholipids. Has a much weaker activity than PLA2G4A (By similarity).[UniProtKB/Swiss-Prot Function]