

Product datasheet for **MG217677**

Pde1c (NM_011054) Mouse Tagged ORF Clone

Product data:

Product Type:	Expression Plasmids
Product Name:	Pde1c (NM_011054) Mouse Tagged ORF Clone
Tag:	TurboGFP
Symbol:	Pde1c
Mammalian Cell Selection:	Neomycin
Vector:	pCMV6-AC-GFP (PS100010)
E. coli Selection:	Ampicillin (100 ug/mL)



[View online »](#)

ORF Nucleotide Sequence:

>MG217677 representing NM_011054
 Red=Cloning site Blue=ORF Green=Tags(s)

TTTTGTAATACGACTCACTATAGGGCGGCCGGGAATTCGTCGACTGGATCCGGTACCGAGGAGATCTGCC
 GCC**CGATCGCC**

ATGGAGTCTCAACCAAGGAAATTGAAGAATTCGAGAGCAACTCTCTGAAACACCTGCAACCTGAGCAGA
 TCGAGAAAATCTGGCTTCGGCTCCGCGGGCTGAGGAAATAAAGAAAACGTCCCAGAGGTTACGGTCTTT
 GGTCAAGCAATTAGAACGAGGAGAGGCCTCTGTGGTAGACCTTAAGAAGAATCTGGAATATGCAGCCACA
 GTGCTTGAATCTGTATATATTGATGAAACAAGGCGACTGCTGGATACAGAGGATGAGCTTAGTGACATTC
 AATCAGATGCTGTGCCTCAGAAGTTCGGGATTGGCTGGCTCCACCTTCACACGCAGATGGGGATGAT
 GCTTAGGAGAAGTGATGAGAAGCCAGGTTCAAGAGCATCGTCCATGCGGTGCAAGCTGGGATATTTGTG
 GAAAGAATGTACAGACGGACATCAAACATGGTTGGGCTGAGCTATCCACCGGCTGTAATCGATGCATTGA
 AGGATGTGGATACGTGGTCTTCGATGTCTTTCCCTCAATGAGGCCAGTGGAGATCATGCACTGAAGTT
 CATTTTCTATGAATTACTCACACGTTATGACCTGATCAGCCGTTTTAAGATACCGATTTCTGCATTGTC
 TCAATTTGTGGAGGCCCTCGAAGTGGGTTACAGCAAGCACAAAAATCCTTACCATAACCTGATGCATTGCAG
 CTGACGTCACACAGACTGTGCATTACCTCCTTTATAAGACAGGAGTAGCAAACCTGGCTGACAGAGCTGGA
 GATCTTTGCAATAATCTTTTCGGCTGCCATCCATGACTATGAACATACTGGAACACAAAACATTTCCAC
 ATTCAGACTCGGTGAGATCCAGCTATCCTGTACAATGACAGATCTGTCCTGGAGAACCACCACCTGAGTG
 CAGCCTACCGCCTTCTGCAGGAAGACGAAGAGATGAATATTCTGGTTAACCTCTCAAAGGATGACTGGAG
 GGAGTTTCAACTTTGGTTATTGAGATGGTAATGGCCACAGATATGTCCTGTCATTTCCAGCAAATCAAA
 GCCATGAAGACAGCCCTGCAGCAACCAGAAGCAATTGAGAAGCCGAAAGCCTTATCCCTCATGTTACACA
 CAGCAGACATCAGTCATCCTGCGAAAGCATGGGACCTGCACCACCGCTGGACCATGTCTCTCCTGGAGGA
 GTTCTTTAGACAGGGTGACAGAGAAGCAGAGCTGGGGCTGCCATTTTCTCCTCTTTGTGACAGAAAGTCA
 ACCATGGTTGCTCAGTCACAAGTGGGTTTTATTGACTTATTGTGGAGCCACCTTCACTGTGCTCACGG
 ACATGACCGAGAAGATTGTGAGTCCATTAATTGACGAAAGCTCCCAGACTGGTGGACAGGGCAGAGGAG
 ATCAAGTTTGAACAGCATCAACTCATCAGATGCAAAGCGATCCGGTGTCAAGAGTTCTGGGTCAGATGGA
 AGTGCTCCCATCAACAATTCTGTCATTCTGTTGACTATAAGAGTTTTAAAGCCACTTGGACTGAGGTGG
 TGCAGATCAATCGGGAGCGGTGGCGAGCCAAGGTACCCAAAGAAGAAAAAGCCAAGAAGGAAGCTGAAGA
 GAAGGCTCGCCTGGCTGCTGAGGAAAAGCAAAGGAAATGGAAGCCAAAAGCCAAGCTGAACAAGGCACA
 ACCAGCAAAGGCGAGAAAAGACATCAGGAGAAGCCAAAAGTCAAGTCAATGGAACACGCAAGGGTGATA
 ACCCTCGTGGGAAGAACTCCAAAGGAGAAAAGGCAGGCGAAAAGCAGCAGAACGGTGACTTGAAAGACGG
 TAAAAATAAGGCAGACAAGAAGGATCACTCCAACACCGGAAATGAGTCAAAGAAAACAGATGGTACAAAAG
 AAGCGTTCTATGGCTCACCTGCTCCGAGCACTAGTTCACAAGTCGCATTACCTTGCCAGGAGACTACG
 GA

ACGCGTACGCGGGCCGCTCGAG - GFP Tag - GTTTAA

Protein Sequence: >MG217677 representing NM_011054
 Red=Cloning site Green=Tags(s)

MESPTKEIEEFESNSLKHLLQPEQIEKIWLRLRGLRKYKKTSQLRSLVKQLERGEASVVDLKKNLEYAAT
 VLESVYIDETRRLLDTEDELSDIQSDAVPSEVRDWLASTFTRQMGMLRRSDEKPRFKSIVHAVQAGIFV
 ERMYYRRTSNMVGLSYPPAVIDALKDVDTSFDFVSLNEASGDHALKFIYELLTRYDLISRFKIPISALV
 SFVEALEVGYSKHKNPYHNLMAADVTQTVHYLLYKTGVANWLTELEIFAIIFSAAIHDYEHTGTTNNFH
 IQTRSDPAILYNDRSVLENHHL SAAAYRL LQEDEEMNIL VNL SKDDWREFRTLVIEMVMATDMSCHFQQIK
 AMKTALQQPEAIEKPKALSLMLHTADISHPAKAWDLHHRWTMSLLEEFFRQGDREAELGLPFSPLCDRKS
 TMVAQSQVGFIDFIVEPTFTVL TDMTEKIVSPL IDESSQTGGTGQRRSSLNSINSSDAKRSQVSSGSDG
 SAPINNSVIPVDYKSFKATWTEVVQINRERWRKVPKEEKAKKEAEEKARLAAEEKQKEMEAKSQAEQGT
 TSKGEKKTSGEAKSQVNGTRKGDNPRGKNSKGEKAGEKQNGDLKDGKNKADKKDHSNTGNE SKKTDGTK
 KRSHGSPAPSTSSTRITLPGDYG

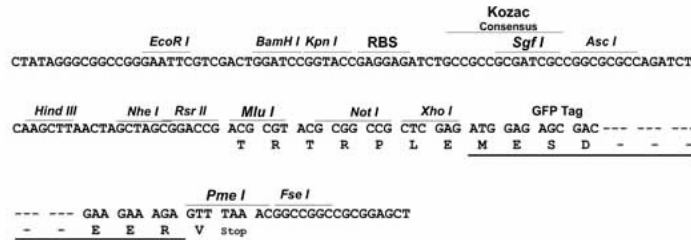
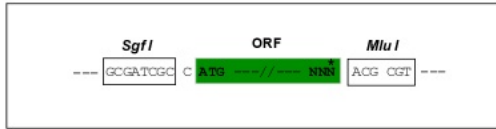
TRTRPLE - GFP Tag - V

Restriction Sites:

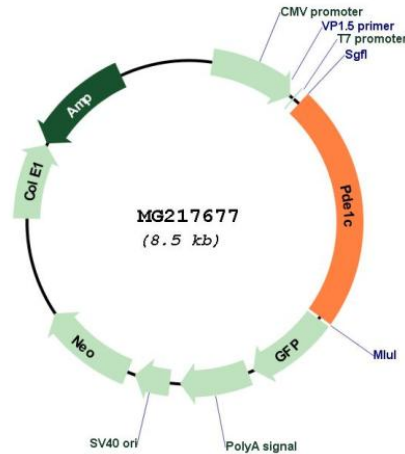
Sgfl-MluI

Cloning Scheme:

Cloning sites used for ORF Shuttling:



Plasmid Map:



ACCN: NM_011054

ORF Size: 1962 bp

OTI Disclaimer: The molecular sequence of this clone aligns with the gene accession number as a point of reference only. However, individual transcript sequences of the same gene can differ through naturally occurring variations (e.g. polymorphisms), each with its own valid existence. This clone is substantially in agreement with the reference, but a complete review of all prevailing variants is recommended prior to use. [More info](#)

OTI Annotation: This clone was engineered to express the complete ORF with an expression tag. Expression varies depending on the nature of the gene.

Components: The ORF clone is ion-exchange column purified and shipped in a 2D barcoded Matrix tube containing 10ug of transfection-ready, dried plasmid DNA (reconstitute with 100 ul of water).

- Reconstitution Method:
1. Centrifuge at 5,000xg for 5min.
 2. Carefully open the tube and add 100ul of sterile water to dissolve the DNA.
 3. Close the tube and incubate for 10 minutes at room temperature.
 4. Briefly vortex the tube and then do a quick spin (less than 5000xg) to concentrate the liquid at the bottom.
 5. Store the suspended plasmid at -20°C. The DNA is stable for at least one year from date of shipping when stored at -20°C.

RefSeq: [NM_011054.4](#), [NP_035184.1](#)

RefSeq Size: 4676 bp

RefSeq ORF: 1965 bp

Locus ID: 18575

UniProt ID: [Q64338](#)

Cytogenetics: 6 27.65 cM

Gene Summary: Calmodulin-dependent cyclic nucleotide phosphodiesterase with a dual-specificity for cAMP and cGMP, which are key regulators of many important physiological processes (PubMed:8810348). Exhibits high affinity for both cAMP and cGMP (By similarity). Modulates the amplitude and duration of the cAMP signal in sensory cilia in response to odorant stimulation, hence contributing to the generation of action potentials. Regulates smooth muscle cell proliferation. Regulates the stability of growth factor receptors, including PDGFRB (Probable).[UniProtKB/Swiss-Prot Function]