

Product datasheet for **MG217650**

Lnx1 (NM_001159578) Mouse Tagged ORF Clone

Product data:

Product Type:	Expression Plasmids
Product Name:	Lnx1 (NM_001159578) Mouse Tagged ORF Clone
Tag:	TurboGFP
Symbol:	Lnx1
Synonyms:	Lnx
Mammalian Cell Selection:	Neomycin
Vector:	pCMV6-AC-GFP (PS100010)
E. coli Selection:	Ampicillin (100 ug/mL)



[View online »](#)

ORF Nucleotide Sequence:

>MG217650 representing NM_001159578
 Red=Cloning site Blue=ORF Green=Tags(s)

TTTTGTAATACGACTCACTATAGGGCGGCCGGAATTCGTCGACTGGATCCGGTACCGAGGAGATCTGCC
 GCC**GCGATCGCC**

ATGAAGGCGCTGCTGCTTCTGGTCTGCCCTGGCTGAGTCCAGCTAACTACATTGACAATGTGGCAACC
 TGCACTTCTGTACTCGAACTCTGCAAAGGGCCTCCCACTATGGCCTGACCAAGGACAGGAAAAGGCG
 CTCTCAAGATGGCTGTCCTGATGGTTGCCCCAGCCTCATGGCAACGACGCTCTCCCCAGAGGTTTCTGCA
 GCCGCCACCATCTCTTTAATGACAGATGAGCCTGGCCTAGACAACCCTGCCTACGTGTCCTCGGTGGAGG
 ATGGTGAGCCAGTAGCCAACCTCAGACTCTGGCCGGAGCAACCGGACTAGGGCACGGCCCTTTGAGCG
 CTCCTACTATGAGAAGCCGGTCTTTCAAGAAGATCAACCGAGCTCTAAGTGTCTCCGGAGGACGAAGAGC
 GGGAGTGTGTTGCCAACATGTTGACCAGGGCAGGGACAACCTCTGAGAACCACTGTCCCGAAGTCT
 TCCCAAGTTGTTTACCTGATCCAGATGGTGAATTACAAGCATCAAATCAACAGAGCGGATCCAG
 CGAAAGCCTCTCCATAAGGCTGGTGGGGGCGAGGAGACCGCTGGTCCACATCATCCAGCATATT
 TATCGCGATGGAGTGATTGCCAGAGATGGACGGCTGCTGCCAGGAGACATCATTCAAGGTCAACGGCA
 TGGACATCAGCAATGTCCCTCATAACTATGCCGTGCGGCTCCTGCGGCAGCCCTGCCAGGTGCTGCGGT
 AACGGTGTGCGGGAGCAGAAGTTCCGTAGCAGAAGCAATGCGCACGTGCCGGACTCCTATGGACCTCGG
 GATGACAGCTTCCATGTAATCCTCAACAAAAGCAGCCCGAGGAGCAGCTTGGCATAAAGCTGGTGGCC
 GGGTGGATGAGCCCGCGTGTTCATCTTCAACGTGCTAAATGGGGGTGTCGCGGACCGACACGGCCAGT
 GGAGGAGAATGACCGTGTGCTGGCCATCAACGGGATGACCTTCGATTTGGCAGTCCAGAGAGTGCAGT
 CATCTGATTCAGGCCAGTGAAAGACGCGTCCATCTCGTCGTGTCGCCAGGTTTCGACAGTCCAGCCAG
 ACATCTTTCAAGAAGCTGGTGGATCAGCAATGGCCAGCAATCCCAGGCCAGGAGGAGGAACACAGC
 TTCTAAGCCTGCAGCCACCTGTATGAGAAGTTGTAAGTGTCTGGAAAGACCCAGCAGTCTCTCGGC
 ATGACCGTTCGAGGGGAGCATCCACAGGAATGGGACTTGCCATCTATGTCATCAGTGTGAACCCG
 GCGGAGTCATAAGCAGAGACGGGAGAATAAAAACAGGTGACATTTTATTGAATGTGAATGGGATTGAGCT
 CACAGAGGTCAGCCGGACAGAGGCGTTGCCATACTGAAGAGCGCACCCCTCCTCAGTGGTACTCAAAGCC
 TTGGAAGTCAAGGAACAGGAGGCCAGGAAGACTGCAGCCAGCAGCCCTGGACTCCAACCAACGTGA
 CCCCCTGGTACTGGTCCCCATCCTGGGTGATGTGGCTGGAATTACCACAGTACTTATGTAAGTGA
 AGATGTGATACTGCGAAGGAACACAGCTGGAAGCCTGGGCTTCTGCATTGTGGGAGTTATGAAGAATAC
 AGTGGGAACAAACCTTTTTTATCAAGTCCATTGTTGAAGGAACCTGCATACAATGACGAAGAATCA
 GATGTGGTGCATTTCTCGCTGTCAACGGTAGAAGTACATCGGGTATGATACAGCCTTGCCTGGCCAG
 GATGCTCAAGGAACCTAAAGGGAGAATTACTCTGACCATTGCTTCTTGGCCTGGTACTTTTTTTA

AG**GCGACCG**ACGCGTACGCGGCCGCTCGAG - GFP Tag - GTTTAA

Protein Sequence:

>MG217650 representing NM_001159578
 Red=Cloning site Green=Tags(s)

MKALLLLVLPWLSpanyIDNVGNLHFLYSELCKGASHYGLTKDRKRRSQDGPDPGCASLMATTLSPVSA
 AATISLMTDEPGLDNPAYVSSVEDGEPVANSSDSGRSNRTRARPFERSTMRSRFFKINRALSALRRTKS
 GSVVANHVQGRDSENTTVPEVFPRLFHLIPDGEITSIKINRADPSELSIRLVGGSETPLVHIIQHI
 YRDGVIARDGRLLPGDIIILKVNMDISNVPHNYAVRLLRQPCQVLRRLTVLREQKFRSRNAHVDPDSYGR
 DDSFHVILNKSSPEEQLGIKLVRRVDEPGVIFNVNLGGVADRHGQLEENDRVLAINGHDLRFSGPESAA
 HLIQASERRVHLVVSQRVRSPPDIFQEAGWISNGQQSPGGERNTASKPAATCHEKVSVWKPSESLG
 MTVGGGASHREWDLPIYVISVEPGVISRDRIKTGDILLNVNGIELTEVSRTEAVAILKSAPSSVVLKA
 LEVKEQEAQEDCSPAALDSNHVTPPGDWSPSWMWLELPQYLCNCKDVILRRNTAGSLGFCIVGGYEEY
 SGNKPFPIKSIVEGTPAYNDGRIRCGDILLAVNGRSTSGMIHAACLARMLKELKGRITLTIASWPGTFL

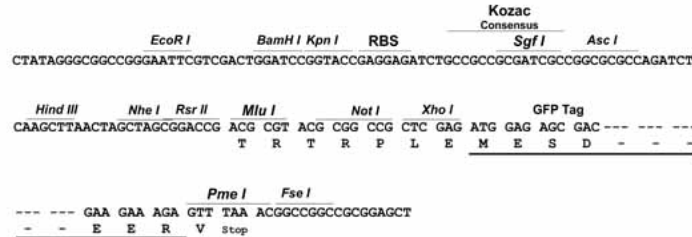
SGP**TRRRLE** - GFP Tag - V

Restriction Sites:

Sgfl-RsrII

Cloning Scheme:

Cloning sites used for ORF Shuttling:


ACCN: NM_001159578

ORF Size: 1707 bp

OTI Disclaimer: The molecular sequence of this clone aligns with the gene accession number as a point of reference only. However, individual transcript sequences of the same gene can differ through naturally occurring variations (e.g. polymorphisms), each with its own valid existence. This clone is substantially in agreement with the reference, but a complete review of all prevailing variants is recommended prior to use. [More info](#)

OTI Annotation: This clone was engineered to express the complete ORF with an expression tag. Expression varies depending on the nature of the gene.

Components: The ORF clone is ion-exchange column purified and shipped in a 2D barcoded Matrix tube containing 10ug of transfection-ready, dried plasmid DNA (reconstitute with 100 ul of water).

- Reconstitution Method:**
1. Centrifuge at 5,000xg for 5min.
 2. Carefully open the tube and add 100ul of sterile water to dissolve the DNA.
 3. Close the tube and incubate for 10 minutes at room temperature.
 4. Briefly vortex the tube and then do a quick spin (less than 5000xg) to concentrate the liquid at the bottom.
 5. Store the suspended plasmid at -20°C. The DNA is stable for at least one year from date of shipping when stored at -20°C.

RefSeq: [NM_001159578.1](#), [NP_001153050.1](#)
RefSeq Size: 3098 bp

RefSeq ORF: 1710 bp

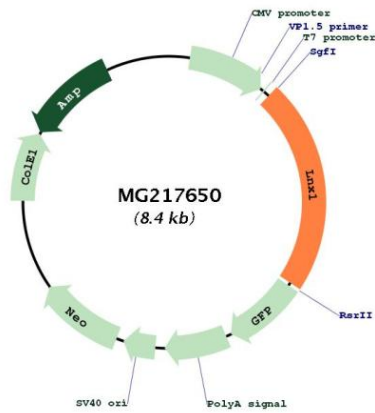
Locus ID: 16924

UniProt ID: [O70263](#)

Cytogenetics: 5 C3.3

Gene Summary: E3 ubiquitin-protein ligase that mediates ubiquitination and subsequent proteasomal degradation of NUMB. E3 ubiquitin ligases accept ubiquitin from an E2 ubiquitin-conjugating enzyme in the form of a thioester and then directly transfers the ubiquitin to targeted substrates. Mediates ubiquitination of isoform p66 and isoform p72 of NUMB, but not that of isoform p71 or isoform p65.[UniProtKB/Swiss-Prot Function]

Product images:



Circular map for MG217650