

CTTGTTTTGGGCTAATGAGCCCGATGAGCCTGATCCCTCCAGATGCTGGAGCGAGGAGCCTCAGGTGCT
CTGTCTTTGGCCTGAGGAGCAGAATACCAAAAGATGTTGGCAGGAAGAGCCCGATGCTCCGTGCTTCTGG
CCAGAAGATAGAGAAGAGCCTATCGTATCTTGCCTGCAATTTAAGGAGCCTGAGAAAACCTAAGTTTCGGA
GCAGTTGGCCAGAAGAATTGAAGACTGCTGCCAACACGAGGATTGCCTCTGGAGCCTCTGTTGGCCGA
CGGAGAGCTGCTCCAGGCATGTCGGGGGCCACCATCCGATCCAGGTCCCCTCTCTCTTTGCCTTCTGAA
CCCGAAACAGCCAGGAGGAGGGTGTCCGGCTTCGCGCTGTCTTCGACGCTTTGGACCGAGACGGGGACG
GATTCGTCGCGCATCGAGGACTTCATCCAGTTCGCAACCGTGTACGGCGCCGAACAAGTAAAGATCTTAC
CCAGTACCTCGATCCGAGTGGCCTGGGAGTCATTTCAATTTGAGGATTTCTACCAAGGCATCGTGGCAATC
CGCAACGGGGACCCTGACGGGCAACTGTATTCACTGGAACCGGTGCAGGACGAGGAGACTCCTGCTTGGC
CAGACGAGTTTGTACTTTGTGACATATGAGGCCAACGAAGTTACCGACTCTGCTTATATGGGGTCAGA
GAGCACATACTCCGAGTGCAGAACCTTCACCGACGAGGACACAAGCACCTCGTCCATCTGAGTTGCAA
CCTGAGGGGGATGTGGACAGCGTGGCGGTTCTGGCGTCCAAGCGAGTGTCTGGACACGATGGAGGAGC
CCGACCATGGCGCTCTTTGCTTCTCCCGGTAGGAGCAGGCCCATCTCAGGCCGTGGTATGGTCAT
TGGCTCAGAGGAACATTCGAAGACTATGGAGAAGGAAATGAGGCCGAACCTCAGTCCAGAAAACCTTGTGT
GATGGCGACGGAGAGGACCCGGCCTTCTCACCCAAGTCTAACCCACTGGCTTCAAAGCTCTGTGACG
TTCTTACTGATGAGGCCCTTCGAGTCTACTGTTCCAGTGTACAAAGCAGATTAACAGGCTTGAAGACCT
CTCCGCTCGCCTGACCGACCTGGAGATGAACAGCCAGCTAAACGCCGTGCCAGCAGAAAAGTGGCCAGA
TACCTCCACCAGAGCGGAACCCTGACAATGGAGGCTCTTGAGGACCCACCACCTGAACCAGTAGAGTGCC
CAGAGGAAGACATCGCTGATAAGGTGATCTTTCTGGAGCGCCGCTGAGTGAGCTGGAAAAGGATCCCGC
GGCCGCTGGTGAGCAACATGGCAGACTGCGACAGGAGAATTTGCAACTGGTCCACCGGGCGAATGCACTC
GAAGAGCAGCTCAAGGAGCAGGAGTTCGGGGCCAGGAAAAGGTGCTGGAAGAAACAAGGAAGCAGAAGG
AACTGCTCTGTAAGATGGAACCGCGAGAAATCCATAGAAATCGAGAATCTGCAAGCACGCCTGCAGCAGCT
GGACGAGGAGAACTCTGAGCTCCGATCCTGCACCTCCATGCCTGAAGGCCAACATCGAACGCCTTGAGGAG
GAGAAGCAGAAGATGCTTGATGAAATTGAGGAGCTGACACAGAGGCTGTCCGAGGAACAGGAGAACAAAA
GAAAAATGGGTGATCGGCTGTACACGAGCGCCATCAGTTCCAACGGGACAAAGAGGCCACTCAGGAGCT
TATTGAGGACCTGCGGAAGCAGCTCGAGCACTTGCAGCTGCTGCGGCTGGAGGTGGAGCAGAGAAGAGGC
AGAAGCAGTTCACTGGGACTCCAGGAGTAAATTCTCGGGCACGGGAGAGTGAGCTCGAACAGGAGGTAA
GGAGGCTGAAGCAGGACAACAGAAATCTGAAGGAGCAGAACGATGAACTTAACGGCCAGATCATCACCT
CAGTATCCAGGGCGGAAGTCCCTCTTCTCCACCTTTTTTCCGAGAGCTTGGCTGCTGAAATCTCCAGC
GTCAGCAGAGACGAATTGATGGAAGCCATCCAGAAGCAGGAGGAAATTAATTTCCGCTTCAGGATTATA
TCGATAGGATCATCGTGGCAATTCTGGAGACTAATCCCTCTATATTGGAAGTCAAG

ACGCGTACGCGGGCCGCTCGAG - GFP Tag - GTTTAA

Protein Sequence: >MG217641 representing NM_001162869
 Red=Cloning site Green=Tags(s)

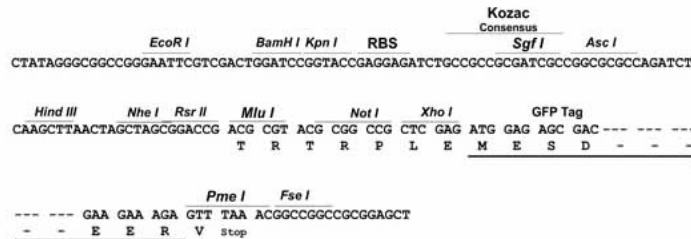
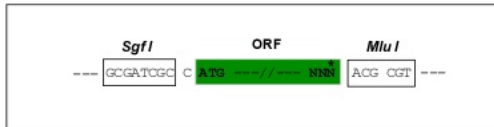
MELCQPTSLSDHDQPASGPQRGMGLVGPDAPRGWSEEPPEEHAQLQRWPEGNAPICWPVEEVEEPHAPSR
 WAKEPNAPRCSSQEPDESCHLAELEEESDPRCWPQEPDTPCHLAKELEEDAPRCLPQEPDTPCYLAKE
 LEEPNIIRCWPQEPDVPCHLAKELEEDAPRCWPQEPDAFCHLLKEVEEPDALRCWLQGPDPCHLAKEL
 EDLDSRCWPQEPDESCHLAKELLEEDAPCHLAKELEEDAPRCWPQEPDVPCLLAKKWEESDAPCLL TE
 ELEEDDALHCWPQESEAPCLLAKELLEEDASHSCPQEADTGCLSAKEPEEPDVSHLWQGVDPDAPCLLVKE
 PEEADALHCCWPVEESEP DALNPPCFWANEPDEPDPSRCWSEEPQVLCCLWPPEEQNTKRCWQEEPDPFCW
 PEDREEP IVSCLQFKEPEKPKVRSWPEELEDCCPTRGLPLEPLADGELLQACPGPPSDPGPALSPLSE
 PGTAQEEGARLRVFDALDRDGDGFVRIEDFIQFATVYGAEQVKDLTQYLDPSGLGVISFEDFYQGIVAI
 RNGDPPDGLYSVEPVQDEETPACADEDFDFTYEANEVTD SAYMGSESTYSECETFTDEDTSTLVHPELQ
 PEGDVDSAGGSGVPSECLDTMEEPDHGALLLLPGRSRPHSQAVVMVIGSEEHFEDYGEAELSPETLC
 DGDGEDPAFLTPSSNPLASKLCDVLTDEAFEFYCSQCHKQINRLEDLSARLTDLEMNSPAKRLSSRKVAR
 YLHQSGTLTMEALEDPPEPVECPPEEDIAADKVIIFLERRVSELEKDSAAAGEQHGRRLQENLQLVHRANAL
 EEQLKEQEFRAQEKVLEETRQKQKELLCKMEREKSTIEIENLQARLQQLDEENSELRCTPCKANIERLEE
 EKQKMLDEIEELTQRLSEEQENKRKMGDRLSHERHQFQRDKEATQELIEDLRKQLEHLQLLRLEVEQRRG
 RSSSLGLQEYNSRARESELEQEVRRLLKQDNRNLLKEQNDELNGQIITLSIQGAKSLFSTFSSESAAEISS
 VSRDELMEAIQKQEEINFRLQDYIDRIIVAILETNPSILEVK

TRTRPLE - GFP Tag - V

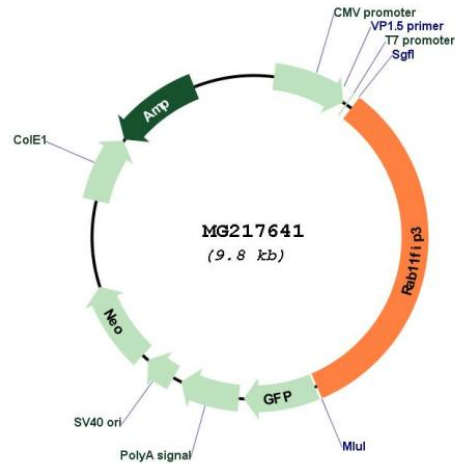
Restriction Sites: SgfI-MluI

Cloning Scheme:

Cloning sites used for ORF Shutting:



Plasmid Map:



ACCN: NM_001162869

ORF Size: 3276 bp

OTI Disclaimer: The molecular sequence of this clone aligns with the gene accession number as a point of reference only. However, individual transcript sequences of the same gene can differ through naturally occurring variations (e.g. polymorphisms), each with its own valid existence. This clone is substantially in agreement with the reference, but a complete review of all prevailing variants is recommended prior to use. [More info](#)

OTI Annotation: This clone was engineered to express the complete ORF with an expression tag. Expression varies depending on the nature of the gene.

Components: The ORF clone is ion-exchange column purified and shipped in a 2D barcoded Matrix tube containing 10ug of transfection-ready, dried plasmid DNA (reconstitute with 100 ul of water).

Reconstitution Method:

1. Centrifuge at 5,000xg for 5min.
2. Carefully open the tube and add 100ul of sterile water to dissolve the DNA.
3. Close the tube and incubate for 10 minutes at room temperature.
4. Briefly vortex the tube and then do a quick spin (less than 5000xg) to concentrate the liquid at the bottom.
5. Store the suspended plasmid at -20°C. The DNA is stable for at least one year from date of shipping when stored at -20°C.

RefSeq: [NM_001162869.1](#), [NP_001156341.1](#)

RefSeq Size: 5015 bp

RefSeq ORF: 3279 bp

Locus ID: 215445

UniProt ID: [Q8CHD8](#)

Cytogenetics: 17 A3.3

Gene Summary:

Acts as a regulator of endocytic traffic by participating in membrane delivery. Required for the abscission step in cytokinesis, possibly by acting as an 'address tag' delivering recycling endosome membranes to the cleavage furrow during late cytokinesis (By similarity). Also required for the structural integrity of the endosomal recycling compartment during interphase. Acts as an adapter protein linking the dynein motor complex to various cargos and converts dynein from a non-processive to a highly processive motor in the presence of dynactin. Facilitates the interaction between dynein and dynactin and activates dynein processivity (the ability to move along a microtubule for a long distance without falling off the track) (By similarity).[UniProtKB/Swiss-Prot Function]