

## Product datasheet for **MG217638**

### **Ptpn21 (NM\_011877) Mouse Tagged ORF Clone**

#### Product data:

**Product Type:** Expression Plasmids  
**Product Name:** Ptpn21 (NM\_011877) Mouse Tagged ORF Clone  
**Tag:** TurboGFP  
**Symbol:** Ptpn21  
**Synonyms:** PTPD1; PTPRL10  
**Mammalian Cell Selection:** Neomycin  
**Vector:** pCMV6-AC-GFP (PS100010)  
**E. coli Selection:** Ampicillin (100 ug/mL)  
**ORF Nucleotide Sequence:** >MG217638 representing NM\_011877  
**Red=Cloning site Blue=ORF Green=Tags(s)**

TTTTGTAATACGACTCACTATAGGGCGGCCGGAATTCGTCGACTGGATCCGGTACCGAGGAGATCTGCC  
GCC**CGATCGCC**

ATGCCACTGCCATTTGGATTGAAGTTGAAACGCACCCGACGCTACACTGTGTCCAGCAAGAGCTGCCTGG  
TTGCCCGGATCCAGCTGCTCAATAATGAGTTTGTGGAGTTCACTCTGTCTGTGGAGAGCACTGGCCAGGA  
GAGCCTAGAAGCTGTGGCCAGCGCCTGGAGCTGAGAGAGGTCACCTACTTTAGCCTCTGGTACTACAAC  
AAGCAGAATCAGCGCGCTGGTGGATTGGAGAAACCCCTGAAGAAGCAGCTGGACAAGCAGCACTGG  
AGCCTACCGTCTACTTCGGCGTGTATTCTATGTGCCTTCTGTTCCAGCTGCAGCAGGAGATTACCAG  
GTATCAGTATTACCTGCAGCTGAAGAAAGATATTCTGGAAGGAAACCTTCCCTGTACATTAGAACACGCC  
ATTCAGCTGGCCGGCTTAGCTGTTCAAGCTGATTTTGGTACTTTGATCAGTATGAATCCCAAGATTTTC  
TTCAGAAATTTGCCTTGCTCCCCGTGGCATGGCTACAGGATGAAAAAGTCTGGAAGAAGCAGCCAGAA  
AGTGGCCTTACTGCACCAGAAAACAGAGGGCTCACAGCTCCTGAGGCCGAGCTGCTGTACATGCAGGAG  
GTAGAGAGAAATGGATGGCTACGGAGAGGAGACTACCCTGCCAAGGACAGCCAAGGAAAGTACATATCCA  
TTGGTGCCTGTCTCGATGGCATCTTTGTGAAACACAAGAACGGAAGGCCCTCCTGTGGTGTTCAGGTGGCA  
CGACATTTGCTAACATGTCGCATAACAAGTCCTTTTTGCACTAGAGCTGGCAAAATAAGAGGAGACCATC  
CAGTTTTCAAACCTGAAGACATGGAGACAGCAAGTACGTGTGGCGGCTGTGTGGCAGGCACAAATTC  
ACAGACTGAACCAAGTGTAGCCTGCAAACGCAGGCCGACGCTGAACTCAGTCAGGAGGGGCTCATCCTC  
CAGGATGTCTCTGCCTAAACCCAGCCCTATGCGATGCCTCCCCACCCAGCTGCATTATAATGGACAT  
TATACAGAGCCATTTGCTTCTTCCCAAGACAACATCTTTGTGCCCAACAAGAATGGATTCTACTGCACT  
CCCAGACAAGCCTGGATAGAACCAGATTGACCTCAGTGGTTCGCATCCGCAACGGCAGCGTCTACAGTGC  
ACACAGTACGAATTCCTTAAACACACTTCAGCCCTACCTGCAGCCCTCCCCATGTCTCCAACCCGAGT  
ATCACTGGCAGTGATGTCATGAGACCCGACTACATCCCGTCCCACGGCACAGTGCCTCATTCCCCGT  
CTTACCGCCGACCCCTGACTACGAGACCGTATGAAGCAGCTCAACAGAGGCATGGTGCACGCAGACCG  
GCACAGCCACTCGCTGAGGAACCTCAACATTGGCAGTTCTATGCGTACAGCCGGCCGACGCTTGGTC



[View online >](#)

TACAGCCAGCCCAGATTCTGGGAGCACCTCACCTCACCTCTCCCCAGTCAGCCACTACCCCTTAACC  
TGAACACAGTTTCCACAGCCAGTCTCCGTATCCCTACCTGCCGAGAGGCGGCCAGTGGTGGGCGCGT  
GAGTGTGCCTGAACTGACAAATGTGCAGCTGCAGGCTCAGGACTACCCAGCTCCAAAATTATGAGAACC  
CAGGTGTACCGCCACCCCGCCGTATCCTTACCCAAGACCTGCCAACAGCACCCAGACCTGTCCCGCC  
ACCTCTACATCAGCAGCAGCAATCCGGATCTCATCACCAGGCGGTCCATCACTCAGTGCAGACCTTCCA  
GGAGGACAGCTTGCCTGGCTCACTCTCTGCAGGAGTGCAGGAGCCCTCACAGCAGCGGCCATGCC  
CACCTACAGAAGAGAACAGTATTGAAATCGCAGGGCTCACACATGGATTGGAAGGCTGAGGCTCAAGG  
AGAGGACGGTGTCCAGCTCAGCAGCAGACGTGGCGCCCGGACCTTCTCAGCAGGCTCCAGTCCAGCGT  
CTTCTCTGACAAAATGAAGCAGGAGGGACTGAAGAGCAGGAGGGTGGCAGATACAGCCATAAGAAGTCC  
CTTTCTGATGCCACCATGCTGATTCATAGCAGTGAAGGAGCAGGAGTGGAAAGGACAGCAGCAGAG  
AACAGGCCATCTCAGCTGTGTCTGAGCCCCGCTTACGGCCGCTTTCTCTCAGGAACTAACTACCCCTG  
TGCTTCAGCGACTCCGATCACTGGGCTCTGCATATTTTTGAGCCCAAGCCCATGTACAGAGCCTGAG  
AAGAGGGCAAAGGACATCAGCCCTGCCACCTGGTTGTGGAGACCCATCGGCCCGAAGAGATGGACTGC  
TGACCCCTCCATGTCCGAGTCACTCAGCCTCAGCCTCAGGAGGTACCGAGCTAGGAGGGACTCTGTCAA  
GAAAAGGCCAGTGTGAGCCTCCTCTCTGGGAAAAAAGCGCTGTGGAAGGACTTCGCCACTAGGGGGG  
ATGAAAAAACTCGAGCAGATGCAAAAAAATTGGTCCCCTCAAGCTGGCAGCCCTCAATGGGCTCTCC  
TGTCGCGCTGCCCTGCCTGATGAAGGAAAAGAGTGTCCACCAGAGCGACAAAATGACGAGAGGTGCAA  
GGTTCTGGAGCAGCGTTAGAGCAAGGCATGGTCTTACCAGAAATATGAGAGGATCCTTAAGAAGCGGCTG  
GTTGATGGTGAGTGTCTGACTGCCCGGCTCCCTGAAAAATGAGAGAGAAATCGATTTCAAGATGTCTCC  
CCTACGATGATGCGAGAGTCAAGTTGGTCCAACCAAGGAGAACAACTGGCTACATCAACGCGTCACA  
CATTAAAGTCTCTGTGAGCGAATAGAAATGGGATTATATTGCCACACAGGGACCATTACAAAATACCTGC  
CAGGACTTTTGGCAGATGGTGTGGGAACAGGGAGTCAATTATAGCAATGGTGACAGCAGAAGAGGAGG  
GAGGCCGGGAGAAGAGCTTTAGTACTGGCCACGGCTTGGTTCCAGGCACAACACTGTACCTATGGAAG  
GTTTAAGATCACACGCGCTTCCGCACGGACTCGGGCTGCTATGCCACCACAGGTTTGAAGATGAAGCAC  
CTTCTCACAGGGCAGGAGAGAACCCTTTGGCATCTTCACTACACAGACTGGCCTGAACACGGCTGTCCCG  
AAGACCTCAAAGGATTTTATCCTACCTTGAAGAGATCCAGTCACTTCGACGTCATACAAAACAGTACCAG  
TGAACCCAAAAGCCACAATCCCCGCTGCTGGTGCAGTGCAGTGGCGTGGGAAGAACTGGGGTCTGTC  
ATTCTGTCAGAGATCATGGTGCCTGTCTGGAACACAATGAGGTGCTGGACATCCCAGAGTGTGGACA  
TGCTGAGGCAGCAGAGGATGATGCTGGTGCAGACACTGGCCAGTACACCTTTGTGTACAGAGTGTCTAT  
TCAGTTCTGAAAAGCTCCAGGCTCATT

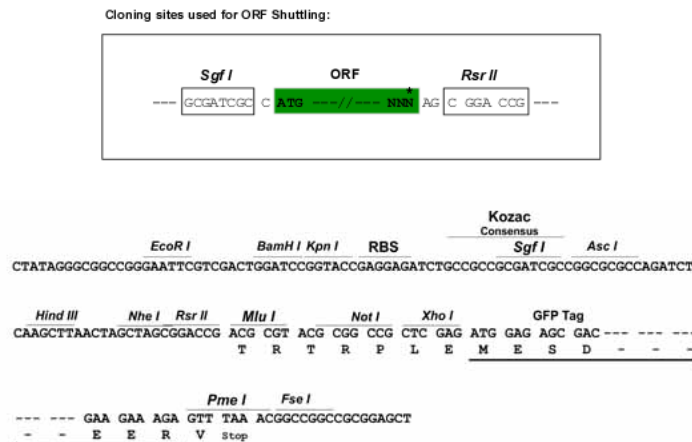
AGCGGACCGACGCGTACGCGGCCGCTCGAG - GFP Tag - GTTTAA

**Protein Sequence:** >MG217638 representing NM\_011877  
 Red=Cloning site Green=Tags(s)

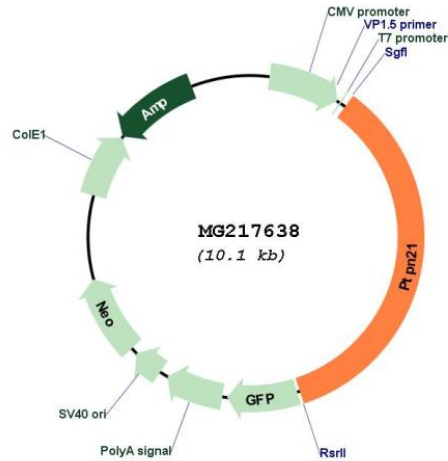
MPLPFGLKLRTRRYTVSSKSLVARIQLLNNEFVEFTLSVESTGQESLEAVAQRLELREVTYFSLWYYN  
 KQNQRWVDLEKPLKKQLDKHALEPTVYFGVLFYVPSVSQLQOEITRYQYYLQLKKDILEGNLPCTLEHA  
 IQLAGLAVQADFGDFDQYESQDFLQKFAALLPVAWLQDEKVL EEAQKVAL LHQKYRGLTAPAEALLYMQE  
 VERMDGYGEESYPAKDSQGS DISIGACLDGIFVKHKNGRPPVFRWHDIANM SHNK SFFALELANKEETI  
 QFQTEDMETAKYVWRLCVARHKFYRLNQCSLQTQAATLNSVRRGSSRMSLPKPQPYAMPPPPQLHYNGH  
 YTEPFASSQDNIFVPNKNGFYCHSQTSLDRTQIDL SGRIRNGSVYSAHSTNSLNTLQPYLQPSMSSNPS  
 ITGSDVMRPDIIPSHRSALIPPSYRTPDYETVMKQLNRGMVHADRHSHSLRNLNIGSSYAYSRPDALV  
 YSQPEIREHPLTSPQSAHYPFNLNYSFHSQSPYPYPAERRPVVAVSPEL TNVQLQAQDYPAPNIMRT  
 QVYRPPPPYPYR PANSTPDL SRHL YISSNPDLITRRVHHSVQTFQEDSLPVAHSLQEVSEPLTAAARHA  
 HLQKRNSIEIAGLTHGFEGLRLKERTVSASAADVAPRTFSAGSQSSVFSKMKQEGTEEQEGGRYSHKKS  
 LSDATMLIHSSEDEDLEEDSSREQAISAVSEPRLTAAF SQELNYPCASATPITGPLHIFEPKPHVTEPE  
 KRAKDIPSAHLVVETHRPRRDGLLTPSMSEDLTTSGRYRARRDSVKKRPVSDLLSGKKS AVEGLPPLGG  
 MKKTRADAKKIGPLKLAALNGLSLRSLPLPDEGKEVSTRATNDERCKVLEQRLEQGMVFTEYERILKKRL  
 VDGE CSTARLPENAERNRFQDVL PYDDARVELVPTKENNTGYINASHIKVSVSGIEWDYIATQGPLQNTC  
 QDFWQMVWEQGVAIIAMVTAEEEGGREKSFYWPRLGSRHNTVTYGRFKITTRFR TDSGCYATTGLKMKH  
 LLTGQERTVWHLQYTDWPEHGCPEDLKGFLSYLEEIQSVRRHTNSTSEPKSHNPPLL VHCSAGVGRGTGVV  
 ILSEIMVACLEHNEVLDIPRVL DMLRQQRMMLVQTLGQYTFVYRVL IQFLKSSRLI

SGPTRRRLE - GFP Tag - V

**Restriction Sites:** SgfI-RsrII  
**Cloning Scheme:**



Plasmid Map:



ACCN: NM\_011877

ORF Size: 3528 bp

OTI Disclaimer: The molecular sequence of this clone aligns with the gene accession number as a point of reference only. However, individual transcript sequences of the same gene can differ through naturally occurring variations (e.g. polymorphisms), each with its own valid existence. This clone is substantially in agreement with the reference, but a complete review of all prevailing variants is recommended prior to use. [More info](#)

OTI Annotation: This clone was engineered to express the complete ORF with an expression tag. Expression varies depending on the nature of the gene.

Components: The ORF clone is ion-exchange column purified and shipped in a 2D barcoded Matrix tube containing 10ug of transfection-ready, dried plasmid DNA (reconstitute with 100 ul of water).

Reconstitution Method:

1. Centrifuge at 5,000xg for 5min.
2. Carefully open the tube and add 100ul of sterile water to dissolve the DNA.
3. Close the tube and incubate for 10 minutes at room temperature.
4. Briefly vortex the tube and then do a quick spin (less than 5000xg) to concentrate the liquid at the bottom.
5. Store the suspended plasmid at -20°C. The DNA is stable for at least one year from date of shipping when stored at -20°C.

RefSeq: [NM\\_011877.2](#), [NP\\_036007.2](#)

RefSeq Size: 5697 bp

RefSeq ORF: 3531 bp

Locus ID: 24000

Cytogenetics: 12 E