

Product datasheet for **MG217610**

Ccnk (NM_009832) Mouse Tagged ORF Clone

Product data:

Product Type:	Expression Plasmids
Product Name:	Ccnk (NM_009832) Mouse Tagged ORF Clone
Tag:	TurboGFP
Symbol:	Ccnk
Synonyms:	AW123198; AW413594; CPR4; CycK
Mammalian Cell Selection:	Neomycin
Vector:	pCMV6-AC-GFP (PS100010)
E. coli Selection:	Ampicillin (100 ug/mL)



[View online »](#)

ORF Nucleotide Sequence:

>MG217610 representing NM_009832
 Red=Cloning site Blue=ORF Green=Tags(s)

TTTTGTAATACGACTCACTATAGGGCGGCCGGGAATTCGTCGACTGGATCCGGTACCGAGGAGATCTGCC
 GCC**CGGATCGCC**

ATGAAGGAGAACAAGAAAACCTCAAGCCCTTCAGTCACGTCAGCAAACCTGGACCACACAAAACCATGTT
 GGTACTGGGATAAGAAGGACCTAGCGCACACCCCTCACAACTTGAAGGACTCGATCCAGCCACTGAGGC
 CCGGTACCGCCGAGAGGGGGCTCGCTTCATCTTTGATGTGGGCACACGTTTGGGGTTACACTATGACACC
 CTGGCAACTGGAATCATTATTTTACCAGATTTTATATGTTCCATTCTTCAAACAATTCCTCAAGATACG
 TGACAGGAGCTTGTGTCTTTTTCTGGCTGGGAAAGTAGAGGAAACGCCAAAAAAGTGTAAAGATATCAT
 CAAAACGGCTCGTAGTTTATTAATGATGTCCAGTTTCGGCCAGTTTGGAGATGACCCAAAGGAAGAAGTC
 ATGGTGTGGAGAGGATCTTACTGCAGACCATAAAGTTTGACTTACAAGTAGAGCATCCGTACCAGTTCC
 TGCTCAAATATGCAAAGCAGCTCAAAGGTGATAAAAACAAAATTCAGAAGTTGGTTCAAATGGCATGGAC
 ATTTGTAATGACAGTCTCTGCACCACCCTGCTACTGCAGTGGGAACCAGAGATCATAGCTGTCGAGTA
 ATGTATCTTGGGGACGTTTGTGCAAATTTGAAATACAAGAGTGGACCTCAAACCCATGTATAGGAGAT
 GGTGGGAGCAGTTCGTTCAAGATGTCCCTGTTGACGTTCTGGAAGACATCTGCCACCAATCCTGGACCT
 TTACTIONAAGGGAAACAACAGATGCCTCATCACACCCTCATCAGCTGCAGCAGCCCCATCTCTTCAG
 CCTACACCACAAGTGCCCGAGGGGCCACAGTCCCAACCATCTCAAGGCTCAGAAGCAGCCAGCCTCCAC
 AGAAGGACTCGCAGCAGTCAGCCAGCAGCAACAGCAGCAAGCACAACAGCCAAAGAAACCATCCCTCA
 GCCCAGTCTCCCGACAGGCCAAGCGCGCCGTTGGTGGTTTCTCCAAGGAAGAGAACAAAGCTACAGAA
 CCACCACCACCTAAAATCCCAAACCTTGAGGCTACTACCCACCATTGCCTCCAGCACCCACCTC
 CAGACCCGAAGCCTCCCTCGCCCTGCCTTAGGTGAGGCTGAAGCAACTGGTCTGTGGAAACAAGTGA
 TCTCCCCAAAGTCCAGATTCCCCCTCAGCCACCCGGCCCTGTGCACCAGCCCCACCATTGCCACAT
 CGGCCACCACCCCGCCACCCTCCAGCTACATGACGGGGATGTCCACCACCAGCTCCTACATGTCAGGAG
 AGGGCTATCAGAGCCTGCAGTCCATGATGAAGACGGAGGGCCCTCCTATGGTGCCTGCCCCAGCCTA
 CGGCCACCTGCTCACCTAACCTACCACCCCATGTCTATCCCCCAACCCACCTCCACCTCCTGTTCT
 CCACCCAGCCTCCTTTCCCCACCCACCATTCTCCCCCTACCCAGGCTACCCTCCCCCTCCCCCTA
 CCTACAACCCCAATTTCCACCCCCACCCACGCTGCCCCAACTCATGCAGTCCCTCCTCACCTCC
 TCCAGGCTTGGGTTTGCACCAGCCAGTACCCACCTCCAGCTGTCCCCCTGGGGACAGCCCCCTGTT
 CCCCCACCATCCCCCCTGTTATGCCACCTGTTGGGGGGCTAGGGCGGGCGGCTGGATGAGA

ACGCGTACGCGGCCGCTCGAG - GFP Tag - GTTTAA

Protein Sequence:

>MG217610 representing NM_009832
 Red=Cloning site Green=Tags(s)

MKENKENS SVTSANLDHTKPCWYWDKDLAHTPSQLEGLDPATEARYRREGARFIFDVGTRLGLHYDT
 LATGIIYFHRFYMFHSFKQFPRVYTGACCLFLAGKVEETPKKCKDIKTARSLNDVQFGQFGDDPKEEV
 MVLERILLQTIKFDLQVEHPYQFLLKYAKQLKGDKNKIQLVQMAWTFVNDLCTTSLQWEPEIIAVAV
 MYLAGRLCKFEIQEWTSKPMYRRWWEQFVQDVPVDVLEDIHQILDLYSQGKQMPHHTPHLQPPSLQ
 PTPQVPQGPQSQSQSEAAQPPQKDSQSAQQQQQAQQPKKPSPPRQAKRAVVVSPKEENKATE
 PPPPPKIPKLEATHPPLPAHPPDRKPLAPALGEAEATGPVETSDLPKVQIPPAHPAPVHPPLPH
 RPPPPPPSSYMTGMSTTSSYMSGEGYQSLQSMKTEGPSYGALPPAYGPPAHLTYHPHVPPNPPPPVP
 PPPASFPPPTIPPTPGYPPPPPTYNPNFPPPPRLLPPTHAVPPHPPGLGLPPASYPVPPAVPPGQPPV
 PPIPPPMPPVGLGRAAWMR

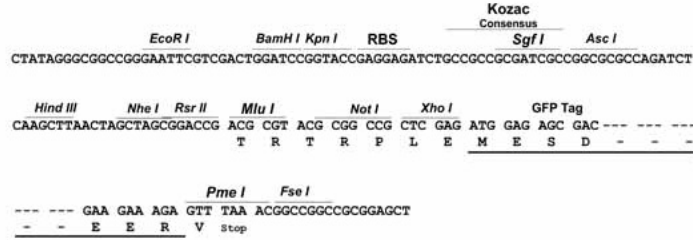
TRTRPLE - GFP Tag - V

Restriction Sites:

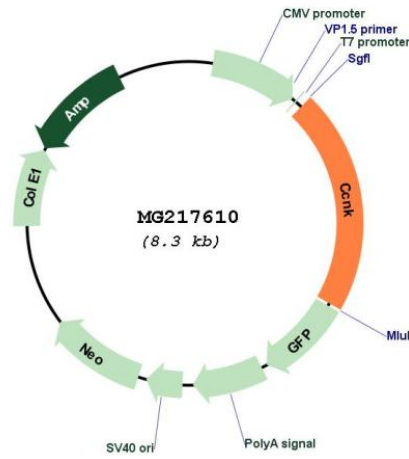
SgfI-MluI

Cloning Scheme:

Cloning sites used for ORF Shutting:



Plasmid Map:



ACCN: NM_009832
 ORF Size: 1746 bp

OTI Disclaimer: Due to the inherent nature of this plasmid, standard methods to replicate additional amounts of DNA in E. coli are highly likely to result in mutations and/or rearrangements. Therefore, OriGene does not guarantee the capability to replicate this plasmid DNA. Additional amounts of DNA can be purchased from OriGene with batch-specific, full-sequence verification at a reduced cost. Please contact our customer care team at custsupport@origene.com or by calling 301.340.3188 option 3 for pricing and delivery.

The molecular sequence of this clone aligns with the gene accession number as a point of reference only. However, individual transcript sequences of the same gene can differ through naturally occurring variations (e.g. polymorphisms), each with its own valid existence. This clone is substantially in agreement with the reference, but a complete review of all prevailing variants is recommended prior to use. [More info](#)

OTI Annotation: This clone was engineered to express the complete ORF with an expression tag. Expression varies depending on the nature of the gene.

Components: The ORF clone is ion-exchange column purified and shipped in a 2D barcoded Matrix tube containing 10ug of transfection-ready, dried plasmid DNA (reconstitute with 100 ul of water).

Reconstitution Method:

1. Centrifuge at 5,000xg for 5min.
2. Carefully open the tube and add 100ul of sterile water to dissolve the DNA.
3. Close the tube and incubate for 10 minutes at room temperature.
4. Briefly vortex the tube and then do a quick spin (less than 5000xg) to concentrate the liquid at the bottom.
5. Store the suspended plasmid at -20°C. The DNA is stable for at least one year from date of shipping when stored at -20°C.

RefSeq: [NM_009832.2](#), [NP_033962.2](#)

RefSeq Size: 2632 bp

RefSeq ORF: 1749 bp

Locus ID: 12454

Cytogenetics: 12 59.23 cM