

## Product datasheet for **MG217561**

### **Hnrnpm (NM\_029804) Mouse Tagged ORF Clone**

#### **Product data:**

Product Type:	Expression Plasmids
Product Name:	Hnrnpm (NM_029804) Mouse Tagged ORF Clone
Tag:	TurboGFP
Symbol:	Hnrnpm
Synonyms:	2610023M21Rik; AA409009; Hnrpm; mKIAA4193
Mammalian Cell Selection:	Neomycin
Vector:	pCMV6-AC-GFP (PS100010)
E. coli Selection:	Ampicillin (100 ug/mL)



[View online »](#)

**ORF Nucleotide Sequence:**

>MG217561 representing NM\_029804  
 Red=Cloning site Blue=ORF Green=Tags(s)

TTTTGTAATACGACTCACTATAGGGCGGCCGGGAATTCGTCGACTGGATCCGGTACCGAGGAGATCTGCC  
 GCC**CGCATCGCC**

ATGGCGGCAGGGTCTGAAGCGGCAGCCGAAGTGGCGGCACAGAACCCTAAATGGAGGAAGAGAGCGGCCG  
 CGCCCTGCGTGCCGAGCGCAACGGAGCTCCGGGCCCGAAGGGTGAAGAACGACCTACTCAGAATGAGAA  
 GAGGAAGGAGAAAAACATAAAAAAGAGGAGGCAATCGCTTTGAGCCATATCCAACCCAACATAAAAGATAC  
 AGAGCCTTCATTACAAATATACCTTTTGTGTAATGGACGCTCAAGGAAAGTCAAGGGGATGTGCTGTTGTA  
 TTGGTGAGGTAACATACGTGGAGCTCTTAATGGACGCTGAAGGAAAGTCAAGGGGATGTGCTGTTGTA  
 ATTCAAGATGGAGGAGAGCATGAAAAAGCTGCTGAAGTCTAAACAAGCATAGTCTGAGTGAAGGCCA  
 CTGAAAGTCAAGGAAGATCCTGATGGTGAACATGCAAGGAGAGCAATGCAAAAGGTGATGGCTACGACTG  
 GTGGGATGGGTATGGGACCAGGTGGCCAGGAATGATTAATATCCACCCAGTATCTAAATAATCTAA  
 CATCCCAATGAGATTATCCATGCATTACAGGCTGGAAGACTTGAAGCACAGTATTTGTAGCAAATCTG  
 GATTATAAAGTTGGCTGGAAGAACTGAAGGAAGTATTTAGTATGGCTGGTGTGGTGGTCCGAGCAGACA  
 TTCTGGAAGATAAAGATGGGAAAAGTCTGGAATAGGCATTGTGACTTTTGAACAGTCCATTGAAGCTGT  
 GCAAGCAATATCTATGTTAATGGCCAGTTGCTGTTTGTAGACCGATGCACGTCAAGATGGATGAGAGG  
 GCTTTACCAAAGGGAGACTTTTTTCTCTGAACGCCACAGCAACTTCCCCATGGACTTGGTGGTATTG  
 GCATGGGATTAGGACCTGGAGGTGAGCCTATTGATGCCAACCATCTGAGCAAAGGCATTGGAATGGGAAA  
 CCTAGGACCTGCAGGGATGGGAATGGAAGGCATAGGATTTGGAATAAATAAAATGGAGGCATGGAAGGA  
 CCCTTTGGTGGTGGTATGAAAAACATGGGCCGATTTGGATCCGGGATGAACATGGGCCGAATAAATGAAA  
 TCCTAAGTAATGCACTGAAGAGAGGAGAGATCATTGCAAAACAGGGAGGAGGTGGAGCTGGAGGCATGT  
 CCTGGGATCGAGAGGATGGGCCCTGGCATTGACCGCATTAGCGGTGCTGGCATGGAGCGCATGGGCGCA  
 GGCTTAGGCCATGGCATGGATCGAGTGGCTCTGAGATTGAGCGCATGGGCTGGTTCATGGACCGCATGG  
 GCTCAGTTGAGCGCATGGGCTCCAGCATTGAGCGCATGGGCCACTAGGCCTTGACCACATGGCCTCCAG  
 TATTGAGCGCATGGGCCAGACCATGGAGCGCATTGGTTCTGGCGTGGAGCGCATGGGTGCCGGCATGGGC  
 TTCGGCTGGAGCGCATGGCCGACCCATTGACCGTGTGGCCAAACCATTGAGCGCATGGGCTCTGGTG  
 TAGAGCGCATGGGCTCTGCCATTGAACGCATGGGCTAAGCATGGATCGGATGGTCCCACAGGCATGGG  
 GGCCAGCCTGGAGCGCATGGGCTCTGTGATGGATCGGATGGCCACCGCCTGGAGCGCATGGGCGCCAAC  
 AACCTGGAGCGCATGGGCTGGAGCGTATGGGAGCCAACAGTCTTGGAGCGCATGGGCTGGAGCGAATGG  
 GCGCCAACAGCCTGGAACGTATGGGCCCTGCCATGGGCCAGCATTGGGCGCTGGTATTGAGCGAATGGG  
 CCTGGCCATGGGTGGAGCCGGAGGTGCTAGCTTTGACCGAGCCATTGAGATGGAGCGGGCAACTTTGGA  
 GGAAGCTTCGAGGTTCTTTGGCGGAGCTGGAGGCCATGCACCTGGAGTAGCCAGGAAGGCCTGCCAGA  
 TATTTGTGAGAAATCTCCATTTGATTTACATGGAAGATGCTAAAGGACAAGTTCAATGAATGTGGCCA  
 CGTGCTGTACGCCGACATCAAGATGGAGAACGGAAGTCCAAGGGGTGCGGTGTGGTTAAGTTTGAAGTCT  
 CCAGAGGTGGCTGAGAGAGCCTGCCGGATGATGAATGGCATGAAGCTGAGTGGCCGAGAGATTGATGTT  
 GAATTGATAGAAATGCT

**ACGCGTACGCGGCCGCTCGAG** - GFP Tag - GTTTAA

Protein Sequence: >MG217561 representing NM\_029804  
 Red=Cloning site Green=Tags(s)

MAAGVEAAAEVAATEPKMEEESGAPCVPSGNGAPGPKGEERPTQNEKRKEKNIKRGGNRFEPYSNPTKRY  
 RAFITNIPFDVKWQSLKDLVKEKVGVEVYVELLMDAEGKSRGCAVVEFKMEESMKKAAEVLNKHLSGRPL  
 LKVKEDPDGEHARRAMQKVMATTGGMGMPGGPGMINIPPSILNPNIPNEIIHALQAGRLGSTVVFVANL  
 DYKVGWKKLKEVFSMAGVVVRADILEDKDGKSRGIGIVTFEQSIEAVQAI SMFNGQLL FDRPMHVKMDER  
 ALPKGDFPFRPQQLPHLGGIGMGLGPGGQPIDANHL SKGIGMGNLGPAGMGMEGIGFGINKIGGMEG  
 PFGGGMENMGRFGSGMNMGRINEILSNALKRGEIIAKQGGGGAGGSVPGIERMGPIDRISGAGMERMGA  
 GLGHGMDRVGSEIERMGLVMDRMGSVERMGSSIERMGLDHDHMASSIERMGQTMERIGSGVERMGAGMG  
 FGLERMAAPIDRVGQTIERMGSVERMGPAIERMGLSMDRMVPTGMGASLERMGPVMDRMATGLERMGAN  
 NLERMGLERMGANSLERMGLERMGANSLERMGPAMGPALGAGIERMGLAMGGAGGASFDRAIEMERGNFG  
 GSFAGSFGGAGGHAPGVARKACQIFVRNLPDFD TWKMLKDKFNECGHVL YADIKMENGKSKGCGVVKFES  
 PEVAERACRMNGMKLSGREIDVRIDRNA

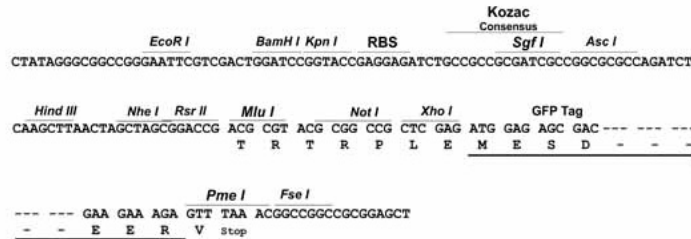
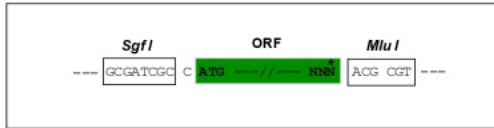
TRTRPLE - GFP Tag - V

Chromatograms: [https://cdn.origene.com/chromatograms/ja2487\\_c06.zip](https://cdn.origene.com/chromatograms/ja2487_c06.zip)

Restriction Sites: Sgfl-MluI

Cloning Scheme:

Cloning sites used for ORF Shutting:

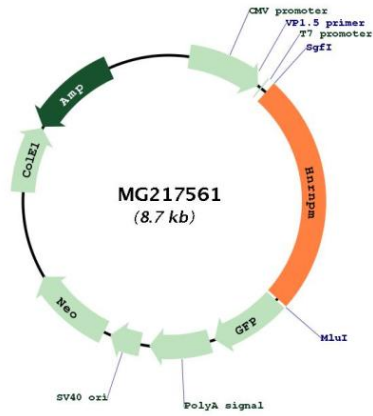


ACCN: NM\_029804

ORF Size: 2187 bp

<b>OTI Disclaimer:</b>	<p>Due to the inherent nature of this plasmid, standard methods to replicate additional amounts of DNA in E. coli are highly likely to result in mutations and/or rearrangements. Therefore, OriGene does not guarantee the capability to replicate this plasmid DNA. Additional amounts of DNA can be purchased from OriGene with batch-specific, full-sequence verification at a reduced cost. Please contact our customer care team at <a href="mailto:custsupport@origene.com">custsupport@origene.com</a> or by calling 301.340.3188 option 3 for pricing and delivery.</p> <p>The molecular sequence of this clone aligns with the gene accession number as a point of reference only. However, individual transcript sequences of the same gene can differ through naturally occurring variations (e.g. polymorphisms), each with its own valid existence. This clone is substantially in agreement with the reference, but a complete review of all prevailing variants is recommended prior to use. <a href="#">More info</a></p>
<b>OTI Annotation:</b>	This clone was engineered to express the complete ORF with an expression tag. Expression varies depending on the nature of the gene.
<b>Components:</b>	The ORF clone is ion-exchange column purified and shipped in a 2D barcoded Matrix tube containing 10ug of transfection-ready, dried plasmid DNA (reconstitute with 100 ul of water).
<b>Reconstitution Method:</b>	<ol style="list-style-type: none"> <li>1. Centrifuge at 5,000xg for 5min.</li> <li>2. Carefully open the tube and add 100ul of sterile water to dissolve the DNA.</li> <li>3. Close the tube and incubate for 10 minutes at room temperature.</li> <li>4. Briefly vortex the tube and then do a quick spin (less than 5000xg) to concentrate the liquid at the bottom.</li> <li>5. Store the suspended plasmid at -20°C. The DNA is stable for at least one year from date of shipping when stored at -20°C.</li> </ol>
<b>RefSeq:</b>	<a href="#">NM_029804.3</a> , <a href="#">NP_084080.1</a>
<b>RefSeq Size:</b>	2532 bp
<b>RefSeq ORF:</b>	2190 bp
<b>Locus ID:</b>	76936
<b>UniProt ID:</b>	<a href="#">Q9D0E1</a>
<b>Cytogenetics:</b>	17 B1
<b>Gene Summary:</b>	<p>Pre-mRNA binding protein in vivo, binds avidly to poly(G) and poly(U) RNA homopolymers in vitro. Involved in splicing. Acts as a receptor for carcinoembryonic antigen in Kupffer cells, may initiate a series of signaling events leading to tyrosine phosphorylation of proteins and induction of IL-1 alpha, IL-6, IL-10 and tumor necrosis factor alpha cytokines (By similarity). [UniProtKB/Swiss-Prot Function]</p>

Product images:



Circular map for MG217561