

Product datasheet for **MG217553**

Tom1 (NM_001136259) Mouse Tagged ORF Clone

Product data:

| | |
|---------------------------|--|
| Product Type: | Expression Plasmids |
| Product Name: | Tom1 (NM_001136259) Mouse Tagged ORF Clone |
| Tag: | TurboGFP |
| Symbol: | Tom1 |
| Mammalian Cell Selection: | Neomycin |
| Vector: | pCMV6-AC-GFP (PS100010) |
| E. coli Selection: | Ampicillin (100 ug/mL) |



[View online »](#)

ORF Nucleotide Sequence:

>MG217553 representing NM_001136259
 Red=Cloning site Blue=ORF Green=Tags(s)

TTTTGTAATACGACTCACTATAGGGCGGCCGGAATTCGTCGACTGGATCCGGTACCGAGGAGATCTGCC
 GCC**GCGATCGCC**

ATGGACTTTCCTCTGGGAAATCCGTTCCAGCTCTCCGGTGGGACAACGGATCGAGAAAGCTACAGATGGT
 CCCTGCAGAGCGAGGACTGGGCCCTCAACATGGAAATCTGTGACATCATCAACGAGACGGAGGAAGGCC
 CAAAGATGCCTCCGAGCAGTGAAGAAGCGAATTATGGGAATAAGAATTTCCATGAGGTCATGCTGGCC
 CTTACGGTCTTGAAACATGTGTTAAGAACTGTGGGCACCGCTTCCATGTAAGTGGCCAAACAGGACT
 TTGTAGAGAATGTGCTGGTGGAGACCATCTGCCGAAGAACAATCCACCCACCATTTGTGCATGACAAGGT
 GTTGAACCTCATCCAGTCTGGGCTGACGCGTTCGCGAGCTCACCTGATTTGACAGGTGTTGTTGCTGTC
 TACGAGGACCTGCGAAGGAAGGGCTAGAATTTCCATGACTGACCTGGACATGCTGTCGCCATCCACA
 CACCCAGAGAACTGTATCAACTCAGAGACCATCCAGACAGAACTCTGTGAGTTCCAACACCAGTCA
 GCGTGGAGACCTGAGCCAGCATGCCACCCCTCTGCCACTCCAGCTGTTCTCCCGGTGACTCACCCATC
 ACACCGACTCCTGAGCAGATTGGGAAGCTGCGCAGTGAGCTGGAGATGGTGGAGCGAAACGTCGAGTGA
 TGTGAGAGATGCTGACAGAGCTGGTGCCACCCAGGTAGAGCCTGCAGACCTGGAGCTACTACAGGAACT
 GAACCGCACCTGCCGTGCCATGCAGCAGCGGATCCTGGAGCTTATCCCACGCATCTCCAATGAGCAGCTG
 ACGGAGGAGCTGCTCATGATCAACGACAACCTCAACAACGTGTTTCTGCGCCATGAACGGTTTGAACGCT
 TCCGAACAGGCCAGACTGCTAAGGCCTCCAGTGAAGCTGAGCTAGCTACTGACCTGATTGACATGGGTCC
 TGACCCCGCAGCCACAACAACCTCTCATCTCAACTGGCAGGAATGAACAATCGACTGCTCAGCCTCAGT
 AATCACTTCTACTTGAAGAAGGAAAGAAGGAATGGGCCCTCTTCAAGACCTGGCTCCAGAAGTGTGA
 GAGCTGGCCTGCAGTCTCTGGAGACCTCAGGTCACCTGGAAGATGACTTTGACATGTTTGTCTGACTCG
 GGGCAGCTCACTGGCTGACCAACGGAAGGGGTCAAATATGAAGCTCCCCAACCCACAGATGGCCTGGCT
 GGGCCCTAGATGCCCGGCAGCAGAGCACCGGAGCGATCCAGCCACTCAGGCCCGCATCATGGAGGACA
 TTGAGCAGTGGCTGTCCACAGATGTGGGAAACAGTGTGAGGAGCCCTCTGGTGTACCAGTGAAGAATT
 TGACAAATTTCTGGAAGAACGAGCCAAAGCTGCTGATCGACTTCCAACCTGGCCAGCCCTTACGCCGAG
 GGACCCCGCAGACCATCTCCTGGAACAGCCCTCGGAGGAAGACCCAGGAGAAGGACGATGACATGCTGT
 TTGCCTTA

AG**GCGACCG**ACGCGTACGCGGCCGCTCGAG - GFP Tag - GTTTAA

Protein Sequence:

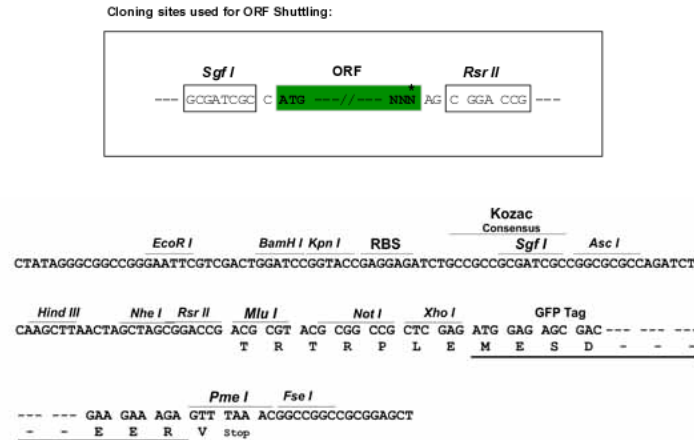
>MG217553 representing NM_001136259
 Red=Cloning site Green=Tags(s)

MDFLLGNPFSSPVGQRIEKATDGSLSQEDWALNMEICDIINETEEGPKDAFRAVKKRIMGNKNFHEVMLA
 LTVLETVCVKNCGHRFHVLVANQDFVENLVRTLILPKNNPPTIVHDKVLNLIQSWADAFRSSPDLTGVVAV
 YEDLRRKGLFPMTDLDMLSPIHTPQRTVFNSETPSRQNSVSSNTSQRGDLQSHATPLPTPAVLPGDSPI
 TPTPEQIGKLRSELEMVSGNVRVMSEMLTEL VPTQVEPADLELLQELNRTC RAMQQRIE LELIPRISNEQL
 TEELLMINDNLNNVFLRHERFERFRTGQTAKASSEAE LATDLIDMGPDPAATNNLSSQLAGMNNRLLSLS
 NHFLLEEKKEWAPLQDLGSRSVRAGLQSLETSGHLEDDFDMFALTRGSSLADQRKGVKYEAPQTTDGLA
 GALDARQQSTGAIPATQARIMEDIEQWLSTDVGNSAEPEPSVGTSEEFDFLEERAKAADRLPNLASPSAE
 GPPRPSPGTAPRRKTQEKDDMLFAL

SGP**TRRRLE** - GFP Tag - V

Restriction Sites:

Sgfl-RsrII

Cloning Scheme:


ACCN: NM_001136259

ORF Size: 1548 bp

OTI Disclaimer: The molecular sequence of this clone aligns with the gene accession number as a point of reference only. However, individual transcript sequences of the same gene can differ through naturally occurring variations (e.g. polymorphisms), each with its own valid existence. This clone is substantially in agreement with the reference, but a complete review of all prevailing variants is recommended prior to use. [More info](#)

OTI Annotation: This clone was engineered to express the complete ORF with an expression tag. Expression varies depending on the nature of the gene.

Components: The ORF clone is ion-exchange column purified and shipped in a 2D barcoded Matrix tube containing 10ug of transfection-ready, dried plasmid DNA (reconstitute with 100 ul of water).

Reconstitution Method:

1. Centrifuge at 5,000xg for 5min.
2. Carefully open the tube and add 100ul of sterile water to dissolve the DNA.
3. Close the tube and incubate for 10 minutes at room temperature.
4. Briefly vortex the tube and then do a quick spin (less than 5000xg) to concentrate the liquid at the bottom.
5. Store the suspended plasmid at -20°C. The DNA is stable for at least one year from date of shipping when stored at -20°C.

RefSeq: [NM_001136259.1](#), [NP_001129731.1](#)

RefSeq Size: 2358 bp

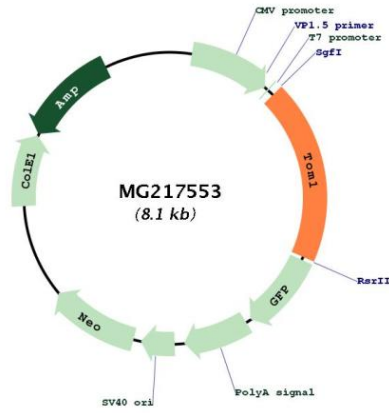
RefSeq ORF: 1551 bp

Locus ID: 21968

Cytogenetics: 8 C1

Gene Summary: May be involved in intracellular trafficking. Probable association with membranes. [UniProtKB/Swiss-Prot Function]

Product images:



Circular map for MG217553