

## Product datasheet for **MG217534**

### **Kctd1 (NM\_001142731) Mouse Tagged ORF Clone**

#### **Product data:**

Product Type:	Expression Plasmids
Product Name:	Kctd1 (NM_001142731) Mouse Tagged ORF Clone
Tag:	TurboGFP
Symbol:	Kctd1
Synonyms:	4933402K10Rik; AI661543; AW553000
Mammalian Cell Selection:	Neomycin
Vector:	pCMV6-AC-GFP (PS100010)
E. coli Selection:	Ampicillin (100 ug/mL)



[View online »](#)

**ORF Nucleotide Sequence:**

>MG217534 representing NM\_001142731  
 Red=Cloning site Blue=ORF Green=Tags(s)

TTTTGTAATACGACTCACTATAGGGCGGCCGGGAATTCGTCGACTGGATCCGGTACCGAGGAGATCTGCC  
 GCC**CGGATCGCC**

ATGGCGAGAATGCCTGGCAGCGGGGACTGTAACACCAGCGCGGGCGGAGCGCCGCTGCTCGGCCGAGA  
 ACAATGGGGATCGGGGTGAGGGTGAAGCGGGGGCCGGGGCCCGCGCCGCTACGGCCCGCCGATTA  
 CTGCAGCGCGGGCGAGGAGGAGGAGGAAGAGGAGGAGGACGAGATCCAGGAGGTGCAGATAACGGGG  
 GACGAGGAGGAGGACGGAGGTGGGGGGTGGAGGAGGACGAGGAGGAGGAAGAGGAGGAGATGGGGA  
 TGGACTGGGAAGAGCCCTGGAGCCGGAGGACTCGGCCGGGAGGAGCTGGAGCCGGAGCCGGTCCATAT  
 GATCCATATGGACCAGAGCGCCGCTGGAGCCCGAGGCGCCACGACTGTTGGCGCCCGGGCCCGC  
 GCGGGGCCCGGGGACAGCGGGAGCTGGACCCGACGTGCTGCAGCGCCCGAGCGGGCCCGGCTGA  
 GCGAGAACCAGGCTGGCCACCCGCTACGCCGTGCGCATCTTCCGGGAGTACCTGAGCGAAAAGGCTCA  
 GAGCCCGACTTCGAGACCATGGACAAGGGGGCGCTGTGCCGCTGCTGCGCTCTTCTATGCCGAGGCC  
 CGTTCTAAGAGCGGCCAGCTCTACAGCAAGTCTCGCTCATCAGTATCCGAGCTCCCTCAACCGCTACC  
 TCAACGAGCCCTTACTGTCGACGCTCGACCTCACCAAGGACCCCGAGCTGCGCAGCGCAACCTGAC  
 GCTGGCCGAGTCATCCGCAAGCTCGAGGAGCAGGGCGCGGGGCCGTTGGTGCAGAAGCAAGCCATCACG  
 CGCGCCGACCTGCGCAAGCTCTACACCTCCAGCGTCTTACGACCAACACGCCCTTTGGGCTGCTCAACA  
 AGGTCTGGTTCGAGACGTGCATGTAATTCTGCACGCGAGGCCGTGAGAACCAGCGCGAGCTGGAGGAGGA  
 CTCCTTCGGGCTGGCCATGGACGAGGACGGTCGCAAGTTCGTTTACTTCAAGTCGTTGGGCCTTACCAT  
 AAGTCGCGTTCCTCGTCTGGAGTAAGAAGCGTGGGAGAGCAGCGACGAAGAGAAGTTCCTCGCATGT  
 ACGAGACGGGCACTGAGTTCGTCCCTACGCCAGCTTTGTCAAGTACCTGTCTAAGCGCAATCCCCTCTG  
 TAAGGCGTTTTTCCAGCGGCCCGGGACCCTGCAGTGAGGGCGATGTGACATGGTACGAGAACAAGCC  
 ATAGGCAAGAAGTTCGTTGGCACCAGGATGCAGATGCTGTCCAAGGCAGCCAAGCTGTCCAAGACCTACA  
 CTAACCATTGCATCGCGCGGTGTCCATCGCCACACTCAACAGCATCGCGGGTATCGGGACCAAGCTAGG  
 CTCCCCAGCCCCGAGGGCTGCTATACCGACTCTCTGAACGGGTGAGCTCGTACCACCTCCACCACGCT  
 CCCACCATCCTTCCCACCACCAGCCCGCCCGCCCTCGCTGGGTAACACTTATATCTCCCCAAAG  
 ACAGCCAGGTGGGCCCGACGTGAAGTCCGAGGCGGCCCAAGCGCACGCTGTACGAGTCAGTGTTCGG  
 GTCAGGGGAAATCTCGGCCCTTCTTCCCCAAAAGACTTGTATCCGTCCCTCCTCGAACCTGTGGAT  
 GCGGTGGTGGTGGTTTCCGTGAAACACGACCCCTGCCTTCTTCCAGAAGTCAATGGGCACCGAAGCA  
 CCAATTCTCCACCATAGTTTACCTGCTATTGTTTCCCCGCCAGGACAGTCGGCCCAATATGTCAAG  
 ACCTCTGATCACTCGATCCCCTGCATCGCCACTGAACAACCAAGGCATTCCAACCTCCAGCTCAGCTCACC  
 AAATCCAACGCACCCGTCCACATCGACGTGGGCGGCCACATGTACACCAGCAGCCTGGCCACCCTCACCA  
 AATACCCCGAATCCAGAATCGGAAGACTCTTGTGATGGTACAGAGCCCATTTGTTCTGGACAGTCTCAACA  
 GCACTATTTTATTGACAGAGACGGGCGAGATGTTTCAAGATATCTTGAATTTTCTACGAACATCAAAACTC  
 CTCATTCTGATGATTTCAAGGACTATACTTTGTTATATGAAGAGGCAAAATACTTTCAACTTCAGCCAA  
 TGTTGTTGGAGATGGAGCGATGGAACAGGACAGGAAACTGGCCGCTTTTACGGCCCTGCGAGTGCCT  
 CGTGGTGGTGTGGCCCCGACCTTGGAGAAAGGATCACCTCAGTGGGACAAGTCTTGTATAGAGGAA  
 GTATTTCCCGAGATCGGGGATGTGATGTGCAACTCGGTCAATGCAGGCTGGAATCACGACTCAACACATG  
 TCATCAGGTTTCACTAAACGGCTACTGCCACCTCAATTCAGTTCAGGTCCTTGAGCGGTTGAGCAAAG  
 AGGATTTGAAATTGTGGTTCTGTGGAGGAGGAGTGGACTCGTCCAGTTCAGTGAATATGTCCTCCGA  
 CGGGAAGTGAAGCGGACACCCCGAGTACCCTCAGTCATCCGGATAAAACAGGAGCCACTGGAC

**ACGCGTACGCGGCCGCTCGAG** – GFP Tag – GTTTAA

**Protein Sequence:** >MG217534 representing NM\_001142731  
 Red=Cloning site Green=Tags(s)

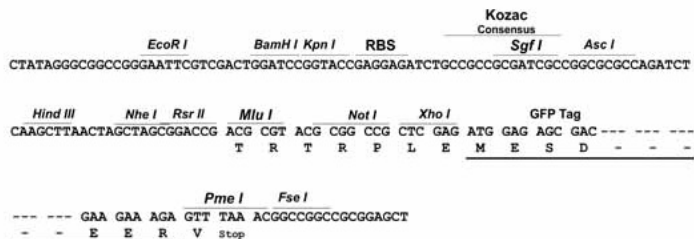
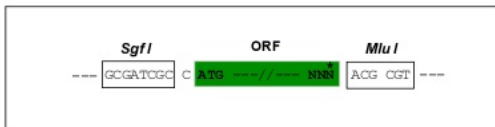
```
MARMPGSGDCNTSAGGSAAAAAENNGDRGEGERGAGGRGRRYGRPHYCSAGEEEEEEEEEDEIQEVQITG
DEEEDGGGLEEEDEEEEEEMGMDWEEPLEPEDSAGEELEPEPVHMIHMDQSAALEPEAPRLLAPRAR
AGPPGDSAELDPDVLQRPERARLSENTRLATRYAVRIFREYLSEKAQSPDFETMDKGALCRVLRSFYAEA
RSKSGQLYSKSSLSIRSSLNRYLNEPPYCRTLDTKDPELRSANLTLAAVIRKLEEQGAGPVVQKQAIT
RADLRKLYTSSVFSTNTPFGLLNKVVWFETCMYFCTRGRNQRELEEDSFGLAMDEDGRKFVYFKSLGPYH
KSRSSWSKKRAESSDEENLPRMYETGTEFCPYASFVKYLSKRNPCKAFFQRPRDHCSEGDVTWYENKA
IGKNLLGTRMQMLSKAAKLSKTYTNHCIGAVSIATLNSIAGIGTKLGSPAPQGCYTDSLNGSARHSHHA
PTHPSHHHRPQPPSLGNTYILPKDSQVGPDKSEAAPKRTLYESVFGSGEICGPSSPKRLCIRPSSEPVD
AVVVVSVKHDPLPLPEVNGHRSTNSPTIVSPAIVSPAQDSRPNMSRPLITRSPASPLNNQGIPTPAQLT
KSNAPVHIDVGGHMYTSSLATLTKYPESRIGRLFDGTEPIVLDLQHYFIDRDGQMFYILNFLRTSKL
LIPDDFKDYTLLEYEAKYFQLQPMLEMERWKQDRETGRFSRPCECLVVRVAPDLGERITLSGDKSLIEE
VFPEIGDVMCNSVNAGWNHDSTHVIRFPLNGYCHLNSVQVLERLQQRGFEIVGSCGGGVDSQFSEYVLR
RELRRTPRVPSVIRIKQEPLD
```

TRTRPLE - GFP Tag - V

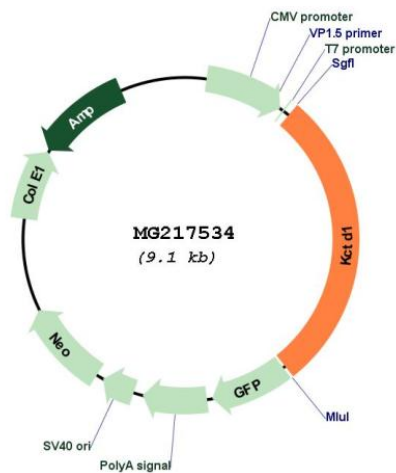
**Restriction Sites:** Sgfl-MluI

Cloning Scheme:

Cloning sites used for ORF Shutting:



Plasmid Map:



<b>ACCN:</b>	NM_001142731
<b>ORF Size:</b>	2583 bp
<b>OTI Disclaimer:</b>	The molecular sequence of this clone aligns with the gene accession number as a point of reference only. However, individual transcript sequences of the same gene can differ through naturally occurring variations (e.g. polymorphisms), each with its own valid existence. This clone is substantially in agreement with the reference, but a complete review of all prevailing variants is recommended prior to use. <a href="#">More info</a>
<b>OTI Annotation:</b>	This clone was engineered to express the complete ORF with an expression tag. Expression varies depending on the nature of the gene.
<b>Components:</b>	The ORF clone is ion-exchange column purified and shipped in a 2D barcoded Matrix tube containing 10ug of transfection-ready, dried plasmid DNA (reconstitute with 100 ul of water).
<b>Reconstitution Method:</b>	<ol style="list-style-type: none"><li>1. Centrifuge at 5,000xg for 5min.</li><li>2. Carefully open the tube and add 100ul of sterile water to dissolve the DNA.</li><li>3. Close the tube and incubate for 10 minutes at room temperature.</li><li>4. Briefly vortex the tube and then do a quick spin (less than 5000xg) to concentrate the liquid at the bottom.</li><li>5. Store the suspended plasmid at -20°C. The DNA is stable for at least one year from date of shipping when stored at -20°C.</li></ol>
<b>RefSeq:</b>	<a href="#">NM_001142731.1</a> , <a href="#">NP_001136203.1</a>
<b>RefSeq Size:</b>	3456 bp
<b>RefSeq ORF:</b>	2586 bp
<b>Locus ID:</b>	106931
<b>Cytogenetics:</b>	18 A1
<b>Gene Summary:</b>	May repress the transcriptional activity of AP-2 family members, including TFAP2A, TFAP2B and TFAP2C to various extent.[UniProtKB/Swiss-Prot Function]