

## Product datasheet for **MG217527**

### Mospd2 (NM\_029730) Mouse Tagged ORF Clone

#### Product data:

Product Type:	Expression Plasmids
Product Name:	Mospd2 (NM_029730) Mouse Tagged ORF Clone
Tag:	TurboGFP
Symbol:	Mospd2
Synonyms:	2410013I23Rik
Mammalian Cell Selection:	Neomycin
Vector:	pCMV6-AC-GFP (PS100010)
E. coli Selection:	Ampicillin (100 ug/mL)



[View online »](#)

**ORF Nucleotide Sequence:**

>MG217527 representing NM\_029730  
 Red=Cloning site Blue=ORF Green=Tags(s)

TTTTGTAATACGACTCACTATAGGGCGGCCGGAATTCGTCGACTGGATCCGGTACCGAGGAGATCTGCC  
 GCC**CGGATCGCC**

ATGGCCGAGAATAACGCTCAGAATAAGCCAAGCTAATCTCAGAGACCCGCGGAGATTCGAAGCTGAGT  
 ATGTGACAGAAAAGTCAGAAAAATATGATTCACGTGATGTTGAAAGGCTTCAGCAAGATGATAACTGGGT  
 TGAAAGTTACTTATACTGGAGACATAACGTTGTGGATGAAACCCCTGAAGATGCTTGACGAGAGTTTTTCAG  
 TGGAGGAAAGAGTTCTCTGTCAATGACCTTAGTGAATCCTCTATTCCAAGATGGTTATTAGAACTTGGTG  
 GTATTTATCTCCATGGTTATGACAAAGAAGGTAACAAATTATTCTGGATCAGAGTGAAGTATCACATAAA  
 AGATCAGAAAACCATAATGGACAAGAAGAAGCTCATAGCATTCTGGTTGGAACGATATGCCAAGAGAGAA  
 AACGGGAAACCTATCACAGTGATGTTTGACATGCCGAACTGGACTCAATAGCATAGACATGGACTTTG  
 TACGATTTATCATCAACTGCTTTAAGGTGATTACCCCAATACCTCTCAAAAAATAGTGATCTTTGATAT  
 GCCTTGGATAATGAATGTGCTTTCAAAATTGTGAAAAGCTGGCTTGGCCCCGAAGCAGTAAAGCTTGTG  
 AAGTTTACAAGTAAGAATGAAATCCAGGAGTATGTCAGTGTGGAATACCTGCCTCCACATGGGTGGGA  
 CAGATCCATTCAAGTATAGCTACCCACCACTGGTAGATGACTTCCAGACACCACTTTGTGAAAAATGG  
 GCCAATTGCCAGTGAGGATGAAACCTCAAGTAAGGAAGATATAGAAGGTGATGGTAAGGAAACCTTGAA  
 ACGATTTCTAATGAGGAGCCACCAGCTCTGTCTGAAAAGAGTAACCCAATGAGTCTGTTTCAAAAAAG  
 ATGAAAATGAAAAGTTGATTCAAAGACGAAAACCTTTTAAAAAGCCATTGAGTGTTTTTAAAGGACCCCT  
 ATTACACATCAGCCAGCAGAGGAATTATTTTTGGAAGCATTGAATCTGGAGAGAAGAAAACCTGATA  
 GTGTTGACAAATGTCACAAAAAATTTGTGGCCTTTAAGGTGAGAACCACAGCTCCAGAAAAATACAGGG  
 TCAAGCTAGCAACAGCAGCTCGATCCCGGACCTTCCATTGATATCATCGTTTTCCACACGGAGTTT  
 AACCGTCTCAGCTCAAGACCGGTTCTGTGATCATGGCTGCCGAAATGGAGCAGTCATCTGGCACTGGGCT  
 GCAGAACTGAGTCAGTTCTGAAAAGAGTTTCCAAGAAACAAGGTGATGGAGCACAGGCTAAGATGTCACA  
 CCGTTGAGAGCAGCAAACCGAACAGTCTCATGCTGAAGGACAGCATTTCACCATGTCAGATAAAACCGAG  
 TGAAGTCTGTACCTGCAACTCAATCGTTTACTAGAAAGCAATAGGAAACTGGAAGACCAACTACAGCGC  
 TCTATCTGGTTCCAACAGCTACTGCTTGCCTTAACAATGGTCTTGCTTGTGTTTTGTTCTTTCTTTT  
 ATTCATTATACAAT

**ACGCGTACGCGGCCGCTCGAG** – GFP Tag – GTTTAA

**Protein Sequence:**

>MG217527 representing NM\_029730  
 Red=Cloning site Green=Tags(s)

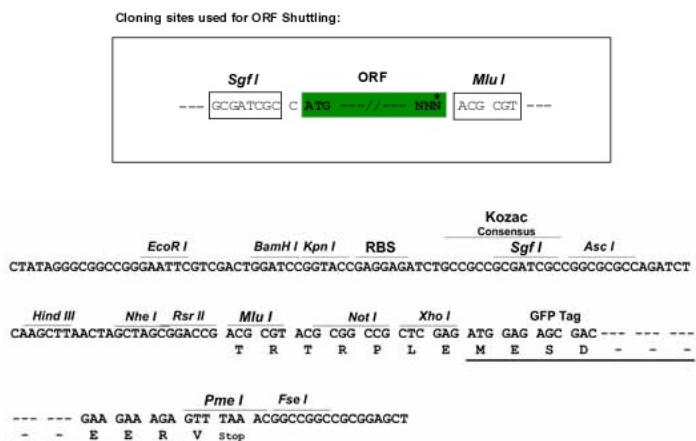
MAENNAQNKAKLISETRRRFEAEYVTEKSEKYDSRDVERLQDDNWNVESYLWYRHNVDDELKMLDESFO  
 WRKEFSVNDLSESSIPRWLLELGGIYLHGDKYKGNKLFWIRVKYHIKDKQTIMDKKKLIAFWLERYAKRE  
 NGKPITVMFDMSETGLNSIDMDFVRFIINCFKVYYPKYLKIVIFDMPWIMNAAFKIVKSWLGPEAVSLL  
 KFITSKNEIQEYVSVEYLPHPMGGTDPFKYSYPLVDDDFQTPLCENGPIASEDETSSKEDIKEDGKETLE  
 TISNEEPPALSEKSNPTESVSKKDENEKVDSTKTFKKPLSVFKGPLLHISPAEELYFGSIESGEKKTLLI  
 VLTNVTKNIVAFKVRRTAPEKYRVKPSNSSCDPGASIDIIVSPHGGLTVSAQDRFLIMAAEMEQSSGTGP  
 AELSQFWKEVPRNKVMEHRLRCHTVSSKPNMLKDSISTMSDKTSEDLYLQLNRLLESNRKLEDQLQR  
 SIWFQQLLLALTMVLLAFVVSFFYSLYN

**TRTRPLE** – GFP Tag – V

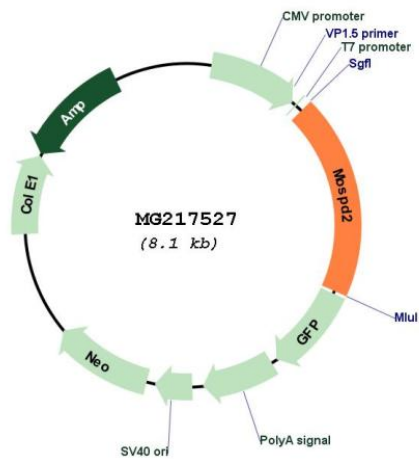
**Restriction Sites:**

Sgfl-MluI

## Cloning Scheme:



## Plasmid Map:



<b>ACCN:</b>	NM_029730
<b>ORF Size:</b>	1554 bp
<b>OTI Disclaimer:</b>	<p>Due to the inherent nature of this plasmid, standard methods to replicate additional amounts of DNA in E. coli are highly likely to result in mutations and/or rearrangements. Therefore, OriGene does not guarantee the capability to replicate this plasmid DNA. Additional amounts of DNA can be purchased from OriGene with batch-specific, full-sequence verification at a reduced cost. Please contact our customer care team at <a href="mailto:custsupport@origene.com">custsupport@origene.com</a> or by calling 301.340.3188 option 3 for pricing and delivery.</p> <p>The molecular sequence of this clone aligns with the gene accession number as a point of reference only. However, individual transcript sequences of the same gene can differ through naturally occurring variations (e.g. polymorphisms), each with its own valid existence. This clone is substantially in agreement with the reference, but a complete review of all prevailing variants is recommended prior to use. <a href="#">More info</a></p>
<b>OTI Annotation:</b>	This clone was engineered to express the complete ORF with an expression tag. Expression varies depending on the nature of the gene.
<b>Components:</b>	The ORF clone is ion-exchange column purified and shipped in a 2D barcoded Matrix tube containing 10ug of transfection-ready, dried plasmid DNA (reconstitute with 100 ul of water).
<b>Reconstitution Method:</b>	<ol style="list-style-type: none"> <li>1. Centrifuge at 5,000xg for 5min.</li> <li>2. Carefully open the tube and add 100ul of sterile water to dissolve the DNA.</li> <li>3. Close the tube and incubate for 10 minutes at room temperature.</li> <li>4. Briefly vortex the tube and then do a quick spin (less than 5000xg) to concentrate the liquid at the bottom.</li> <li>5. Store the suspended plasmid at -20°C. The DNA is stable for at least one year from date of shipping when stored at -20°C.</li> </ol>
<b>RefSeq:</b>	<a href="#">NM_029730.4</a> , <a href="#">NP_084006.2</a>
<b>RefSeq Size:</b>	2015 bp
<b>RefSeq ORF:</b>	1557 bp
<b>Locus ID:</b>	76763
<b>UniProt ID:</b>	<a href="#">Q9CWP6</a>
<b>Cytogenetics:</b>	X F5
<b>Gene Summary:</b>	Promotes migration of primary monocytes and neutrophils, in response to various chemokines.[UniProtKB/Swiss-Prot Function]