

## Product datasheet for **MG217504**

### Frmd3 (NM\_172869) Mouse Tagged ORF Clone

#### Product data:

Product Type:	Expression Plasmids
Product Name:	Frmd3 (NM_172869) Mouse Tagged ORF Clone
Tag:	TurboGFP
Symbol:	Frmd3
Synonyms:	4.1O; 9430066I12Rik; EPB41L4O; P410
Mammalian Cell Selection:	Neomycin
Vector:	pCMV6-AC-GFP (PS100010)
E. coli Selection:	Ampicillin (100 ug/mL)



[View online »](#)

**ORF Nucleotide Sequence:**

>MG217504 representing NM\_172869  
 Red=Cloning site Blue=ORF Green=Tags(s)

TTTTGTAATACGACTCACTATAGGGCGGCCGGAATTCGTCGACTGGATCCGGTACCGAGGAGATCTGCC  
 GCC**CGCATCGCC**

ATGTTTCGTTCTTGTCACTGTGCGCCGAGAGGCCAGAAAGACTATGAAGATGATTCACCTTTTCGGAGCTCCA  
 GTATCAAATCGCTCAACCAAGGAGATGAAATGCACCATTGACTGCTGGACGACTCGGAGGTCTCCTGCCA  
 TATCCAGAGGGAAACGAAAGGGCAGTTTCTCATTGAATACATCTGCAACTACTATAGCCTGCTGGAAAAG  
 GACTACTTTTGAATTTCGCTATGTGGACCCAGAGAAGCAAAGGCACTGGCTTGAGCCTAACAAGTCCATCT  
 TCAAGCAAATGAAATCTCATCCACCATACACCATGTGCTTTAGAGTGAAATTTACCCACATGAACCCTT  
 GAAGATTAAGAAGAGCTCACAAGGTACCTATTATATTTGCAAATTAAGAAGACATTTTTCATGGTCGA  
 CTGCTGTGTTCTTTTCTGATGTGCCTATCTGGGTGCTGTATCGTTCAAGCTGAGTTTGGTGATTACT  
 ATCCTGATGAGCATCCTGAGAATTATATCAGTGAGTTTGGAGTTTTCCCAAGCAGTCACAGAAATTGGA  
 AAGAAAAATCATGAAATTCATAACAACGAACTAAGAGGTGAGAGCCAGCAATTGCTGAATCACTTA  
 CTCTAAAAGCTCATACATTGAAAACCTTATGGAGTGGATCCTCACCCATGCAAGGATTCAAGAGGTGCTA  
 CAGCATTTTTAGGATTCAGTCTGCAGGTTTCGTCGATTTCCAGGGAAATAAAAGATCCATTTGAGAAA  
 ATGGTCAGATGTCTGCAAATGAAGTTTGAAGGGAAGACATTTTACGTGATTGGTTCCAGAAAAGAGAAA  
 AATGCTGTTTTGGCATTCCATACATCAACACCAGCTGCCTGCAAACATTTATGAAATGTGGGTAGAAA  
 ACCAAGCCTTTTATAAGTATGCAAAGTCCAGTCAGATCAAGACTGTGTCAAGCAGCAAGATTTTTTAA  
 AGGAAGTAGATTTGATACAGTGGTAAAGTTGCTAAAGAGGTGGTAGAGGCAAGCTCCAAAATCCAGAGG  
 GATCCTCCTGAAGTGCATAGAGTCAACATTACTCAGAGTCGACGCTTTCACTCCTTGAACAAACAGCTCA  
 TCATCAACATGGAACCTTTGCAGCCCCTGCTTCTTCCCCACTGAACAGGAAGAAGAAGTTCTCTGTGGG  
 TGAGGGTGTCCCCTGCCTAAAATGGATGTGCTGAGCCCTAATTGCCAGCTCACCAGTGAAGGGAGCA  
 CAGTGTGCAGATCCTCCAGATGAAGAGGAAGATAGAGTAAAAGAAGACCCCTTGACCATCTCTGAACTAG  
 CGTACAATCCCAGCGCCAGCCTGCTTCTACCCAGTGGATGATGATGAAATCAACATGCTCTTTGACTG  
 TCCATCCAGGCTTGAGTTAGAAAGAGAAGACACGGATTCAATTTGAGGAACTTGAAGCAGATGAAAATGCT  
 TTTTTGATTGCTGAAGAGGAGGAGCTGAAGGAAGCTCGCAAGCTTTGTCATGGAGCTATTCAATCTGA  
 CCGGCCATATCTGGGTCAACCCCTGGTCAAGAGTTTCTCCAGGCTCCTGTGGTGGGCCTGGGACTGCT  
 GCTGTTTGTATTTCCCTGCTCCTCCTCTTTGGAGTCAGTATTGATCTCCTTCTTATGCGAAATC  
 CGTCAGACACCAGAGTTTGAAGCAGTTTCACTATGAATACTATTGCTCCTCTGAAGGAGTGGGTGGCTGGGA  
 AGGTCAACATCGTCTCTACATGTGGTTGTTC

**ACGCGTACGCGGCCGCTCGAG** – GFP Tag – GTTTAA

**Protein Sequence:**

>MG217504 representing NM\_172869  
 Red=Cloning site Green=Tags(s)

MFASCHCAPRRRTMKMIHFRSSSIKSLNQEMKCTIRLLDDSEVSCHIQRKQFLIEYICNYSSLLEK  
 DYFGIRYVDPEKQRHWLEPNKSIKQKSHPPYTMCFRVKFPHEPLKIKEELTRYLLYLQIKRDIHFHGR  
 LLCSFSDAAYLGACIVQAEFGDYYPDEHPENYISEFEIFPKQSQKLERKIMEIHNNELRGQSPAIAEFNL  
 LLKAHTLETYGVDPHPCKDSRGATAFLGFTAAGFVVFQGNKRIHLRKWSDVCKLKFEGKTFYVIGSQKEK  
 NAVLAFHTSTPAACKHLWCKGVENQAFYKYAKSSQIKTVSSKIFFKGSFRFYSKVAKEVVEASSKIQR  
 DPPEVHRVNIQSRSFHSLNKQLIINMEPLQPLLPSPTEQEEVVPVGEVPLPKMDVSEPLIASSPVKGA  
 QCADPPDEEEDRVKEDPLTISELAYNPSASLLPTPVDDDEINMLFDCPSRLELEREDTDSFEELEADENA  
 FLIAEEEEELKEARQALSWSYSILTGHIWNPLVKFSRLLVVGGLLLLFVPLLLLLLLESIDLSFLCEI  
 RQTPEFEQFHYEYYCPLKEWVAGKVNIVLYMLGCS

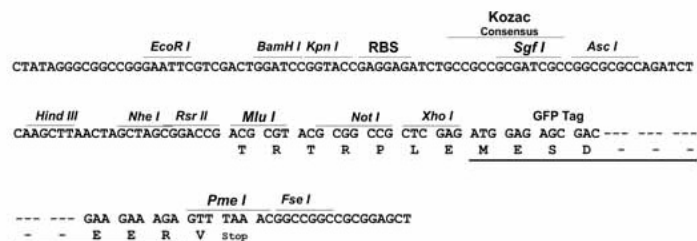
**TRTRPLE** – GFP Tag – V

**Restriction Sites:**

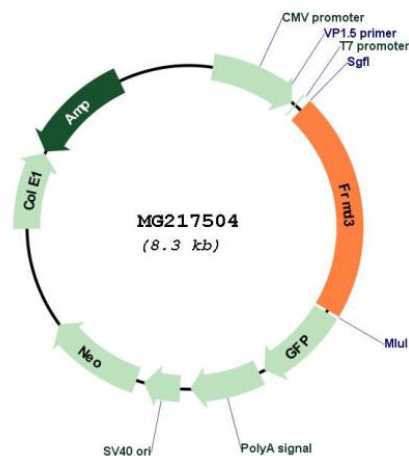
Sgfl-MluI

## Cloning Scheme:

Cloning sites used for ORF Shutting:



## Plasmid Map:



ACCN: NM\_172869

ORF Size: 1785 bp

<b>OTI Disclaimer:</b>	<p>Due to the inherent nature of this plasmid, standard methods to replicate additional amounts of DNA in E. coli are highly likely to result in mutations and/or rearrangements. Therefore, OriGene does not guarantee the capability to replicate this plasmid DNA. Additional amounts of DNA can be purchased from OriGene with batch-specific, full-sequence verification at a reduced cost. Please contact our customer care team at <a href="mailto:custsupport@origene.com">custsupport@origene.com</a> or by calling 301.340.3188 option 3 for pricing and delivery.</p> <p>The molecular sequence of this clone aligns with the gene accession number as a point of reference only. However, individual transcript sequences of the same gene can differ through naturally occurring variations (e.g. polymorphisms), each with its own valid existence. This clone is substantially in agreement with the reference, but a complete review of all prevailing variants is recommended prior to use. <a href="#">More info</a></p>
<b>OTI Annotation:</b>	This clone was engineered to express the complete ORF with an expression tag. Expression varies depending on the nature of the gene.
<b>Components:</b>	The ORF clone is ion-exchange column purified and shipped in a 2D barcoded Matrix tube containing 10ug of transfection-ready, dried plasmid DNA (reconstitute with 100 ul of water).
<b>Reconstitution Method:</b>	<ol style="list-style-type: none"> <li>1. Centrifuge at 5,000xg for 5min.</li> <li>2. Carefully open the tube and add 100ul of sterile water to dissolve the DNA.</li> <li>3. Close the tube and incubate for 10 minutes at room temperature.</li> <li>4. Briefly vortex the tube and then do a quick spin (less than 5000xg) to concentrate the liquid at the bottom.</li> <li>5. Store the suspended plasmid at -20°C. The DNA is stable for at least one year from date of shipping when stored at -20°C.</li> </ol>
<b>RefSeq:</b>	<a href="#">NM_172869.4</a> , <a href="#">NP_766457.1</a>
<b>RefSeq Size:</b>	3977 bp
<b>RefSeq ORF:</b>	1788 bp
<b>Locus ID:</b>	242506
<b>UniProt ID:</b>	<a href="#">Q8BHD4</a>
<b>Cytogenetics:</b>	4 C3
<b>Gene Summary:</b>	Putative tumor suppressor gene that may be implicated in the origin and progression of lung cancer.[UniProtKB/Swiss-Prot Function]