

Product datasheet for **MG217503**

Tars2 (NM_001163618) Mouse Tagged ORF Clone

Product data:

Product Type:	Expression Plasmids
Product Name:	Tars2 (NM_001163618) Mouse Tagged ORF Clone
Tag:	TurboGFP
Symbol:	Tars2
Synonyms:	2610024N01Rik; AI429208; Tarsl1; thrRS
Mammalian Cell Selection:	Neomycin
Vector:	pCMV6-AC-GFP (PS100010)
E. coli Selection:	Ampicillin (100 ug/mL)



[View online »](#)

ORF Nucleotide Sequence:

>MG217503 representing NM_001163618
 Red=Cloning site Blue=ORF Green=Tags(s)

TTTTGTAATACGACTCACTATAGGGCGGCCGGGAATTCGTCGACTGGATCCGGTACCGAGGAGATCTGCC
 GCC**CGGATCGCC**

ATGGGTCTCTGTCTGAGGTGGCGCCGGCTTGGGTTCCCACTCCCAGAGTTCGCCCGCTGCGAGCTCCACA
 CCGTGCGTGAGGCCTCTGCACCAACTCCTCCACATTGGTTGGCAGAACGATTTGGCCTTTTTGAGGAGCT
 ATGGACCCTCACGTGAAAAAGTTAGCAAGTATGACACAGAAGAAAGCCCGGGCTATTAAGATATCACTT
 CCTGAAGGCCAGAAGGTAGATGCTGTTGCATGGAACACAACCCCTTACCAACTGGCCATCAGATCAGTG
 TAACACTGGCTGATACTGCAGTGGCTGCTGAAGTAAATGGAGAAGTTTACGATCTGGACCACCCTTGA
 GACAGATTGTACCTCAGATTTCTGACATTTGATCCCCAGAGGGCAAAGCGGACAACCACTTTAAGCTT
 CATCTGATCGAGGAGAAAGTGACAGGCCAACGGCAACAGTGTATGGGTGTGGCATGTCAAGTACCTGT
 GCCGAGGCCCCCATCTTCGGCACACTGGACAGATTGGAGCACTGAAGCTGCTCACGAACCTCTCAGCCTT
 GTGGAGTCTTGGGAGCACCTGAGACACTGCAGAGGGTATCAGGAATTTCTTTCCCAAAGTAGAGTTA
 CTGAGGAACTGGGAAGCTCGAAGAGAAGCAGCAGAGTTAAGAGACCACAGACGCATTGGGAAGGAACAGG
 AGCTCTTCTTCTCCATGAACTGAGCCCTGGGAGCTGTTTTTCTTGCCACGAGGGACAAGAGTCTATAA
 TGCCCTGGTGGCTTTCATCAGGGCTGAGTATGCCCGCCGTGGTTTCTCAGAGGTGAAAACCTCCACGCTG
 TTTTCTACAAAACCTGGGAACAGTCAAGGCACTGGGAACACTATAGGGCAGACATGTTTTCCCTGAAGC
 CCCCTGGCACTGATGGTGTGACAACCTCCAGAGTGGCCATCCTGCCAGGTGTCCCAAAGACACACTTGC
 TCTAAAGCCATGAACTGCCCTGCACACTGCCTGATGTTGCCACCGGCCAGATCCTGGAGGAACTG
 CCTGTGCGACTGGCTGATTTCCGAGCCCTGCATCGGGCTGAGGCCCTGCGCAGTCTGGGAGGATTAACGC
 GGCTGTGGCGCTTCCAGCAGGATGATGCGCACATCTTTTGTGCACCCCATCAGCTGGAAGCAGAGATCCA
 GGGCTGCCTTGATTTTCTCCGGTGTGTTACTCGGTTCTTGGTTTTTCTTCCACCTGGCTTTATCTACC
 CGGCCACCTGGTTTCTAGGGGAGCTCGCCTATGGGACCAGGCTGAGCAGGTTCTACAGCAAGCCTTGG
 AGAAGTTTGGAGAACCTGGGACCTCAACCCTGGAGATGGGGCTTCTATGGGCCTAAGATTGATGTGCA
 CCTCCACGACGCCCTTGGTCGGCCCATCAGTGTGGAACAATCCAGCTTGACTTCCAGCTGCCACTGAGA
 TTTGACCTACAATAACAAGGGCCCGCAGGTACCCAGAGTGTCCAGTCTTATTCATCGAGCAGTGTCTG
 GTTCTGTGAAAGGCTGTTGGGAGTGTGGCAGAAAGCTGTGGGGGAAATGGCCCTGTGGCTGTCCCC
 GCTCCAGTGGTGGTATCCCTGTGAGGACAGAGCAAGAGGAATATGCCAGGCAGGTGCAACAGTGCCTG
 CAGGCTGCAGGACTTGTGAGTATCTCGATGCAGACTCTGGACTGACCCTCAGCCGAGAGTCCGCCGGG
 CCCAGCTTGCCCACTACAACCTTTCAGTTTGTGGTTGGCCAGAGAGCAGAGTCAAAGGACAGTGAACGT
 ACGCACGCGAGATAACCGGCAGCTCGGGGAGCGAGACCTGGCCGAGTCCGTGCAGAGACTGCTGGAGTTA
 CAGAACGCCAGGGTCCCAATGCAGAAGAAGTGTTCT

ACGCGTACGCGGCCGCTCGAG – GFP Tag – GTTTAA

Protein Sequence:

>MG217503 representing NM_001163618
 Red=Cloning site Green=Tags(s)

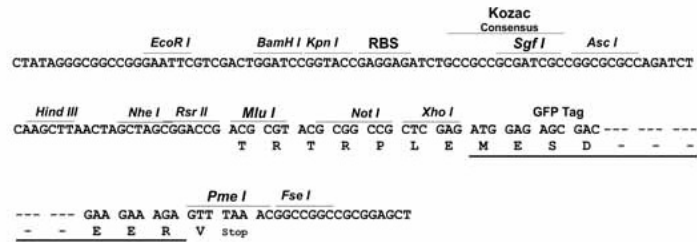
MGLCLRWRRLGFPLPEFRRCLEHTVREASAPTPPHWLAERFGLFEELWTAHVKKLASMTQKKARAIKISL
 PEGQKVDAAVWNTTPYQLAHQISVTLADTAVAAEVNDEL YDLDRPLETDCHLRFLTFDSPEGKADNHFKL
 HLIIEEKVTGPTATVYCGMSVDLCRPHLRHTGQIGALKLLTNSSALWRS LGAPETLQRVSGISFPKVEL
 LRNWEARREAELRDHRRIGKEQELFFHELSPGSCFFLPRGTRVYNAL VAFIRAEYARRGFSEVKPTL
 FSTKLWEQSGHWEHYRADMFSLKPPGTDGVDNSQSGHPARCPKDTLALKPMNCPAHCLMF AHRPRSWREL
 PVRLADFGALHRAEASGSLGGLTRLWRFQDDAHIFCAPHQLEAEIQGCLDFLRVYVSVLGF SFHLALST
 RPPGFLGEPRLWDQAEQVLQQALEKFGPEWDLNPGDGAFFYGPKIDVHLHDALGRPHQCGTIQLDFQLPLR
 FDLQYKGPAGTPECPVLIHRAVLGSVERLLGVLAESC GGKWLWLSPLQVVVIVPRTEQEEYARVQVQCL
 QAAGLVSDL DADSGLTL SRRVRRQA LAHYNFQFVVGQREQSQRTVNVVTRDNRQLGERDLAESVQRLEEL
 QNARVPNAEEVF

TRTRPLE – GFP Tag – V

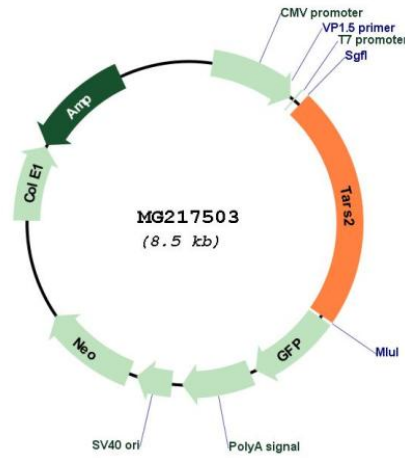
Restriction Sites: Sgfl-MluI

Cloning Scheme:

Cloning sites used for ORF Shutting:



Plasmid Map:



ACCN: NM_001163618

ORF Size: 1926 bp

OTI Disclaimer:	The molecular sequence of this clone aligns with the gene accession number as a point of reference only. However, individual transcript sequences of the same gene can differ through naturally occurring variations (e.g. polymorphisms), each with its own valid existence. This clone is substantially in agreement with the reference, but a complete review of all prevailing variants is recommended prior to use. More info
OTI Annotation:	This clone was engineered to express the complete ORF with an expression tag. Expression varies depending on the nature of the gene.
Components:	The ORF clone is ion-exchange column purified and shipped in a 2D barcoded Matrix tube containing 10ug of transfection-ready, dried plasmid DNA (reconstitute with 100 ul of water).
Reconstitution Method:	<ol style="list-style-type: none">1. Centrifuge at 5,000xg for 5min.2. Carefully open the tube and add 100ul of sterile water to dissolve the DNA.3. Close the tube and incubate for 10 minutes at room temperature.4. Briefly vortex the tube and then do a quick spin (less than 5000xg) to concentrate the liquid at the bottom.5. Store the suspended plasmid at -20°C. The DNA is stable for at least one year from date of shipping when stored at -20°C.
RefSeq:	NM_001163618.1 , NP_001157090.1
RefSeq Size:	2281 bp
RefSeq ORF:	1929 bp
Locus ID:	71807
UniProt ID:	Q3UQ84
Cytogenetics:	3 F2.1
Gene Summary:	Catalyzes the attachment of threonine to tRNA(Thr) in a two-step reaction: threonine is first activated by ATP to form Thr-AMP and then transferred to the acceptor end of tRNA(Thr). Also edits incorrectly charged tRNA(Thr) via its editing domain.[UniProtKB/Swiss-Prot Function]