

Product datasheet for **MG217457**

Cep95 (NM_001166685) Mouse Tagged ORF Clone

Product data:

Product Type:	Expression Plasmids
Product Name:	Cep95 (NM_001166685) Mouse Tagged ORF Clone
Tag:	TurboGFP
Symbol:	Cep95
Synonyms:	4732496G21Rik; AI118346; AI448335; Ccdc45; D330027A14Rik; F630025I20Rik
Mammalian Cell Selection:	Neomycin
Vector:	pCMV6-AC-GFP (PS100010)
E. coli Selection:	Ampicillin (100 ug/mL)



[View online »](#)

ORF Nucleotide Sequence:

>MG217457 representing NM_001166685
 Red=Cloning site Blue=ORF Green=Tags(s)

TTTTGTAATACGACTCACTATAGGGCGGCCGGGAATTCGTCGACTGGATCCGGTACCGAGGAGATCTGCC
 GCC**CGCATCGCC**

ATGGCCAGCTCAGAGGCTGAATGGGTAACAATTGCCAATAACCTCCTTTTTAAATGTCACATACACCTGA
 GGATACACGAACCTCAAGACTGTGATGCTAATGTTTTATTGCCCTTTATCAATCCATTTGGGAGAAAA
 GGTACCAGACCTCATAGTTCTTCCAGGAATCAAGAAGACGAGGCCACAAATGTCCAAGCGGTAATTGAT
 TCACTCGCTTTGGATTACCTTCAGGTGAGCCTGTCTCACATAACAGGAGAAAAACATAGTAAAGGGGATA
 ATGAATCTATCAGGAATCTCCTAGAAAATTTTGTGGATTGCTGGATTATCTGACAGAACACATCAGTGA
 ATCGTCTCCCAACAAAAGTGAAGTGAAGTGAAGTGAAGTGAAGTGAAGTGAAGTGAAGTGAAGTGAAGT
 CTAGAAGTACCGAGGAGCGAAGTGGAGAAACGCTTCTTTATGAGGTGTTCTTCTCATCGGACACTT
 TGGGCCCCACCTGGGATGAAGACGAAGCTGAGTCCACAGGTGAAATAATTAGGCTGGGAGACACTGCACA
 TACCTTTTCCAAAGAAGTAATGCATCAGAACTCCTCCTATGAGCATGGTTCCAAGTGCCAGGAAGCTA
 GCGGAGCCGATCCGAGCTGCCATTCTTTACATCCTCCCTACCATCCTTCTGAGCCTAGAGCACCATGTC
 CCATAGGCAAAGAATACCTCTGGTCAAGTCGCTACTTGTCTACGCCGACTTCTGGAGAGCACATGGCACC
 TTCTGTGGAACAGATGATGCTTTCTAACTTCTACCTATTTAAAGATGATGATCAGGAAACATATCTA
 CCTAAACCTGAAGCCACCAGGACAAGGAAGCCTTCTAAAGGAGAAAGAGATGAAAACAGAGCTGCGATCC
 CCTCAGAGCATCTGCCTTTCTCTCAGAAGGCCAGGAAGCCGTTAACAGAACAAAGAACTGCACGCCATGTC
 AGAGAACTCTCTCAGCGGCTCTCTGAAGTACTGGATGTTAAAACTGCCCTGGGTGATCGAGGAACG
 GGCGAAACTGATGGTAAATGATGGTGGTGGTGGTGGTGGTGGTGGTGGTGGTGGTGGTGGTGGTGGTGGT
 CGCAGCACAGTGACAGCGTCTGAGTACGGACCAAAGAAGCCGAGGCCAGGATTTTCTACGTGCAGAAA
 GGCACCTTACAGTCCCATTCACTGTCCGATCTTCAGTGAACAAACACAGACAATTAGAGAAAGAGAAA
 AAAAGGCAGCACAACTCTAAAGGACAGACTCATGCCATTTCAAAGCAAAGGCACTGACTGAAGCATTTG
 AACGGAACTAAGAAAACATAAAGTTCAAGAGAACGTTGGACTTCGAGGGATAAGGGAGGAGGAGGAAGA
 GGAAGAGGAAACAGGGAAGTCATACAGAGAAGTCGTTCTTAAAGGAACTTCCAAACGGAGTCAGTCCAG
 AAGACTTACTCCAGAAAACTGCAGTCCAAGTCCAAAGGAGATGGTCGCCTGAAGTCAAGCAAGGCGT
 CTCCGATGAAAGTAAAGTGAACACAGTCTGCTATCCCTGATGCTGGAACAGTTTCCATTTCTATGTTTC
 TGACCCAACTGACCAAAATGTGGAAGCAGCAGATGGCCAGGTTGAACAACCTCAAAGGGAAGCGCAG
 AGAGAGAACCGATCCAAGAAGAACTCCAGGATGAAATAGAAGAAGCCCTGAGAAGGCATGACCTCCTCA
 CTGCTCTTGTCAAGAAAGATATGACCATAACAAGAGGCTGCAAGACTTCAGGGACCGAATTCAGAGACA
 AAGGTTGACCAATCAAAGATAAAAAGAAAATCGTCATCAAAGTGTTCGTGCCCGGAAATATTATGATGAT
 TACAGAGTTTACGTTACGTGCAAAAATGATGAAGATGAGAACCAGGGAAGAAATGATCTTTAAGAACTGT
 TTGAAGAAGGTTTACAAATTCAGAAACAAAGACTACGAGACCTAAGAACTACGCCAAAGAGAAACGCAA
 CGAAGAAAAGAGACAGCACCAGAATGAGCTGGACTCGATGGAGAACCCTATAAGGACCAGTTTTTATTG
 CTAGCAGAAGCCATCTCACAGGAACGTCAAGAACTCAAAGTGAAGCAGAAATCCAGGCTCAGACATTAC
 ATAAGGTGAAGAGGGAGCTGAGAGCTAAAATGGAGAAGGAGATTCAGCAACTGCAGCACATGATAACGCA
 GAACGACGATGATGCTTTCTTCCGGAGCTAGAAGCTGAGCGCTTCAAAGCTCGGCTGCAGTTGGCTTCC
 TTCCAGTACAGTAAAAATCCTTTCCCAAGAGGCCAACTTCA

ACGCGTACGCGGCCGCTCGAG - GFP Tag - GTTTAA

Protein Sequence: >MG217457 representing NM_001166685
 Red=Cloning site Green=Tags(s)

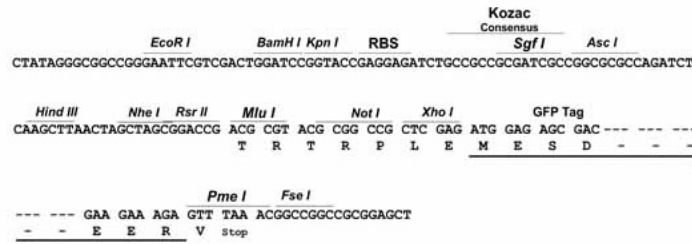
MASSEAEWVTIANLLFKCHIHLRIHELQDCDANVFIALYQSILGEKVPDLIVLPRNQEDEAHNVQAVID
 SLALDYLQVLSHITGENIVKGDNESIRNLEIFDGLLDYLTEHISESSPNKSETEQYSKDSHGEEAGED
 LERTEEAKWRNASFMRCFSDDLPTWDEDEAESTGEIIRLGDTAHTFSQRSNASETPPMSMVP SARKL
 GEPIRAAIPLHPPYHPSEPRAPCPIGKEYLWSSRYLSTPTSGEHMAPSVEPDDAFLTSTLFKDDQETYL
 PKPEATRTRKPSKGERDENRAAIPSEHLFSSQKARKPLTEQELHAMSEKLSQRLSELDWMLKTALGDRGT
 GETDGDNDGGGGEEVRSNGNEEMLSQHSDSVMYGPKKPRPGFSTCRKAPYRSHSLSPSSVKNHRQLEKEK
 KRQHKSKGTDSCHFQAKALTEAFERELRKHVQENVGLRGIREEEEEEEETGKSYREVVPKGTSKRSQVQ
 KTYSRKTAAPSPKGDGRLKSSKASPMKVSEHLLSLMLEQFPFLYVSDPTLTKMWKQMQAVEQLKREAQ
 RENRSKKKLQDEIEEALRRHDLTALVKKEYDHNKRLQDFRDRIQRQLTQSKIENRHQSVRARKYDD
 YRVQLRAKMMKMR TREEMIFKKLFEGLQIQKQLRDLRNYAKEKRNEEKROHQNELDSMENHYKDQFSL
 LAE AISQERQELKVRQKFAQTLHKVKRELRAKMEKEIQQLQHMITQNDDDAFFRELEAERFKARLQLAS
 FQYSKNPFPRGQTS

TRTRPLE - GFP Tag - V

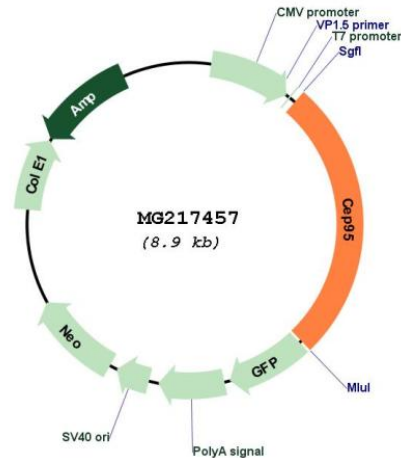
Restriction Sites: SgfI-MluI

Cloning Scheme:

Cloning sites used for ORF Shuttling:



Plasmid Map:



ACCN: NM_001166685

ORF Size: 2352 bp

OTI Disclaimer: The molecular sequence of this clone aligns with the gene accession number as a point of reference only. However, individual transcript sequences of the same gene can differ through naturally occurring variations (e.g. polymorphisms), each with its own valid existence. This clone is substantially in agreement with the reference, but a complete review of all prevailing variants is recommended prior to use. [More info](#)

OTI Annotation: This clone was engineered to express the complete ORF with an expression tag. Expression varies depending on the nature of the gene.

Components: The ORF clone is ion-exchange column purified and shipped in a 2D barcoded Matrix tube containing 10ug of transfection-ready, dried plasmid DNA (reconstitute with 100 ul of water).

Reconstitution Method:

1. Centrifuge at 5,000xg for 5min.
2. Carefully open the tube and add 100ul of sterile water to dissolve the DNA.
3. Close the tube and incubate for 10 minutes at room temperature.
4. Briefly vortex the tube and then do a quick spin (less than 5000xg) to concentrate the liquid at the bottom.
5. Store the suspended plasmid at -20°C. The DNA is stable for at least one year from date of shipping when stored at -20°C.

RefSeq: [NM_001166685.1](#), [NP_001160157.1](#)

RefSeq Size: 2608 bp

RefSeq ORF: 2355 bp

Locus ID: 320162

Cytogenetics: 11 E1