

## Product datasheet for **MG217415**

### **Bcas1 (NM\_001164369) Mouse Tagged ORF Clone**

#### **Product data:**

Product Type:	Expression Plasmids
Product Name:	Bcas1 (NM_001164369) Mouse Tagged ORF Clone
Tag:	TurboGFP
Symbol:	Bcas1
Synonyms:	2210416M21Rik; 9030223A09Rik; AI841227; NABC1
Mammalian Cell Selection:	Neomycin
Vector:	pCMV6-AC-GFP (PS100010)
E. coli Selection:	Ampicillin (100 ug/mL)



[View online »](#)

**ORF Nucleotide Sequence:**

>MG217415 representing NM\_001164369  
 Red=Cloning site Blue=ORF Green=Tags(s)

TTTTGTAATACGACTCACTATAGGGCGGCCGGGAATTCGTCGACTGGATCCGGTACCGAGGAGATCTGCC  
 GCC**CGCATCGCC**

ATGGAGGCCAGGCTGTGGCGATGCCAGCGAAAGAATCTTGGAAAGAAGCCAAGACCAAGGCCACCAG  
 CTGCTAGATCCCATTTTTCTTGACACTCTCTCGCCTGTACCAGGACGTCCCGGGACCAAGGCACGGA  
 TTCATCGGCTGCATCGGGAGGTTTGTGTGTCAGCCCAAGCGCAGTGCCTGAGAACAAGACCCAAGTGAG  
 CACGGGGCACTTCCGGTGGCAGCTGCACCAGGGCAGGCTCCAGATAAAACCCAGGGTGCCTCCGAGGCCA  
 AGCAGCAGACCCTCCCTGCCACCGGCCATTGGCACCTCACCACCTGAGTCCCAGGCAGAAGCCCCGGC  
 CCAGGACAAGGATTTCCGGCTTTTGAACAGATTCTTAAACTGGACAAAGGAAGAAAGCGCGCCGGT  
 AACAGCCAGCCAAAGAAGCGAAAGGCTCGGAAGACCCAGAACAGGCCACAGAGGCTCCTGCCGTGCCAG  
 GGAATCCCATGGTGTCTCTGCAGGGGAGGACATAGTCGACAGCGAGCAGAGAGGACAAGACGTTGACAC  
 TCTGAGTTATTCTGTCCCTGGGGATCCAGAGGTGCCGGGACCACGAAGGAGACCCGCAGGTGGTTCGAT  
 ACCACAGAGAACAGCAGCTCCATCATGAGCTTCTCAAGACACTGGTTTACCTAACAAGACTGAAACAA  
 AGAAGGACCCAGAAGACACGGATACTGAGAACTCACCCACGACTTCAGCCAATCTCAAGTCGGACAAAGC  
 CAACTTACACCCAGGAGACCCGAGGGAAGACAAAGGCTACAAAAGCTGCAGCCCCCACCGCCACCT  
 CCTGAACCCAGCAGGAAGGAGAGACAGCGGCAAGGAGAAGGCAGGGCCACCTCACTACCGCTGGGAA  
 AGTTGTTTTGGAAGAAGTCAGTTAAGGAGGATACACTTCCACAGGTGCAGAGGAGAACCGGGTGTGTGA  
 GTCACCACTAGAGACCGTAAGGCTTGAGGAAGTAGAATCCAGCTTACAACTGTGGATCTCAGTGAAGAG  
 ACCCAGCCTGAACCCACAGACGTAAGTCAAAGAAGAAAGCAACCCCGGAAGACCCCTCTGATGGCGT  
 TTCTCAGACAAATGTCAGTGAATCGAGCGAAGGGATCCCGGCTCGGAAGAAAGTAACTGAAAGACTC  
 CAGCTGCCAAACGTCAAACCTCCGTGAAAAGACGCCCTCACCCCCAGAGCCAGAGCCCGGGAAACAGCT  
 CAGAAAAACAAGGAGACCTCCTCCTCGAAGGACAAGAAATCAGTGGACAAGAAAGTCAGCGACTGAGAACA  
 GCAAGCAGAAGAAGCGCAAAACAGGAAGTCAGAGAGCCGCGCCGTGTGTGCAGCCGCCACAGTGGAGGC  
 AAACGCAATGCAGACTGGGGACAAGACCCCAAAGAAGTCTGAGAAGCGGCGACAGTCCCTCGGGGCTTC  
 CTGAAGGGCTGGGACCAAAGCGGATGTCGGATGCTCAGGTGCAAACGGACCCGGTCTCCATCGGACCAG  
 TTGGAAAATCCAAG

**ACGCGTACGCGGCCGCTCGAG** - GFP Tag - GTTTAA

**Protein Sequence:**

>MG217415 representing NM\_001164369  
 Red=Cloning site Green=Tags(s)

MEAQAVGDASGKNLGKEAKTKAPAARSHFFLTLSRVPGRPGDQGTDSSAASGRFDVSPSAVPENKDPSE  
 HGALPVAAAPGQAPDKTPGCPEAKQQLPATGPLAPSPPEAQAEAPAQDKDFGLNRFKLDKGRESAPV  
 NSQPKEAKGSEDPEQATEAPAVPGNPHGVSAGEDIVDSEQRGQDVDTLSYSVPGDPEVPGTTKEDPQVVD  
 TTENSSSISFFKTLVSPNKTETKKDPEDDTENSPTTSANLKSDKANFTPQETRGTATKSCSPPPP  
 PEPTSEGRDSGKEKAGPTSLPLGKLFWKSVKEDTLSTGAEENAVCESPVETVRLEEVESSLQTVDLSEE  
 TQPEPTDVKVKEESKPRKTPLMAFLRQMSVRSSEGIPTSEESNVKDSSCQTSNSVEKTPSPPEPEPAGTA  
 QKNKETSSSKDKKSVDKKATENSKQKNGKQEVREPAFCVQPTVEANAMQTDGKTPKKSEKRRQSLGGF  
 LKGLGPKRMSDAQVQTDVPSIGVPGSK

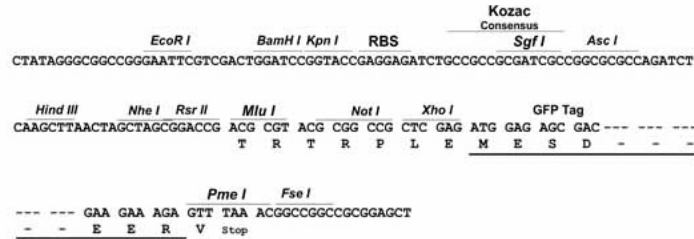
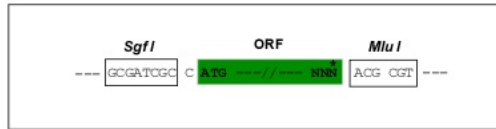
**TRTRPLE** - GFP Tag - V

**Restriction Sites:**

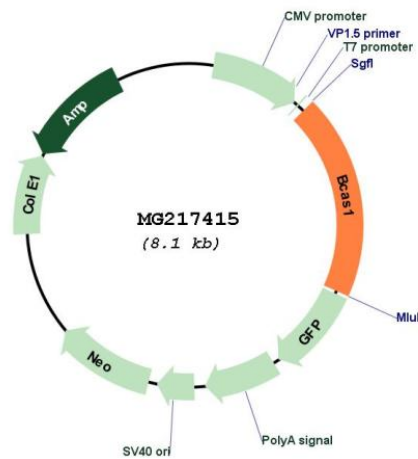
Sgfl-MluI

## Cloning Scheme:

Cloning sites used for ORF Shutting:



## Plasmid Map:



<b>ACCN:</b>	NM_001164369
<b>ORF Size:</b>	1761 bp
<b>OTI Disclaimer:</b>	The molecular sequence of this clone aligns with the gene accession number as a point of reference only. However, individual transcript sequences of the same gene can differ through naturally occurring variations (e.g. polymorphisms), each with its own valid existence. This clone is substantially in agreement with the reference, but a complete review of all prevailing variants is recommended prior to use. <a href="#">More info</a>
<b>OTI Annotation:</b>	This clone was engineered to express the complete ORF with an expression tag. Expression varies depending on the nature of the gene.
<b>Components:</b>	The ORF clone is ion-exchange column purified and shipped in a 2D barcoded Matrix tube containing 10ug of transfection-ready, dried plasmid DNA (reconstitute with 100 ul of water).
<b>Reconstitution Method:</b>	<ol style="list-style-type: none"><li>1. Centrifuge at 5,000xg for 5min.</li><li>2. Carefully open the tube and add 100ul of sterile water to dissolve the DNA.</li><li>3. Close the tube and incubate for 10 minutes at room temperature.</li><li>4. Briefly vortex the tube and then do a quick spin (less than 5000xg) to concentrate the liquid at the bottom.</li><li>5. Store the suspended plasmid at -20°C. The DNA is stable for at least one year from date of shipping when stored at -20°C.</li></ol>
<b>RefSeq:</b>	<a href="#">NM_001164369.1</a> , <a href="#">NP_001157841.1</a>
<b>RefSeq Size:</b>	2952 bp
<b>RefSeq ORF:</b>	1764 bp
<b>Locus ID:</b>	76960
<b>Cytogenetics:</b>	2 H3
<b>Gene Summary:</b>	Required for myelination.[UniProtKB/Swiss-Prot Function]