

Product datasheet for **MG217406**

Bcas2 (NM_026602) Mouse Tagged ORF Clone

Product data:

Product Type: Expression Plasmids
Product Name: Bcas2 (NM_026602) Mouse Tagged ORF Clone
Tag: TurboGFP
Symbol: Bcas2
Synonyms: 6430539P16Rik; A1132645; C76366; C80030
Mammalian Cell Selection: Neomycin
Vector: pCMV6-AC-GFP (PS100010)
E. coli Selection: Ampicillin (100 ug/mL)
ORF Nucleotide Sequence: >MG217406 representing NM_026602
 Red=Cloning site Blue=ORF Green=Tags(s)

TTTTGTAATACGACTCACTATAGGGCGGCCGGAATTCGTCGACTGGATCCGGTACCGAGGAGATCTGCC
 GCC**CGATCGCC**

ATGGCGGGCACGGGCTTGGTAGCCGGAGAGGTGGTGGTAGATGCGCTACCATATTTTGACCAAGGCTATG
 AGGCACCCGGCGTGCGGGAAGCGCGGCCCTGGTGGAGGAGGAGACGCGCAGATACCGACCTACCAA
 GAACTACCTGAGCTACCTGACGGCCCCGATTATTCTGCCTTTGAAACAGACATAATGAGAAATGAATTT
 GAAAGACTCGCTGCTCGACAACCGATTGAATTACTCAGCATGAAACGATATGAACTCCAGCCCCCTCT
 CAGGTCAAAAAATGACATTACTGCATGGCAAGAATGTGTAACAATTCTATGGCTCAGTTGGAGCACCA
 GCGGTCGGGATCGAATCTGGAGCTGATGTCACAGCATGGATGCAATGCCTGGAAGGTGACAATGAA
 AATCTTGTTCATATGATTGAACATGCACAGAAAGAGCTTCAGAAGTTAAGGAAACATATTCAAGATTTGA
 ACTGGCAGCGAAAGAACATGCAGCTTACAGCTGGATCTAAGCTGAGAGAAATGGAGTCAAACCTGGGTGTC
 GCTGGTGAGTAAGAACTATGAGATTGAGCGGACGATTGTCCAGCTGGAGAACGAGATCTATCAGATCAAG
 CAGCAGCACGGGGAGGCCAACAAGGAAAACATCCGCCAAGACTTC

ACGCGTACGCGGCCGCTCGAG - GFP Tag - GTTTAA



[View online »](#)

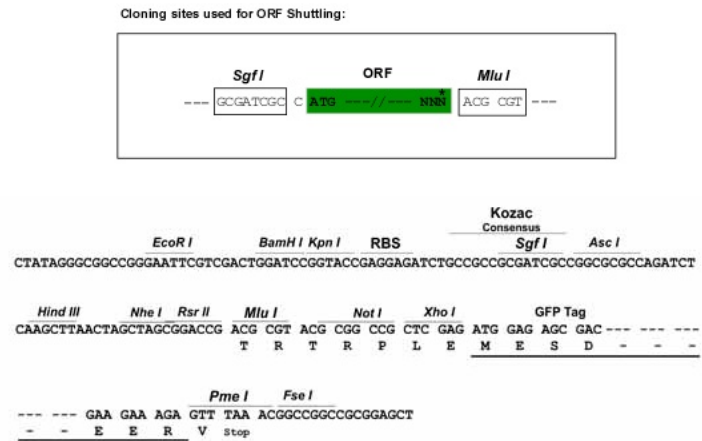
Protein Sequence: >MG217406 representing NM_026602
 Red=Cloning site Green=Tags(s)

MAGTGLVAGEVVVDALPYFDQGYEAPGVREAAAALVEEETRRYRPTKNYLSYLTAPDYSAFETDIMRNEF
 ERLAARQPIELLSMKRYELPAPSSGQKNDITAWQECVNNNSMAQLEHQAVRIENLELMSQHGCAWVYNE
 NLVHMIEHAQKELQKLRKHIQDLNWQRKNMQLTAGSKLREMESNWVSLVSKNYEIERITIVQLENIYQIK
 QQHGEANKENIRQDF

TRTRPLE - GFP Tag - V

Restriction Sites: SgfI-MluI

Cloning Scheme:



ACCN: NM_026602

ORF Size: 675 bp

OTI Disclaimer: The molecular sequence of this clone aligns with the gene accession number as a point of reference only. However, individual transcript sequences of the same gene can differ through naturally occurring variations (e.g. polymorphisms), each with its own valid existence. This clone is substantially in agreement with the reference, but a complete review of all prevailing variants is recommended prior to use. [More info](#)

OTI Annotation: This clone was engineered to express the complete ORF with an expression tag. Expression varies depending on the nature of the gene.

Components: The ORF clone is ion-exchange column purified and shipped in a 2D barcoded Matrix tube containing 10ug of transfection-ready, dried plasmid DNA (reconstitute with 100 ul of water).

Reconstitution Method:

1. Centrifuge at 5,000xg for 5min.
2. Carefully open the tube and add 100ul of sterile water to dissolve the DNA.
3. Close the tube and incubate for 10 minutes at room temperature.
4. Briefly vortex the tube and then do a quick spin (less than 5000xg) to concentrate the liquid at the bottom.
5. Store the suspended plasmid at -20°C. The DNA is stable for at least one year from date of shipping when stored at -20°C.

RefSeq: [NM_026602.4](#)

RefSeq Size: 1422 bp

RefSeq ORF: 678 bp

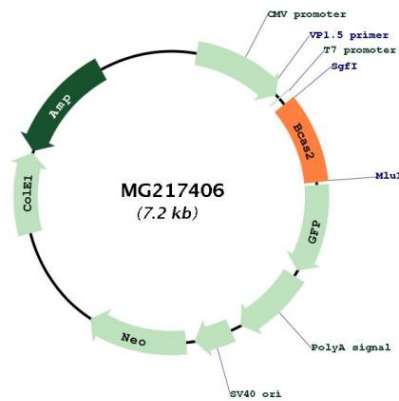
Locus ID: 68183

UniProt ID: [Q9D287](#)

Cytogenetics: 3 F2.2

Gene Summary: Required for pre-mRNA splicing as component of the activated spliceosome. Component of the PRP19-CDC5L complex that forms an integral part of the spliceosome and is required for activating pre-mRNA splicing. May have a scaffolding role in the spliceosome assembly as it contacts all other components of the core complex. The PRP19-CDC5L complex may also play a role in the response to DNA damage (DDR).[UniProtKB/Swiss-Prot Function]

Product images:



Circular map for MG217406