

Product datasheet for **MG217391**

Abcc10 (NM_170680) Mouse Tagged ORF Clone

Product data:

Product Type:	Expression Plasmids
Product Name:	Abcc10 (NM_170680) Mouse Tagged ORF Clone
Tag:	TurboGFP
Symbol:	Abcc10
Synonyms:	mFLJ00002; Mr; Mrp7
Mammalian Cell Selection:	Neomycin
Vector:	pCMV6-AC-GFP (PS100010)
E. coli Selection:	Ampicillin (100 ug/mL)
ORF Nucleotide Sequence:	>MG217391 representing NM_170680 Red=Cloning site Blue=ORF Green=Tags(s)

TTTTGTAATACGACTCACTATAGGGCGGCCGGAATTCGTCGACTGGATCCGGTACCGAGGAGATCTGCC
GCC**CGATCGCC**

ATGGAGGGGCTCCTGGCCAGCTGTGTGGCACGGACGCGGCGGGCCGCTCCCGCTGTGGGAAGGGGACA
CGACGGGCCACTGCTTACCCAGCTGGTGTCTCAGCGCCCTCCCCACGCGCTCCTCGCCGCTCCTCAGTGC
CTGCCACTTGGGCACCCCAAGGACTACCAATCACTCCCCAGCTCTCAATCCTGGCTGGCGCTCCGACTC
GCAGCATCTTCTCCTTTCCATCTTCCACTGCTAGACCTCCTTCCAGTTGTTTTGCCTCAGGGTAC
GCCAGGGCCCTTATGGCTAGAGGTGCTGGCAGGGTGTGTGACAGCTGTGGCCTGGTTCACCCACAGCCT
GGCCTGTGGGCACTGGTTCATTCCTCGTGGCCGTTCCCGTGGACCCTTGGCCTTGGCTGTGGCAGCC
TTTCTACCAACCCCGGCCCTGGTACTAACTCTGCTGTGGCATTGCCAGCGAGGTACATTTCTGCCCCAC
TTCTCCAGGACCTCTGGGCCGTGTGTCTTCTCATTCTGCAGCTGGCAGCAGTCTTGGCCTATGGGTT
GGGCTGGGCGAGCCCTGGGAACCACAAGGCCCTGGACTCATGATCCCTTCTGTCTCTGAGAGTCAA
GAAACAGAGGTAGCTGAAGATGGAGAGATTGGCTGTACGCTTTTCTATGCCTGGTGGCACCCTTGC
TCGCTCGTGGAGTCCGAGGAGAGCTCCAGCAGCCCGGACACTTGGCCCTCCCCGCGAGGCTGCATCC
CGCCTTCTGGCCGAGTTTTCCAAGCACATTGGAAGGAGGGGGCCCAACTGTGGAGGGCCCTGTACAGG
GCCTTTGGATGTTGCTACCTGGCCCTGGACTGTTGAAGATGGTGGGACCATGCTGGGATTCTCCGGGC
CTCTGCTGCTCTCCCTCCTGGTGGGCTTCTGGAGGAAGGTCAAGAGCCTCTAAGCCACGGCCTGCTCTA
TGTCTGGGTTGGCTGGTGGGACTGTGATAAGTGTGTGCTGTCAGAATCAGTATGGGTATGAGGTCCT
AAAGTGACACTTCAGGCACGAGTGGCTGTGCTGAGCACCTCTACCGCAAAGCCCTGAAGCTTGGGCCCA
GCCGCCCTCCACCGGGAGGTCTGAACCTACTAGGCACCGACTCTGAGAGGCTGCTCAACTTTGCTGG
CAGCTTCCATGAGGCTGGGCTGCCTCTGCAGCTGGCCATCACTCTCTACCTGCTGTACCAGCAGGTG
GGCATGGCCTTCTGGCTGGGCTGGTCTTGGCGTGTGCTGGTACCTGTCAACAAAGTATTGCCACCC
GAATCATGGCCAGCAACCAGGAGATGCTACGGCACAAGGATGCACGGGTTAAGCTCATGACAGAGTTACT
GAGTGGCATTGAGTCATCAAATCTTTCAGGTGGGAGCAGGCTCTGGGGACCGAGTGAAGGCTTGGCGG



[View online »](#)

ACTAAAGAGCTGGGACGACTCCGTGTTATCAAATACTTGGATGCAGCCTGTGTGTACCTCTGGGCTGCC
 TGCCAGTGGTCATCTGCATCACCATCTTCATCACCTATGTCTCATGGGGCACCAGCTCACTGCCACCA
 GGTGTTTACAGCGCTGGCACTTGTGCACATGCTCATTCTTCTCTCAACAATTTCCCTGGGTGATCAAT
 GGTCTCTTGAATCCAAAGTATCCCTGGACCGGATCCAGCGTTTCTCGATCTTCCAAGCTACAGCCCTG
 AGGCCTATTACAGTCTGATCCCCACAGAGCCCTCCACAGCACTGGAGCTGCACGAGGCCCTGTTCTC
 CTGGGACCCAATTGGAGCAAGCCAGAAGACCTTCATCAGTCACCTCCAAGTAAAAAGGGTATGCTGGTG
 GGCATCGTGGAAAGGTGGGCTGTGGAAAGATTTCGCTGCTGGCCGCATCACTGGGAGCTCCACAGGC
 TGTGTGGGTGGTGGCAGTGTGAGAAGTGTCCAAAGGCTTTGGACTAGCCACCCAGGAGCCCTGGATCCA
 GTGTGCCACCATCCGAGACAACATCCTCTTTGGAAAGACATTTGATGCTCAACTATACAGGGAGTTCTG
 GAGGCCTGCGCCCTCAATGATGATCTAAGCATCCTGCCTGCTGGAGACCAGACAGAGTTGGAGAGAAA
 GTGTGACCCTCAGCGGGGACAGAGGGCCCGATTGCACTTGCCCGTGTGTCTACCAGGAGAAAGCGCT
 CTATCTCTCGACGACCCTCTGGCTGCTGTGGATGCAGATGTGGCAACCCACTGTTACACAGGTGCATC
 CTGGGAGTGTGAGCCACACCACCCGGTGTGTGCACCCACCGCACTGAGTACCTGAAAGGGCTGATG
 TGGTGTGTTGATGGAAGCCGGCAATTGGTCCGAACAGGGCCTCCCTCTGAGATTCTGCCGTTGGTACA
 AGCTGTCCCACAGCCTGGGCTGAGAAGGAACAAGTGGCTACCTCAGGCCAGTCCCATCTGTATGCGAC
 CTGGAGAGAACCACCAAGGAGGAGCTGGAGGCGGAACAGAGCACATGCGGCTGCCTCGTGCAGGAGGAAA
 GCAAAAGCGAGGGCGCCGTAGCCCTGCAGTCTACCGAGCATACTGGAGGGCCATGGGCAGCGGCCCTGGC
 CGCCGCCATCCTCGTCTCTGTCTCTCATGCAAGCCACGCGCAACGGTGTGATTGGTGGCTCGCTCAC
 TGGCTGTCTCAGCTGAAGGCCGGCAGAAATGGCTCCGGGGAGGATCCAGCTTCTGCAGCCAGGCTCCA
 CAGCACTTCTCCCCACGGTGTCTTCTTCTCCCTGGAAACCTTACACCCCACTGCTCAGCACCCC
 ACTGCACAAGGCTGCTTCCAATGGCACCAGCAGCTCCACTTCTACCTCATCGTGTATGCAACATTGCA
 GGGGTGAACTCCCTCTGCACCTTCTCCGGGCTGTGCTCTTTCAGCAGGGCGCCCTTCAAGCAGCTGCCA
 GCCTACACCACCGCTACTGCATCGACTCCTCATGGCACCGGTGACTTTCTACACTCCACACCTTCCGG
 CCGGGTCTTGAACCGCTTCTCATCAGACGTAGCCTGTGTAGACGACAGCCTGCCCTTCTCCTCAACATC
 CTGCTGGCCAATTCCGTGGGCTGCTGGGCTCCTGGCTGTCTAGGTTCTGGTCTGCCCTGGTGTCTGC
 TCCTGCTACCACCTCTGAGCTTCGTCTACTACAGCGTGCAGGGCTACTACAGGGCTTCTTCCGGGAGCT
 ACGGGCCTGGGCAGCCTCACCTGGTCTCCGCTTACTCCCATCTGGCTGACACCCTGGCGGGCCTCCCT
 GTGCTCCGGGCCGAGGGGCCACTTACAGGTTTGAAGAGGAGAACCAGCGACTCTGGAGCTGAACCAGA
 GGTGCCAGTTTGTCTTCTATGCCACGATGCAGTGGTTGGACATTCGACTGCAGCTCATGGGGCAGCAGT
 GGTGAGCGCCATTGCGGGCATTGCCCTGGTGCAGCACCAGCAGGGCCTTGCCAACCCAGGGCTGGTGGC
 CTGCTGCTTTCTATGCCCTGTCTCTGACGGGCTGCTCTCGGGTCTGGTGAAGCTTTCACACAGACGG
 AAGCCATGATGGTGAAGCTCGAGCGACTGGAGGAGTATTCTGTGACGTTCCCAGGAGCCACAGCCA
 GCCACTGCAGTACCCCCACCAGCAGCGCATCAGCTGGCTGACCCAGGGAAGTGTGGAATTCAGGACGTG
 GTGCTGGTGTACCGGCCAGGGCTGCCAAATGCCCTAGATGGGGTGACCTTCCGCGTGGAGCTGGAGAGA
 AGCTGGGCATCGTGGGCCGACAGGCTCCGGCGAGTCTTCCCTGTTTCTGGTGTCTTCCGGCTGTGGA
 GCCCAACGAGGGCGAGTGTCTTGACAATGTGGACACCAGCCAGCTGGAGCTGGCCGAGCTCAGATCC
 CAGCTGGCTGTATCCCTCAGGAGCCTTCTGTTTCTCAGCGGACTATTCCGGGAGAACCTGGACCCCAAG
 GCCTACACGAGGACAGGGCCCTGTGGCAAGCCTTGGAAACAGTGTACCTGAGTGAAGTGGTGTGCGCAT
 GGGTGGCCTGGATGGAGAGCTGGGAGAAAAGGGGCCAGAACCTGCCCTAGGACAGAGACAGCTGCTGTG
 CTGGCAAGGGCTTCTTACAGATGCTAAAATCTTGTGATTGACGAGGCCACAGCAAGTGTGGACCAGA
 AGACAGACCAGCTGCTCCAGCAAACCATCTGTAACGCTTTGCCAACAAGACAGTGTGACCATCGCCCA
 CAGGCTCAACACGATCTAAACTCTGACCGTGTGCTGGTGTCTCAAGCCGGGAGGGTGGTGGAACTGGAC
 TCCCCCTCAGCCCTGCGCAACCAGCCGCACTCCCTGTTCCAGCAGCTCCTGCAGAGCAGCCAGCAGGGAG
 CCCACTCCGGACCTTCAGGGTGC

ACGCGTACGCGGCCGCTCGAG - GFP Tag - GTTTAA

Protein Sequence: >MG217391 representing NM_170680
Red=Cloning site Green=Tags(s)

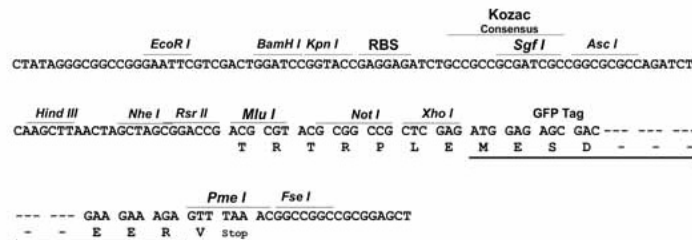
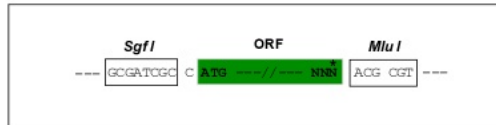
```
MEGLLAQLCGTDAARPLPLWEGDTHGCFQVLVSALPHALLAVLSACHLGTPTTNNHSPALNPGWRLRL
AASFLLSIFPLLDLLPVVLPGRPGPLWLEVLACVAVAWFTHSLALWALVHSPRGRSRGPLALALAA
FLPTPALVLTLLWHCQRGTFLLPPLPGPLGRVCLLILQLAAVLAAYGLGWAAPGEPQEPWTHDPFLSSESQ
ETEVAEDGESWLSRF SYAWLAPLLARGVREGELQQPRDTCRLPRRLHPAFLARVFAQAHWKEGAQLWRALYR
AFGCCYLALGLLKMGVTMLGFSGPLLLSLLVGFLEEGQEPLSHGLLYVLGLAGGTVISAVLQNGYGYEVR
KVTLQARVAVLSTLYRKALKLGPSPPTGEVNLGLTDSERLLNFAGSFHEAWGLPLQLAITLYLLYQQV
GMAFLAGLVLALLVPVNVKIATRIMASNQEMLRHKDARVKLMTPELLSGIRVIKFFRWEQALGDRVKACR
TKELGRLRVIKYLDAAVYVLAALPVVICITIFITYVLMGHQLTATKVFTALALVHMLILPLNNFPWVIN
GLLESKVSLDRIQRFLDLPSYSPEAYSPDPPTPESTALELHEALFSDWPIGASQKTFISHLQVKKGMLV
GIVGKVGCGKSSLLAAITGELHRLCGWVAVSEL SKGFGLATQEPWICATIRDNILFGKTFDAQLYREVL
EACALNDDL SILPAGDQTEVGEKGVTL SGGQRARIALARAVYQEKALYLLDDPLAAVDADVANHLLHRCI
LGVLSHTTRLLCTHRTEYLERADVLLMEAGQLVRTGPPSEILPLVQAVPTAWAEKEQVATSGQSPSVC
LERTTKEELEAEQSTCGCLVQEESEKSEGAVALHYRAYWRAMGSLAAAAILVSLLLMQATRNGADWWLAH
WLSQLKAGRNGSGEDPASCSPGSTALFSPRLLFSPGNLYTPLLSTPLHKAASNGTADVHFYLVIVYATIA
GVNSLCTLLRAVLAAGALQAAASLHHRLLHRLMAPVTFYDSTPSGRVLRNFSSDVACVDDSLPFLNLI
LLANSVGLLGLLAVLGSGLPWL LLLPPLSFVYYSVQGYRASFRRLRRLGSLTWSPLYSHLADTLAGLP
VLRAAGATYRFEENQRLELNQRCQFASYATMQWLDIRLQLMGAAVVSAIAGIALVQHQQGLANPGLVG
LVL SYALSLTGLL SGLVSSFTQTEAMMVSVERLEEYSCDVPQEPHSQPLQSPHQQRISWL TQGSVEFDV
VLVYRPLPNALDGVTFRVEPGEKLGIVGRTGSGESSLFLVLRLEPNAGRVLLDNVDTSQLELAE LRS
QLAVIPQEPFLFSGTIRENLDPQGLHEDRALWQALEQCHLSEVAVAMGGLDGELGERGQNL SLGQRQLLC
LARALLTDAKILCIDEATASVDQKTDQLLQQTICKRFANKTVLTI AHRNLNTILNSDRVVLVQAGRVVELD
SPSALRNQPHSLFQQLQSSQQAHSGPSGC
```

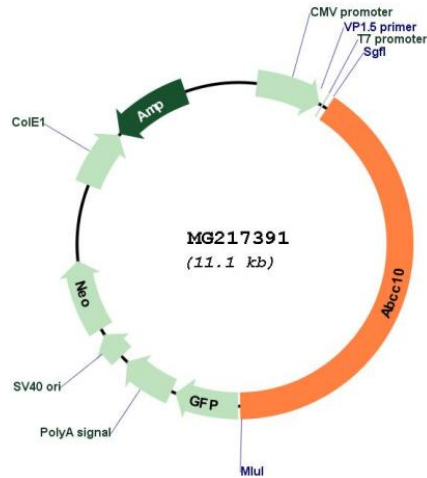
TRTRPLE - GFP Tag - V

Restriction Sites: SgfI-MluI

Cloning Scheme:

Cloning sites used for ORF Shutting:



Plasmid Map:


ACCN: NM_170680

ORF Size: 4503 bp

OTI Disclaimer: The molecular sequence of this clone aligns with the gene accession number as a point of reference only. However, individual transcript sequences of the same gene can differ through naturally occurring variations (e.g. polymorphisms), each with its own valid existence. This clone is substantially in agreement with the reference, but a complete review of all prevailing variants is recommended prior to use. [More info](#)

OTI Annotation: This clone was engineered to express the complete ORF with an expression tag. Expression varies depending on the nature of the gene.

Components: The ORF clone is ion-exchange column purified and shipped in a 2D barcoded Matrix tube containing 10ug of transfection-ready, dried plasmid DNA (reconstitute with 100 ul of water).

Reconstitution Method:

1. Centrifuge at 5,000xg for 5min.
2. Carefully open the tube and add 100ul of sterile water to dissolve the DNA.
3. Close the tube and incubate for 10 minutes at room temperature.
4. Briefly vortex the tube and then do a quick spin (less than 5000xg) to concentrate the liquid at the bottom.
5. Store the suspended plasmid at -20°C. The DNA is stable for at least one year from date of shipping when stored at -20°C.

RefSeq: [NM_170680.2](#), [NP_733780.1](#)

RefSeq Size: 4872 bp

RefSeq ORF: 4506 bp

Locus ID: 224814

UniProt ID: [Q8R4P9](#)

Cytogenetics: 17 C

Gene Summary: The protein encoded by this gene is a member of the superfamily of ATP-binding cassette (ABC) transporters. ABC proteins transport various molecules across extra- and intra-cellular membranes. ABC genes are divided into seven distinct subfamilies (ABC1, MDR/TAP, MRP, ALD, OABP, GCN20, and White). This ABC transporter is a member of the MRP subfamily which is involved in multi-drug resistance. Alternative splicing of this gene results in multiple transcript variants. [provided by RefSeq, Jul 2008]