

## Product datasheet for **MG217387**

### Spire1 (NM\_194355) Mouse Tagged ORF Clone

#### Product data:

Product Type:	Expression Plasmids
Product Name:	Spire1 (NM_194355) Mouse Tagged ORF Clone
Tag:	TurboGFP
Symbol:	Spire1
Synonyms:	6030430B19Rik; AI415299; AU022898; AW550622; Spir-1
Mammalian Cell Selection:	Neomycin
Vector:	pCMV6-AC-GFP (PS100010)
E. coli Selection:	Ampicillin (100 ug/mL)



[View online »](#)

**ORF Nucleotide Sequence:**

>MG217387 representing NM\_194355  
 Red=Cloning site Blue=ORF Green=Tags(s)

TTTTGTAATACGACTCACTATAGGGCGGCCGGAATTCGTCGACTGGATCCGGTACCGAGGAGATCTGCC  
 GCC**CGCATCGCC**

ATGGCCAATACCGTGGAGGCTGACGGGAGCAAGGATGAAGGGTACGAGGCTGCAGATGAAGGCCCGGAAG  
 ATGAAGACGGAGAGAAGAGAAGCATCTCAGCCATCCGGTCTATCAGGAGTTATGAAGATCTGTGCTGC  
 TCACCTCCCAACTGAGTCGGAGGCACCCAATCATTATCAGGCAGTATGTCGGGCCCTGTTGCGAGAAACC  
 ATGGAAGTGCATACATTTCTGACCAAAATTAAGAGTGCAAAGGAGAACCCTAAGAAGATTCAAGAAATGG  
 AAAAGGGTATGAATCTAGCACAGATCTGGAGGACCTGAAAAATGCAGACTGGGCCCGGTTCTGGGTACA  
 AGTGATGAGGGATTTGCGAAATGGGGTAAACTTAAGAAAGTCCAGCAGCGGCAGTACAACCCTCTGCC  
 ATTGAGTACCAACTGACCCCTTATGAGATGCTCATGGACGACATTCGGTGCAAAGATACACCTTGAGAA  
 AAGTAATGGTAAATGGTACGTCACCCCTCGGTTGAAAAAGAGTGCTCATGAGGTCATCCTTGACTTTAT  
 CAGATCAAGACCCCTTTAAATCCAGTTTCAGCCAGAAAAGTAAACCAACCCACCACGGCCACGGAGC  
 CTCATGAAAGAATATTAGAAGAAATTAAGCAGAAAGAAAGCTTCGACCTGTGTACCAGAAAGAAATTA  
 GACGGAGCAGACTAGATGTCACACTACGCCAGAATCTCAAAGAATGTTGGAGAATCATCTATGGTGAATGG  
 AGGCTTAACATCTCAAACAAAAGAAAATGGGCTGAGCGCTGCCAGCAGGGGTCTGCGCAGAGGAAGAGG  
 CTCCTCAAAGCCCAACCCTGGCTGAACTGGACAGCTCTGACTCTGAGGAGGAAAAAGTCTGCACAAGT  
 CAACCAGCAGCAGAGTGCCTCTCCCTCCCTCTATGAGGATCCAGTACTGGAGGCCATGTGCTCCAGGAA  
 GAAGCCTCAAATTTCTGCCCATCTCATCAACACCCAGCCAGAGAGAAGGCAGCCACCCGAGAGGCGC  
 CACTCCATTGAGAAGGAAACACCTACGAACGTGAGGCAGTTTCTGCCACCATCCAGGCAGAGCTCACGGT  
 CTCTTGTCTCTAGGATAACCGGTGTATGGCCAGGACGCCCTTTCCGACCACTTTTCTACCATACAAAC  
 AGCTTCTCTGCTGAGCTCTCATCCTTTTGAAGCAGCCATGTTTGGGGTAGCAGGGGTATGTATTATCTG  
 TTTGAGAGAGCTTTTACCAGCAGGTGGAACCCCTCAAAGGAGGAATTTCTGCTACCCAGTGGAGTGCCTCG  
 CTCTCACTGTGGAGGAAGTATGCACATCCGTCAGGTCCTGGTGAAGCAGAGCTGGAAAAGTACCAACA  
 GTATAAGGATGTCTACACTGCCCTGAAAAAGGAAAGCTCTGCTTCTGTTGCCGAACCCGGAGGTTTTCC  
 TTCTTACCTGGTCTTACACCTGTCAGTTCTGTAAGAGGCCCGTGTGCTCACAGTGTGCAAAAAGATGC  
 GGCTGCCTTCAAAGCCATACTCTACTCTACCTATCTTCTTTGGGACCTTCTGCCTTCAAAGGGGGGA  
 AAGCTGTTGAGGTCAGAAAAACCCCTCCACTAGTACCATCGGCCTCTTGAAGTATTGCCAGGTTCTCC  
 ACAAATCCAGGTCGTGGACAAGTCCGATGAGGAGCTCCAGTTCCCAAAGAGCTCATGGAGGACTGGA  
 GCACGATGGAGGTGTGTGTGACTGCAAAAAGTTCATCTCCGAGATCATCAGCTCAAGCCGGCGCAGCCT  
 GGTGCTGGCTAACAAAAGAGCCAGGTTGAAAAGGAAGACACAGTCTTTCTACATGCTCTCGCGGGCCCC  
 TCGGAGTACTGCCCTTCAAGACGGACTATCAACGAGATC

**ACGCGT**ACGCGGCCGCTCGAG – GFP Tag – GTTTAA

**Protein Sequence:**

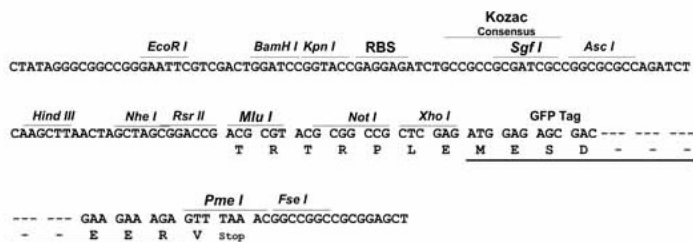
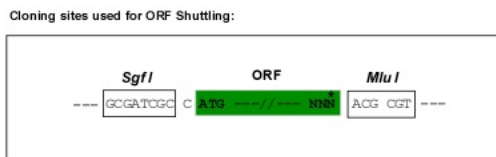
>MG217387 representing NM\_194355  
 Red=Cloning site Green=Tags(s)

MANTVEADGSKDEGYEAADEGPEDEDEGEKRSISAIRSYQDVMKICAAHLPTSEAPNHQAVCRALFAET  
 MELHTFLTKIKSAKENLKKIQEMEKGDSESTDLEDLKNADWARFWVQVMDLRNGVKLKKVQQRQYNPLP  
 IEYQLTPYEMLMDDIRCKRYTLRKVMVNGDVPPRLKKSAAHEVILDFIRSRPPLNPVSARKLKPTPPRPRS  
 LHERILEEIKAEKLRPVSPPEEIRRSRLDVTTPESPKNVGESSMVNGLTSQTKENGLSAAQGSARQRK  
 LLKAPTLAELDSSDSEEEKSLHKSTSSSSASPSLYEDPVLEAMCSRKKPKFLPISSTPQPERRQPQRR  
 HSIEKETPTNVRQFLPPSRQSSRLVPRTIGVWPRTPFRLPFSITQASLLSSHPFEAMFGVAGAMYLL  
 FERAFTSRWKPSKEEFCYPVECLALTVVEVMHIRQVLVKALEKYQYKDYVTALKKGLKFCRRTRRFS  
 FFTWSYTCQFCKRPVCSQCCKMRLPSKPYSTLPIFSLGPSALQRGESCRRSEKPKSTSHRPLRSIARFS  
 TKRSVDKSDDEELQFPKELMEDWSTMEVCVCKKFISEIISRRSLVLANKRARLKRKTQSFYMSSAGP  
 SEYCPSERTINEI

**TRTRPLE** – GFP Tag – V

Restriction Sites: SgfI-MluI

Cloning Scheme:



ACCN: NM\_194355

ORF Size: 1929 bp

OTI Disclaimer: The molecular sequence of this clone aligns with the gene accession number as a point of reference only. However, individual transcript sequences of the same gene can differ through naturally occurring variations (e.g. polymorphisms), each with its own valid existence. This clone is substantially in agreement with the reference, but a complete review of all prevailing variants is recommended prior to use. [More info](#)

OTI Annotation: This clone was engineered to express the complete ORF with an expression tag. Expression varies depending on the nature of the gene.

Components: The ORF clone is ion-exchange column purified and shipped in a 2D barcoded Matrix tube containing 10ug of transfection-ready, dried plasmid DNA (reconstitute with 100 ul of water).

- Reconstitution Method:
1. Centrifuge at 5,000xg for 5min.
  2. Carefully open the tube and add 100ul of sterile water to dissolve the DNA.
  3. Close the tube and incubate for 10 minutes at room temperature.
  4. Briefly vortex the tube and then do a quick spin (less than 5000xg) to concentrate the liquid at the bottom.
  5. Store the suspended plasmid at -20°C. The DNA is stable for at least one year from date of shipping when stored at -20°C.

RefSeq: [NM\\_194355.2](#), [NP\\_919336.1](#)

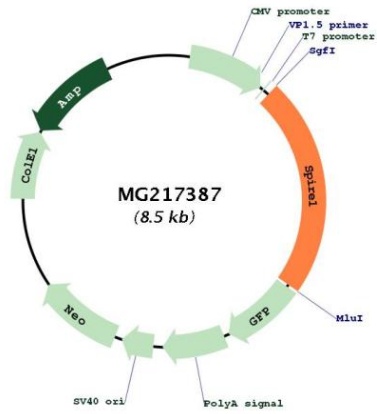
RefSeq Size: 5033 bp

RefSeq ORF: 1932 bp

Locus ID: 68166

Cytogenetics: 18 E1

Product images:



Circular map for MG217387