

## Product datasheet for **MG217350**

### Sema3d (NM\_028882) Mouse Tagged ORF Clone

#### Product data:

Product Type:	Expression Plasmids
Product Name:	Sema3d (NM_028882) Mouse Tagged ORF Clone
Tag:	TurboGFP
Symbol:	Sema3d
Synonyms:	4631426B19Rik
Mammalian Cell Selection:	Neomycin
Vector:	pCMV6-AC-GFP (PS100010)
E. coli Selection:	Ampicillin (100 ug/mL)



[View online »](#)

**ORF Nucleotide Sequence:**

>MG217350 representing NM\_028882  
 Red=Cloning site Blue=ORF Green=Tags(s)

TTTTGTAATACGACTCACTATAGGGCGGCCGGAATTCGTCGACTGGATCCGGTACCGAGGAGATCTGCC  
 GCC**CGCATCGCC**

ATGAATGTTACTAAAGATGAGAACCAAGATCCAGAAGTCAAGATCTTCACCTTTTTTCATGCTTGGATGA  
 TGTTAATCATGACGGTGCCTTTTCTCCTGTCCTGAAACGTCTAAACAAAATATTCCAAGACTCAAGCT  
 AACCTACAAAGACTTGCTGCTTTCAAACACCTGTATCCCTTTTTGGGTTTCATCAGAAGGATTGGATTTCC  
 CAGACTCTTCTTTGGATGAGGAGAGGGGCATACTGCTCCTAGGAGCCAAAGACCATGTCTTCTGCTCA  
 GTCTGGTTGACTTGAACAAGAAATTTAAGAAGATTTATTGGCCTGCTGAAAAGAACGAGTGGAGCTATG  
 TAAATTAGCTGGAAAGATGCCAATGCAGAATGTGCAAATTTTCATCCGTGTGCTTCAACCTATAATAAG  
 ACTCACGTTTACGTGTGGAACGGAGCGTTTCATCCGCTGTGGGTACATTGATCTCGGCGCCAACA  
 AGGAGAACTCATATTTAACTAGACACGCACAACCTGGAGTCTGGCAGACTGAAATGTCCTTTGATCC  
 TCAGCAGCCTTTTCTCAGTAATGACAGATGAGCACCTTACTCTGGAACAGCTTCTGATTTCCCTTGGC  
 AAAGACACTGCATTCACAAGGTCTCTGGGGCTAATGCAGGACCACCATTCCATCAGAAGTACATTTCCAG  
 AGCACCCTGGCTCAATGGAGCAAAATTTATCGGAACATTCCTCCATTCAGACACCTATAATCCAGATGA  
 TGATAAAATATATTTCTTCTTTCGAGAATCATCCAGGAAGGCAGTACTTCTGACAGAAGCATTCTTTCA  
 AGAGTTGGAAGAGTTTGTAAAGATGATGTAGGTGGGCAACGAAGTCTGATAAACAATGGACAACTTTTCC  
 TAAAGGCAAGACTGATTTGCTCGATTCTGGAAGCGATGGGGCAGATACCCATTTTGATGAACTCCAAGA  
 TATTTACTTACTCCCTACGAGAGATGAAAGAAATCCTGTAGTATATGGAGCTTTACCACAACAGCTCC  
 ATCTTCAAAGGCTCTGCTGTCTGTGTACAGCATGGCTGATATCCGAGCAGTCTTAATGGTCCCTATG  
 CTCATAAGGAAAGTCTGACCATCGCTGGGTGCAATATGATGGAAGGATACCTTACCCCGACCTGGAAC  
 GTGTCCAAGCAAAACCTATGACCCACTGATTAAGTCCACCCGAGACTTTCCAGACGATGTTATCAGTTTC  
 ATAAGGCGGCACCCTGTGATGTATAAGTCCGTGTACCCAGTGGCAGGAGCACCGACCTTCAAGAGATCA  
 ACGTGGATTACAGACTGACGCAGATAGTGGTGGATCACGTGGTCGCTGAAGACGGGCAGTATGATGTCAT  
 GTTTCTCGGAACAGACATTGGAACAGTCTGAAAGTTGTGAGCATCTCCAAGGAGAAGTGGAAATATGGAA  
 GAGGTCGACTGGAGGAGCTTCAAGTATCAAGCACCCAAACAGCTATCTTGAACATGGAGTTGTCGCTGA  
 AGCAGCAACAGTTGTACGTTGGTTCCTGGGATGGATTGGTCCAGCTCTCCTTGCACAGATGCGACACTTA  
 CGGAAAGCATGTGCAGACTGCTGTCTCGCCAGAGACCCTTACTGTGCCTGGGATGGAAATGCTTGTCTCC  
 AGATATGCACCCAGTCTAAAAGGCGAGCTAGACGCCAGGATGTAAAATATGGGGACCCAACTCACTCAGT  
 GCTGGGACATAGAAGACAGCATTAGTCATGAAACAGCTGATGAAAAGGTGATTTTGGAAATTGAATTTAA  
 TTCAACCTTTTTGGAGTGTATACCTAAATCCCAACAAGCCTCTGTTGAGTGGTACATCCAGCGGTACGGA  
 GATGAGCATCGAGAGGAGTTGAAACCTGATGAAAGGATCATCAAACTGACTATGGGCTACTGATTCGAA  
 GTCTGCAGAAGAAGGATTCTGGGATGATTTACTGCAAAGCACAGGAGCACACTTTTCATCCACACCATAGT  
 GAAGCTGACTTTGAATGTCATTGAGAATGAACAGATGGAAAATACCCAGAGGGCAGAATACCAGGAGGGG  
 CAGGTCAAGGATCTGTTGGCTGAGTCACGGTTGAGATACAAGACTACATCCAAATCCTTAGCAGCCCGA  
 ACTTCAGCCTGGACCAGTACTGTGAGCAGATGTGGTACAAGGAGAAGCGGAGACAGCGCAACAAGGGCAG  
 CCCAAAGTGAAGCACATGCAGGAAATGAAGAAGAAACGAAATCGACGACATCACAGAGACCTCGATGAG  
 CTCCAGAGATCAGTAGCTACA

**ACGCGT**ACGCGGCCGCTCGAG - GFP Tag - GTTTAA

Protein Sequence: >MG217350 representing NM\_028882  
 Red=Cloning site Green=Tags(s)

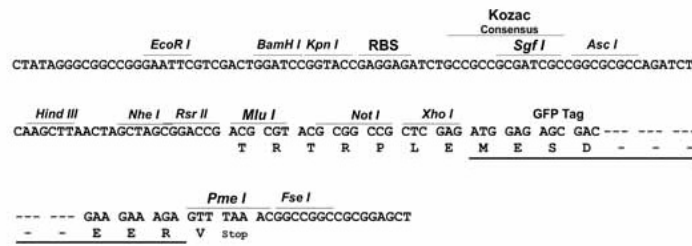
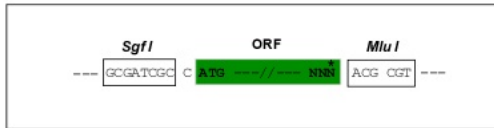
MNVTKDENPRSRSDLHLFHAWMLIMTVLFLPVTETSKQNIPLKLYKDLLLSNTCIPFLGSSEGLDF  
 QTLLLDEERGILLGAKDHVFLSLVDLNKNFKKIYWPAKVERVELCKLAGKDANAECANFIRVLQPYNK  
 THVYVCGTGAFHPLCGYIDLKANKEELIFKLDTHNLESGRLKCPFDPPQPFASVMTDEHLYSGTASDFLG  
 KDTAFTRSLGLMQDHHSIRTDISEHHWLNKAKFIGTFPIPDYTPDDDKIYFFFRESSQEGSTSDRSILS  
 RVGRVCKNDVGGQRSLINKWTTFLKARLICSIPGSDGADTHFDELQDIYLLPTRDERNPVVYGVFTTTSS  
 IFKGSAVCVYSMADIRAVFNGPYAHKESADHRWVQYDGRIPYPRPGTCCSKTYDPLIKSTRDFPDDVISF  
 IRRHPVMYKSVYPVAGAPTFKRINVDYRLTQIVVDHVVAEDGQYDVMFLGTDIGTVLKVVISKEKWNME  
 EVVLEELQVFKHPTAILNMELESLKQQQLYVGSWDGLVQLSLHRCPTYGKACADCCCLARDPYCAWDGNACS  
 RYAPTSKRARRQDVKYGDPITQCWDIEDSISHETADEKVIKIEFNSTFLECIKPSQQASVEWYIQRSG  
 DEHREELKPDRIKTDYGLLIRSLQKKDSGMYCKAQEHTFIHTIVKLTLNVIENEQMENTQRAEYQEG  
 QVKDLLAESRLRYKDYIQLSSPNFSLDQYCEQMWYKEKRRQRNKGSPKWKHMQEMKKRNRHRDLDE  
 LQRSVAT

TRTRPLE - GFP Tag - V

Restriction Sites: SgfI-MluI

Cloning Scheme:

Cloning sites used for ORF Shuttling:

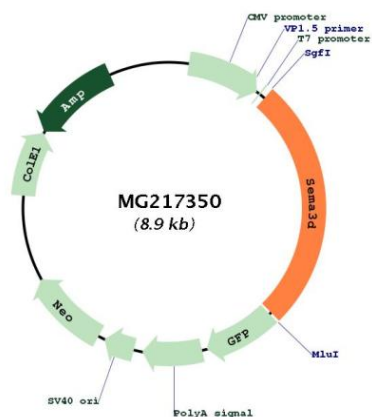


ACCN: NM\_028882

ORF Size: 2331 bp

<b>OTI Disclaimer:</b>	<p>Due to the inherent nature of this plasmid, standard methods to replicate additional amounts of DNA in E. coli are highly likely to result in mutations and/or rearrangements. Therefore, OriGene does not guarantee the capability to replicate this plasmid DNA. Additional amounts of DNA can be purchased from OriGene with batch-specific, full-sequence verification at a reduced cost. Please contact our customer care team at <a href="mailto:custsupport@origene.com">custsupport@origene.com</a> or by calling 301.340.3188 option 3 for pricing and delivery.</p> <p>The molecular sequence of this clone aligns with the gene accession number as a point of reference only. However, individual transcript sequences of the same gene can differ through naturally occurring variations (e.g. polymorphisms), each with its own valid existence. This clone is substantially in agreement with the reference, but a complete review of all prevailing variants is recommended prior to use. <a href="#">More info</a></p>
<b>OTI Annotation:</b>	This clone was engineered to express the complete ORF with an expression tag. Expression varies depending on the nature of the gene.
<b>Components:</b>	The ORF clone is ion-exchange column purified and shipped in a 2D barcoded Matrix tube containing 10ug of transfection-ready, dried plasmid DNA (reconstitute with 100 ul of water).
<b>Reconstitution Method:</b>	<ol style="list-style-type: none"> <li>1. Centrifuge at 5,000xg for 5min.</li> <li>2. Carefully open the tube and add 100ul of sterile water to dissolve the DNA.</li> <li>3. Close the tube and incubate for 10 minutes at room temperature.</li> <li>4. Briefly vortex the tube and then do a quick spin (less than 5000xg) to concentrate the liquid at the bottom.</li> <li>5. Store the suspended plasmid at -20°C. The DNA is stable for at least one year from date of shipping when stored at -20°C.</li> </ol>
<b>RefSeq:</b>	<a href="#">NM_028882.4</a> , <a href="#">NP_083158.3</a>
<b>RefSeq Size:</b>	6521 bp
<b>RefSeq ORF:</b>	2334 bp
<b>Locus ID:</b>	108151
<b>UniProt ID:</b>	<a href="#">Q8BH34</a>
<b>Cytogenetics:</b>	5 A1
<b>Gene Summary:</b>	Induces the collapse and paralysis of neuronal growth cones. Could potentially act as repulsive cues toward specific neuronal populations. Binds to neuropilin (By similarity). [UniProtKB/Swiss-Prot Function]

Product images:



Circular map for MG217350