

Product datasheet for **MG217344**

Spire1 (NM_176832) Mouse Tagged ORF Clone

Product data:

Product Type:	Expression Plasmids
Product Name:	Spire1 (NM_176832) Mouse Tagged ORF Clone
Tag:	TurboGFP
Symbol:	Spire1
Synonyms:	6030430B19Rik; AI415299; AU022898; AW550622; Spir-1
Mammalian Cell Selection:	Neomycin
Vector:	pCMV6-AC-GFP (PS100010)
E. coli Selection:	Ampicillin (100 ug/mL)



[View online »](#)

ORF Nucleotide Sequence:

>MG217344 representing NM_176832
 Red=Cloning site Blue=ORF Green=Tags(s)

TTTTGTAATACGACTCACTATAGGGCGGCCGGGAATTCGTCGACTGGATCCGGTACCGAGGAGATCTGCC
 GCC**CGGATCGCC**

ATGGAAGTGCATACATTTCTGACAAAATTAAGAGTGCAAAGGAGAACCTTAAGAAGATTCAAGAAATGG
 AAAAGGGTGATGAATCTAGCACAGATCTGGAGGACCTGAAAAATGCAGACTGGGCCCGGTTCTGGGTACA
 AGTGATGAGGGATTTGCGAAATGGGGTAAACTTAAGAAAGTCCAGCAGCGGCAGTACAACCTCTGCC
 ATTGAGTACCAACTGACCCCTTATGAGATGCTCATGGACGACATTCGGTGCAAAAGATACACCTTGAGAA
 AAGTAATGGTAAATGGTACGTCCCCCTCGGTTGAAAAAGAGTGCTCATGAGGTCATCCTTGACTTTAT
 CAGATCAAGACCCCTTTAAATCCAGTTTCAGCCAGAAAAGTAAACCAACCCACCACGGCCACGGAGC
 CTCATGAAAGAATATTAGAAGAAATTAAGCAGAAAGAAAGCTTCGACCTGTGCACCAGAAGAAATTA
 GACGGAGCAGACTAGATGCTACTACGCCAGAATCTCAAAGAATGTTGGAGAATCATCTATGGTGAATGG
 AGGCTTAACATCTCAAACAAAAGAAAATGGGCTGAGCGCTGCCAGCAGGGGTCTGCGCAGAGGAAGAGG
 CTCTCAAAGCCCAACCTGGCTGAACTGGACAGCTCTGACTCTGAGGAGGAAAAAAGTCTGCACAAGT
 CAACCAGCAGCAGAGTGCCTCTCCCTCCCTCTATGAGGATCCAGTACTGGAGGCCATGTCTCCAGGAA
 GAAGCCTCAAAAATCTTGCCCATCTCATCAACACCCAGCCAGAGAGAAGGCAGCCACCGCAGAGGCGC
 CACTCCATTGAGAAGGAAACACCTACGAACGTGAGGCAGTTTCTGCCACCATCCAGGCAGAGCTCACGGT
 CTCTTGAGGAATTCTGCTACCCAGTGGAGTGCCTCGCTCTCACTGTGGAGGAAGTGATGCACATCCGTCA
 GGTCTTGGTGAAGCAGAGCTGAAAAAGTACCAACAGTATAAGGATGTCTACACTGCCCTGAAAAAGGA
 AAGCTCTGCTTCTGTTGCCGAACCCGGAGGTTTTCTTCTTCACTGGTCTTACACTGTGCTGCTGCTGTA
 AGAGGCCCGTGTGCTCACAGTGTGCAAAAAGATGCGGCTGCCTTCCAAGCCATACTACTACTACTAT
 CTCTCTTTGGGACCTTCTGCCTTGCAAAAGGGGAAAGCTGTTTCGAGGTCAGAAAAACCCCTCCACTAGT
 CACCATCGGCCTCTTGAAGTATTGCCAGTCTCCACAAAATCCAGGTCTGTGGACAAGTCCGATGAGG
 AGCTCCAGTTTCCAAAGAGCTCATGGAGGACTGGAGCAGATGGAGGTGTGTGGACTGCAAAAAGTT
 CATCTCCGAGATCATCAGCTCAAGCCGGCAGCCTGGTGTGCTAACAAAAGAGCCAGGTTGAAAAGG
 AAGACACAGTCTTCTACATGCTCTCGGCGGCCCTCGGAGTACTGCCCTTCAGAACGGACTATCAACG
 AGATC

ACGCGTACGCGGCCGCTCGAG – GFP Tag – GTTTAA

Protein Sequence:

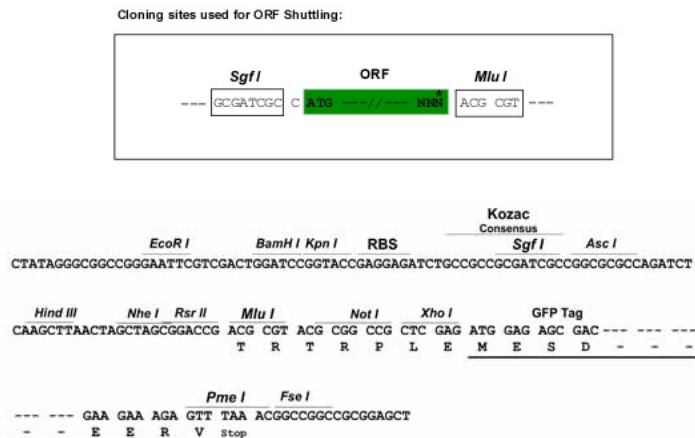
>MG217344 representing NM_176832
 Red=Cloning site Green=Tags(s)

MELHTFLTKIKSAKENLKKIQEMEKDESSTDLEDLKNADWARFVWQVMRDLRNGVKLKKVQQRQYNPLP
 IEYQLTPYEMLMDDIRCKRYTLRKVMVNGDVPPRLKKSHEVILDFIRSRPPLNPVSARKLKPTPPRPRS
 LHERILEEIKAEKLRPVSPPEEIRRSLDVTTPESPKNVGESSMVNGGLTSQTKENGLSAAQQGSAQRKR
 LLKAPTLAELDSSDSEEEKSLHKSTSSSSASPSLYEDPVLEAMCSRKKPKFLPISSTPQPERRQPPQRR
 HSIEKETPTNVRQFLPPSRQSSRSLEEFYCPVECLALTVEEVMHIRQVLVKALEKYQQYKDVYALKKG
 KLCFCRTRRFSTWYSYTCQFCKRPVCSQCKMRLPSKPYSTLPISLGLPSALQRGESCRRSEKPSST
 HHRPLRSIARFSTKRSRVDKSDDELQFPKELMEDWSTMEVCVCKKFISEIISRRSLVLANKRARLKR
 KTQSFYMSSAGPSEYCPSEPTINEI

TRTRPLE – GFP Tag – V

Restriction Sites:

Sgfl-MluI

Cloning Scheme:


ACCN: NM_176832

ORF Size: 1545 bp

OTI Disclaimer: The molecular sequence of this clone aligns with the gene accession number as a point of reference only. However, individual transcript sequences of the same gene can differ through naturally occurring variations (e.g. polymorphisms), each with its own valid existence. This clone is substantially in agreement with the reference, but a complete review of all prevailing variants is recommended prior to use. [More info](#)

OTI Annotation: This clone was engineered to express the complete ORF with an expression tag. Expression varies depending on the nature of the gene.

Components: The ORF clone is ion-exchange column purified and shipped in a 2D barcoded Matrix tube containing 10ug of transfection-ready, dried plasmid DNA (reconstitute with 100 ul of water).

Reconstitution Method:

1. Centrifuge at 5,000xg for 5min.
2. Carefully open the tube and add 100ul of sterile water to dissolve the DNA.
3. Close the tube and incubate for 10 minutes at room temperature.
4. Briefly vortex the tube and then do a quick spin (less than 5000xg) to concentrate the liquid at the bottom.
5. Store the suspended plasmid at -20°C. The DNA is stable for at least one year from date of shipping when stored at -20°C.

RefSeq: [NM_176832.2](#), [NP_789802.1](#)

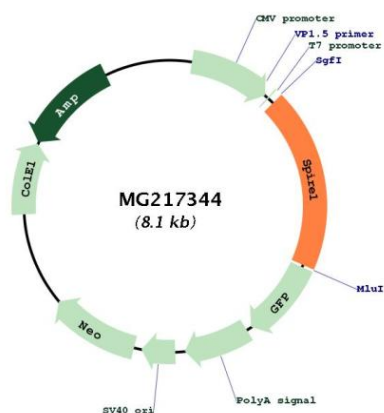
RefSeq Size: 4761 bp

RefSeq ORF: 1548 bp

Locus ID: 68166

Cytogenetics: 18 E1

Product images:



Circular map for MG217344