

Product datasheet for **MG217318**

Lingo2 (NM_001166000) Mouse Tagged ORF Clone

Product data:

Product Type:	Expression Plasmids
Product Name:	Lingo2 (NM_001166000) Mouse Tagged ORF Clone
Tag:	TurboGFP
Symbol:	Lingo2
Synonyms:	B230217C06Rik; Lern3; Lrrn6c
Mammalian Cell Selection:	Neomycin
Vector:	pCMV6-AC-GFP (PS100010)
E. coli Selection:	Ampicillin (100 ug/mL)



[View online »](#)

ORF Nucleotide Sequence:

>MG217318 representing NM_001166000
 Red=Cloning site Blue=ORF Green=Tags(s)

TTTTGTAATACGACTCACTATAGGGCGGCCGGAATTCGTCGACTGGATCCGGTACCGAGGAGATCTGCC
 GCC**CGGATCGCC**

ATGCTTCACACGGCTATACCATGCTGGCAGCCATTCTGGGTCTGGCTGTGGTGTACTCTTAATGGGAT
 CCACCATTGGCTGTCTGCTCGCTGTGAGTGCTCCGCCAGAACAATCTGTTAGCTGCCACAGAAGACG
 ATTGCTCGCGATCCCAGAAGGCATTCCATTGAGACCAAATCTTGGACCTGAGCAAAAATCGACTAAAG
 AGCATAAACCTGAAGAGTTCATCTCATCTCTGTTGGAGGAGATAGACTTGAGCGACAACATTATTG
 CCAATGTGGAGCCTGGGGCATTTAACAATCTCTTTAACCTGCGTTCCTCCGCCTAAAAGGCAATCGCCT
 TAAGTTGGTCCCTTAGGAGTATCACAGGACTGTCCAACCTCACAAGCTTGACATTAGTGAGAATAAG
 ATTGTCATTTTGTGGACTACATGTTCCAGGATCTGCATAACCTGAAGTCTCTAGAAGTGGGGGACAATG
 ATTTAGTGTATATCTCACACAGGGCCTCAGCGGACTACTTAGCTGGAGCAGCTCACCTGGAGAAGTG
 CAACTTGACAGCAGTACCAACAGAAGCCCTTTCCCATCTCCGAGCCTCATCGCCTGCATCTGAAGCAT
 CTCAATATCAACAATATGCCTGTGTATGCCTTTAAAAGATTGTTCCACCTGAAAAACCTAGAGATCGACT
 ATTTGGCCTTTGTTGGATTGATGCCAGCCAACAGCCTCTATGGTCTCAACCTCACGTCCCTTTCAATCAC
 CAACACCAACCTGTCCACTGTCCCTTCTCGCCTTTAAACACCTTGATACCTGACCCACCTTAACCTC
 TCCTACAAATCCCATCAGCACTATTGAAGCTGGCATGTTCTCTGACCTGATCCGCCTACAGGAGCTCATA
 TAGTGGGGGCCAGCTCCGCACTATTGAGCCTCACTCCTTCCAAGGGCTCCGCTTCTCCGTGTGCTCAA
 TGTATCTCAGAACCTGCTGGAACATTGGAAGAGAAGCTTTCTCCTCCCTAGGGCTTTGGAGGTCCTG
 AGCATTAAACAACAACCCACTAGCCTGTGACTGCCGACTCCTCTGGCTCCTGCAGCGACAACCCAACCTGC
 AGTTTGGGGGCCAGCAGCCATGTGTGCTGGGCCAGACACCATCCGTGAGAGATCATTTAAGGATTTCCA
 TAGCACTGCTCTTTCTTTTATTTTACCTGCAAAAAACCCAAAATCCGTGAAAAGAAGTTACAGCATCTC
 CTCGTGGATGAAGGGCAAACGGTCCAGCTGGAGTGCAACGCTGATGGAGACCCGAGCCCGTGATTTCT
 GGGTGACACCTCGAAGGCGTTTTATCACCAAGTCCAACGGAAGGGCCACTGTGTTGGGTGATGGCAC
 CTTGGAAATCCGTTTTGCCAGGATCAAGACAGTGGGATGATGTTTGCATCGCGAGCAACGCTGCTGGG
 AACGATACCTTACAGCATCTCTACTGTGAAGGGATTACGTCAGACCGCTTCTTTACGCAAACAGGA
 CCCCTATGTACATGACTGACTCCAACGACACCGTTTCCAACGGCACTAATGCCAATACTTTCTCCCTGGA
 CCTTAAAAAATACTGGTATCTACAGCCATGGGCTGTTTACATCTCTGGGAGTGGTTTTATTTGTTTT
 CTCCTTCTTTTGTGTGGAGCCGAGGAAAGGCAAGCACAAAAACAGATTGACCTTGAGTATGTGCCCC
 GAAAAACAATGGTGTGTTGTGGAAGGGGAGGTGGCTGGCCCCAGGAGTTCAACATGAAAATGATC

ACGCGTACGCGGCCGCTCGAG – GFP Tag – GTTTAA

Protein Sequence:

>MG217318 representing NM_001166000
 Red=Cloning site Green=Tags(s)

MLHTAIPCWQPFLLAVVLLMGSTIGCPARCECSAQNKSVSCHRRRLLAIPGPIETKILDLSKNRLK
 SINPEEFISYPLLEEIDLSNIIANVEPGAFNNLFLNLSRLKGNRLKLVPLGVFTGLSNLTKLDISENK
 IVILLDYMFDLHNLKSLEVDNDLVYISHRAFSGLLSLEQLTLEKCNLTAVPTEALSHLRSLIALHLKH
 LNINMPVYAFKRLFHLKNLEIDYWPLLDLMPANSLYGLNLTSLITNTNLSTVPFLAFKHLVYLTHLNL
 SYNPISTIEAGMFSDLIRLQELHIVGAQLRTIEPHSFQGLRFLRVLNVSQNLELLEENVFSSPRAEVL
 SINNNPLACDCRLLWLLQRPNLQFGGQPPMCAGPDTIRERSFKDFHSTALSFYFTCKPKPKIREKQLHL
 LVDEGQTVQLECNADGDPQPVISWVTPRRRFITTKSNGRATVLDGDTLEIRFAQDQDSGMYVCIASNAAG
 NDTFTASLTVKGFSDRFLYANRTPMYMTSDNDSVSNGTNANTFSLDLKTLVSTAMGCFVFLGVVLF
 LLLFVWSRGGKHKNSIDLEYVPRKNNGAVVEGEVAGPRRFNMKMI

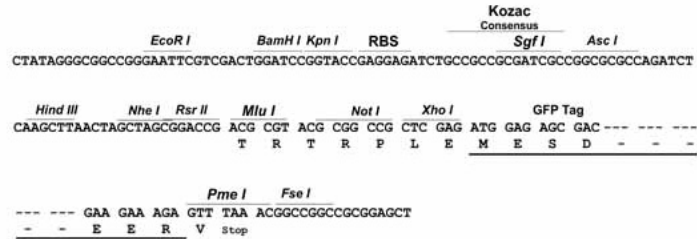
TRTRPLE – GFP Tag – V

Restriction Sites:

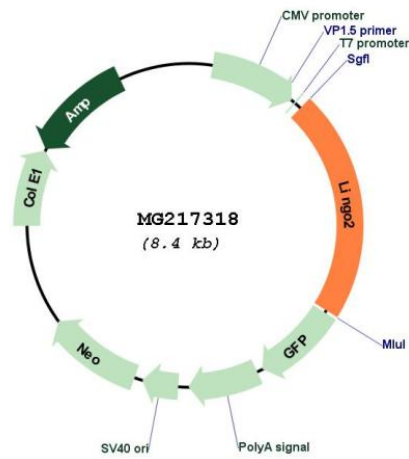
Sgfl-MluI

Cloning Scheme:

Cloning sites used for ORF Shutting:



Plasmid Map:



ACCN: NM_001166000

ORF Size: 1818 bp

OTI Disclaimer:	The molecular sequence of this clone aligns with the gene accession number as a point of reference only. However, individual transcript sequences of the same gene can differ through naturally occurring variations (e.g. polymorphisms), each with its own valid existence. This clone is substantially in agreement with the reference, but a complete review of all prevailing variants is recommended prior to use. More info
OTI Annotation:	This clone was engineered to express the complete ORF with an expression tag. Expression varies depending on the nature of the gene.
Components:	The ORF clone is ion-exchange column purified and shipped in a 2D barcoded Matrix tube containing 10ug of transfection-ready, dried plasmid DNA (reconstitute with 100 ul of water).
Reconstitution Method:	<ol style="list-style-type: none">1. Centrifuge at 5,000xg for 5min.2. Carefully open the tube and add 100ul of sterile water to dissolve the DNA.3. Close the tube and incubate for 10 minutes at room temperature.4. Briefly vortex the tube and then do a quick spin (less than 5000xg) to concentrate the liquid at the bottom.5. Store the suspended plasmid at -20°C. The DNA is stable for at least one year from date of shipping when stored at -20°C.
RefSeq:	NM_001166000.1 , NP_001159472.1
RefSeq Size:	4101 bp
RefSeq ORF:	1821 bp
Locus ID:	242384
UniProt ID:	Q3URE9
Cytogenetics:	4 A5