

Product datasheet for **MG217292**

Map4k1 (NM_008279) Mouse Tagged ORF Clone

Product data:

Product Type:	Expression Plasmids
Product Name:	Map4k1 (NM_008279) Mouse Tagged ORF Clone
Tag:	TurboGFP
Symbol:	Map4k1
Synonyms:	Hpk1; mHPK1
Mammalian Cell Selection:	Neomycin
Vector:	pCMV6-AC-GFP (PS100010)
E. coli Selection:	Ampicillin (100 ug/mL)



[View online »](#)

ORF Nucleotide Sequence:

>MG217292 representing NM_008279
 Red=Cloning site Blue=ORF Green=Tags(s)

TTTTGTAATACGACTCACTATAGGGCGGCCGGGAATTCGTCGACTGGATCCGGTACCGAGGAGATCTGCC
 GCC**CGGATCGCC**

ATGGCCCTTGTGGACCCCGACATTTTTAATAAGGACCCTCGAGAACACTATGATCTACTGCAACGACTGG
 GTGGTGGAACTTATGGAGAAGTATTCAAGGCTCGCGACAAGGTGTCTAAGGACCTGGTGGCTTTGAAGAT
 GGTGAAGATGGAGCCTGATGATGACGTCGCCACCCCTTCAGAAGGAGATTCTCATGCTGAAAACTGCCGG
 CACGCCAACATCGTGGCTTACCATGGCAGTTACCTCTGGCTGCAGAAGCTGTGGATCTGCATGGAATTCT
 GTGGAGCTGGTTCTCTCCAGGACATCTACCAAGTACTGGCTCTCTGTCCGAGCTCCAGATCAGCTATGT
 GTGCCGGGAAGTCTTCAGGGACTGGCTACCTGCATTACAGAGAAGAAGATACATCGAGACATCAAGGGA
 GCCAACATCCTCATCAACGACTGCGGGGAGGTTAAGCTGGCTGACTTTGGGATCTCAGCCCAGATTGGGG
 CGACACTGGCCCCGCGCCTTTCTTTTATTGGGACACCGTACTGGATGGCTCCAGAGGTGGCAGCGGTGGC
 CCTGAAGGGTGGATAACAATGAGCTGTGCGACATCTGGTCTTTGGCATCACAGCCATCGAGCTGGCTGAG
 CTTCCAGCCCCCTCTTTGATGTGCACCCTCTCAGGGTTCTTCTCCTCATGACCAAGAGCGGGTACCAGC
 CTCTCGGCTGAAGGAAAAGAGCAGATGGTCATCTTCTCCACAACCTTTGTCAAAGTACCCCTCACTAA
 GAACTCCAAGAAACGCCCAAGTCCACCAAGATGCTCAGTCATCAGCTGGTGTCCAGCCAGGGTGAAC
 AGAGGCCCTGATCTTGGATCTTCTTGACAAAATGAAGAATCCTGGGAAGGGGCTGCCTGTTGATATTGAAG
 ATGAGGAGCCTGAGCCACCCCTGCCATCCCTCGGCGGATCAGATCTACCTACCGGGCCAGCTCACTAGG
 GATCCCAGATGCAGACTGCTGCCGGAGGCAAATGGAGTCCAGAGGCCAGATGCGTGGACTGCAGACCT
 CAGGCTGAAACTGTTTCGCTTATATCCCCCTGCACACTTCGGGAGCACCAGTCCCAGGAGTCAGCTGTCAG
 ATCTGTATGACGACTATGATGATGTGGACATCCCTGCCCTTCAGAGAACATACTCTCCACTGCCCCC
 CAAGCCCAAGTTTCGGTCTCCATCAGATGATGGTTCTGGAGGAATTAGGGACGATGGGCAATTGAGCCCA
 GGGGTTCTGGTTCGATGTGCAAGTGGGCCCCCTCCACGTACTCCCCGACCTGGACCTCCCCAGCGACCT
 GCAGCCCTCACCTCACAGCTCGCTCAGATCCCTCATTGTGGAACCCAGCTGCTCCGGAGCCAGGCCAGCC
 CCCACTCGTACCCCAAGGAAGGAAAAGATGAGGGGAAAGATGGAGAACGAGAAGCGCAGAGAGAAATAT
 CCCCTTCTTGAAAATTATTCAATGGCTGTCCCCTTCAGATCCACAGCACAGCTGCCTGGACACATCCCT
 CTACAAAAGATCAGAACCTGCTCCTGGGGCAGAGGAAGGCATTTTCATACTGAACCGGAATGATCAGGA
 GGCCACGCTGAAATGATCTTCCCTGGCCGCACAACCTGGCTCTATTGCATCAACAACCTCCTCATGTCT
 CTCTCAGGAAGACACCCTACCTGTATTCTCATAGCATCTGGGCTGCTTGAAAGGAAAGACGGCAGAA
 CGGGAAGCCCCATTGCTCACATTAGCCCTACCGGTTACTGGCAAGAAAGAACATGGTCTCCAGTAAGAT
 CCAGGACACCAAAGGCTGCCGGGCTTGCTGTGTGGCTGAGAGTGCTAGCTCTGGGGGCCATTCTTATGT
 GGGGCAATTGGAGACGCTGTGGTTTTGCTCCAGTGGTACCAACCAATGAACAAATTTCTTGCTGTCCGGC
 AGGTGCTGTTCCCGCTGCCACGCCGCTGCCGGTGTTCACGCTGCTGACAACGCCGGGCTCCGAGCTGCC
 AGCTGTGTGCATCGGCGTGAGCCCGGGCAGGCGGCAAAGTCCGTGCTCTTCCACACCGTGCCTTCGGT
 GCGCTGTCTGCTGGCTGGACGACTCCAGCAGGAGCACAAGGGACCAGTGCAGGTGATCCAAGTAAAGG
 AAGACATGGTGATGGTGTGATGGATGGCTCTCTAAAGCTAGTGACCCAGAGGGGGCACCAGCTCCTGG
 GCTCCGCACCCCTGAGATCCCCATGACAGAAGCGGTTCGAGGCTGTGGCTATGGTTGAAGATCGACTCGAG
 GCCTTCTGGAAGCATGGAGTTCAGGTGTGGGCTCCAGGCTTGAACAGCCGCTGCAGGAGCTGAGAGACC
 CCACCCTCACCTTCCGTCTGCTCTGCTCCCCAGGCCGTAAGTGGTGGAGACAAGGCCACCGATGACCC
 TACGGCCCCAGCAACCTCTACATCCAGGAA

ACGGTACGCGGCCGCTCGAG - GFP Tag - GTTTAA

Protein Sequence: >MG217292 representing NM_008279
 Red=Cloning site Green=Tags(s)

MALVDPDIFNKDPREHYDLLQRLGGGTYGEVFKARDKVSVDLVALKMKMEPDDDDVATLQKEILMLKTCR
 HANIVAYHGSYLWLQKLWICMEFCGAGSLQDIYQVTGSLSELQISYVCREVLQGLAYLHSEKKIHRDIKG
 ANILINDCGEVKLADFGISAQIGATLARRLSFIGTPYWMPEVAVAVALKGGYNELCDIWSLGITAIELAE
 LQPPLFDVHPLRVLFMTKSGYQPPRLKEKSRWSSSFHNFVKVTLTKNSKKRPSATKMLSHQLVSPGLN
 RGLILDLLDKMKNPGKGLPVDIEDEEPEPPPAIPRRIRSTYRASSLGIPDADCCRRQMEFQRPRCVD CRP
 QAETVRLYPPAHFGSTSPRSQLSDSDDDYDDVDIPAPSENIPPLPPKPKFRSPSDDGSGGIRDDGQLSP
 GVLVRCASGPPRTPRPGPPPATCSPHLTARSDPSLWNPAAPEPGQPPLVPPRKEKMRGKMENEKRREKY
 PLLVKLFNGCPLQIHSTAATHPSTKDQNLGAEEGIFILNRNDQEATLEMI FPGRTTWLYCINNLLMS
 LSGKTPYLYSHSILGLLERKDGRTGSPIAHISPHRLLARKNMVSSKIQDTKGCRAACVAESASSGGPFLC
 GALETSVVLLQWYQPMNKFLLVRQVLFPLPTLPVFTLLTTPGSELPAVCIGVSPGQAASVLFHTVRFG
 ALSWLDSSSTEHKGPVQVIQVKEDMVMVLMGSLKLVTEGAPAPGLRTP EIPMTEAVEAVAMVEDRLE
 AFWKHGVQVWAPGLKQPLQELRDPTLTFRLLCSPRPVVVETRPTDDPTAPSNLYIQE

TRTRPLE - GFP Tag - V

Restriction Sites: SgfI-MluI

Reconstitution Method:

1. Centrifuge at 5,000xg for 5min.
2. Carefully open the tube and add 100ul of sterile water to dissolve the DNA.
3. Close the tube and incubate for 10 minutes at room temperature.
4. Briefly vortex the tube and then do a quick spin (less than 5000xg) to concentrate the liquid at the bottom.
5. Store the suspended plasmid at -20°C. The DNA is stable for at least one year from date of shipping when stored at -20°C.

RefSeq: [NM_008279.2](#), [NP_032305.2](#)

RefSeq Size: 2699 bp

RefSeq ORF: 2484 bp

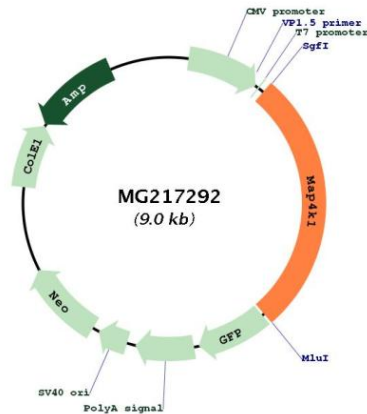
Locus ID: 26411

UniProt ID: [P70218](#)

Cytogenetics: 7 B1

Gene Summary: Serine/threonine-protein kinase, which may play a role in the response to environmental stress. Appears to act upstream of the JUN N-terminal pathway. May play a role in hematopoietic lineage decisions and growth regulation. Able to autophosphorylate. [UniProtKB/Swiss-Prot Function]

Product images:



Circular map for MG217292