

## Product datasheet for **MG217235**

### Kif20b (NM\_183046) Mouse Tagged ORF Clone

#### Product data:

Product Type:	Expression Plasmids
Product Name:	Kif20b (NM_183046) Mouse Tagged ORF Clone
Tag:	TurboGFP
Symbol:	Kif20b
Synonyms:	33cex; B130024C23; C330014J10Rik; magoo; Mphosph1
Mammalian Cell Selection:	Neomycin
Vector:	pCMV6-AC-GFP (PS100010)
E. coli Selection:	Ampicillin (100 ug/mL)
ORF Nucleotide Sequence:	>MG217235 representing NM_183046 Red=Cloning site Blue=ORF Green=Tags(s)

TTTTGTAATACGACTCACTATAGGGCGGCCGGAATTCGTCGACTGGATCCGGTACCGAGGAGATCTGCC  
GCC**CGATCGCC**

ATGGAATCTCACTGAATCCAGATGGAGTGCCTAGACCGTCTTACGTTTTAGTGCTGACCCAATTGCAA  
GGCCTTTGGAAATCAATTTGATGGTGTTAAGCTTGATCTCTCATGAGTTTCCTTAGTCGCCTCAA  
CCCTGCGGCAAACAGTTGGGATCTAAAACTATCTTCAAGTTTGTCTTGAATAAGACCATTTACACAG  
TCAGAAAAAGAACATGAGGCTGAGGCTGTGTCAAGTTTGGATTACAGTCTGTTCTGCTGAAAGACC  
CTCAAAGCATCCTTGCCACTTAAAGTGAAGAGCTCTGGACAGGTGGCACAGAAATTCAGTTTTCTAA  
GGTTTTGGACCTGAAACTTACAGAAAGATTTCTTCTGGGTTGCATTATGCAGCCAGTAAAGGACCTC  
TTAGAAGGACACAGTCTGACTGATCTTACATATGGTCTGACCAATTCTGGAAAAACATATACATTTCAAG  
GCACAGAAGAAAAATTGGTATTTGCCTAGAACACTGAATGTATTGTTGATAGTCTTCAGGAAAGACT  
ATATACGAAGATGAGCTTCAAACACACAGATGTAGAGAATACTTAAAAATTATCATCTGATCAAGAGAAG  
GAGGAAAGTGCTAACAAAAATACATTGCTGCGACAAATTAAGGAGGTTACCATACATAATGACAGTTATG  
ACGTTCTTTGGGACACTTAACAACTCTTGGACTATCCAGAATTTGAAGAATCCGTGAACAGTTGTGA  
CCAGTCCAGTCTGAATGTGGATAATATAAAGTATTCTGTGTGGTTTTCTTCTTTGAAATTTACAATGAA  
AGTATTTACGATTTGTTGTTCTGTCTCTAAGTTTCAAAGAGAAAAATGTTACGACTTTCCCAAG  
ATATAAAGGGCTATTCTTTATAAAGATCTGCAGTGGTCCAGGTATCTGACTCTAAAGAAGCATATAG  
ACTCTTAAAACTAGGAGTGAAGCATCAGAGCGTTGCTTTCACCAAAGTGAACAATGCTTCTAGTAGAAGT  
CACAGCATATTTACTATTAGAATATTACAGATAGAAGATTCTGAAATACCTCGTGTAAACAGGTTAGTG  
AATTGTCTCTATGTGATCTTGTGGTTCAGAACGAAGCATGAAGACACAAAACGAAGGTGAAAGGTTAAG  
AGAGGCTGGGAATATCAACACTTCTTTATTGACTCTGGGAAAGTGTATCAATGTTTTGAAGAACAGTGAA  
AAGTCAAAGGTTGAGCATGTGCCTTTCCGAGAAAGTAACTGACCCACTATTTCAAAGTTTTTCTACTG  
GAAAAGGGAAAAATGCATGATCATCAATATTAGTCAGTCTTGTCTGCCTATGATGAGACTCAATGT  
CCTGAAGTTCTCAACACTGCGCAAAGGTCTATGTTCCGGATACTTTAAGTTCTTCTCAAGAGAAATCT



[View online »](#)

TTTGCATCTAACAAATCTTTACAAGATGTATCATTAGACAGTAATTTGGACAATAAAATACTAAATGTAA  
 AAAGAAAACTGTTTCATGGGAAAAATAGTCTAGAAGATGTGCTTAAAAATGAAGATTTGGTTGAGGACTT  
 AGAAGAAAATGAAGAAACACAAAACATGGAAACGGAACCTACAGATGAAGATAGTGATAAGTCATTAGAG  
 GAATGCAGAGTTTCCACCTGCCACAAAAAGAACAAGGAACCTGTTGGATTTAATAGAAAAGTTGAATAAAA  
 GACTAATAATGAAAAAAGAAAAATTAACATTGGAACCTAAAAATCCGAGAGAAGTTACACAGGAATT  
 CACTCAGTATTGGAGCCAACGGGAAGCCGATTTAAGGAGACACTTCTTCATGAACGAGAGATATTAGAA  
 GAAAACGCTGAACGTCGCTTGGCAATCTTCAAAGATTTGGTTGGAAAAATGTGACAGTCAAGATGAACCAA  
 CAAATAGAAATTTGTGACATAGAACTTGAACCTGAAGAAGCTCATAAATTATGTAGGAGTTGAAGATATTTT  
 TCATTCTCTTCAAGATGATGTCCTGATATTAAGAAACAGGCCGAACCTGCTCATTGTATATTACATCT  
 CTTGTTGATCCCCAGGAAGCTATTGCTGTTTGCAGCTAAAGTTTAAATCAAGTTAAAGCAGAATTAGCTG  
 AAATAAAGAAGAATTAATTAAGCCCAAGAAGAGCTAAAAACAGAGAGCAACTCTTTGGTTCCAGGC  
 ACTCAAGACATCAAGTAAGGTTGATACATCTTTAACCAGCAATAAGTCAACTTGTAAATGAAACAAGTGAA  
 ATGCCAAAGAACAGTAGAGCCAGACACATTGAGAAAGGAAAAGATTAATGAAGATGGACTTCAGCTTG  
 GTGAGCCACCAGCAAAGAAAGGGCTTAACTCGTTAGTCCACCCATCACCGAAGAGCAAAAACAAAATGGG  
 AGAAATGCAACAGTCTGTTTCAGAAGTTGTGGAAGGCAATAGAGTTTTGAAGGAAAAGAAATGAAGAGCTA  
 AAAAGACTTTTAACTATTGGTGAGAATGAACTCAGAAAATGAAAAGGAGGAAAAAGCAGAATTAATAAAC  
 AGGTTGTGAGTTTGCAGCAGCAACTTCGTTTCTTTGAAGAAAAGAACTCATCCCTGAGGGCAGATGTAGA  
 GCAAAATCCAGGCCAGTTACAACAGTGCAGTTGCCGAGCTGCAACACAGAAAAGCCGTGAACCAGGAGCAG  
 AGGGACAGGATCCTGAAATATCACAGGAGATGGAGACTGCTGCAAGAAGTATCGAGAGCAATGTTTCAC  
 AGATAAAACAAATGCAACAAAAATAGATGAATTGCGGTCACTTGATTACCTTCTCATATTTCAAAAAT  
 AGATTTACTTAATCTCCAGGATCTATCAAGTGGTGCTAAAGGGGATAATTGTCTGAACACATCACAGCAG  
 CTTCCAGGTGGTACTTCTCAAGTACGTGGGTTAAGAATATCACACTCAGGAGATCAGCAGGGAAAAAT  
 CCTTCCACGCGAGTATTGAAGCCATCTGGGAAGAATGAAAGAGATTGTGAAGGCTTCTCCAAAAGTCT  
 TCATCAGATTCAGGGACTAGAAGAACAATTGAAAAATTAACAGGTGGAAGTAAAAGGATACAGGGAGGAG  
 AACAGTGACCTCCGAGCACAGGAGGCCAGGTAAGAATAGAGTCAACCAGCTGAAGGAGAAAGAAAGTCT  
 TCATCCAGCAGCTCAGAGAAGAACTGCAAGAAAAAGTGTGAGTCTCCGTGTTCAAGTACAGCTTGTAGC  
 GGAAAGAGAGCAAGCTCTTTCAGAGCTTCCCAGGATGTTACCTGCTACAAGGCAAAAATAAAGGACCTT  
 GAGGTGATAGTAGAGACCCAGAAAGATGAGTGTAAAGCGCTTAGTTGAGTTAGAGCAAAGCATTTTAGAGA  
 AGGAATCTGCCATCTTAAACTGGAAGCAAACTAAAGGAATGTGAAGCAAAGCATCAGGATCACATCAG  
 AACCAACGATCTAAGTGCAAAGGAAGTCAAGTTCAGAGAAGAAGTACACGCTGGCGAATAATTTGCAT  
 GATACGAAACAGTACTTCAAGTCAAAGGAAGAAGAAAATGAAATAGCAGACAAGAGACAGAAAAGTTGA  
 AAGAGGAGCTTGCTGCAACTCTATTCTTACTCAGAATCTCAAAGCAGACCTTCAGAAGAAGGAAGAAGA  
 TTGTGCTGAGCTGAAAGAGAAGTTCATTGATGCCAAAAAGCAGATTGAGCAGGTACAGAGGGAGGTATCT  
 GTAATGCGTGATGAAGAGAAATTAATGAGGATTAATAATGAACTGGAGAAAAAGAAAAACCAGTATT  
 CTCAGGACTTAGATATGAAACAACGAACCATTCAGCAACTTAAGGAGCAGTTAAGTAATCAGAAAATGGA  
 AGAAGCTGTACAACAGTATGAGAAAGTGTGCAAGATCTCAGTGTAAAGGAGAAGCTGGTTGAAGACATG  
 CGACTGACGCTAGTGGAGCAGGAGCAGACTCAGGCAGAGCAGGACCGGGTCTCGAGGCCAAGTCAAGG  
 AAGCAGACTGGCTAGCCACAGAATTGGATAAATGGAAAGAAAAATCAAAGATCTGGAACCAGAAAGTAA  
 TCAGAGGTTAAACACAGGAACCATGGATGACCTAGACGTGCTTACCAGGAAGTTCAGCAAGCTTCAGGAC  
 GAGCTGCAGAACTGAAAGAGAAATATAAAGCTGATAGAAAGAAGTGGTTAGAAGAAAAAGCTGTCTTTA  
 CCACTCAAGCGAAAGAAGCAGAAAATGTACGAAACAGGGAGATGAGAAAATATGCTGACGACAGGGAGCG  
 CTGTTTAAAGCTGCAGAAATGAAGTGAACAACACTGACAGCACAGCTGGCAGAGAAAAATAGTGAGCTTCAG  
 AAGTGGAGAGAAGAGCGTGACCAGCTGGTACAGCTGTAGAGACACAGATGAAGGCTCTGCTCTCCAGCT  
 GCAAGCACAAGGATGAAGAAATCCAGGAACCTAAGAAAGGCTGCAGCAAAGAGCACCGGGACAGAAAACCA  
 AACCATGAATCCCAAGCCTGAATATAATGATTCCGTTGATCTTGGTGGAGTTGAAACTGAACCTCAGTCA  
 ACAAGTTTGGAAATTTCTAGGAACACAGCAGAGGACGGATCTGTAGTTCTTGACTCTTGTGAAGTGTCAA  
 CAGAAAATGTACAAAGTACTCGATTTCCAAAACCTGAATTGGAGATTCAGTTTACACCTTTCAGCCAAA  
 CAAAATGGCAGTGAAGCACCTGTTGTCCACACCAGTCAAAATTAAGATCCCCAAGGCACGGAAGAGG  
 AAGAGTGGTGAAGTGGAGGAGGACTTGGTGAATGTGAAAATAAGAAGAATTAACCCCCAGAAATGATG  
 TGAAGTTTCCCGTTTCAGAGCATAGAAATCCCTGTCAAAAAGGAACAAAAGGTTTCCGTTGGTCCATC  
 ATCTAAGAAAATTAATCTTACGGAGCCAAGCATCTACAGTTAGTGCAAAACATAGCCTCTAAAAAAGA  
 GAGGGAACACTACAGAAATTTGGAGACTTCTGCAGCATCTCCAACAATTTCTCAATCAAAAGCAAAAA

AGATAATTGAAACAATGAGTTCTCCAAAGTTATCAACGGTAGAAGTAAGTAAAGAAAATGTGTCCCAGCC  
 AAAAAAGCCAAACGGAAATTATACAGAAATGAAATTTTCATCTCCCATCAACATATCTGGCCAAGTGATT  
 TTAATGGAACAGAAAGTAAAGAAACTGATCATCAGATTCTCAAACGACGGCTTCGAACACGCACAGCCA  
 AA

ACGCGTACGCGGCGCTCGAG – GFP Tag – GTTTAA

**Protein Sequence:**

>MG217235 representing NM\_183046  
 Red=Cloning site Green=Tags(s)

MESHLNPDGVPSPSYVFSADPIARPLEINFDGVKLDLSHEFSLVASNPAANSLGSKNYLQVCLRIRPFTQ  
 SEKEHEAEGCVQLDSQSVLLKDPQSILGHLSEKSSGQVAQKFSKVFSGPETSQKEFFLGIMQPVKDL  
 LEGHSRLIFTYGLTNSGKTYTFQGTENIGILPRTLNVLFDSLQERLYTKMSFKPHRCREYKLSDDQEK  
 EESANKNTLLRQIKEVTIHNSYDVLGHLTNSLTIPEFEESVNSCDQSSLNVDNIKYSVWVSFFFEIYNE  
 SIYDLFVPVSSKFQKRKMLRLSQDIKGYSFIKDLQWVQVSDSKEAYRLLKLGVKHQSVAFTKLNNASSRS  
 HSIFTIRILQIEDSEIPRVTRVSELSLCLAGSERSMKTQNEGERLREAGNINTSLLTLGKICINVLKNS  
 KSKVQHVFPRESKLTHTYQSFFTGKGIKMIINISQSCSAYDELNVLFSTTAQRVYVPTLSSSQEKS  
 FASNKSLQDVSLSNLDNKILNVKRTVSWENSLEDVLENEDELVEDLEENETQNMETELTDESDKSLE  
 ECRVSTCHKKNKELLDLIEKLNKRLINENKEKLTLELKIREEVTQEFQYWSQREADFKETLLHEREILE  
 ENAERRLAIFKDLVGKCSQDEPTNRICDIELETEEAHNYVGVEDIFHSLQDDVTDIKKQAEHLAHLYITS  
 LVDPQEAIAQLKFNQVKAELAEKELIKAEELKNRESNSLVQALKTSSKVDTSLSNKSCTCNETSE  
 MPKNSRAQTHSERKRLNEDGLQLGEPKAKGLILVSPPIITEEQNKMGEMQQSVSEVVEGNRVLKEKNEEL  
 KRLLTIGENELRNEKEEKAELENKQVVSLLQQQLRFEEKNSSLRADVEQIQASYNASVAELQTQKAVNQEQ  
 RDRILKLSQEMETAARSIESNVSIKQMQTKIDELRSLDPSHISKIDLLNLQDLSSGAKGDNCLNTSQQ  
 LPGGDFSSTWVKEYHTQEISRENSFHASIEAIWEECKEIVKASSKSHQIQGLEEQIEKLQVEVKGYREE  
 NSDLRAQESQGNRDHQLKEKESLIQQLREELQEKSVSLRVQVQLVAEREQALSELSDVTCYKAKIKDL  
 EVIVETQKDECKRLVELEQSILEKESAILKLEANLKECEAKHQDHIRTNDLSAKEVVFREEVTRLANNLH  
 DTKQLLSKEEENEISRQETEKLEELAANSILTQNLKADLQKKEEDCAELKEKFIDAKKQIEQVQREVS  
 VMRDEEKLLRIKINELEKKNQYSQDLDMKQRTIQQLKEQLSNQKMEEAQQYKQVCKDLVKEKLVEDM  
 RLTLVEQEQTAEQDRVLEAKSEEADWLATELDKWKKEFKDLETRSNQRLNTGTMDDLVDLTKFSLQD  
 ELQESEEKYKADRKKWLEEKAVLTTQAKEAENVRNREMRKYADDRERCLKLQNEVETLTAQLAEKNSLQ  
 KWREERDQLVAVETQMKALLSSCKHKDEEIQELRKAANKSTGTENQTMNPKPEYNDSDVLDGGVETEPQS  
 TSLEISRNTAEDGSVVLDSCEVSTENVQSTRFPKPELEIQFTPLQPNKMAVKHPGCPTPVTIKIPKARKR  
 KSGEVEEDLVKCNKKNSTPRSNVFPVSEHRNSPVKKEQKVSVPSSKKTYSLSRQASTVSANIASKKR  
 EGTLQKFGDFLQHSPTILQSKAKKIETMSSPKLSTVEVSKENVSQPKAKRKLRYRNEISSPINISGQVI  
 LMEQVKETDHQILKRRLRTRTAK

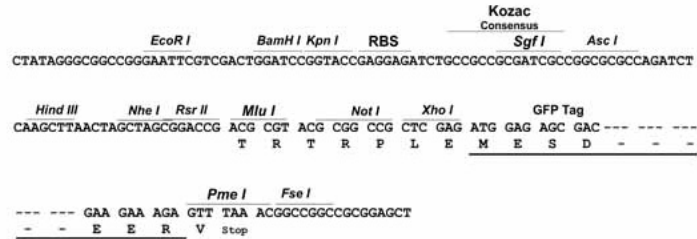
TRTRPLE – GFP Tag – V

**Restriction Sites:**

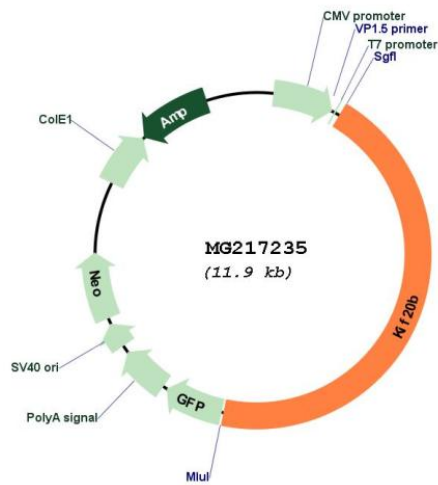
Sgfl-Mlul

Cloning Scheme:

Cloning sites used for ORF Shutting:



Plasmid Map:



<b>ACCN:</b>	NM_183046
<b>ORF Size:</b>	5322 bp
<b>OTI Disclaimer:</b>	The molecular sequence of this clone aligns with the gene accession number as a point of reference only. However, individual transcript sequences of the same gene can differ through naturally occurring variations (e.g. polymorphisms), each with its own valid existence. This clone is substantially in agreement with the reference, but a complete review of all prevailing variants is recommended prior to use. <a href="#">More info</a>
<b>OTI Annotation:</b>	This clone was engineered to express the complete ORF with an expression tag. Expression varies depending on the nature of the gene.
<b>Components:</b>	The ORF clone is ion-exchange column purified and shipped in a 2D barcoded Matrix tube containing 10ug of transfection-ready, dried plasmid DNA (reconstitute with 100 ul of water).
<b>Reconstitution Method:</b>	<ol style="list-style-type: none"><li>1. Centrifuge at 5,000xg for 5min.</li><li>2. Carefully open the tube and add 100ul of sterile water to dissolve the DNA.</li><li>3. Close the tube and incubate for 10 minutes at room temperature.</li><li>4. Briefly vortex the tube and then do a quick spin (less than 5000xg) to concentrate the liquid at the bottom.</li><li>5. Store the suspended plasmid at -20°C. The DNA is stable for at least one year from date of shipping when stored at -20°C.</li></ol>
<b>RefSeq:</b>	<a href="#">NM_183046.2</a>
<b>RefSeq Size:</b>	5563 bp
<b>RefSeq ORF:</b>	5325 bp
<b>Locus ID:</b>	240641
<b>UniProt ID:</b>	<a href="#">Q80WE4</a>
<b>Cytogenetics:</b>	19 C1
<b>Gene Summary:</b>	Plus-end-directed motor enzyme that is required for completion of cytokinesis (By similarity). Required for proper midbody organization and abscission in polarized cortical stem cells (PubMed:24173802). Plays a role in the regulation of neuronal polarization by mediating the transport of specific cargos. Participates in the mobilization of SHTN1 and in the accumulation of PIP3 in the growth cone of primary hippocampal neurons in a tubulin and actin-dependent manner (PubMed:23864681). In the developing telencephalon, cooperates with SHTN1 to promote both the transition from the multipolar to the bipolar stage and the radial migration of cortical neurons from the ventricular zone toward the superficial layer of the neocortex (PubMed:23864681). Involved in cerebral cortex growth (PubMed:24173802). Acts as an oncogene for promoting bladder cancer cells proliferation, apoptosis inhibition and carcinogenic progression (By similarity).[UniProtKB/Swiss-Prot Function]