

Product datasheet for **MG217234**

Snx10 (NM_001127348) Mouse Tagged ORF Clone

Product data:

Product Type: Expression Plasmids
Product Name: Snx10 (NM_001127348) Mouse Tagged ORF Clone
Tag: TurboGFP
Symbol: Snx10
Synonyms: 2410004M09Rik
Mammalian Cell Selection: Neomycin
Vector: pCMV6-AC-GFP (PS100010)
E. coli Selection: Ampicillin (100 ug/mL)
ORF Nucleotide Sequence: >MG217234 representing NM_001127348
Red=Cloning site Blue=ORF Green=Tags(s)

TTTTGTAATACGACTCACTATAGGGCGGCCGGAATTCGTCGACTGGATCCGGTACCGAGGAGATCTGCC
GCC**CGATCGCC**

ATGTTCCAGAACAGCAGAAAGAGGAGTTCGTGAGTGTCTGGTCCGGGACCCAGGATTCAGAAGGAGG
ACTTTGGCACTTTATATCGACTATGAGATCTGCATTACACAAATAGCATGTGTTTTACAATGAAAAC
ATCTTGTGTACGAAGAAGGTATAGAGAGTTCGTGTGGCTGAGGCAAGACTCCAAAGCAACGCGTTGCTG
GTACAATTACCAGAACTCCGTCTAAAAACCTGTTTTTCAACATGAACAATCGCCAGCATGTCGACCAAC
GCCGCCAGGGCTTGAAGATTTCTCAGAAAAGTCTGCAGAATGCACTTTGCTTTCCGATAGCAGCCT
CCACCTTCTCAGAGCCATCTGAAGTCCGAGGACATTGAAGCATGTGTTTCTGGGCAGACCAAGTAC
TCGGTGAAGAAGCCATTACAAGTTTGTCTTAATGAATAGACGGTTTCCGAAGAAGAAGAAGGGA
AGAAAGACGCCGACGTAGAGTATGATTCAGAAAGTTTCATCCTCTGGGCTTGGACACAGTAGTGATGACAG
CAGTTCTCATGGATGTAAAACGAGCCAGCTCTGCAGGAGTCC

AG**CGGACCG**ACGCGTACGCGGCCGCTCGAG - GFP Tag - GTTTAA

Protein Sequence: >MG217234 representing NM_001127348
Red=Cloning site Green=Tags(s)

MFPEQQKEEFVSVVWRDPRIQKEDFWHSYIDYEICIHNTSMCFTMKTSCVRRRYREFVWLRQRLQSNALL
VQLPELPSKNLFFNMNRRQHVDQRRQGLEDFLRKVLQNALLLSDSSLHLFLQSHLNSIEDIEACVSGQTKY
SVEEAIHKFALMNRFPFFFFFFEGKKDADVEYDSESSSSGLGHSSDDSSSHGCKTSPALQES

SGP**TRRRLE** - GFP Tag - V

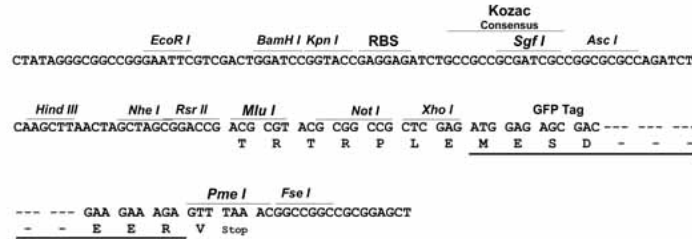
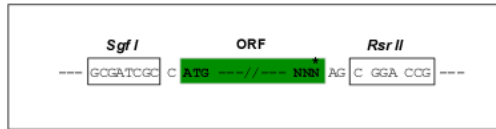
Restriction Sites: Sgfl-RsrII



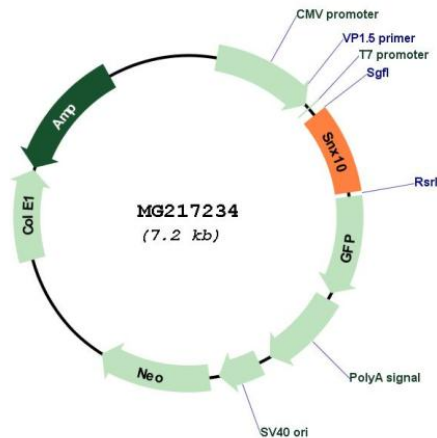
[View online »](#)

Cloning Scheme:

Cloning sites used for ORF Shuttling:



Plasmid Map:



ACCN: NM_001127348

ORF Size: 603 bp

OTI Disclaimer: The molecular sequence of this clone aligns with the gene accession number as a point of reference only. However, individual transcript sequences of the same gene can differ through naturally occurring variations (e.g. polymorphisms), each with its own valid existence. This clone is substantially in agreement with the reference, but a complete review of all prevailing variants is recommended prior to use. [More info](#)

OTI Annotation: This clone was engineered to express the complete ORF with an expression tag. Expression varies depending on the nature of the gene.

Components: The ORF clone is ion-exchange column purified and shipped in a 2D barcoded Matrix tube containing 10ug of transfection-ready, dried plasmid DNA (reconstitute with 100 ul of water).

Reconstitution Method:

1. Centrifuge at 5,000xg for 5min.
2. Carefully open the tube and add 100ul of sterile water to dissolve the DNA.
3. Close the tube and incubate for 10 minutes at room temperature.
4. Briefly vortex the tube and then do a quick spin (less than 5000xg) to concentrate the liquid at the bottom.
5. Store the suspended plasmid at -20°C. The DNA is stable for at least one year from date of shipping when stored at -20°C.

RefSeq: [NM_001127348.1](#), [NP_001120820.1](#)

RefSeq Size: 2464 bp

RefSeq ORF: 606 bp

Locus ID: 71982

UniProt ID: [Q9CWT3](#)

Cytogenetics: 6 B3

Gene Summary: Probable phosphoinositide-binding protein involved in protein sorting and membrane trafficking in endosomes. Plays a role in cilium biogenesis through regulation of the transport and the localization of proteins to the cilium. Required for the localization to the cilium of V-ATPase subunit ATP6V1D and ATP6V0D1, and RAB8A. Involved in osteoclast differentiation and therefore bone resorption.[UniProtKB/Swiss-Prot Function]