

## Product datasheet for **MG217202**

### Stk31 (NM\_029916) Mouse Tagged ORF Clone

#### Product data:

Product Type:	Expression Plasmids
Product Name:	Stk31 (NM_029916) Mouse Tagged ORF Clone
Tag:	TurboGFP
Symbol:	Stk31
Synonyms:	C330007K24Rik
Mammalian Cell Selection:	Neomycin
Vector:	pCMV6-AC-GFP (PS100010)
E. coli Selection:	Ampicillin (100 ug/mL)
ORF Nucleotide Sequence:	>MG217202 representing NM_029916 Red=Cloning site Blue=ORF Green=Tags(s)

TTTTGTAATACGACTCACTATAGGGCGGCCGGAATTCGTCGACTGGATCCGGTACCGAGGAGATCTGCC  
GCC**CGATCGCC**

ATGTGGGGCCAGCGGCTCTTTGCTGGGACGGCTGTGGCGCAAAGTGAAGTTTTCCAGGACTTGTCCAAA  
TGGATGAAGATACACATTACAATAAAGTTGAAGATGTTGTTGGAAGTCATGTAGAAGATGCAGTAACATT  
TTGGGCCAGAAATGTCAGTAAAAATAAGGATATTATGAAGATTGGTTGTTCACTCTCAGAAGTTTGTCT  
CTTGCTAATTCAGTTTTTGGCAATCTTGATCCTAAGAAGATTTATGGTGGATTGTTTTCTGAAGATAAGT  
GCTGGTACAGATGCAAAGTGCTAAAACTATCAGCGATGATAAGTGCCTGGTGGGTACATTGACTATGG  
AAATACTGAAATCTAAACCGATCTGATATAGTAGAAATTCCTCCGGAGCTACAATTTCTAGTATTGCC  
AAGAAGTATAGACTTTGGGGACTACAGATTCCTTCTGGCCAAGAAGTTACCCAGTTTGATCAGGGTAGAA  
CATTTTTGGGGAGTTTGATTTTTGAAAAAGAAATTAATGAGAAATAAAGCAACATATCAAGATGGAAC  
AGTTATTGCTCAGGCTGAGTATGGCACTGTGATATAGGGGAAGAAGTGGCAAAGAAAGGATTTGCAGAA  
AAGTGCAGACTGACCTCAGGCATTGATGCCTGTGAGGCAAGAAACCTGATCCTAATCAGCTTGCTCTCA  
GGAGTCTCAAGAACCCTATCCCCTGTGGGGCGCAGATCAAACAGTCAACCTCAGCAGGCCAAAGGG  
GCATTTAAACGGGAGGCTGACTCTTGATGTGAAGTATGAGACCAGTGCAGGCAATCACGTGACATTTCCA  
AAGGAAAGTTTGGCTGCTGGTACTTTAATTTAGGGTCTAATGTCAGCTTGGCAAAAATTAACAGGACC  
AGAACTTATTGAAGAGAATGAAAAGCTTAAACAGAGAAAGAGGTTCTTCTAGAAAATTACAAAGCATT  
AGAATTAAGGTTGAGCAGACTGCCAGGAGCTGCAGCAAGAGAAAACAGCTACCATGGATCTGACTAAG  
CATTTAGAAAGCACTCTGAAGACGTGTGTAGGAACCAGGCTGAAGAATTTGGCAGCTAAAGTAGAATAT  
TGAAAGAAATTAGGCATATTAACATCAGTATTCGCTTTGGAAATGACCTTTCAGATGCTATGCAAGTGTT  
GGATGAAGGGTCTTTACTACTTAGCATCTTTGAATGAGTTAGAGAAAATTTGGGCTGAATATAATGTT  
GCTCAGGAGAAGATCCAACTTGTCTTAATGAGAATGAAGGTAATTTTTGATTGCTGAAAGAAATGAAG  
TACAACAGAAGCTGTTTCGTGGCTGTAGATGTTTTATTCTGGAAGTAGATGACTTACCCTTGATAAACG  
CTTAAAAACATTGCAGGACTTAGCAACTCTTTAGAATCAGTGTATGAAAGGCCAAAGAAGGAATAAT



[View online »](#)

AACTCTGAAGAAACACTTAGAAAAGTTTTTGGACTGGCAGTGTACCAAAGAGAAGAGTTCGCCAGTATTA  
 GGAGTGAAACAGAGGCATCTCTGCAGCACCTTGTGGCATGGTTCAGAGCAGCCAGAAGGTTTTTATGATCT  
 GTCCTTGGATGAACCATGACTTCAGAAGACCTGATTGGTAATATTGACGAAATCTAGAGAAGACTGAG  
 TCATGTGTCTGCAAAGAGCTAGAGCTGTCTCATTGAGCAAGGTGTATAGACAAGGAGATTATTTTAA  
 TTACATACAGTCAAGTGTGCAAAGATCCATTCTGAGGAAAAGTTCATTGCCACCTTGTGTCCAAGTA  
 TAAGGACAGTGTGAGTTTAAAAAGCAGATGATTGACTGTTTAAATAAGAACCCCAATGTGGATTACTTG  
 CTTTCTATTAAGAAGACATTGAAAGGCTTAAAAGCACAACCTGAGATGGAATGGTTGAGAAGAGTAATT  
 TGGAAGAATCTGATGACCATGATGGAAGTAAATGAGAAAATAAGCAAGAAATAACTCAATTGCGAAA  
 TAGTGTTCAGGAAATTTATCATGAGAGGGAGGAATATGAGAAGCTGAATAGCTTGACCCAGAAATGG  
 TTCCCTGAGCTGCCTCTGCTGTATCCTGAAATAGGATTGCTTAAATATATGAATTCTGGTGGTCTTCTTA  
 CTATGAGCTTAGAGCGGGACCTTCTTGACACTGAGCCATGAAGGAACTAGCAGCAAGCGTCTCTGGT  
 GTGCTCCGAGGTTAATGGGCAGCCAGTTCTCTTAAAGGGCTATCCGTGGATGTTGACACAGAAGGCAGG  
 GTGATTACAGAGCAGCCTTACCATAGAGCTTGTGGATATGCTAAAGAAGAGTCTGGGTTACTGCCAT  
 TAATATTCTGTTTTGTGAAGTCTGATCCTGTTGCCTATCTGATGGTCCCATATTATCCTAAGGCAAA  
 CCTGAGTGCAGTCAAGCCAGTATGCCTTAACTTCAGAAGAAGCTTTAAAAGTCATGAAAGGTGTTGCC  
 CGAGGACTGCATACATTGCATAGTGCTAACATAATTCATGGATCACTTCATCAGAACAATGTATTGCGCT  
 TAAATCGTGAACAAGGGATTGTTGGAGATTATGACTTCACCAAATCTGAGAGCCAGCGAGCTTCAGTCAA  
 CGCGATGGTGGTGGATTGAGTTTGTCTCACCTGAATTGAAAACCTGAAAACCTCCTTCTGCAAGTTCA  
 GACTTATATGCTTATGGTTGCCTTTTCTTATGGCTTTCTGTTCAAATCAAGAGTTTGGAGACAAATGAAG  
 ATGGAATCCAAAAGTAGATCAGTTTCATTTGGATGATAATGTCAAGTCCCTCCTTTGTAGCTTGATATA  
 TTTTAGAAGTTCAATGACTGCTGAGCAGTTTTGAATGCTGAATGTTTCTTGCTTCCAAAGGGGAAATCA  
 GTTCCAATCCCAGAAAAGAGATTGAATGTACTCAGCATAGCAGAGAAGATGAATCAAAGATGGAGAGTC  
 TGGATAGATATAGTAAAAGACAAGAAATGGTGAAGCCAACCT

ACGCGTACGCGGCCGCTCGAG - GFP Tag - GTTTAA

**Protein Sequence:**

>MG217202 representing NM\_029916  
 Red=Cloning site Green=Tags(s)

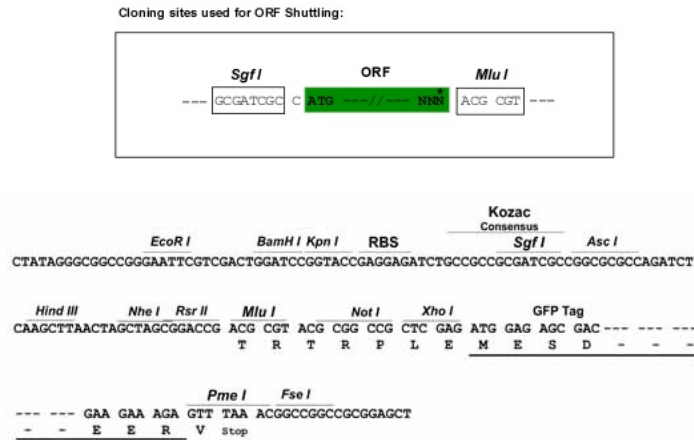
MWQQLR FAGTAVAQSVSFPGLVQMDETHYNKVEDVVGSHVEDAVTFWAQNVSKNKDIMKIGCSLSEVCP  
 LANSVFGNLDPKKIYGLFSEDKWYRCKVLKTISSDKCLVRYIDYGNTIELNRS DIVEIPPELQFSSIA  
 KKYRLWGLQIPSGQEVTFDQGRFLGSLIFEKEIKMRIKATYQDGTVIAQAEYGTVDIGEEVAKKGF AE  
 KCRLTSGIDACEAKKPDNPQLALRSLKNPIPLWGRRSNQSTFSRPKGHFNGRLTLDVKYETSAGNHVTFP  
 KESLAAGDFNLGSNVS LAKIKQDQKLEENEKLKTEKEV LLENYKALELKVETAQELQQEKTATMDLTK  
 HLESTLKC VGTRLKNLAAKVELLKEIRHINISIRFGNDLSDAMQVLEDEGSFTLASLNELEKIWA EYNV  
 AQEKIQTCLNENEGNILIAERNEVQKLFVAVDVFILEVDDLPLDKRLKTLQDLATSLESVYGKAKEG TN  
 NSEETLRKFFDWQCTKREEFASIRSETEASLQHLVAWFQSSQKVFDSLDEPLTSED LIGNIDEILEKTE  
 SCVCKELELSIEQVIDKEIILITYSQVLQKIHSEEF IATLLSKYKDSVEFKQMIDCLNKNPNVDYL  
 LSIKKTLKGLKAQLRWKLVEKSNLEESDDHDGTEIEKIKQEITQLRNSVFQEIYHEREEYELNSLTQKW  
 FPPELPLLYPEIGLLKYMNSGGLLTMSLERDLLDTEPMKELSSKRPLVCSEVNGQPVL LKGYSDVDTEGR  
 VIQRAASYHRACGYAKEESGLLPLIFLFLCKSDPVAYLMVPPYKANLSAVQASMP LTSEALKVMKGVA  
 RGLHTLHSANIIHGSLHQNNVFALNREQIVGDYDFTKSESQRASVNAMVGGLSLLSPELKTGKPPSASS  
 DLYAYGCLFLWLSVQNQEFETNEDGIPKVDQFHLD DNVKSLCLSIYFRSSMTAEQVLNAECFLLPKGKS  
 VPIPEKEIECTQHSREDESKMESLD RYSEKTRNGEANP

TRTRPLE - GFP Tag - V

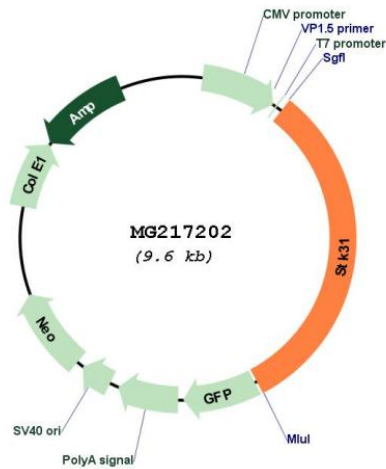
**Restriction Sites:**

Sgfl-MluI

Cloning Scheme:



Plasmid Map:



ACCN:

NM\_029916

ORF Size:

3054 bp

OTI Disclaimer:

The molecular sequence of this clone aligns with the gene accession number as a point of reference only. However, individual transcript sequences of the same gene can differ through naturally occurring variations (e.g. polymorphisms), each with its own valid existence. This clone is substantially in agreement with the reference, but a complete review of all prevailing variants is recommended prior to use. [More info](#)

<b>OTI Annotation:</b>	This clone was engineered to express the complete ORF with an expression tag. Expression varies depending on the nature of the gene.
<b>Components:</b>	The ORF clone is ion-exchange column purified and shipped in a 2D barcoded Matrix tube containing 10ug of transfection-ready, dried plasmid DNA (reconstitute with 100 ul of water).
<b>Reconstitution Method:</b>	<ol style="list-style-type: none"><li>1. Centrifuge at 5,000xg for 5min.</li><li>2. Carefully open the tube and add 100ul of sterile water to dissolve the DNA.</li><li>3. Close the tube and incubate for 10 minutes at room temperature.</li><li>4. Briefly vortex the tube and then do a quick spin (less than 5000xg) to concentrate the liquid at the bottom.</li><li>5. Store the suspended plasmid at -20°C. The DNA is stable for at least one year from date of shipping when stored at -20°C.</li></ol>
<b>RefSeq:</b>	<u><a href="#">NM_029916.1</a></u>
<b>RefSeq Size:</b>	3238 bp
<b>RefSeq ORF:</b>	3057 bp
<b>Locus ID:</b>	77485
<b>UniProt ID:</b>	<u><a href="#">Q99MW1</a></u>
<b>Cytogenetics:</b>	6 B2.3