

Product datasheet for **MG217196**

Insrr (NM_011832) Mouse Tagged ORF Clone

Product data:

Product Type:	Expression Plasmids
Product Name:	Insrr (NM_011832) Mouse Tagged ORF Clone
Tag:	TurboGFP
Symbol:	Insrr
Synonyms:	Irr
Mammalian Cell Selection:	Neomycin
Vector:	pCMV6-AC-GFP (PS100010)
E. coli Selection:	Ampicillin (100 ug/mL)
ORF Nucleotide Sequence:	>MG217196 representing NM_011832 Red=Cloning site Blue=ORF Green=Tags(s)

TTTTGTAATACGACTCACTATAGGGCGGCCGGAATTCGTCGACTGGATCCGGTACCGAGGAGATCTGCC
GCC**CGATCGCC**

ATGGCAGTGCCTGCTCTGTGGCCCTGGGGAGTACACTTGCTTATGAGCCTGCTGCTTGGGATCTGGCC
TGGACACACTAGAGGTGTGCCCCAGCCTGGATATCCGCTCGGAGGTGACCGAGCTCCGTCGGCTGGAGAA
CTGCAGTGTGGTGGAGGGTACCTGCAGATCCTTCTTATGTTTGTGCCACTGGAGAGGATTTCCGAGGC
CTCAGCTTTCCTCGCCTTACCCAGGTGACTGACTACCTGCTGTTGTTCCGAGTCTATGGCCTGGAGAGCC
TTCGAGACCTCTCCCCAACCTCACTGTGATCCGAGGCACCCGGCTCTTCTGGGCTACGCACTCATTAT
CTTTGAGATGCCCCACCTACGGGACGTCCGGCTGCCGTCGCTTGGGGCCGTGCTGCGTGGGGCCGTGCGT
GTGGAGAAGAACCAGAACTTTGCCATCTCTCCACCATTGACTGGGGTCTGCTGCAGCCTGCACCTGGTA
CCAACCACATTGTAGAAACAAGCTGGGCGAGGAGTGTGCAGACGTGTGCCCCGGTGTGCTGGGAGCTGC
TGGTGAGCCCTGTTCGAGAACCACTTCAGCGGGCGCACTGACTACAGGTGCTGGACGTCCAGCCACTGT
CAGAAAGTGTGTCCTGCCCCGAGGGATGGCCTGCACAGCAGCGGTGATTGCTGCCACAGTGAAGTGC
TGGGGGCTGCAGCCAGCCTGAAGACCTCGAGCCTGTAGCTTGCCGCCACCTCTACTCCAAGGAGT
CTGCCTCCGAGCCTGCCCTCCGGCACCTACCAATATGAGTCTGGCGCTGTGTACCCGCGGAGCTCTGC
GCTCATCTGCGTGAGGTTCCTGGACTTGGCACCACCTTCGGCATCTACGAGGGCAGCTGCCATAGCTCAGT
GCCCTCCAGGCTTCACCCGAATGGCAGCAGCATTTTCTGCCATAAGTGTGAGGGCCTGTGCCCCAAAGA
GTGCAAGTTGGGACAAAGACCATCGACTCTGTCCAAGCCACACAGGACCTGGTGGGCTGCACCCACGTG
GAGGAAACCTCATCCTCAACCTTCGCCAAGGCTACAATCTGGAGCCAGAGCTTCAACGCAACCTGGGTC
TGGTGGAGACCATCACTGGCTTCTCAAATCAAGCACTCTTTTGCACCTCGTGACCCTGGGCTTTTTCAA
GAACCTCAAACCTAATCCGGGGAGATTCCATGGTGGATGGGAATTACACTCTCTACGTATTGGACAACCG
AACCTGCAACAGTTGGGATCCTGGGTGACCGGGGGCTCACCATTCCCGTGGGCAAAATATACTTCGCT
TCAACCCACGCCCTGCTTGGAGCACATATACCAACTGGAGGAGGTGACGGGAACAGAGGTCCGCAGAG
CAAGGCTGAAATCAACCCCGGACCAATGGAGATCGGGCTGCCTGTCAGACTCGCACTCTACGTTTTGTG



[View online »](#)

TTCAACCTGACGGAGGAAGACCGCATCCTCCTGCGCTGGGAGCGCTATGAGCCACTGGAGGCCCGTGACC
TGCTCAGCTTCATTGTCTATTACAAGGAGTCCCCATTTGAGAATGCCACAGAACAGTGGGTCCAGATGC
CTGTGGAACCCAGAGCTGGAACCTGTTGGATGTGGAACACTCCCTCAGCCGACCCAGGAACCAGGGGTA
ACCCTGGCCCCCTTAAGCCCTGGACACAGTATGCTGTGTTTGTGCGGGCCATCACACTGACCACCGCTG
AGGACAGTCCCCATCAGGGAGCCAGAGCCCCATTGTCTACCTGCGAACATTGCCTGCTGCCACCCAGGT
GCCCAAGATGTCATCTCCACCTCCAACCTCCTCTCCACCTCCTGGTGCCTGGAAGCCACCGGTCCAG
CGCAATGGAAACATCACCTACTACCTGGTGTGTCGCGAGCGCTGGCGGAGGACGGTGACCTCTACATCA
ATGACTACTGCCACCGCGTCTGCGGCTGCCACCCAGCAGCCACGACACACGCTTCGACCGTGAAGACCC
GGCGCTGGAGGCTGAGCCGGAACAAGGCTGCTGTCTTGCCAACACTCACCTCCTGGGCAGGCCCTGCCT
GCACTGGAGGCTCAAGAGGTACCTTCCAGAAAAATTTGAAAATTCCTACACCATGCCATCACCATCC
CCAAGGCTCCATGGAAAGTGACATCCATCAACAAGAACCCCAAGGGATTTCGGAGAGGCACCCGAGGGA
AGCTGGACTTCTCAGACTAGGAAAAACAACCTCGGATTTTGGATTCAAGAGGACAAGGTTCCCGGGAG
CGAGCGATATTGAGCGGCTTACGGCACTTACAGAGTACAGGATTGACATCCATGCCTGCAACCACGCTG
CGCACACTGTGGCTGCAGCGCCGCCACCTTCGTCTTTGCACGCACCATGCCACATAGAGAGGCCGATGG
CATCCCGGGAAAGTGGCTGGAAGGCAGCTGGCAAGAGCAGTGTACCTTGATTGGCTTGAACCACCT
GACCCCAATGGGCTCATTCTCAAGTATGAAATCAAGTACCGACGCTCTGGGAGAGGAGGCCACAGTGCCTT
GTGTGTCCCGTCTTCGATATGCCAAAGTCGGTGGAGTCCACCTGGCTCTGCTGCCCCCTGAAAACACTC
TGCTAAAGTTCGGGCCACCTCGTTGGCTGGCAATGGTTCTGACTGACGGTGTACCTTACATCACC
GATCTAGAGGAAGAGGATACCGGGGGATGCGCATCTTCTCACTGTACCCCTGTGGGGTTCATGCTGC
TCGTGACACTTGTGCTCCCTCGTCTTCTACAGCAGAAAGAGAAAACAGCAGCTGTACACATCCGTGAA
CCCCGAGTATTTAGTGCATCCACATGTATGTCCCCGACGAGTGGGAGGTGCCTCGGGAGCAGATAGCC
ATCATCCGGGAGCTGGGCAAGGCTCTTTGGGATGGTCTATGAGGGACTGGCCGAGGACTTGAGGCTG
GAGAGGAGTCCAGCCTGTAGCCCTGAAGACAGTTAATGAGTGGCCAGCGCTCGGGAACGCGTTGAATT
CCTCAAGGAAGCATCTGTATGAAGCATTCAAGTGTACCATGTGGTTGCTCTCCTGGGTGGTGTCT
CAGGGCCAGCCTACTGGTATCATGGAGTTAATGACCCGTGGGGACCTCAAGGCCATCTCCGATCTC
TGAGACCTGAGGCAGAGAACAACCCCGCCTCCCGCAGCCTGCACTCAGTGACATGATTGAGATGGCAGG
GGAAATTGCAGATGGCATGGCTACCTTGTGCAAGAAGTTTGTGACCCGGGACCTGGCGGCCCGCAAC
TGCATGGTGTCCAGGATTTACAGTCAAAATGGTGACTTTGGAATGACTCGGGATGTGTATGAGACAG
ACTATTACCGCAAGGGTGGAAAAGGTTACTGCCAGTGCCTGGATGGCCCCGAGTCCCTCAAAGATGG
AATCTTACCACCTCACTCAGATGTCTGGTCTTCGGTGTGGTGTCTGGGAGATTGTGACCTGGCCGAA
CAACCATACCAGGTCTATCAAATGAGCAGGTGCTGAAATTTGTCATGGATGGTGGATTCTAGAGGAGC
TGGAGAACTGTCCGATTCAGCTACAAGAGCTGATGAGACTCTGCTGGCAGCATAGTCCACGCTGCGCCC
GACTTTCTGTCACATCCTGGATCGCATACAGGATGAGCTTCGGCCCTCTTCCGGCTGTGCTCCTCTAC
TACAGCCCAGAGTGCCAGCGGGTCAAGGCTCCTTGTGCTACTGAGGCAGAACCTGATCCCCACCAA
CCTTAAATGGAGCTTCAGACTATAGTGCCCAAAATGGGGGCCAGGACAC

AGCGGACCGACGCGTACGCGGCCGCTCGAG - GFP Tag - GTTTAA

Protein Sequence: >MG217196 representing NM_011832
 Red=Cloning site Green=Tags(s)

MAVPALWPWGVHLLMSLLSLGSLDTEVCPSLDIRSEVTELRRELENCVVVEGHLQILLMFAATGEDFRG
 LSFPRLTQVTDYLLFRVYGLLESLRDLFPNLTVIRGTRFLGYALIIFEMPHLRDVLPSLGAVLRGAVR
 VEKNQELCHLSTIDWGLLQPAPGTNHIIVGNKLGEECADVCPVLAAGAEPCSRRTTFSGRDTYRCWTS
 QKVCPCPRGMACTAGDCCHSECLGGCSQPEDPRACVACRHLVFQGVCLRACPPGTYYQYESWRCVTAELC
 AHLREVPLGATTFGIYEGSCLAQCPPGFTRNGSSIFCHKCEGLCPKECKVGTKTIDSVQATQDLVGCTHV
 EGNLILNLRQGYNLEPELQORNGLVETITGFLKIKHSFALVTLGFFKNLKLIRGDSMVDGNYTYLVLDNQ
 NLQQLGSWVTAGLTIPVGKIYFAFNPRLCLEHIYQLEEVGTGRGRQSKAEINPRTNGDRAACQTRTLRFV
 FNLTEEDRILLRWERYEPEARLLSFIVYKESPFQNA TEHVGPDACGTQSWNLLDVELPLSRTQEPGV
 TLAPLKPWTQYAVFVRAITLTTAEDSPHQGAQSPIVYLRLTAPAPTVPQDVI STSNSSHLLVRWKPPVQ
 RNGNITYYLVWQRLAEDGDLYINDYCHRLRLPTSSHDFRFDREDPALAEPEQGCCPCQHSPGQALP
 ALEAEQVTFQKKFENFLHHAITIPKAPWKVTSINKNPQRDSEHRREAGLLRLGKNSDFEIQEDKVPRE
 RAILSGLRHFTEYRIDIHACNHAHTVGC SAATVFVARTMPHREADGIPGKVAWKAAGKSSVTLHWLEPP
 DPNGLILKYEIKYRRLGEEATVLCVSRLRYAKVGGVHLALLPPGNYSAKVRATSLAGNGSWTDGVTFYIT
 DLEEDTGGMRIFLTVTPVGFMLLVTLAALGFFYSRKRNSTLYTSVNPEYFSASHMYVPDEWEVPREQIA
 IIRELQGQSGFMVYEGLEARGLEAGEESTPVALKTVNELASARERVEFLKEASVMKAFKCHHVRLGQVVS
 QGQPTLVIMELMTRGDLKSHLRLRPEAENNPGLPQALSDMIQ MAGEIADGMAYLAAKFVHRDLAARN
 CMVSQDFTVKIGDFGMTRDVYETDYRKGKGLLPVRWMAPESLKDGIFTTSDVWSFGVVLWEIVTLAE
 QPYQGLSNEQVLKFMVMDGGVLEEL ENCIQLQELMRLCQWHPRLRPTFVHILDRIQDEL RPSFRLCSFY
 YSPECRQGLASLLPTEAEPD SPPTLNGASDYSAPNGGPGH

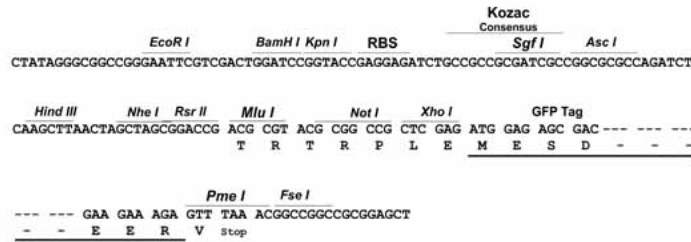
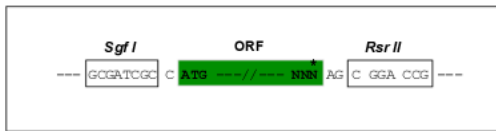
SGPTRRRLE - GFP Tag - V

Restriction Sites:

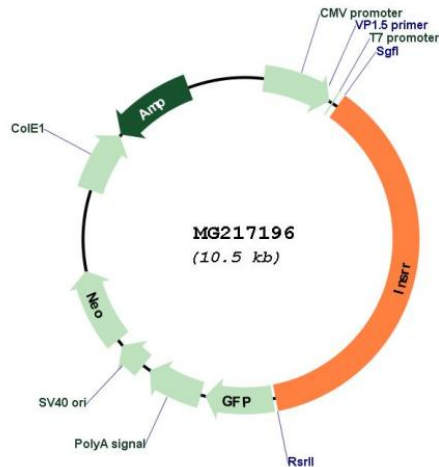
SgfI-RsrII

Cloning Scheme:

Cloning sites used for ORF Shuttling:



Plasmid Map:



ACCN: NM_011832

ORF Size: 3900 bp

OTI Disclaimer: The molecular sequence of this clone aligns with the gene accession number as a point of reference only. However, individual transcript sequences of the same gene can differ through naturally occurring variations (e.g. polymorphisms), each with its own valid existence. This clone is substantially in agreement with the reference, but a complete review of all prevailing variants is recommended prior to use. [More info](#)

OTI Annotation: This clone was engineered to express the complete ORF with an expression tag. Expression varies depending on the nature of the gene.

Components: The ORF clone is ion-exchange column purified and shipped in a 2D barcoded Matrix tube containing 10ug of transfection-ready, dried plasmid DNA (reconstitute with 100 ul of water).

Reconstitution Method:

1. Centrifuge at 5,000xg for 5min.
2. Carefully open the tube and add 100ul of sterile water to dissolve the DNA.
3. Close the tube and incubate for 10 minutes at room temperature.
4. Briefly vortex the tube and then do a quick spin (less than 5000xg) to concentrate the liquid at the bottom.
5. Store the suspended plasmid at -20°C. The DNA is stable for at least one year from date of shipping when stored at -20°C.

RefSeq: [NM_011832.2](#), [NP_035962.2](#)

RefSeq Size: 5102 bp

RefSeq ORF: 3903 bp

Locus ID: 23920

UniProt ID: [Q9WTL4](#)

Cytogenetics: 3 38.7 cM

Gene Summary:

Receptor with tyrosine-protein kinase activity. Functions as a pH sensing receptor which is activated by increased extracellular pH. Activates an intracellular signaling pathway that involves IRS1 and AKT1/PKB.[UniProtKB/Swiss-Prot Function]