

Product datasheet for **MG217187**

Pdxdc1 (NM_001039533) Mouse Tagged ORF Clone

Product data:

Product Type:	Expression Plasmids
Product Name:	Pdxdc1 (NM_001039533) Mouse Tagged ORF Clone
Tag:	TurboGFP
Symbol:	Pdxdc1
Synonyms:	2210010A19Rik; AA415817; Kiaa0251-hp
Mammalian Cell Selection:	Neomycin
Vector:	pCMV6-AC-GFP (PS100010)
E. coli Selection:	Ampicillin (100 ug/mL)



[View online »](#)

ORF Nucleotide Sequence:

>MG217187 representing NM_001039533
 Red=Cloning site Blue=ORF Green=Tags(s)

TTTTGTAATACGACTCACTATAGGGCGGCCGGGAATTCGTGCGACTGGATCCGGTACCGAGGAGATCTGCC
 GCC**GCGATCGCC**

ATGGACGCGTCCCTGGAGAAGATAGCAGACCCTACATTAGCTGAAATGGGAAAAAATTGAAAGAGGCGA
 TCGCGATGCTGGAGAAGAGCCCGAGAAGAACAGAGGAGGAAAATGGAAAGAAGCCAGTATCTGAGGATAT
 TCCAGGGCCACTCCAAGGCAGTGGACAAGATATGGTGAGCATCCTCCAGTTAGTTCAAAATCTGATGCAT
 GGAGATGAAGATGAGGAGCCCCAGAGCACCCGAATCCAAAATATTGGAGAGCAAGGTCACATGGCTTTGT
 TGGGTCATAGCCTCGGTGCCTATATTTCAACTCTGGATAAAGAGAAGCTGAGAAAGCTCACAAACCAGGAT
 ACTTTTCAGACACTACCTTATGGCTACGCCGATTTTCAGGTACGAAAATGGATGTGCATATTTCCACGAG
 GAAGAGAGGGAAGGACTTGCTAAGATCTGTAGGCTTGCCATTCTTCGCTATGAAGACTTTGTTGTAG
 ATGGATTCAACGTGTTATATAACAAAAAGCCTGCATATATCTTAGTGCTGCCGTAGACCTGGCCTGGG
 CCAATACCTTTGTAATCAGCTTGGCTTACCCTTCCCCTGCCTGTGCCGTGTGCCCTGTAACACTATGTTT
 GGATCCCAGCATCAGATGGACGTTGCCTTTCTCGAGAAACTGATCAAAGATGACGTAGAAAGAGGGAAGAC
 TGCCCTTGCTGCTTGTGCAAAATGCTGGAAGTGCAGCAGTTGGACACACAGACAAGATTGGACGTTTGAA
 GAACTCTGTGAGCAGTACGGCATTGGCTTTCATGTGGAAGGTGTGAATCTGGCAACATTGGCTCTAGGT
 TATGTCTCCTCATCTGTGCTGGCTGCAACCAAGTGCATAGCATGACACTAACTCCTGGCCTATGGCTAG
 GTTTGCCAGCTGTTCTCGAGTGACACTCTACAAACATGACGATCCTGCCTTGACACTAGTTGCTGGTCT
 TACATCAAATAAGCCTGCAGACAACTCCGAGCCCTACCACTCTGGTTGTCTCTACAGTACTTGGGACTT
 GATGGCATTGTGGAGAGAATAAAGCATGCTTGTATCTGAGTCAACGGTTGCAAGAAAGTTGAAGAAAG
 TGGACCACATCAAATCTTGGTGAAGATGAGCTCAGTTCTCCAGTAGTGGTGTTCAGTTTTCAGGA
 ATTACCAGCCTCAGATTCAGCGTTTAAAGCTGTTCCCTGTATCCAACATAGCACCTGCAGCAGTTGGCCGG
 GAAAGACACTCCTGTGATGCACTGAACCCTGGTTGGGTGAACAGTTGAAACAGTTGGTGCCTCAGTGTG
 GCCTCACTGTCATAGACCTGGAGGTAGATGGCACATGTGTTTCGGTTTCAGCCCTCTGATGACAGCAGAAGG
 GTTAGGAACTCGAGGAGAGGATGTCGATCAGCTCATTACCTGCATCCAAAGCAAACCTACCAGTCCTGACC
 TGCACACTACAGCTTCGGGAAGAATTCAAGCAGGAGGTAGAGGGGACAGCAGGGCTCCTGTATGTTGATG
 ACCCCAACCTGGCCTGGAATCGGGGTTGTCAGGTATGAGCATGCGAATGATGATGACACCAGTTTGAATC
 TGATCCAGAGGGGAAAAAATACACACTGGACTTCTGAAAAAGTTAAATGAACTGGAATCTGACCTCACA
 TTTAAAAATAGGCCCTGAGTACAAAAGCATGAAGAGCTGCATTTACATTGGCATGGCAAGTATGATGTGG
 ACGTTTCTGAGCTAGTGGAGACCATTGCAGTACAGCCCGGAAATTGAGGAGAAGTCAAGGCTTCTAGA
 GAACATGACAGAAGTTGTTTCGGAAGGGAATTCAAGGAGGCACAGGTTACAGTACAGAAAGGCAAATGAGGAG
 CGGCTTCTGGAAGAGGGAGTGTTCGGGCAATCCCTGTAGTAGGATCCGTGCTGAATTTGGTTTTCTCCAG
 TCCAGGCTTACAGAAGGGAAGAAGTTTAACTTAACAGCAGGCTCTCTGGAGTCCACAGAATACACCTA
 TGTCCACAAAGTACAAGTACTGGGGTGACACCACCTCCCACACCCTAGGCACTCGAAGCAAACAGAGG
 CTTCCAGATGGGAACAGGGTGCAGAGACT

AG**CGGACCG**ACGCGTACGCGGCCGCTCGAG - GFP Tag - GTTTAA

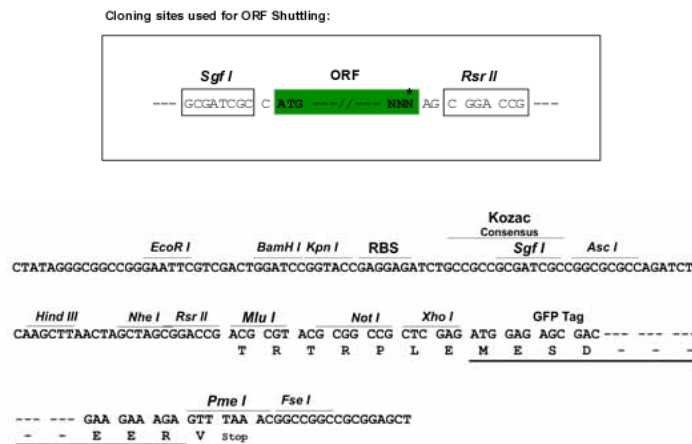
Protein Sequence: >MG217187 representing NM_001039533
Red=Cloning site Green=Tags(s)

```
MDASLEKIADPTLAEMGKNLKEAMRMLEKSPRRTTEEENGKPKVSEDI PGPLQSGQDMVSILQLVQNLMH
GDEDEEPQSTRIQNIQE QGHMALLGHSLGAYISTLDKEKLRKLTTRILSDTTLWLRRIFRYENGCA YFHE
EEREGLAKICRLAIHSRYEDFVVDGFNVLNKKPVIYLSAAARPGLGQYLCNQLGLPFPCLCRVPCNTMF
GSQHQM DVAFLKLIKDDVERGRPLLLVANAGTAAVGHDKIGRKLCEQYGIWLHVEGVNLATLALG
YVSSSVLAATKCD SMTLTPGLWGLPAVPAVTLYKHDDPALTLVAGLTSNKPADKLRALPLWLSLQYLGL
DGIVERIKHACHLSQRLQESLKKVDHIKILVEDELS SPVVVFRFFQELPASDSAFKAVPVSNIAPAVGR
ERHSCDALNRWLGELKQLVLPQCGLTVIDLEVDGTCVRF SPLMTAEGLTRGEDVDQLITCIQSKLPVLT
CTLQLREEFKQEVEGTAGLLYVDDPNWPGIGVVRYEHANDDTSLKSDPEGEKIHTGLLKKLNELES DLT
FKIGPEYKSMKSCIYIGMASDDVDVSELVETIAVTAREIEENSRLLENMTEVVRKGIQEAQVQLQKANE E
RLL EEGVLRQIPVVGSVLNWFS PVQASQKGRSFNLTAGSLESTEYTYVHKVQGTGVT PPTPLGTRSKQR
LPDGNQGAET
```

SGPTRRRLE - GFP Tag - V

Restriction Sites: SgfI-RsrII

Cloning Scheme:



ACCN: NM_001039533

ORF Size: 2130 bp

OTI Disclaimer: The molecular sequence of this clone aligns with the gene accession number as a point of reference only. However, individual transcript sequences of the same gene can differ through naturally occurring variations (e.g. polymorphisms), each with its own valid existence. This clone is substantially in agreement with the reference, but a complete review of all prevailing variants is recommended prior to use. [More info](#)

OTI Annotation: This clone was engineered to express the complete ORF with an expression tag. Expression varies depending on the nature of the gene.

Components: The ORF clone is ion-exchange column purified and shipped in a 2D barcoded Matrix tube containing 10ug of transfection-ready, dried plasmid DNA (reconstitute with 100 ul of water).

Reconstitution Method:

1. Centrifuge at 5,000xg for 5min.
2. Carefully open the tube and add 100ul of sterile water to dissolve the DNA.
3. Close the tube and incubate for 10 minutes at room temperature.
4. Briefly vortex the tube and then do a quick spin (less than 5000xg) to concentrate the liquid at the bottom.
5. Store the suspended plasmid at -20°C. The DNA is stable for at least one year from date of shipping when stored at -20°C.

RefSeq: [NM_001039533.2](#)

RefSeq Size: 3224 bp

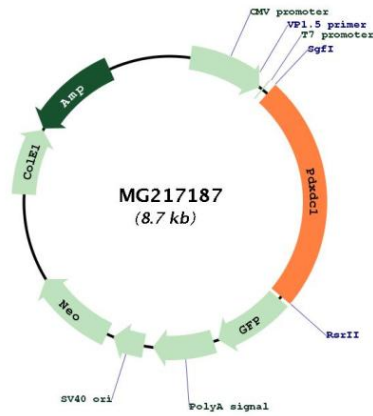
RefSeq ORF: 2133 bp

Locus ID: 94184

UniProt ID: [Q99K01](#)

Cytogenetics: 16 A1

Product images:



Circular map for MG217187