

Product datasheet for **MG217174**

Cas1 (NM_001159344) Mouse Tagged ORF Clone

Product data:

Product Type:	Expression Plasmids
Product Name:	Cas1 (NM_001159344) Mouse Tagged ORF Clone
Tag:	TurboGFP
Symbol:	Cas1
Synonyms:	2410019P08Rik; AV096627; BC040081; Cst; D4Ertd432e
Mammalian Cell Selection:	Neomycin
Vector:	pCMV6-AC-GFP (PS100010)
E. coli Selection:	Ampicillin (100 ug/mL)
ORF Nucleotide Sequence:	>MG217174 representing NM_001159344 Red=Cloning site Blue=ORF Green=Tags(s)

TTTTGTAATACGACTCACTATAGGGCGGCCGGAATTCGTCGACTGGATCCGGTACCGAGGAGATCTGCC
GCC**CGATCGCC**

ATGGATCTTGAACAGCTGAAAGCACCCGGTGCACCGACCCACCTGCAGGCAAGCCTCCAATGGCAGCCA
AGCGCAAAGGGCGCCTGAAGCTCAACGCCATCTGTGCCAAGCTCAGCCGACAGGTGGTCGTGAGAAAGGG
AGCAGAGGCCGGCTCCCAAGCCGAAGGTAGCCCACTACATCCCCGGGACAAAGAGCGCAGTGGCCCTGAG
TCTGGGGTGAAGCCGGCTCCCCAAGTGAAGAAGACAAGAGCGGGCAGTGATCGAGAAATGGGTCAATG
GAGAGTACTGTGAGGATCCCGCACCCACCCAGTGTGGGGCGTATTGCCCGTGATCAGGAGCTGCCCC
AGAGGGTGTCTACATGGTCCAGCCACAGGGCTGCAGTGACGAAGAAGACCATGCAGAAGAGCCCTCAAAA
GATAACAGTGTCTGGAGGAGAAGGAGTCAAGTGGTACGGCTTCTAAAGATGACAGCGGCCCCAGACCCA
GGCAGGCTTCAGGAGAAACCTCCTCTCTGAGGGACTACGCTGCTCCACCATGACCGAGTTCCTCGGCAT
GTTTGGCTACGATGACCAAGAACACAGGGATGAGCTGGCCAAGAAGATCAGCTTTGAGAAGCCGCATGCA
GGCTCCACCCCGAGGTGGCTGCCTCTTCCATGTTGCCCTCCTCTGAGGATACCTCAGCAAGCGGGCGC
GCTTCTCAAATACGAGGAATACATCCGTAAGCTCAAGCCGGCGAGCAACTCCCTGGCCAGCCACGG
GAGCAAAGCCGAGGACCGGGCAGGCAAGGAGGTGGTGGTCCCTTACCCAGCCTACGGCTGCCAGCAAC
ACGGCCACCTGGAAACCAAGGCCACCATCTGCCACTGCCATCACACAGCAGTGTCCAGATGCAGAATC
TGGTAGCTCGTGCTTCCAAGTATGACTTCTTCATCCACAAGTGAAGACAGGCGAGAACCTGAGGCCCA
GAATGGAAGCACTTACAAGAAGCCATCCAAGTATGACCTGGAGAATGTCAAGTACTTGCACCTCTTCAAA
CCCGGGGAAGGCAGCCCTGACATGGGCGGGGCCATCGCCTTCAAGACAGGCAAGGTGGGCGCCCCCTCTA
AGTACGACGTTCCGGGCATCCAGAAGCCAGGCCCTACCAAGATTCGCCCCGCCCCAGCCTGGTTCCTAC
ACCCCTCACCAATGTGCCAGTGTCCCAGCACCCCGGACCAGGACCGGAGCCACCTGCCTCCTGTGCC
TTCAACACTCCCGAGTACCTGAAGTCAACCTTTTCCAAAACAGACTCCATCACCACAGGAAGTGTCTCCA
CTGTCAAGAACGGATTGCCACAGATAAACCAGCTGTACCAGAAGATGTAACATTTACCAGAAATATAT
TGCCAGGTTCTCAGGAAGTCAGCACTGCGGTCACATCCACTGCGCCTACCAGTACCGTGAGCACTATCAC



TGCTGGACCCGGAGTGAACCTACCAGCGGTTACAAGCAAGCAGGATGTGATCCGACATTACAACATGC
 ACAAGAAGCGCGACAACCTCCCTGCAGCACGGCTTCATGCGCTTCAGCCCGCTGGACGACTGCAGTGTCTA
 CTACCACGGCTGCCACCTCAATGGGAAGAGCACCCTACCCTGCATGCAGGTGGGATGTAAACAAGGTA
 TACACAAGTACGTCGGATGTGATGACTCACGAGAACTCCACAAGAAGAACCCAGCTCATCAACGATG
 GCTTCCAGCGCTCCGAGCCACGGAGGACTGCGGCACAGCTGACTGTGAGTCTATGGACAGAAGACCAC
 ACACTTCCACTGCAGGCCCTGGCTGCACATTCACCTTCAAGAACAAGTGTGACATCGAGAAGCACAAG
 AGCTACCACATCAAGGATGATGCCTACGCCAAGGACGGCTTCAAGAAGTCTCAAAGTACGAGGAGTGCA
 AATACGAGGGCTGCATGTACAGCAAGGCCACCAACCTTCCACTGCATCCGCGCGGCTGCGGCTCAC
 CTTACCTCCACCAGCCAGATGACCTCACACAAGCGCAAGCACGAGCGGGCAGCATCCGGTCTCGGGG
 GCCCTGGGGCTGCCGGCCTCCCTGCTGGGCGCCAAAGCACGGAGCACGAGGAATCCAGCAACGATGACC
 TCGTGGACTTCTGCTGCCCTGAGCAGCAAGAAGTCCAGCCTGAGCGCCTCCCCACCAGCCAGCAATCGTC
 CGCATCCCTGGCCGCTGCGGCTGCCGCCACCCTGCTGAGGCCATCCCCAGTGCCACCAAGCCTCCCAAT
 AGCAAGATGGCAGGCTGCTGCCCCAGGGCCTGTCTGGTCCATCCCCTAGCACTGGCCCTCTCTAACT
 CAGGCCTGCCACCACACCCCTATTTCCCTGCTTCTAACCCTGGGAGCGCCTCATTGCTGTGGG
 ATCTCCAGGGCTCCTGGGCTCCATGTCTCTGGGGCCACAACCTCAGCAACCCCTGACATGCCGGCCCTG
 ATGGCTTCCAGAGCTGGAGACTCGGCCCCACGGCTGCCACCTCTCTCTGGTGGCCCTGCCTCCATCA
 TTGAGAGAATCTCTGCAAGCAAAGGCTCATCTCACCCATGATGGCTAGACTGGCTGCGGCCGCCCTCAA
 GCCCTCTGCCACCTTTGACCCAGGAAGTGGGCAGCAGCCACCCCAAGTTCACCCAGGCCAGGTG
 AAGCAGGAGCCTGACAGTGTGGCACCCAGGTCCCACGAGGCCTCCAAGACCGCAGTCTAGACCTGA
 CCGTGAAGGATCCAGTAATGAATCAAATGGCCACGCAGTCTCGGCAAATTCATCTCTTTATCCTCGCT
 TATGAATAAGATGTCTCAGGGCAACCCAGCCTCGAAAGTTCCTGAGCATCAAGACAGAAGCGGAGGGG
 AGCCCCGCGGGGAGCCCTCGCCTTTCTGGGCAAGCCGTGAAGGCACTAGTTCAAGAGAAGCTGTCCAG
 AGCCTTGAAGGTATCTCCGAGGTTGGTACCAAGGACTTCTGTGATGCCAGTGTGACTTCTCCCA
 CAAGGGCATTTCATTGTGTAGTGAGGAGTGGGCTGCGCTTTTCAGCACCTTGAGCGGAGCCATCAAA
 CATGCAAACCTTCACTTCCGACAGAGGGAGGAACAGCAAAAGGAACCCAGAGGCTTCTTCCCGACCT
 CTGCTGTGAGACCAAACCTCCCTTGGCACCTCGTCCCTGCCAGCACCTCCTGGCACCATGGTCTGCTGG
 ATCTTCTCTGGAGGGCCTGCTCCAGCCCGGTCTCTGTGCCCTCACCCCCACCCTGCTCGCTGGAAG
 CAGCTGGCTTCCACCATAACCCAGATGCCTCAGATTCCCTCCTCAGTGCCTCACCTGCCACCTCGCCCC
 TGGCGACGACGTCTAGAGAGCGCCAAGCCTCAGGTCAAACCCGGTTCCTCCAGTTCAGGACAACGA
 TCCATGCCTGGCAGGACTGCAAATACGCCAGCAAGTCCACTTCCACTGTCTCTCGGAACTGCAAG
 TACGTCTGCAAGACCTCGGGCAAGGCTGAGTCCCCTGCTTGGACCACATCAACCCAGCAACAGCCTGG
 TGAACGTGCGAGACCAGTTGCTTACTACTCTCTACAGTGCCTGTGTCCCAACCAGCACTGTGAGTCCG
 GATGCGTGGACACTACCACTGCCTCCGGACGGGCTGCTACTTTGTACCAACATCACCAACAACTTCCA
 TGGCATATAAAGAAGCATGAGAAGGCTGAACGACGGGCAGCCAACGGGTTCAAATACTTCAACAAGCGCG
 AGGAGTGCGAAGACTAGGCTGCAAGTACAACCAGGTGAACAGCCACTTCCACTGCATCCGGGAAGGTTG
 TCAGTTCTCCTTCTCCTCAAGCACCAGATGACCTCGCATGCCGGGAAGCACATGCGGAGGATGCTGGGG
 AAGAACTTTGACCGAGTCCCCCATCCAGGGTCCCCGAGCCTAATGGATGCCGAGACAGACGAGGGCA
 TGGACTATACAGGCTGTAGCCCTGGAGCGGCTCCTCAGAGTCTTCCACCATGGACCGTAGCTGTCCAG
 CACCCCTGTGGCAATGAGAGCACAGCTGCAGGGAACACCATCTCCATGCCGACAGCCTCGGGGCCAAA
 AAGCGCTTTTGGATCATCGAGGACATGTCTCCCTTTGGCAAGCGAAGGAAGACAGCCTCGTCTCGAAGA
 TGCTGGACGAGGCGATGATGCTGGAGGTTTCCGGCGCTTTGACCTCTATGAGGACTGCAAGGATACAGC
 CTGCCAGTTCTCACTCAAGGTCACCCACTACCACTGCACGCGGAAAACCTGCGGTACAAGTTTTGCGGA
 CGCACGCACATGTACAAGCACGCACAGCACACGACCGCGTGGACAACCTGGTGTGGACGACTTCAAGC
 GCTTCAAGGCTCCCTCAGTGCACCTTCGCCGACTGCCGTTCTCGGGCACCAGCACGCACTTCCACTG
 CCTGCGCTGCCGCTTCCGTTGCACAGACAGCACCAAGGCTACTGCGCACCGCAAGCACACGCAAGCAG
 GACGTGATCAGCGCCGCTGGCTTCTGCCAGTTCAGCTCGAGCGCCGACTGCGCAGTGCCGACTGCAAGT
 ACAAGCTCAAGTGTCTGCACTTCCACTGCACCTATCCGGGCTGTGCCACACAGTGGTGGGCATGTCCGA
 GATGGACTCGCACAAGCGCAAGCACGAGAAGCAGGAGCGAGGGGAGCCTCCCGCAGCCTCTCCGGGTGCG
 CCTGTCAACCTGGACGGCTCCCTCACGCTGGCCGCGGAGCAGGGCTCGCTGCTTCTCTGCAGACAGCGG
 CTGCGGGCCTAGGCTGCTCGGGGACACGGGGACCCCGGCCACCTGTCAACCGCTCCGGGACTCGGGA
 CGGCCCGCTGCGCCACCCCGCTGCCGCCACCACCACCACCACCACAGCCACAGCCACAGCC
 ACCGCTGGGGAGTCTCCAAGAGGACGACGAGGAGTGGAGTGGCGGAGGAGGCGGAGGACGACG

ACGAGGATGACGATGAAGAGGACGACGACGACGAGGATGATGATGATGATGACGACGACGAGGACCTGCC
 CACCGACTCGGAGGAGTCGTTGCCCGAGGCTGCGGGCGAGGCGGGCGCGCGGACCCCGCTGGCAGCCCTG
 GGTGGCCCCGGCCCTGCGCCACCGCCGCATCACCC

ACGCGTACGCGGGCCGCTCGAG – GFP Tag – GTTTAA

Protein Sequence:

>MG217174 representing NM_001159344
 Red=Cloning site Green=Tags(s)

MDLGTAESTRCTDPPAGKPPMAAKRKGLKLNIAICAKLSRQVVVEKGAEAGSQAEQSPLHPRDKERSGPE
 SGVSRAPRSEEDKRRRAVIEKWNGEYCEDPAPTIVLGRIRDQELPPEGVYMQPQGCSEEDHAEEPSK
 DNSVLEEKESDGTASKDDSGPSTRQASGETSSLRDYAASTMTEFLGMFGYDDQNRDELAKKISFEKPHA
 GSTPEVAASSMLPSSDITLTKRARRSKYEEYIRKLGKAGEQLPWPAGHKAEDRAGKEVVGPLPSLRPLSN
 TAHLKATILPLPSSSVQMQNLVARASKYDFFIHKLKTGENLRPQNGSTYKPKSKYDLENVYKYLHLFK
 PGEGLPDMGGAI AFKTKGVGRPSKYDVRGIQKPGPTKIPAPSLVPTPLTNVPSAPSTPGGPEPPASLS
 FNTPEYLKSTFSKTDSTITGTVSTVKNGLPTDKPAVTEDEVNIYQKYIARFSGSQHCGHIHCAYQYREHYH
 CLDPECNQYRFTSKQDVIRHYNMHHKRDNSLQHGFMRFSPLDCCSVYHGHCHLNGKSTHYHMCQVGCNKV
 YTSTSDVMTHENFHKNTQLINDGFQFRATEDCGTADCQFYGQKTHFHCRRPCTFTFKNKCDIEKHK
 SYHIKDDAYAKDGFKKFYKYECKYEGCMYSKATNHFHCIRAGCGFTFTSTSQMTSHKRKHERRHIRSSG
 ALGLPASLLGAKDTEHEESSNDLVDLSALSSKNSSLASPTSQSSASLAAAAAATTAEAIPSATKPPN
 SKMAGLLPQGLSGSIPLALALSNSGLPTTTPYFPLLPNRGSASLPVGSPLGSMSSGATTSATPDMPAL
 MASRAGDSAPTAATSLVPPASIIERISASKGLISPMARLAAAALKPSATFDPGSGQQTPTKFPQAQV
 KQEPDSAGTPGPHEASQDRSLDLTVKDPNESNGHAVSANSLLSSLMNKMSQGNPSLESFLSIKTEAEG
 SPAGEPSPFLGKAVKALVQEKLEPWKVYLRRFGTKDFCDAQCDFLHKAHFHCVVEECGALFSTLDGAIK
 HANFHFRTTEGGTAKGTPEASFPTSAEETKPLAPSSLPAPPGMTVAGSSLEGPAPSPVSPSTPTLLAWK
 QLASTIPQMPQIPSSVPHLPTSLATTSLESAKPQVKGFLQFQDNDPCLATDCKYASKFHFHCLFGNCK
 YVCKTSGKAESHCLDHINPSNSLVNVRDQFAYYSLQCLCPNQHCEFRMRGHYHCLRTGCYFVTNITTKLP
 WHIKKHEKAERRAANGFKYFTKREECGRLGCKYNQVNSHFHCIREGCQFSFLKHKQMTSHARKHMRRMLG
 KNFDRVPPSQPPSLMDAETDEGMDYTGCSPGAASSESTMDRSCSSTPVGNESATAAGNTISMPTASGAK
 KRFWIIEDMSPFGKRRKTASSRKMLDEGMMLGFRFRFDLYEDCKDTACQFSKLVTHYHCTRENCGYKFCG
 RTHMYKHAQHHRVDNLVLDLDFKRFKASLSCHFADCPFSGTSTHFHCLRCFRCTDSTKVTAHRKHGKQ
 DVI SAAGFCQFSSADCAVPDCKYKLCSHFCTYPCRHTVVGMSQMDSHKRKHEKQERGEPPAASPGA
 PVNLDGSLTAAEQGSLFLQTAAGLGLLDGTDGPPVPTASGTRDGPAAPTAAAAATTTTTTATATA
 TAGESSQEDDEEELPEEEAEDDDEDDDEDDDDDDDDDEDLRTDSEESLPEAAGEAGARTPLAAL
 GGPGPAPTAASP

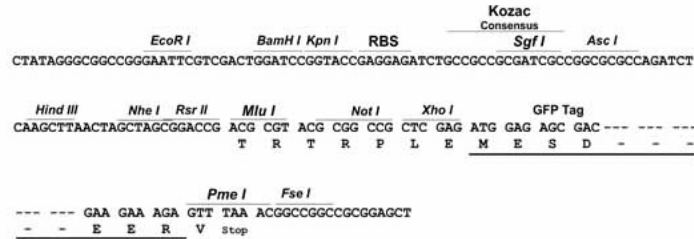
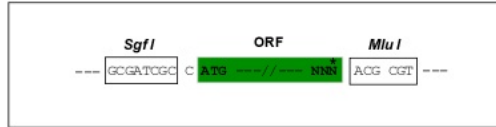
TRTRPLE – GFP Tag – V

Restriction Sites:

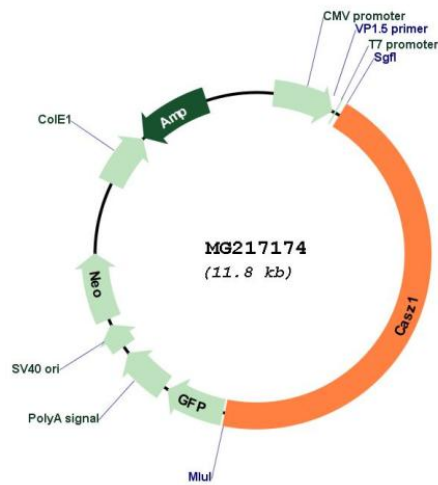
SgfI-MluI

Cloning Scheme:

Cloning sites used for ORF Shutting:



Plasmid Map:



ACCN:	NM_001159344
ORF Size:	5286 bp
OTI Disclaimer:	The molecular sequence of this clone aligns with the gene accession number as a point of reference only. However, individual transcript sequences of the same gene can differ through naturally occurring variations (e.g. polymorphisms), each with its own valid existence. This clone is substantially in agreement with the reference, but a complete review of all prevailing variants is recommended prior to use. More info
OTI Annotation:	This clone was engineered to express the complete ORF with an expression tag. Expression varies depending on the nature of the gene.
Components:	The ORF clone is ion-exchange column purified and shipped in a 2D barcoded Matrix tube containing 10ug of transfection-ready, dried plasmid DNA (reconstitute with 100 ul of water).
Reconstitution Method:	<ol style="list-style-type: none">1. Centrifuge at 5,000xg for 5min.2. Carefully open the tube and add 100ul of sterile water to dissolve the DNA.3. Close the tube and incubate for 10 minutes at room temperature.4. Briefly vortex the tube and then do a quick spin (less than 5000xg) to concentrate the liquid at the bottom.5. Store the suspended plasmid at -20°C. The DNA is stable for at least one year from date of shipping when stored at -20°C.
RefSeq:	NM_001159344.1 , NP_001152816.1
RefSeq Size:	7966 bp
RefSeq ORF:	5289 bp
Locus ID:	69743
Cytogenetics:	4 78.87 cM
Gene Summary:	Transcription factor involved in vascular assembly and morphogenesis through direct transcriptional regulation of EGFL7.[UniProtKB/Swiss-Prot Function]