

## Product datasheet for **MG217162**

### Fmo5 (NM\_001161765) Mouse Tagged ORF Clone

#### Product data:

Product Type:	Expression Plasmids
Product Name:	Fmo5 (NM_001161765) Mouse Tagged ORF Clone
Tag:	TurboGFP
Symbol:	Fmo5
Synonyms:	5033418D19Rik; AI195026
Mammalian Cell Selection:	Neomycin
Vector:	pCMV6-AC-GFP (PS100010)
E. coli Selection:	Ampicillin (100 ug/mL)



[View online »](#)

**ORF Nucleotide Sequence:**

>MG217162 representing NM\_001161765  
 Red=Cloning site Blue=ORF Green=Tags(s)

TTTTGTAATACGACTCACTATAGGGCGGCCGGGAATTCGTCGACTGGATCCGGTACCGAGGAGATCTGCC  
 GCC**CGCATCGCC**

ATGGCCAAAAAAGGATTGCTGTAATTGGAGCAGGAGCTAGCGGGCTCACCTGCATCAAGTCTGCCTGG  
 AAGAGGGCTTGGAACTGTCTGCTTTGAAAGGTCTGGTGACATCGGAGGACTGTGGAGATTCCAGGAAGC  
 CCCTGAGGAAGGCAGGGCCAGTATTTACCAGTCCGTGGTCAACACCTCCAAGGAAATGATGTGTTTC  
 AGTGACTACCCCATCCAGATCATTACCCTAACTACATGCACAACCTCCAGGTCTTAGAGTATTTTCAGGA  
 TGTATGCCAAAGAATTTGACCTTCTCAAAATATATCCAATCAAGACTACAGTGTGCAGCGTGAAGAAGCA  
 GCCTGATTTCTCTACCTCGGGCAATGGCAGGTGGTCACTGAGTGTGAAGGAAACAGCAGGTAGACGTC  
 TTCGATGGAGTCTGGTGTGCACGGGTCAACACGGATGCTCACCTGCCCTGGAAAGCTTTCTGGAA  
 TTGAAAAGTTCAAAGGAAAGTACTTTACAGCCGAGACTATAAGAACCCAGTGAATTCACCGGGAAGAG  
 GGTCAATTGTAATTGGCATTGGGAATTCGAGGGGATCTGGCTGTAGAGATTAGCCACACAGCCAAGCAG  
 GTATTCCTCAGTACCAGGAGAGGAGCTTGATCTTGAACCGTGTAGGCAAGCATGGATATCTATTGACC  
 TGCTACTCTCTTCTCGGATTATGTACTACTTGTACGATCTGTGGTCCATCACTAAAAACAACACTATAT  
 GGAAAAACAGATGAACCAAAGGTTTGATCATGAAATGTTTGGCCTGAAACCTAAACACAGGGCTCTGAGT  
 CAGCATCCAACAGTGAATGATGACCTGCCCAATCGTATCATTGCTGGCTTGGTGAAGGTGAAAGGAAATG  
 TGAAGGAATTCACAGAGACAGCCGCCGATTTGAGGATGGCTCCAGGGAGGATGGCATTGATGTGGTCAT  
 CTTTGGCAGAGCTACAGCTTTGCCCTTCTCTTTCTTGGAGACTCTGTCAAAGTAGTAAAAACAAGGTG  
 TCCTTGTACAAAAAGGTCTTTCCACCTAACCTGGAAAAACCAACTTGAATCATCGGCTTAATTCAGC  
 CCTTGGGAGCCATTATGCCCAATTCAGAGCTCCAAGACGCTGGGCCACTCAAGTGTTCAAAGGGCTAAA  
 GAAATTGCCCTCACAAAGTGAAATGATGGCAGAAATAAATAAGGCTCGAGAGGAAATGGCAAAAAGGTAT  
 GTGGACAGCCAGCGTCATACCATCCAGGGAGACTATATAGACACCATGGAAGAGATTGCAGATTTAGTGG  
 GTGTCAGGCCCAATATCCTGCCTCTGGTCTTCACTGACCCAGGCTGGCATTACGTTACTACTGGGGCC  
 CTGTACTCCAGTCCAGTATCGCCTACAGGGCCCTGGAAAGTGGGCTGGAGCCCGAAAACTATTCTCACC  
 ACGGAAGATCGTGTTCGGAAGCCTCTGATGACAAGAGTGGTGGAAAGAGACAGCTCTGGGGGTCACTGG  
 TGACAGTGCCTCATGCTGGCTGTGCTTTCTTGTGTCATCCTGGCTTATTTT

**ACGCGTACGCGGCCGCTCGAG** – GFP Tag – GTTTAA

**Protein Sequence:**

>MG217162 representing NM\_001161765  
 Red=Cloning site Green=Tags(s)

MAKKRIAVIGAGASGLTCKKCLEEGLEPVCFERSGDIGLWRFQEAPEEGRASIQSVVINTSKEMMCF  
 SDYIPDPHYPNYMHNSQVLEYFRMYAKEFDLLKYIQFKTTVCSVKKQPDFSTSGQWQVVTECEGKQVQDV  
 FDGVLVCTGHHTDAHLPLESFPGIEKFKGYFHSRDYKNPVEFTGKRIVIVIGIGNSGGDLAVEISHTAKQ  
 VFLSTRRGAWILNRVKGHGYPIDLLLSSRIMYYLSRICGPSLKNNYMEKQMNQRFDHEMFGLKPKHRALS  
 QHPTVNDLPLNRIIAGLVKVKGNVKEFTETAAVFEDGSREDGIDVVIFATGYSFAFPFLEDSVKVKNKV  
 SLYKKVFPNLEKPTLAIIGLIQPLGAIMPISLQGRWATQVFKLKLPSQSEMMAEINKAREEMAKRY  
 VDSQRHTIQGDYIDTMEEIADLVGVRPNILPLVFTDPRALRLLLGPCTPVQYRLQGPQKAWAGARKTILT  
 TEDRVKPLMTRVVERDSSGSLVTVRVLMLAVAFFAVILAYF

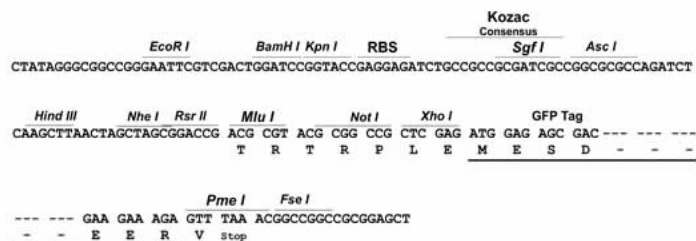
**TRTRPLE** – GFP Tag – V

**Restriction Sites:**

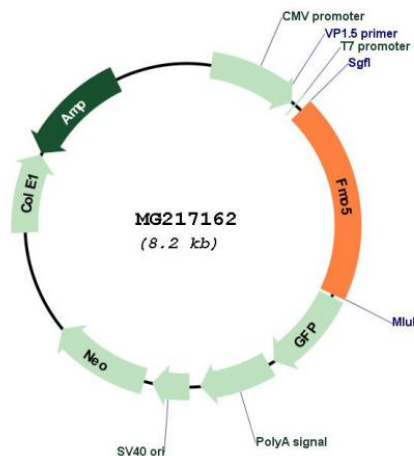
Sgfl-Mlul

Cloning Scheme:

Cloning sites used for ORF Shutting:



Plasmid Map:



<b>ACCN:</b>	NM_001161765
<b>ORF Size:</b>	1599 bp
<b>OTI Disclaimer:</b>	The molecular sequence of this clone aligns with the gene accession number as a point of reference only. However, individual transcript sequences of the same gene can differ through naturally occurring variations (e.g. polymorphisms), each with its own valid existence. This clone is substantially in agreement with the reference, but a complete review of all prevailing variants is recommended prior to use. <a href="#">More info</a>
<b>OTI Annotation:</b>	This clone was engineered to express the complete ORF with an expression tag. Expression varies depending on the nature of the gene.
<b>Components:</b>	The ORF clone is ion-exchange column purified and shipped in a 2D barcoded Matrix tube containing 10ug of transfection-ready, dried plasmid DNA (reconstitute with 100 ul of water).
<b>Reconstitution Method:</b>	<ol style="list-style-type: none"><li>1. Centrifuge at 5,000xg for 5min.</li><li>2. Carefully open the tube and add 100ul of sterile water to dissolve the DNA.</li><li>3. Close the tube and incubate for 10 minutes at room temperature.</li><li>4. Briefly vortex the tube and then do a quick spin (less than 5000xg) to concentrate the liquid at the bottom.</li><li>5. Store the suspended plasmid at -20°C. The DNA is stable for at least one year from date of shipping when stored at -20°C.</li></ol>
<b>RefSeq:</b>	<a href="#">NM_001161765.1</a> , <a href="#">NP_001155237.1</a>
<b>RefSeq Size:</b>	5285 bp
<b>RefSeq ORF:</b>	1602 bp
<b>Locus ID:</b>	14263
<b>UniProt ID:</b>	<a href="#">P97872</a>
<b>Cytogenetics:</b>	3 F2.2
<b>Gene Summary:</b>	In contrast with other forms of FMO it does not seem to be a drug-metabolizing enzyme. [UniProtKB/Swiss-Prot Function]