

## Product datasheet for **MG217155**

### **Irak2 (NM\_001113553) Mouse Tagged ORF Clone**

#### **Product data:**

|                           |   |
|---------------------------|---|
| Product Type:             | Expression Plasmids                         |
| Product Name:             | Irak2 (NM_001113553) Mouse Tagged ORF Clone |
| Tag:                      | TurboGFP                                    |
| Symbol:                   | Irak2                                       |
| Synonyms:                 | 6330415L08Rik; AI649099; IRAK-2             |
| Mammalian Cell Selection: | Neomycin                                    |
| Vector:                   | pCMV6-AC-GFP (PS100010)                     |
| E. coli Selection:        | Ampicillin (100 ug/mL)                      |



[View online »](#)

**ORF Nucleotide Sequence:**

>MG217155 representing NM\_001113553  
 Red=Cloning site Blue=ORF Green=Tags(s)

TTTTGTAATACGACTCACTATAGGGCGGCCGGAATTCGTCGACTGGATCCGGTACCGAGGAGATCTGCC  
 GCC**GCGATCGCC**

ATGGCTTGCTACATCTACCAGCTGCCGTCTGGGTGCTGGACGACCTGTGCCGAATATCGACACGCTCA  
 GTGAGTGGGACTGGATGCAGTTCGTTCCCTACGTGATCACAGACCTGACACAGCTGAGGAAGATCAAGTC  
 CATGGAGAGGGTCCAGGGGTGAGCATCACCCGGGAGCTACTGTGGTGGTGGTCCATGCGCAGGCCACG  
 GTCCAGCAGCTGGTGGACCTCCTGTGTACCTGGAACCTACCGAGCTGCCAGATTGTCTTGAGCTGGC  
 CCATCATGGCTGGGGCCAGCGGACGCTCCGTGCGAGATGGATGCCCTTGTCCCTGAAAAGTATGATGC  
 ACCCGACTCTCCCAGTCTAAGTATTGCAGTACTCCACATCTGCCCCCAAGCAAGAAAGGCTTTTGGGT  
 TTGCCCGAGACAGGCTTTTCTGGAGTGAAGCAGATGTCGTCCAAGCAACTGAGGACTTTGACCAAAGCC  
 ACCGAATCAGCGAGGGCACCTTTGCCGATATCTACCAGGGTCAAAGGAACGGTGTGGCTTCGCCTCAA  
 GAAGCTCAGGGAGGTGGCCGGCTCCAGTCCAGGGTCCATGGACAGATTCTACAGGCAGAGATGCAGCTC  
 TGCTCAGATGCTGCCACGCAACGTCCTACCTCTGCTGGGTTTCTGCACTGGAAGACAGTTCCACAGCC  
 TCATCTACCCCTACATGGCAAATGGCTCTCTGCACGACAGACTCTGGGCTCAGGGCAACTCAGACATGCT  
 GCCCTGGCCACAGCGGGCCAGCATCTGCTCAGGGCTGCTTCTAGCCGTGGAGCACCTGCATAGCCTGGAC  
 ATCATCCACAGCAATGTTAAGAGTGCCAACGCTTGTCTGGACCAGCATCTTAACCCCAAGCTGGCTCATC  
 CTGTGGCTCACCTCATCCCACAATAAAAAGACCAATAATACCGTCATGAGGACTCACCTGTTCCAGGC  
 CTCAGCTGCATATCTGCCGAACACTTCATCAGAGTGGGCGAGCTGACCAAGCAGGTGGACATCTCAGC  
 TGTGGAATTGTATTGGCCGAGGTCCTTACCGGCATCCCTGCGATGGACAAGGACCGCAGTCCAGTTTACC  
 TGAAGGATTTGCTTCTCAGTGAGATTCCAACAGTACTTCTTCAGTCTGCTCCAGGAAGACCAGCATGGG  
 GAAGGCAGTGGTGAAGAGATCTGCCAGAGACATGTGGAGAAGAGGGCAGGGCTGCTGCCTGAGGCCTGT  
 GAGGAAGCCTGGGCCACCGCTGTGAGTGTCTGCCTGCGGAGGCGCAATGCCAGCGTGGAGGAGGCACGAG  
 TCTCCCTGGCCGGGTGGAGGAGCAACTCCGAGGGCAGCTGTCCCTTCCCTGGAGCAGGGTTTCTGAGGC  
 CACAGGCTCATCTCCAATACCCCGAGGAAACAGATGACGTTGACAATCCAGCCTCAGCGTCCCTTCT  
 TTGTTATGATGGCATCGTCCCGAGGGCTGCCTCCTCTCCACTTTCACGGGACATGGAGCAGCACAGC  
 CATCCACCAGTGGGAGACAGGAGGCTGACTCCTCGTCAGAGGCTTGCACAGGCCACAGACACCCAGAA  
 CGCTACAGAGACTTCATGAAAAATTGAGATCAATGAAGCCAAAAGGAGACTGATGGAGAACATCGTACTC  
 TACAAAGAAGAGAGACTGGACAGCAGCGAGCTCTTTGGACCC

**ACGCGTACGCGGCCGCTCGAG - GFP Tag - GTTTAA**

**Protein Sequence:**

>MG217155 representing NM\_001113553  
 Red=Cloning site Green=Tags(s)

MACYIYQLPSWVLDLRCRNIIDLSEWDMQFASYVITDLTQLRKIKSMERVQGVISITRELLWWWSMRQAT  
 VQQLVDLLCHLELYRAAQIVLSWPIMAGAQRQRPCEMDAPCSLKTADPSPQSKYCSTSTSPAPKQERLLG  
 LPGDRLFWSEADVQATEDFDQSHRISEGTAFADIYQQRNGVAFKFKLREVAGSSPGSMDFLQAEMQL  
 CLRCCHANVLP LLGFCTGRQFHSLIYPYMANGSLHDRLWAQGNSDMLPWPQRASICSGLLLAVEHLHSLD  
 I IHSNVKSANVLLDQHLNPKLAHPVAHPHPDNKTKYTVMRTHLFQASAAYLPEHFIRVGQLTKQVDIFS  
 CGIVLAEVLTGIPAMDKDRSPVYLKDLLLSEIPNSTSSVCSRKTSMGKAVVKEICQRHVEKRAGLLPEAC  
 EEAWATAVSVCLRRRNASVEEARVSLAGVEEQLRGQLSLPWSRVSEATGSSSNTPEETDDVDNSSLVPS  
 LVMMASCPGAASSPLFTGHGAAQPSTSGRQEADSSSEACTGPQTPQATETSWKIEINEAKRRLMENIVL  
 YKEERLDSSELFGP

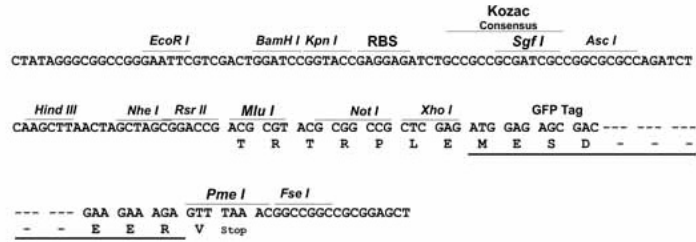
**TRTRPLE - GFP Tag - V**

**Restriction Sites:**

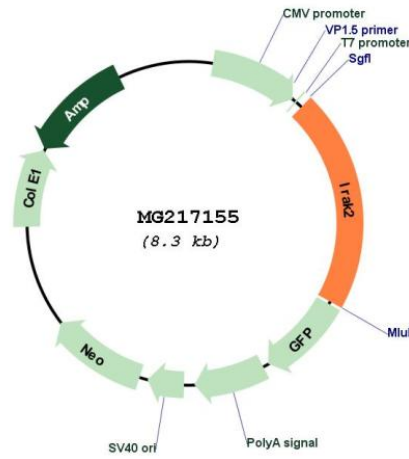
Sgfl-MluI

Cloning Scheme:

Cloning sites used for ORF Shutting:



Plasmid Map:



ACCN: NM\_001113553  
 ORF Size: 1722 bp

|                               |   |
|-------------------------------|---|
| <b>OTI Disclaimer:</b>        | The molecular sequence of this clone aligns with the gene accession number as a point of reference only. However, individual transcript sequences of the same gene can differ through naturally occurring variations (e.g. polymorphisms), each with its own valid existence. This clone is substantially in agreement with the reference, but a complete review of all prevailing variants is recommended prior to use. <a href="#">More info</a>  |
| <b>OTI Annotation:</b>        | This clone was engineered to express the complete ORF with an expression tag. Expression varies depending on the nature of the gene.  |
| <b>Components:</b>            | The ORF clone is ion-exchange column purified and shipped in a 2D barcoded Matrix tube containing 10ug of transfection-ready, dried plasmid DNA (reconstitute with 100 ul of water).  |
| <b>Reconstitution Method:</b> | <ol style="list-style-type: none"><li>1. Centrifuge at 5,000xg for 5min.</li><li>2. Carefully open the tube and add 100ul of sterile water to dissolve the DNA.</li><li>3. Close the tube and incubate for 10 minutes at room temperature.</li><li>4. Briefly vortex the tube and then do a quick spin (less than 5000xg) to concentrate the liquid at the bottom.</li><li>5. Store the suspended plasmid at -20°C. The DNA is stable for at least one year from date of shipping when stored at -20°C.</li></ol> |
| <b>RefSeq:</b>                | <a href="#">NM_001113553.1</a> , <a href="#">NP_001107025.1</a>   |
| <b>RefSeq Size:</b>           | 3065 bp   |
| <b>RefSeq ORF:</b>            | 1725 bp   |
| <b>Locus ID:</b>              | 108960  |
| <b>UniProt ID:</b>            | <a href="#">Q8CFA1</a>  |
| <b>Cytogenetics:</b>          | 6 52.82 cM  |
| <b>Gene Summary:</b>          | Binds to the IL-1 type I receptor following IL-1 engagement, triggering intracellular signaling cascades leading to transcriptional up-regulation and mRNA stabilization.[UniProtKB/Swiss-Prot Function]  |